

56151

HYUNDAI VERACRUZ

KIA SORENTO

WIRING LOCATION GUIDE GUÍA DE UBICACIÓN DEL CABLEADO IDE D'EMPLACEMENT DES FILS



MUST READ FIRST!

All steps must be followed to ensure correct function of the T-Connector. To verify proper installation once installed, test by connecting a test light or properly wired trailer.

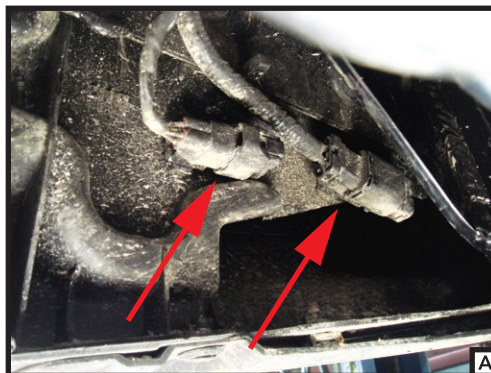
¡DEBE LEERSE PRIMERO!

Debe seguirse todos los pasos para asegurar el correcto funcionamiento del Conector-T. Para verificar la correcta instalación, pruebe conectando una luz de prueba o un remolque debidamente cableado.

À LIRE D'ABORD!

Pour assurer le bon fonctionnement du T-Connector, il faut suivre toutes les étapes. Pour vérifier que l'installation a été bien effectuée, branchez un feu de test ou une remorque correctement filée.

9/9/2011



INSTALLATION QUESTIONS? CALL TECHNICAL SUPPORT AT 1-800-798-0813

English

1A. Hyundai Veracruz:

The factory tow harness connector is located under the passenger's side of the vehicle, near the rear tire along the frame. Remove the protective caps and insert the harness connectors (A,B). Make sure the connectors are fully inserted with locking tabs in place (C).

1B. Kia Sorento:

The factory tow harness connector is located under the the driver's side of the vehicle, on the outside frame rail behind the rear tire. Remove the protective caps and insert the harness connectors. Make sure the connectors are fully inserted with locking tabs in place (D).

2. Route the 4-flat to the center of the vehicle by going over the exhaust along the bumper avoiding any areas that may cut, pinch or melt the wire and secure using cable ties provided.

3. Adhere the black converter box to the underside of the vehicle in a secure out of the way location using the double sided tape provided. Find a flat, clean surface that is out of the path of road spray from the tires.

4. Secure any loose parts of the T-Connector with the cable ties provided (E).

5. Insert the 10 AMP fuse provided into the inline fuse holder to complete the install.

WARNING:

Mount converter module inside the tow vehicle or in a protected area similar to a vehicle interior. Failure to mount the module in a protected area can cause loss of warranty, product failure including lamp malfunction, overheating and potential fire.

IMPORTANT: Battery connection must be fuse protected, 10 amp max. Exceeding the product rating can cause loss of warranty, overheating and potential fire. Do not exceed lower of tow vehicle lamp load rating or:

Signal circuits – 3.0 amps per side
Tail / Running Lights – 6.0 amps total

Check vehicle owner's manual or contact vehicle manufacturer for more information.

