

# 55334

CHRYSLER TOWN & COUNTRY  
DODGE CARAVAN  
DODGE DURANGO  
DODGE GRAND CARAVAN  
PLYMOUTH GRAND VOYAGER  
PLYMOUTH VOYAGER

## WIRING LOCATION GUIDE GUÍA DE UBICACIÓN DEL CABLEADO IDE D'EMPLACEMENT DES FILS



### MUST READ FIRST!

All steps must be followed to ensure correct function of the T-Connector. To verify proper installation once installed, test by connecting a test light or properly wired trailer.

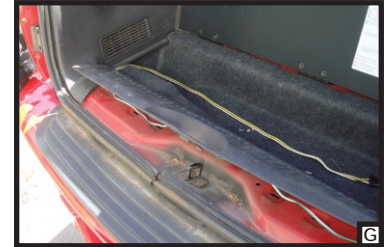
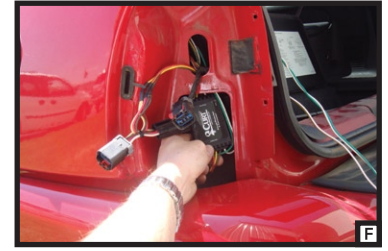
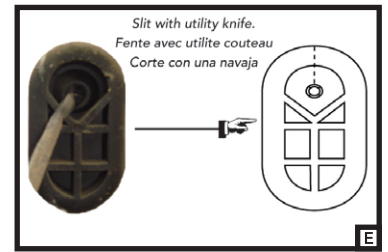
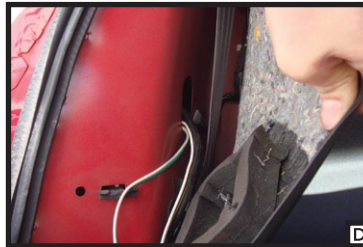
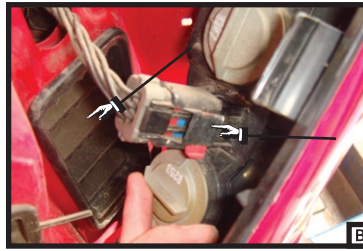
### ¡DEBE LEERSE PRIMERO!

Debe seguirse todos los pasos para asegurar el correcto funcionamiento del Conector-T. Para verificar la correcta instalación, pruebe conectando una luz de prueba o un remolque debidamente cableado.

### À LIRE D'ABORD!

Pour assurer le bon fonctionnement du T-Connector, il faut suivre toutes les étapes. Pour vérifier que l'installation a été bien effectuée, branchez un feu de test ou une remorque correctement filéée.

5/30/08



## DURANGO *English*

1. Remove the vehicles rear taillights by removing the two screws from each housing. [A] Slide the red locking tab on the harness connector to the unlocked position and disconnect the wire harness from both taillights. [B]
2. Remove the black air baffle [B] and pullout the rubber grommet [E] behind the taillight. Remove the hatch threshold [C] and pull back the interior panels on each side of the vehicle and remove the rubber grommet [E] behind the panels. [D]
3. Insert T-connector into space behind the air baffle, route the housings with yellow wire attached up through the grommet mounting location and mate them to the vehicle housings. [F]
4. Slit the grommet as shown in [E]. Place the T-connector wires into the slit and reseal into mounting location.
5. Secure black box in harness to metal behind rubber grommet using the double-sided tape provided and/or cable ties. Route 4-flat and housings with green wire attached up though inside rubber grommet mounting location. Slit rubber grommet as before and reseal into mounting location. [D]
6. Route the housings with green wire to passenger side under threshold or in jack compartment and repeat driver side steps working from inside of the vehicle out to the taillight. [G]
7. Route the 4-flat into the jack compartment for storage. [G]

### WARNING!

Verify miscellaneous items that may be hidden behind or under any surface before drilling to avoid damage to vehicle and/or personal injury.

## *Español*

## *Français*

