

13151 / 75041

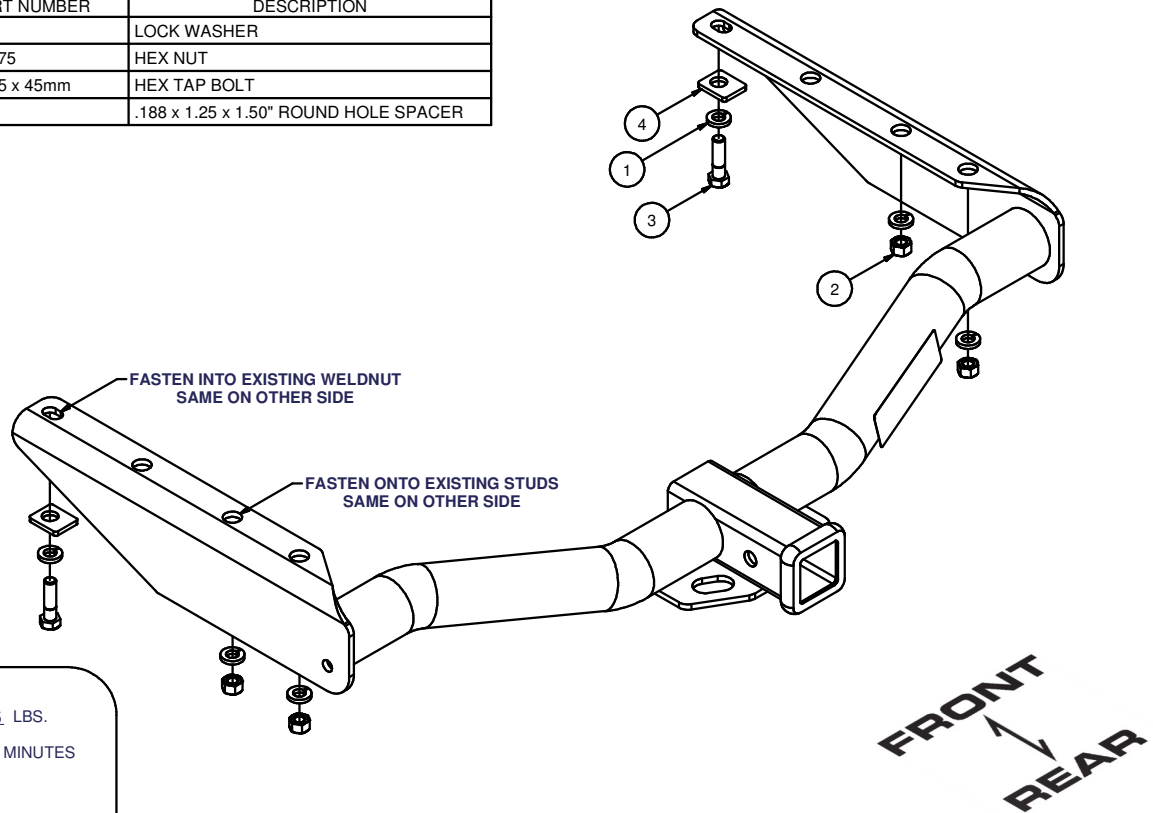
93-98 JEEP GRAND CHEROKEE

10/15/2012

GROSS LOAD CAPACITY WHEN USED AS A WEIGHT CARRYING HITCH: 5,000 LBS. TRAILER WEIGHT & 500 LBS. TONGUE WEIGHT.  
 GROSS LOAD CAPACITY WHEN USED AS A WEIGHT DISTRIBUTION HITCH: 6,000 LBS. TRAILER WEIGHT & 600 LBS. TONGUE WEIGHT

\*\*\*DO NOT EXCEED VEHICLE MANUFACTURER'S RECOMMENDED TOWING CAPACITY.\*\*\*

| Parts List |     |                 |                                       |
|------------|-----|-----------------|---------------------------------------|
| ITEM       | QTY | PART NUMBER     | DESCRIPTION                           |
| 1          | 6   | 1/2"            | LOCK WASHER                           |
| 2          | 4   | M12 - 1.75      | HEX NUT                               |
| 3          | 2   | M12-1.75 x 45mm | HEX TAP BOLT                          |
| 4          | 2   | CM-SP8          | .188 x 1.25 x 1.50" ROUND HOLE SPACER |



HITCH WEIGHT: 45 LBS.

INSTALL TIME: 30 MINUTES

INSTALL NOTES:

NO DRILLING REQUIRED

## INSTALLATION STEPS

### VEHICLES WITHOUT FUEL TANK SHIELD.

- (1) RAISE HITCH INTO POSITION OVER THE TWO EXISTING STUDS AT THE END OF THE FRAME. START LOCKWASHERS AND NUTS HAND TIGHTEN ONLY.
- (2) INSTALL HEX HEAD BOLTS, WASHERS, AND SPACERS INTO EXISTING WELD NUTS AT THE FORWARD MOST HOLE.

### VEHICLES WITH CLOSED SIDED FUEL TANK SHIELD.

- (1) REMOVE NUTS AND FLATWASHERS FROM THE TWO STUDS AT THE END OF THE FRAME.
- (2) REMOVE THE BOLTS AND WASHER ASSEMBLIES FROM THE FORWARD ATTACHMENTS AND DISCARD.
- (3) RAISE THE HITCH INTO POSITION OVER THE TWO EXISTING STUDS AT THE END OF THE FRAME. START LOCKWASHERS AND NUTS, HAND TIGHTEN ONLY.

**NOTE: FUEL TANK SHIELD SHOULD BE SANDWICHED BETWEEN THE FRAME AND SIDE BRACKET.**

- (4) INSTALL HEX HEAD BOLTS, LOCKWASHERS AND SPACERS INTO THE EXISTING WELD NUT AT THE FORWARD HOLE.

### TIGHTEN ALL HARDWARE TO 79-FTLBS

**PERIODICALLY CHECK THIS RECEIVER HITCH TO ENSURE THAT ALL FASTENERS ARE TIGHT AND THAT ALL STRUCTURAL COMPONENTS ARE SOUND.**

Curt Manufacturing Inc., warrants this product to be free of defects in material and/or workmanship at the time of retail purchase by the original purchaser. If the product is found to be defective, Curt Manufacturing Inc., may repair or replace the product, at their option, when the product is returned, prepaid, with proof of purchase. Alteration to, misuse of, or improper installation of this product voids the warranty. Curt Manufacturing Inc.'s liability is limited to repair or replacement of products found to be defective, and specifically excludes liability for incidental or consequential loss or damage.

10/15/2012