



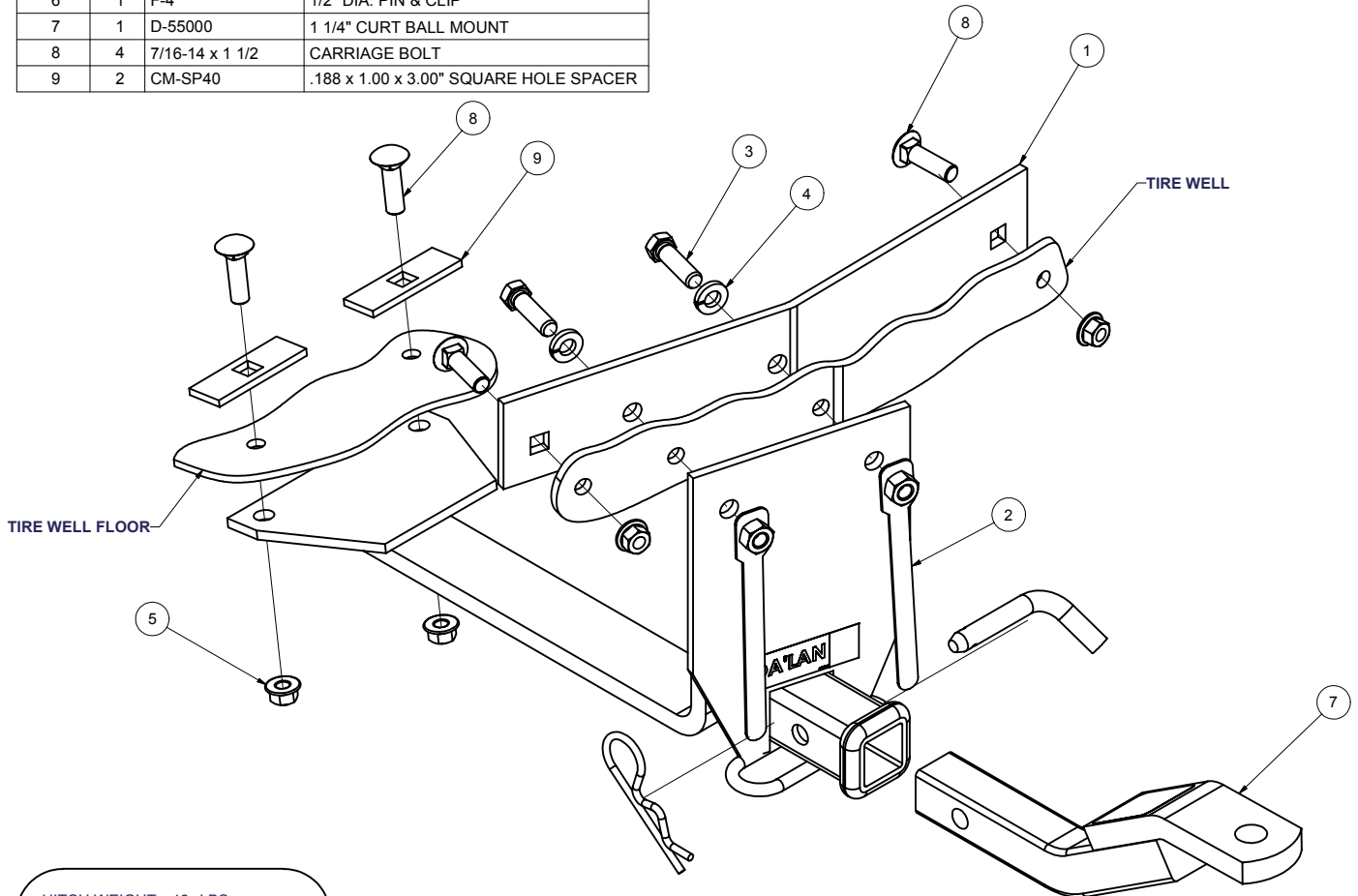
11751

MERCEDES SLK CONVERTIBLE

11/2/2006

GROSS LOAD CAPACITY WHEN USED AS A WEIGHT CARRYING HITCH: 2,000 LBS. TRAILER WEIGHT & 200 LBS. TONGUE WEIGHT. *DO NOT EXCEED VEHICLE MANUFACTURER'S RECOMMENDED TOWING CAPACITY.*****

Parts List			
ITEM	QTY	PART NUMBER	DESCRIPTION
1	1	CM-11751-BP	.250 BACKING PLATE
2	2	7_16-14 TAB NUT	HANDLE NUT
3	2	7/16-14 x 1 1/2	HEX BOLT
4	2	7/16	HELICAL LOCK WASHER
5	4	7/16-14	HEX FLANGE NUT
6	1	F-4	1/2" DIA. PIN & CLIP
7	1	D-55000	1 1/4" CURT BALL MOUNT
8	4	7/16-14 x 1 1/2	CARRIAGE BOLT
9	2	CM-SP40	.188 x 1.00 x 3.00" SQUARE HOLE SPACER



HITCH WEIGHT: 18 LBS.
 INSTALL TIME: 30 MINUTES
 INSTALL NOTES:
DRILLING REQUIRED

INSTALLATION STEPS

- 1) Temporarily remove spare tire and other items from tire well. Place backing plate inside trunk against rear of tire well with punched holes closer to bottom. Make sure that center point between the two round holes are on center line of car and position the top of the plate against lip just below top of tire well.
- 2) Mark and center punch the centers of the backing plate holes on tire well. Drill holes and install hitch as shown.
- 3) Using the hitch as a template, drill remaining mounting holes and install fasteners as shown.
- 4) Torque all hardware to 50 lb.-ft.

PERIODICALLY CHECK THIS RECEIVER HITCH TO ENSURE THAT ALL FASTENERS ARE TIGHT AND THAT ALL STRUCTURAL COMPONENTS ARE SOUND.

Curt Manufacturing Inc., warrants this product to be free of defects in material and/or workmanship at the time of retail purchase by the original purchaser. If the product is found to be defective, Curt Manufacturing Inc., may repair or replace the product, at their option, when the product is returned, prepaid, with proof of purchase. Alteration to, misuse of, or improper installation of this product voids the warranty. Curt Manufacturing Inc.'s liability is limited to repair or replacement of products found to be defective, and specifically excludes liability for incidental or consequential loss or damage.