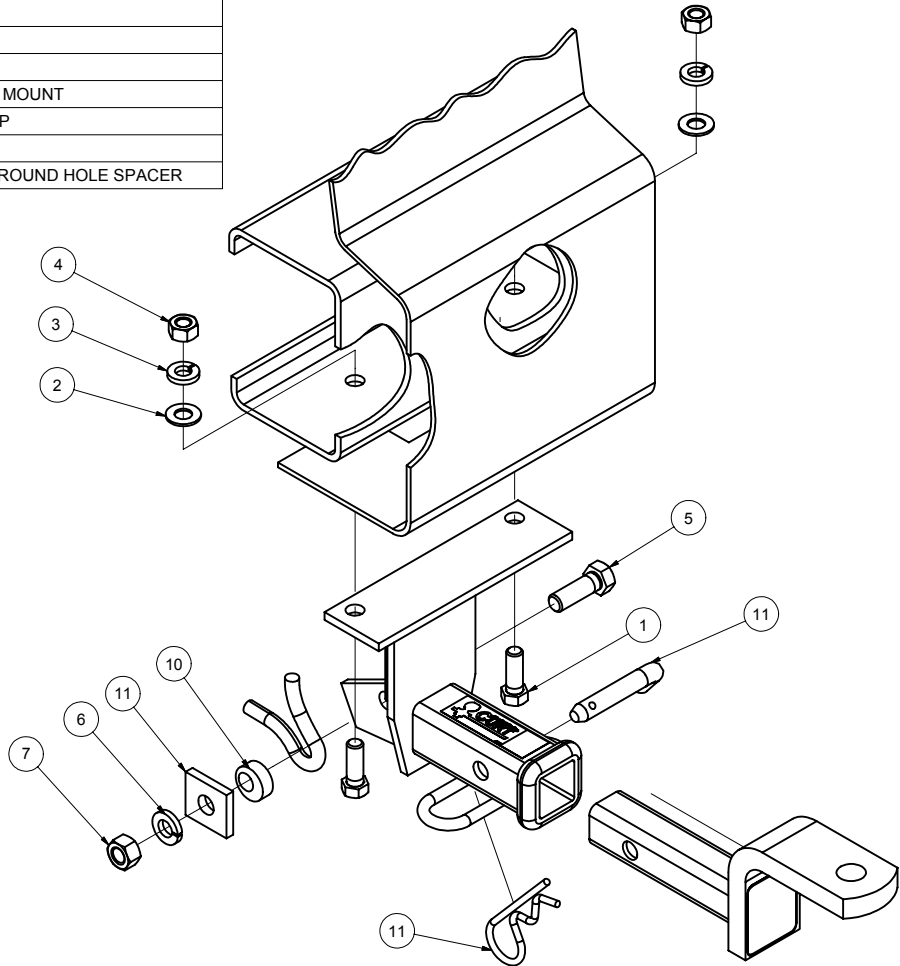


**GROSS LOAD CAPACITY WHEN USED AS A WEIGHT CARRYING HITCH: 1,500 LBS. TRAILER WEIGHT & 150 LBS. TONGUE WEIGHT.
 DO NOT EXCEED VEHICLE MANUFACTURER'S RECOMMENDED TOWING CAPACITY.**

Parts List			
ITEM	QTY	PART NUMBER	DESCRIPTION
1	2	7/16-14 x 1 1/4	HEX BOLT
2	2	7/16	WASHER
3	2	7/16	HELICAL LOCK WASHER
4	2	7/16-14	HEX NUT
5	1	1/2 - 13 x 1 1/2	HEX BOLT
6	1	1/2"	LOCK WASHER
7	1	1/2-13	HEX NUT
8	1	D-55001	1 1/4" CURT BALL MOUNT
9	1	F-4	1/2" DIA. PIN & CLIP
10	1	CM-SP110	.375" SPACER
11	1	CM-SP25	.250 x 1.38 x 1.50" ROUND HOLE SPACER



HITCH WEIGHT: 8 LBS.
 INSTALL TIME: 45 MINUTES
 INSTALL NOTES:
DRILLING REQUIRED

- INSTALLATION STEPS**
- 1) This hitch will bolt to the bottom of the steel reinforcement beam inside the car's rear bumper, and to the car's tow loop.
 - 2) Before the hitch can be fitted, temporarily remove two bolts fastening the bottom of the bumper fascia to the body. Remove a 2 1/2 x 3 1/2 section of bumper fascia for hitch clearance as shown.
 - 3) Hold the hitch in position on the car at the tow loop and bottom of the bumper beam. Mount the hitch at the tow loop using fasteners as shown. Using the hitch as a template, drill the bumper for 7/16" diameter fasteners.
 - 4) Fasten the hitch at the bumper beam using fasteners as shown.
 - 5) Torque all 1/2" fasteners to 75 lb-ft, and all 7/16" fasteners to 50 lb-ft.
- PERIODICALLY CHECK THIS RECEIVER HITCH TO INSURE THAT ALL FASTENERS ARE TIGHT AND THAT ALL STRUCTURAL COMPONENTS ARE SOUND.**

Curt Manufacturing Inc., warrants this product to be free of defects in material and/or workmanship at the time of retail purchase by the original purchaser. If the product is found to be defective, Curt Manufacturing Inc., may repair or replace the product, at their option, when the product is returned, prepaid, with proof of purchase. Alteration to, misuse of, or improper installation of this product voids the warranty. Curt Manufacturing Inc.'s liability is limited to repair or replacement of products found to be defective, and specifically excludes liability for incidental or consequential loss or damage.