

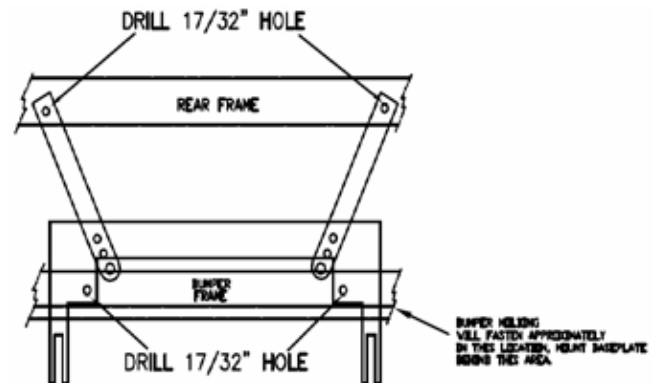


## BX1503 Installation Instructions 1997-03 Buick Century

**Utilization of Blue Ox baseplates with any tow bar not approved by Automatic Equipment Mfg. Co. invalidates the limited warranty.**

Installation of this baseplate requires removing the bumper molding and drilling holes in the vehicle's frame. Both the bumper molding and the bottom air dam will need to be trimmed.

1. Read the General Instruction Sheet included with this baseplate.
2. The bumper molding will need to be removed to attach the baseplate. Remove the plastic rivets and bolts on the top and bottom of the bumper. There are two bolts that hold the molding to the side quarter panels. To get to these bolts remove the Phillips screws which are in front of the tires on each side of the car. Before pulling out the bumper there are four clips that hold the top of the bumper. These clips are connected to the grill part of the bumper and can be spread apart and pushed back. Now pull the bumper off the car.
3. Hold the baseplate weldment (Item 1) up to the frame so that it is centered on the bumper (as shown in drawing). Clamp the baseplate to the frame so that the bumper molding can be put back on. Use the baseplate as a template to drill the 17/32" holes. Insert the nut plates (Item 5) in the bumper and bolt the baseplate to the frame. Use Loctite Blue with the bolts to ensure the bolts do not loosen.
4. The bent braces (Item 2) will bolt to the two brackets that extend down from the baseplate. Use the 1/2" bolts and lock washers (Items 6 and 7) for this procedure. Hand tighten only.
5. The braces will extend to a cross frame, use the brace as a guide to drill the 17/32" holes. Use the bolts, washers and wire nuts (Items 4, 6 and 7) to bolt the braces to the frame.
6. Tighten each bolt, be sure to use Loctite Blue to ensure the bolts do not loosen. Replace the bumper molding, you will need to trim some of the molding so it will fit around the baseplate. The bottom air dam will need to be trimmed also.
7. The dimensional variations between otherwise identical cars can be considerable. While the location and size of the holes in the baseplate were designed to allow for easy installation, it may be necessary to file a hole slightly to allow a bolt to clear.
8. Do not substitute other devices if the tow bar pin and clip are lost.
9. **DEALER OR INSTALLER: BE SURE THE USER RECEIVES THE INSTRUCTION SHEET.**

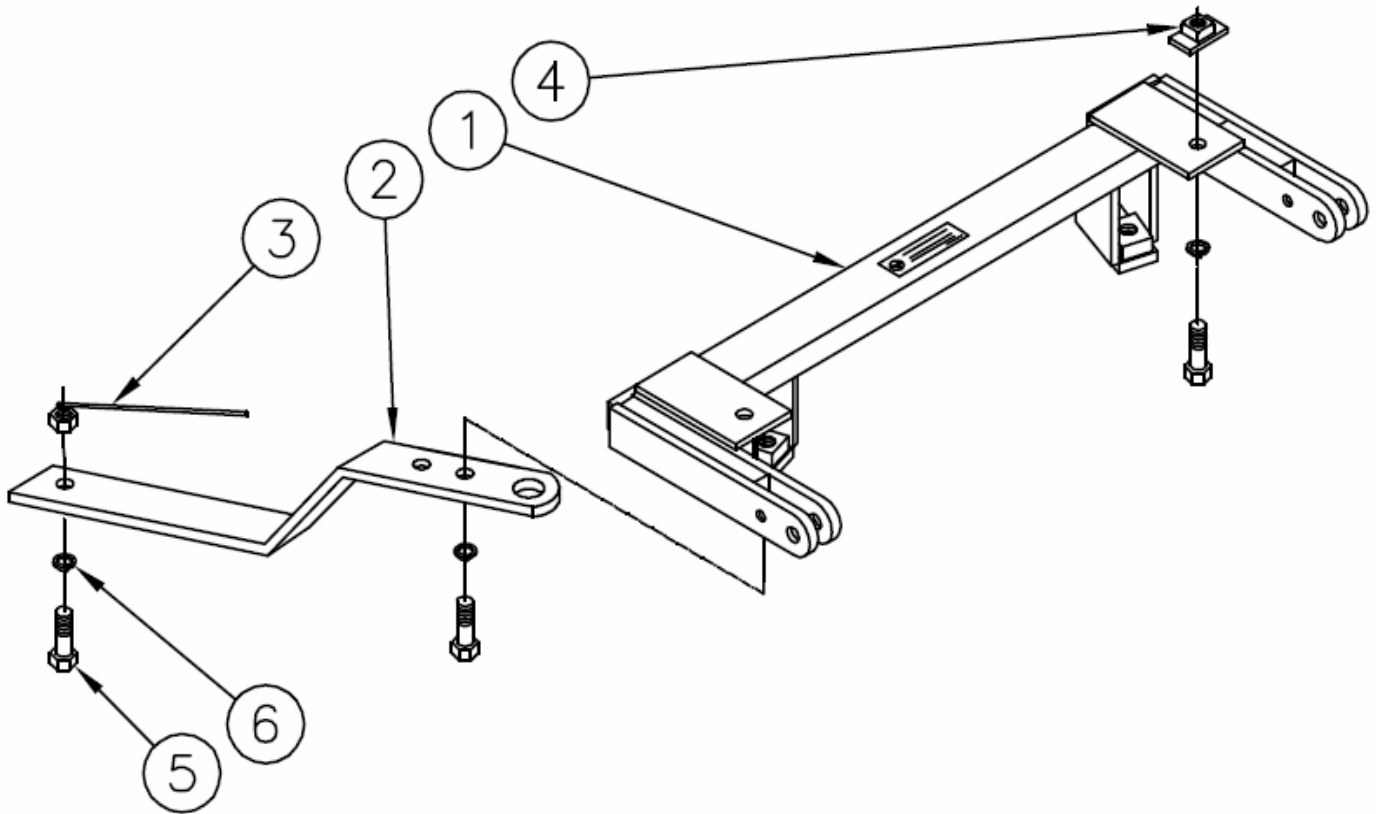


# Automatic

### Tools Required

3/4" Wrench  
 7mm Wrench  
 C - Clamp (2)

Phillips Screwdriver      Loctite Blue  
 17/32" Drill Bit          Drill



### Parts List

Ref. No.	Qty.	Part No.	Description
1	1	61-5122	Weldment Baseplate, BX1503
2	2	102-5349	Brace
3	2	61-4029	1/2" Wire Nut
4	2	61-4931	1/2" Nut Plate
5	8	201-0068	1/2-13 x 1 3/4, Hex Bolt
6	8	203-0012	1/2" Lock Washer

# General Information

1. Ensure that your product(s) are registered online at [www.blueox.com](http://www.blueox.com). It is crucial to register your product(s) so that you may be alerted of product offerings, updates, upgrades, maintenance and safety bulletins, and/or recalls.
2. **It is the owner's responsibility to inspect all towing equipment for cracked welds, missing or worn parts and loose bolts before each towing trip.** Be sure to use Loctite® Red on all bolts and tighten to the recommended specifications.
3. **It is the owner's responsibility to hook up all towing equipment per manufacturer's instructions/recommendations.**
4. Remove the attachment tabs when not in use (if applicable).

## Notice To Baseplate Installer

### 1. It is YOUR responsibility to watch for:

- Oil cooler and air conditioner lines
- Electrical wires and hoses
- Missing parts or attaching points on the frame

\*\* If the baseplate is improperly installed and is against a wire or hose, it could cause fluid leaks or electrical shorts some time after the actual baseplate installation.

## Permanent Baseplate Safety Cable Installation

Permanent baseplate safety cables are strongly recommended when towing a vehicle with a tow bar. The principle function of the permanent baseplate safety cables is to prevent the towed vehicle from breaking loose in the event the connection between the frame of the towed vehicle and the baseplate fails or becomes disconnected. The cables must be connected from the baseplate to the frame rail or cross member of the vehicle's frame. The illustrations below show the possible arrangements recommended by Blue Ox®. Each permanent baseplate safety cable must have an adequate weight rating for the towing system. The weight rating of the two (2) cables together will not qualify.

***Do not mount the permanent baseplate safety cables against wires, hoses or brake lines.***

These permanent baseplate safety cables should remain installed as long as the baseplate is installed on the vehicle. Permanent baseplate safety cables are to be used in conjunction with, and NOT a replacement for legally required safety cables attaching the towed vehicle to the towing vehicle.

### OPTION #1

Permanent Baseplate Safety Cables to Cross Member or Frame of Towed Vehicle.



### OPTION #2

Permanent Baseplate Safety Cables to Cross Member or Frame of Towed Vehicle.

