



# **TRUE FRAME MOUNTED CAMPER TIE DOWNS**

**IMPORTANT OWNER-OPERATOR INSTALLATION INSTRUCTIONS**

## **R3503/FMTSHRO**

**REAR TIEDOWNS**

**APPLICATION FITS:**

**All 3-piece SuperHitches  
(except C1206)**

**PLEASE GIVE THIS BOOKLET TO YOUR CUSTOMER  
AS IT CONTAINS CRITICAL OPERATOR INFORMATION**

**REV MBJ 7/10/07  
TECH SUPPORT (800) 246-8132**



## R3503 PARTS INVENTORY

2	TIE DOWN RECEIVERS	2	1/4" X 24" CHAIN
2	STRAIGHT INSERTS	2	1/4" SNAPPER PINS
2	5/16" QUICK LINKS		

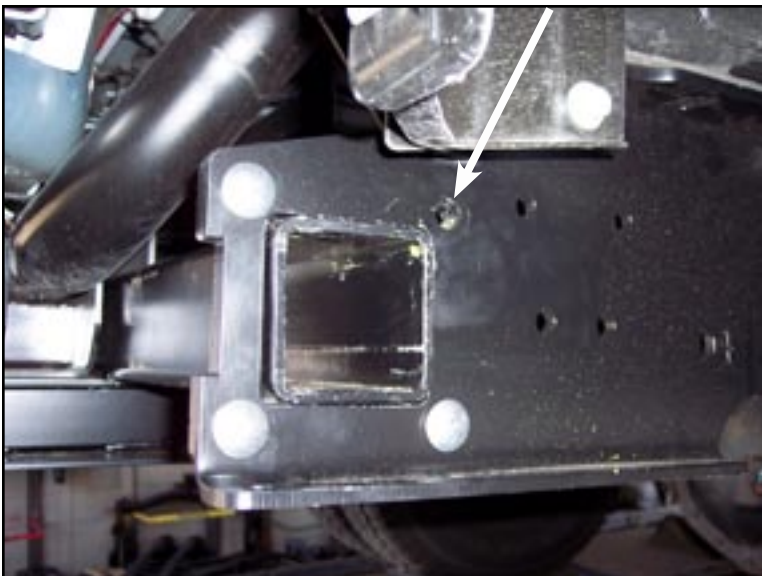
### **INSTALLATION INSTRUCTIONS:**

- 1.** Remove the upper SuperHitch sideplate to crosstube ribneck stud bolt (**see Photo A**).
- 2.** Slide the tiedown receiver into the SuperHitch crosstube opening and reinstall the ribneck stud bolt (**see Photo B**). Tighten to 75 ft. lbs.

**\*NOTE:** The included tie down inserts come with 2 predrilled pin hole locations. When hooking up your camper, either hole may be used providing there is a **MINIMUM** of 2" clearance between the chain/turnbuckle attaching assembly and the truck bed wall. **THERE ARE ALSO 2 PRE-PUNCHED HOLES LOCATED ON THE TRIANGULAR BULLET PLATE ON THE END OF EACH TIE DOWN INSERT, EITHER OF THE TWO HOLES CAN BE USED, BUT THE HOLE THAT PROVIDES THE GREATEST ANGLE IS PREFERRED.**

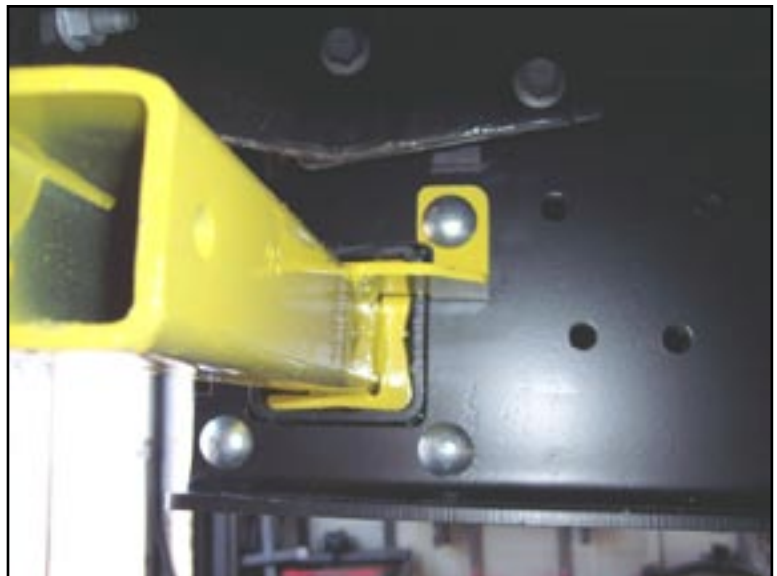
Photo A

Remove this ribneck bolt



Passenger side, front of truck →

Photo B



**DO NOT INSTALL YOUR TRUCK CAMPER IN YOUR TRUCK ON TOP OF A DROP IN PLASTIC BEDLINER, AS YOUR CAMPER CAN SLIDE RESULTING IN SEVERE BED DAMAGE! USING A RUBBER BED MAT WILL MINIMIZE MOVEMENT AND ENSURE THE WARRANTY ON YOUR TIE-DOWN SYSTEM.**

## ***TIEDOWN INSERT INSTALLATION INSTRUCTIONS***

*On one end of each of your tiedown inserts is a triangular plate referred to by Torklift as a bullet plate. Your tiedown inserts should be installed with the shorter side of the bullet plate facing away from each other, i.e.. The shorter side of the front insert should point to the front of the truck and the shorter side of the rear insert should point towards the rear of the truck.*

*Once installed, attach the torklift directional stickers to the face of the bullet plate on the insert as a reminder.*

***DRIVERS SIDE REAR***



***SHORTER SIDE***



***DRIVERS SIDE***

# **TURNBUCKLE SPRINGLOAD OPTIONS**

## **CONTACT YOUR LOCAL DEALER FOR MORE DETAILS**

Torklift requires all 4 tiedown points to be spring loaded in order to qualify for our manufacturer's

**Industry Exclusive Camper Anchor and Truck Frame Warranty**

### **BASIC SPRINGLOAD KIT - \$9000**

**Includes 2 External Springload Units  
& 2 Heavy Duty Forged Turnbuckles.  
Lifetime Guarantee**



### **FASTGUNS LEVER ACTION TURNBUCKLES**

**S9520-GREY SS / S9521-WHITE SS / S9527-POLISHED SS**  
FOR BED MOUNTED TIEDOWNS  
**S9522-GREY SS/ S9523-WHITE SS/ S9526-POLISHED**  
FRAME OR BUMPER MOUNTED TIEDOWNS

**Includes 2 Stainless Steel Turnbuckles with an Internal  
"Set" Spring. Available in 2 Lengths and 3 Finishes  
(Grey, White or Polished Stainless Steel)  
Lifetime Guarantee**

### **FASTGUN DERRINGERS**

**Zinc S9524**

**Stainless Powdercoat S9525**

**Polished Stainless S9528**

**Transforms Your Pre-Existing Conventional  
Turnbuckles into a Lever Action  
FastGun Style Turnbuckle.  
Kit includes 4 lever action Derringers**



### **SPRINGLOAD XL KIT - S9050**

**This set includes 2 Long Chrome Barreled  
Turnbuckles with an Internal "Set" Spring.  
The Springload XL Kit comes with a Pol-  
ished Chrome Finish and is compatible  
with the FastGun Derringers.  
2 year warranty**

# **RECOMMENDED TRUCK CAMPER INSTALLATION INSTRUCTIONS**

**When securing any heavy load (especially a camper) in your truck bed, your front tiedown points should pull the load forward as much as possible. Some camper anchor points may differ with different manufacturers, as well as the camper jack mounting locations. Your TorkLift tiedown inserts have offset triangular brackets to increase the angle of pull. These are designed to be used in the front facing forward, and the rear facing rearward but can be used in either front or rear. These recommendations are to be considered and followed as a basic rule of thumb. Obviously there will be some applications where this may not be possible. At a minimum, if opposite pull of both front and rear tiedowns cannot be achieved for whatever reason, you should have at least a forward pull at the front or rear location.**

**If your camper does not come with Rubber Bumpers on the front lower portion of the camper, installing Rubber Bumpers (Torklift has Rubber Bumpers available Part A7001) or using a block of wood such as a 2 x 4 in the bed, will prevent the camper from damaging the front bulk head of the truck bed.**

**It is normal to have some shifting or movement of the camper-especially during off road use. Remember- do not install your camper on top of a plastic bedliner, this could allow the camper to shift during transit. As always, use a rubber bed mat to minimize any movement.**

# **TORKLIFT LIMITED WARRANTY**

322 N RAILROAD AVE, KENT, WA 98032 (800) 246-8132

## LIMITED WARRANTY

TorkLift warrants its hitches, custom hitch receivers, frame mounted tiedowns and FastGun Turnbuckles from date of purchase against defects in material and workmanship under normal use and service, ordinary wear and tear excepted, for the ownership life of the original consumer purchaser. TorkLift will replace FREE OF CHARGE any part which proves defective in material or workmanship when presented to TorkLift, TRANSPORTATION CHARGES PREPAID, at the address above. THIS WARRANTY IS LIMITED TO DEFECTIVE PARTS REPLACEMENT ONLY. LABOR CHARGES AND/OR DAMAGE INCURRED IN INSTALLATION OR REPLACEMENT AS WELL AS INCIDENTAL AND CONSEQUENTIAL DAMAGES CONNECTED THEREWITH ARE EXCLUDED. This warranty does not include the finish or paint on our products. Rusting, cracking or peeling of the finish is also excluded. Some states do not allow the exclusion or limitation of incidental or consequential damages, so the above limitation or exclusion may not apply to you. Any damage to the hitch, custom hitch receiver or frame mounted tiedowns as a result of misuse, abuse, neglect, accident, improper installation or any use violative of instructions furnished by us WILL VOID THE WARRANTY. This warranty gives you specific legal rights, and you may also have rights which vary from state to state. With warranty service or performance, you may be able to go to a small claims court, a state court or a federal district court.



**322 NO. RAILROAD    PHONE (800) 246-8132**  
**KENT, WA 98032    FAX    (253) 854-8003**

**OR VISIT OUR WEBSITE: [WWW.TORKLIFT.COM](http://WWW.TORKLIFT.COM)**

Dear Valued Customer,

Thank you for making TorkLift your choice for truck, camper packages and accessories for your vehicle. By choosing TorkLift products, you have chosen a company that has been serving the RV industry for nearly 30 years and whose name has become synonymous with strength, quality and advanced design and installation.

Please take a few moments of your time to complete the Product Registration Warranty Card on the next page and send it back to us at the address listed above. When registering your newly purchased TorkLift products, you can be assured that your contact information is secure and that you and your product are getting the attention and respect that you deserve.

Thank you again for choosing TorkLift quality products.



## OFFICIAL WARRANTY REGISTRATION CARD

PLEASE FILL OUT THIS FORM COMPLETELY AND RETURN TO TORKLIFT WITHIN 30 DAYS OF PURCHASE ACCOMPANIED BY A COPY OF YOUR ORIGINAL RECEIPT

TODAY'S DATE: \_\_\_\_\_

### 1. PART(S) PURCHASED

PART#: \_\_\_\_\_ PART#: \_\_\_\_\_  
PART#: \_\_\_\_\_ PART#: \_\_\_\_\_

### 2. PURCHASER INFORMATION

NAME: \_\_\_\_\_

ADDRESS: \_\_\_\_\_  
\_\_\_\_\_

CITY: \_\_\_\_\_ STATE: \_\_\_\_\_ ZIP / POSTAL CODE: \_\_\_\_\_

PHONE: (\_\_\_\_) \_\_\_\_\_ - \_\_\_\_\_ EMAIL: \_\_\_\_\_

### 3. TRUCK INFORMATION

YEAR: \_\_\_\_\_ MAKE: \_\_\_\_\_

MODEL: \_\_\_\_\_ BED LENGTH: \_\_\_\_\_

### 4. CAMPER INFORMATION

YEAR: \_\_\_\_\_ MAKE: \_\_\_\_\_ MODEL: \_\_\_\_\_

### 5. DEALER INFORMATION

PURCHASED FROM: \_\_\_\_\_

ADDRESS: \_\_\_\_\_

CITY: \_\_\_\_\_ STATE: \_\_\_\_\_ ZIP / POSTAL: \_\_\_\_\_

INSTALLED BY:  OWNER  ABOVE DEALER  ANOTHER DEALER

IF ANOTHER DEALER, WHO: \_\_\_\_\_