



OVER 35 YEARS OF INNOVATION, QUALITY, SAFETY.



TRUE FRAME MOUNTED CAMPER TIE DOWNS

IMPORTANT OWNER-OPERATOR INSTALLATION INSTRUCTIONS

F2016



REVISED vers6 BY: JL 8/7/15

TECH SUPPORT (800) 246-8132

**AFTER INSTALL, PLEASE GIVE
THIS BOOKLET TO YOUR CUSTOMER**

Warnings

Truck Bed and Camper Protection

Torklift **does not** recommend installing your camper on top of a plastic bed liner (or other compressible material such as foam). These materials can act as a spring, causing increased vertical truck camper movement independent of the vehicle. Plastic bed liners can slide on the truck bed surface, and the truck camper can slide on top of the bed liner. Using a plastic bed liner or similar compressible material will void your warranty and may additionally cause truck bed and/or camper damage.

Minor movement or settling can occur in some incidental harsh driving conditions (on or off-road). A rubber bed mat is recommended to protect the truck bed and camper, but is not a requirement to maintain the Torklift legendary lifetime warranty.

Suspension

To significantly reduce body roll, sag and sway Torklift strongly recommends the StableLoad. Torklift International StableLoads improve safety, handling, and to help level your truck. More information can be found at (www.Torklift.com/stableload).

If your truck is additionally equipped with suspension air bags Torklift cautions against over pressurization as this may lead to unsafe vehicle handling characteristics. We have found that airbags used in conjunction with StableLoads have allowed operators to lower air bag pressure by 50% or more. Only pressurize suspension air bags enough to level the truck.

F2016 PARTS INVENTORY

2 - TIE-DOWN RECEIVER	2 - 1/2" X 3-3/4" GRD 8 BOLT
2 - STANDARD BENT TIE-DOWN INSERT	1 - 7/16" X 2" GRD 5 BOLT
7 - 1/2" FLAT WASHER	2 - 1/2" X 4" GRD 8 BOLT
2 - 1/2" BOLT FISHER	3 - 1/2" STAR WASHER
4 - 1/2" X 2" GRD 5 BOLT	7 - 1/2" LOCK WASHER
3 - 5/8" HOOK BRACKET	7 - 1/2" GRD 8 NUT
1 - 3/16" 3-HOLE E-BRAKE BRACKET	1 - 7/16" NYLON NUT
1 - 3/8" HOOK BRACKET	2 - 1/4" SNAPPER PIN
1 - 5/16" X 2"(5cm) X 2"(5cm) CENTER HOLE PLATE WASHER	2 - 1/2" SERRATED NUT
4 - 1" X 2" PLATE WASHER	1 - 1/4" 2-HOLE PLATE WASHER

INSTALLATION INSTRUCTIONS:

READ AND UNDERSTAND ALL INSTRUCTIONS BEFORE STARTING:

STEP 1)

DRIVERS SIDE FIRST: Locate and remove the series of nuts that hold the gas tank cover to the frame, and let hang. **(PHOTO A)**

STEP 2)

Locate the tank strap, and just to the right, there should be a notch in the gas tank. Take the 3/8" hook bracket and a 1/2" x 3-3/4" grade 8 bolt. Place the bolt through the tube on the hook bracket. Place it sideways against the tank, push up, and hook it onto the frame. **(PHOTO B, C)**

STEP 3)

Locate the oval hole in the center of the frame to the right of the tank strap. Take the supplied 1/2" bolt fisher with the coiled end first, and insert it through the oval hole and up around the frame. Place one 1/2" x 2" grade 5 bolt along with one 1/2" star washer and one 1"(2cm) x 2"(5cm) plate washer onto the bolt fisher and pull it through the frame until it sticks out of the oval hole. Leave the bolt fisher attached. **(PHOTO D, E)**

STEP 4)

Take one 5/8" hook bracket and one 1/2" x 4" grade 8 bolt and hook it to the top of the frame above and to the left of the previously installed bolt. **(PHOTO F)**

STEP 5)

Locate the driver's side tie-down. Slide the end of the bolt fisher through the 5/8" hole to the right of the welded gusset. Place the tie-down against the frame with all previously installed fasteners through designated holes. **(PHOTO G)**

NOTE: FOR THOSE VEHICLES THAT HAVE THE BOTTOM HOOK BRACKET ON THE LEFT SIDE OF THE TIE-DOWN RECEIVER, PROCEED TO STEP 6.

NOTE: FOR THOSE VEHICLES THAT HAVE THE BOTTOM HOOK BRACKET ON

THE RIGHT SIDE OF THE TIE-DOWN RECEIVER, PROCEED TO STEP 9.

STEP 6)

Take one 1/2" flat washer, one 1/2" lock washer, and one 1/2" nut and place them onto each previously installed bolt. Tighten down to 75 ft-lbs(101nm) using a torque wrench.

* Star washers help installations where no access is available with a wrench. Passenger side does not use star washers.

STEP 7)

REPEAT INSTALLATION PASSENGER SIDE: Some electrical wires may need to be moved on either side of the frame. Install the bottom 5/8" hook bracket with one 1/2" x 3-3/4" to the right of the tie-down receiver. Install the top 5/8" hook bracket with the supplied 1/2" x 4" grade 8 bolt (**PHOTO H**)

STEP 8)

Disconnect the e-brake bracket at the junction point in front of the rear spring perch. (For ease of installation of the e-brake relocating bracket, make sure the e-brake is disengaged. Slide the brake line through one of the holes and re-bolt it back into position. Using one 1/2" x 2" grade 5 bolt, one 1/2" flat washer, one 1/2" lock washer, and one 1/2" hex nut (**PHOTO I, J**)

COMPLETE:

STEP 9)

Take one 1/2" flat washer, one 1/2" lock washer, and one 1/2" nut and place them onto each previously installed bolt. Hand tighten.

STEP 10)

To the left of the tie-down receiver, place one 1/2" x 2" grade 5 bolt along with one 1" x 2" plate washer on the backside of the tie-down plate. Take the 1/4" 2-hole plate washer and place over previously installed bolt, and thread with one 1/2" serrated nut. Hand tightens.

NOTE: FOR THOSE VEHICLES THAT HAVE THE FACTORY SIDE IMPACT BRACKET (FSIB) IN PHOTOS, PROCEED TO STEP 11.

NOTE: FOR THOSE VEHICLES THAT DO NOT HAVE THE FACTORY SIDE IMPACT BRACKET (FSIB) IN PHOTOS, PROCEED TO STEP 14.

STEP 11)

Remove the 7/16" nut from the lower left corner of the factory side impact bracket. Place the other end of the 1/4" two hole plate washer over the 7/16" factory bolt. Replace the factory nut with one 1/2" flat washer and one 7/16" grade 5 nylon nut. Tighten to 50 ft-lbs(67nm) using a torque wrench. Tighten all other 1/2" fasteners to 75 ft-lbs(101nm) using a torque wrench. **(PHOTO K, L)**

* Star washers help installations where no access is available with a wrench. Passenger side does not use star washers.

STEP 12)

-REPEAT INSTALLATION PASSENGER SIDE: Some electrical wires may need to be moved on either side of the frame. Install the bottom 5/8" hook bracket with one 1/2" x 3-3/4" to the right of the tie-down receiver. Install the top 5/8" hook bracket with the supplied 1/2" x 4" grade 8 bolt **(PHOTO H)**

STEP 13)

Disconnect the e-brake bracket at the junction point in front of the rear spring perch. (For ease of installation of the e-brake relocating bracket, make sure the e-brake is disengaged. Slide the brake line through one of the holes and re-bolt it back into position. Using one 1/2"x 2" grade 5 bolt, one 1/2" flat washer, one 1/2" lock washer, and one 1/2" hex nut **(PHOTO I, J)**

COMPLETE:

STEP 14)

Right above previously installed bolts and 1/4" two hole plate washer, there will be an elongated oval hole. Take the 1/2" bolt fisher and thread one 7/16" x 2" grade 5 bolt, one 1/2" star washer and one 1"(2cm) x 2"(5cm) plate washer and slide them one by one through the hole oval hole and pull back through. Place a 2" x 2" center hole plate washer over the 7/16" bolt and one 1/2" flat washer and one 7/16" grade 5 nylon nut. Tighten to 50 ft-lbs(67nm) using a torque wrench. Tighten all other 1/2" fasteners to 75 ft-lbs(101nm) using a torque wrench. **(PHOTO M, N)**

* Star washers help installations where no access is available with a wrench. Passenger side does not use star washers.

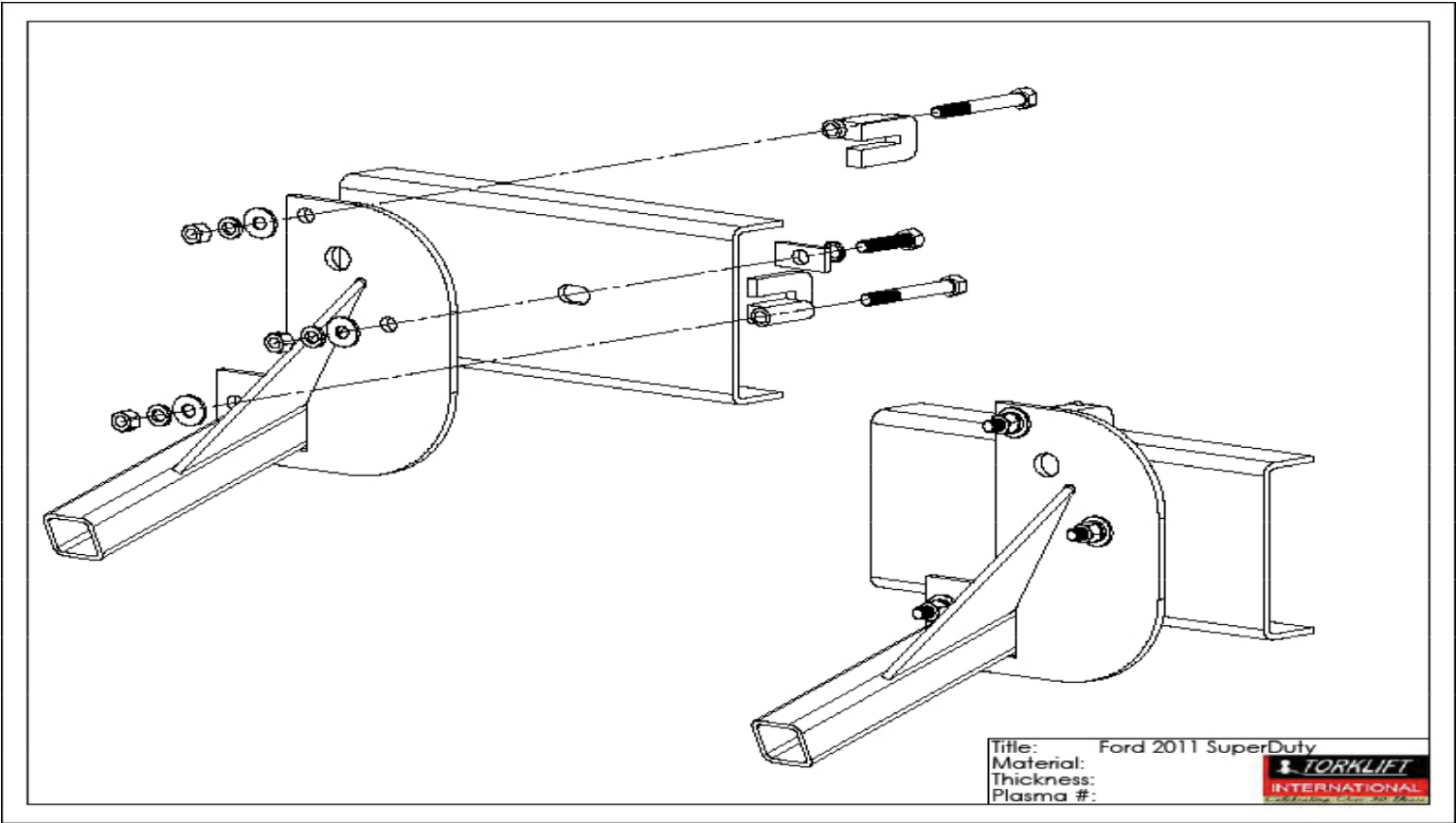
STEP 15)

-REPEAT INSTALLATION PASSENGER SIDE: Some electrical wires may need to be moved on either side of the frame. Install the bottom 5/8" hook bracket with one 1/2" x 3-3/4" to the right of the tie-down receiver. Install the top 5/8" hook bracket with the supplied 1/2" x 4" grade 8 bolt **(PHOTO H)**

STEP 16)

Disconnect the e-brake bracket at the junction point in front of the rear spring perch. (For ease of installation of the e-brake relocating bracket, make sure the e-brake is disengaged. Slide the brake line through one of the holes and re-bolt it back into position. Using one 1/2"x 2" grade 5 bolt, one 1/2" flat washer, one 1/2" lock washer, and one 1/2" Hex nut **(PHOTO I, J)**

COMPLETE:



HOOK BRACKETS INSTALLED TO FRAME:

**SHOWING HOW IT HOOKS TO
THE FRAME:**

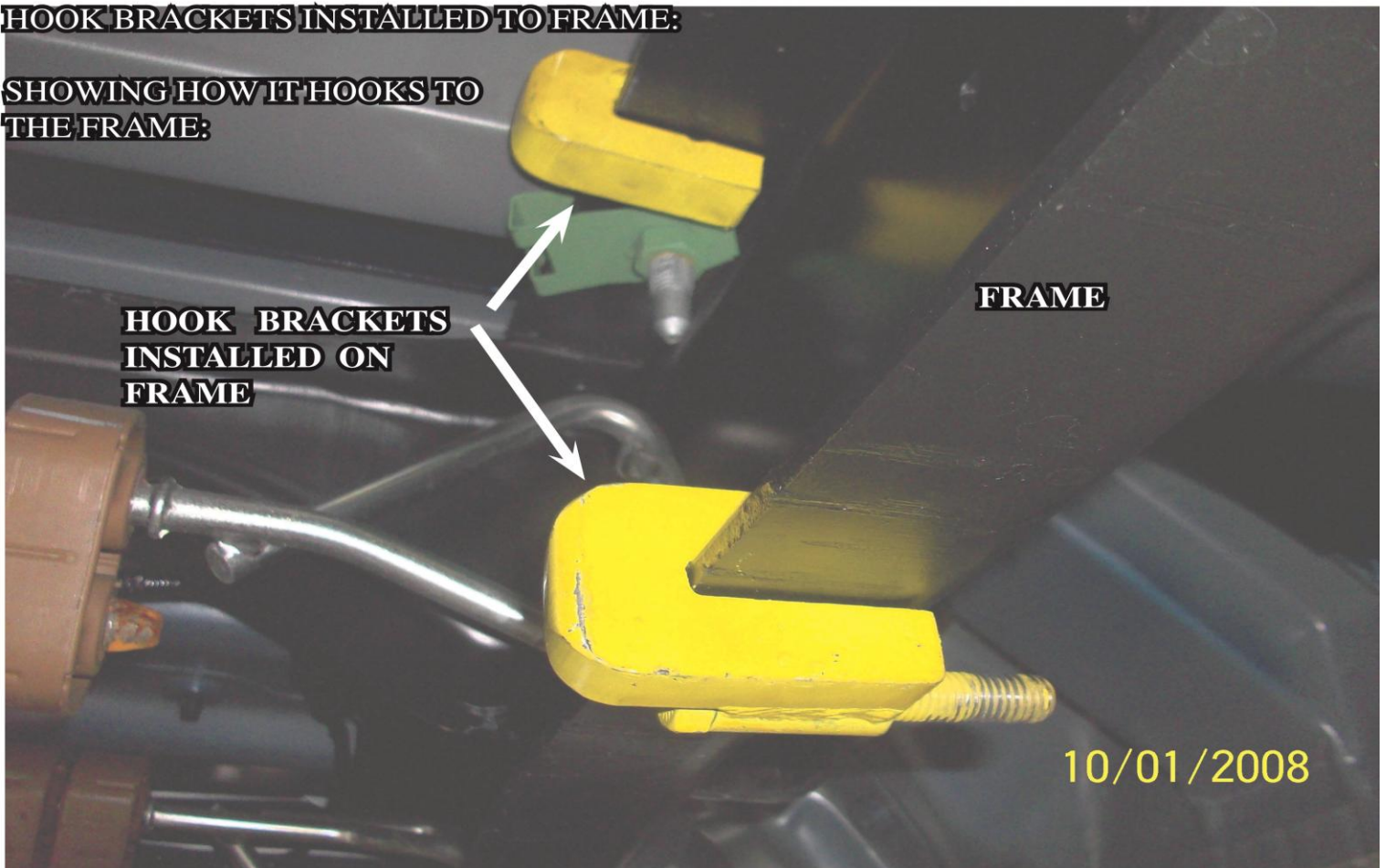


PHOTO A

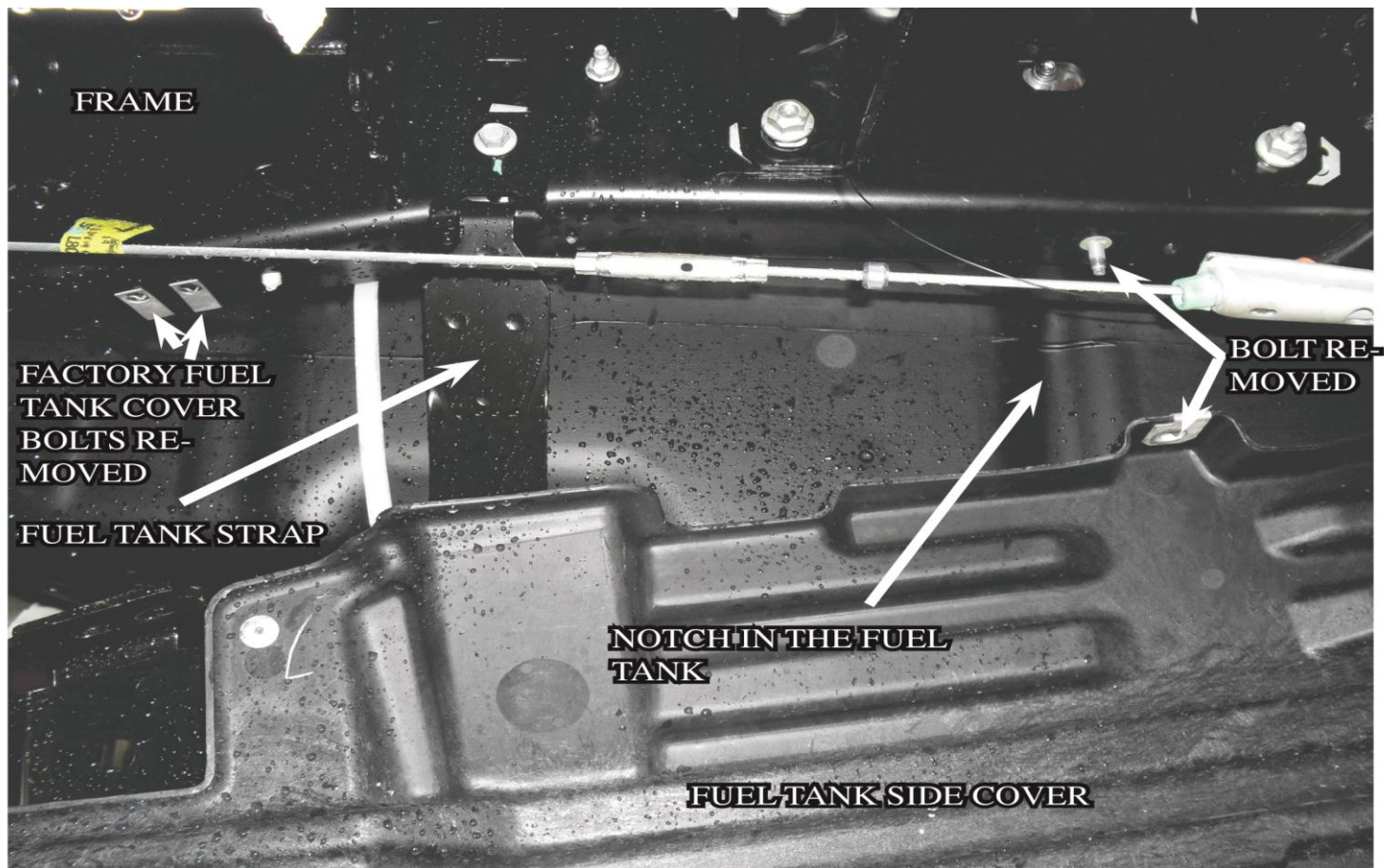


PHOTO B

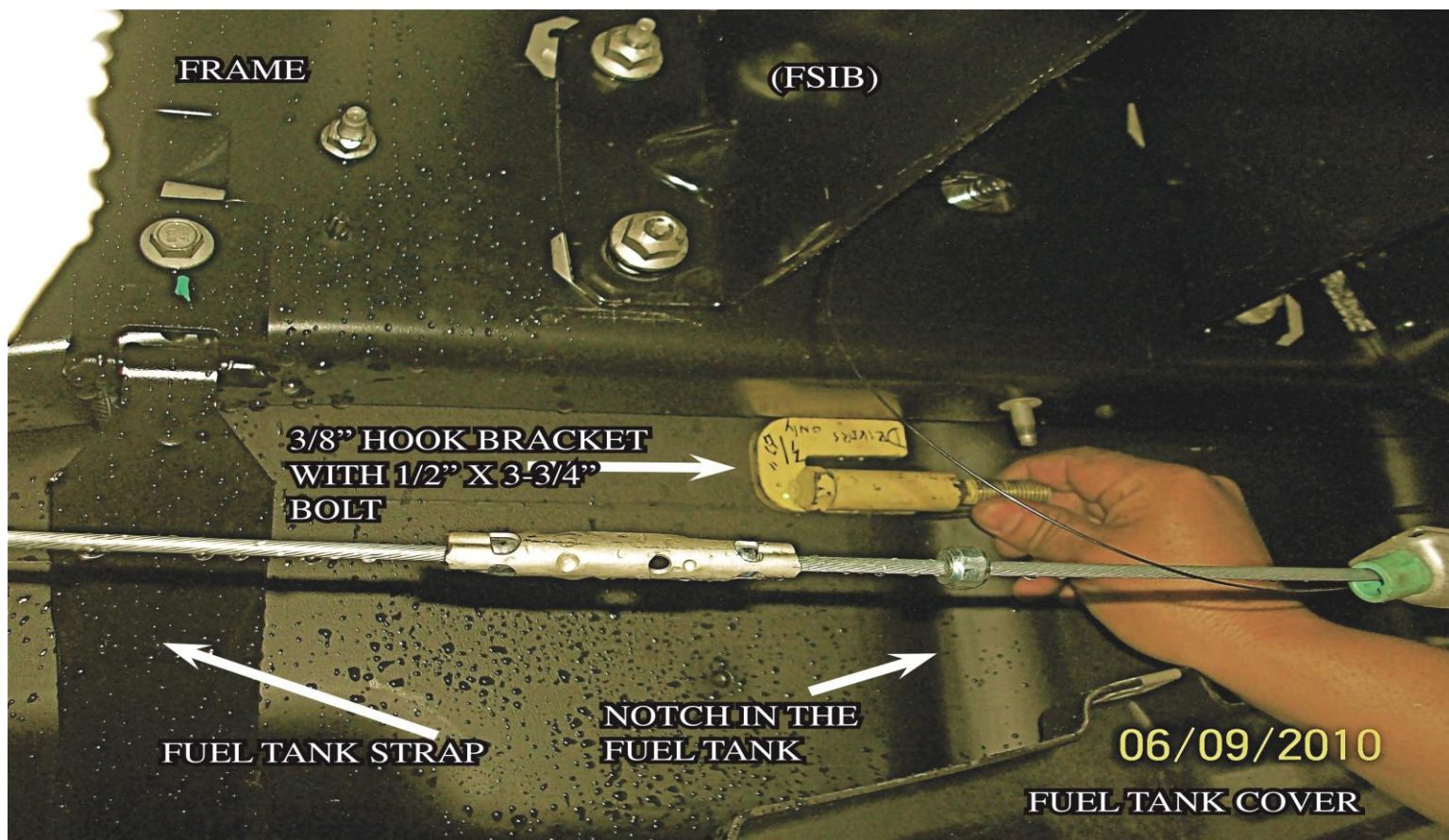


PHOTO C

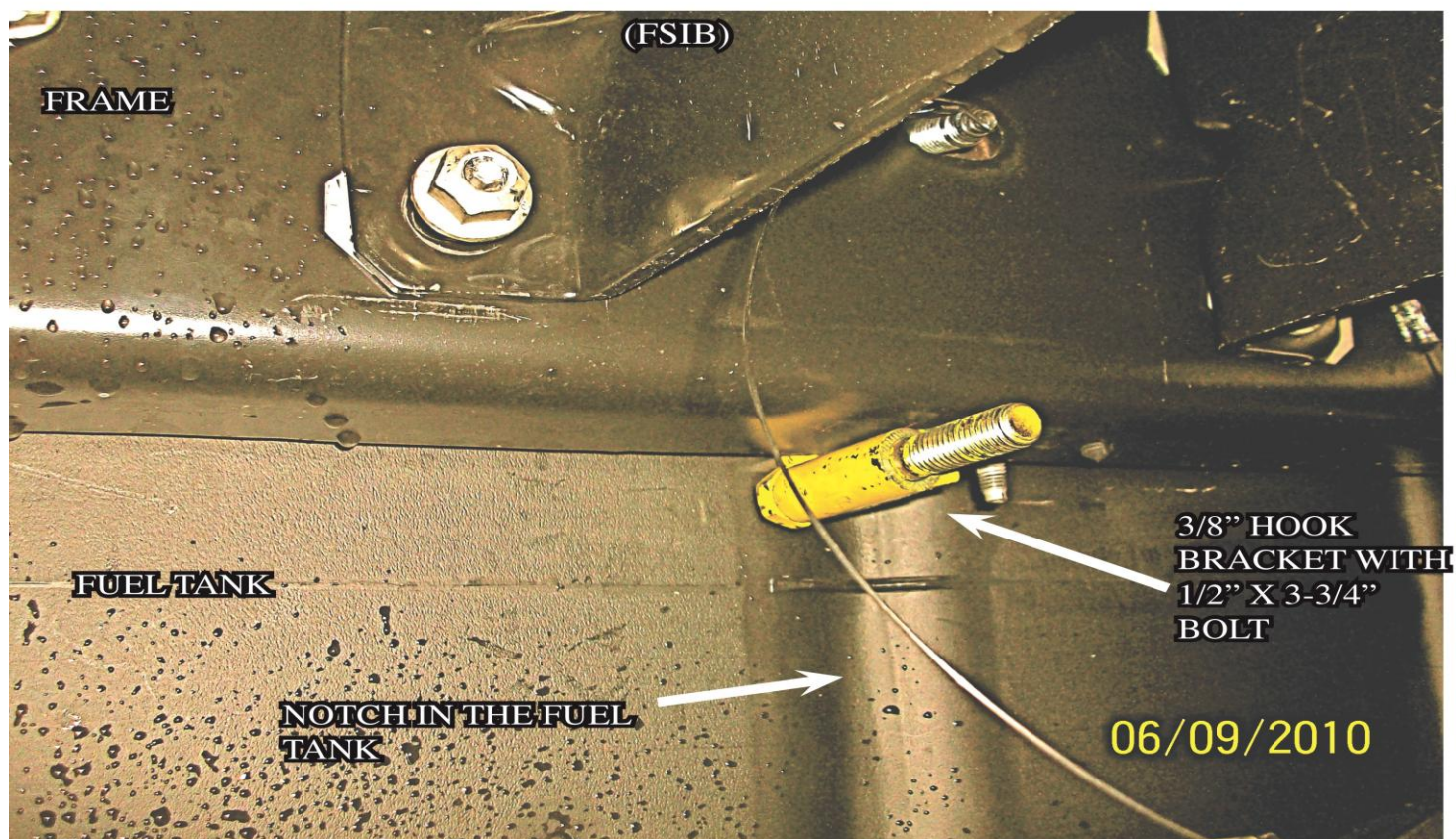


PHOTO D

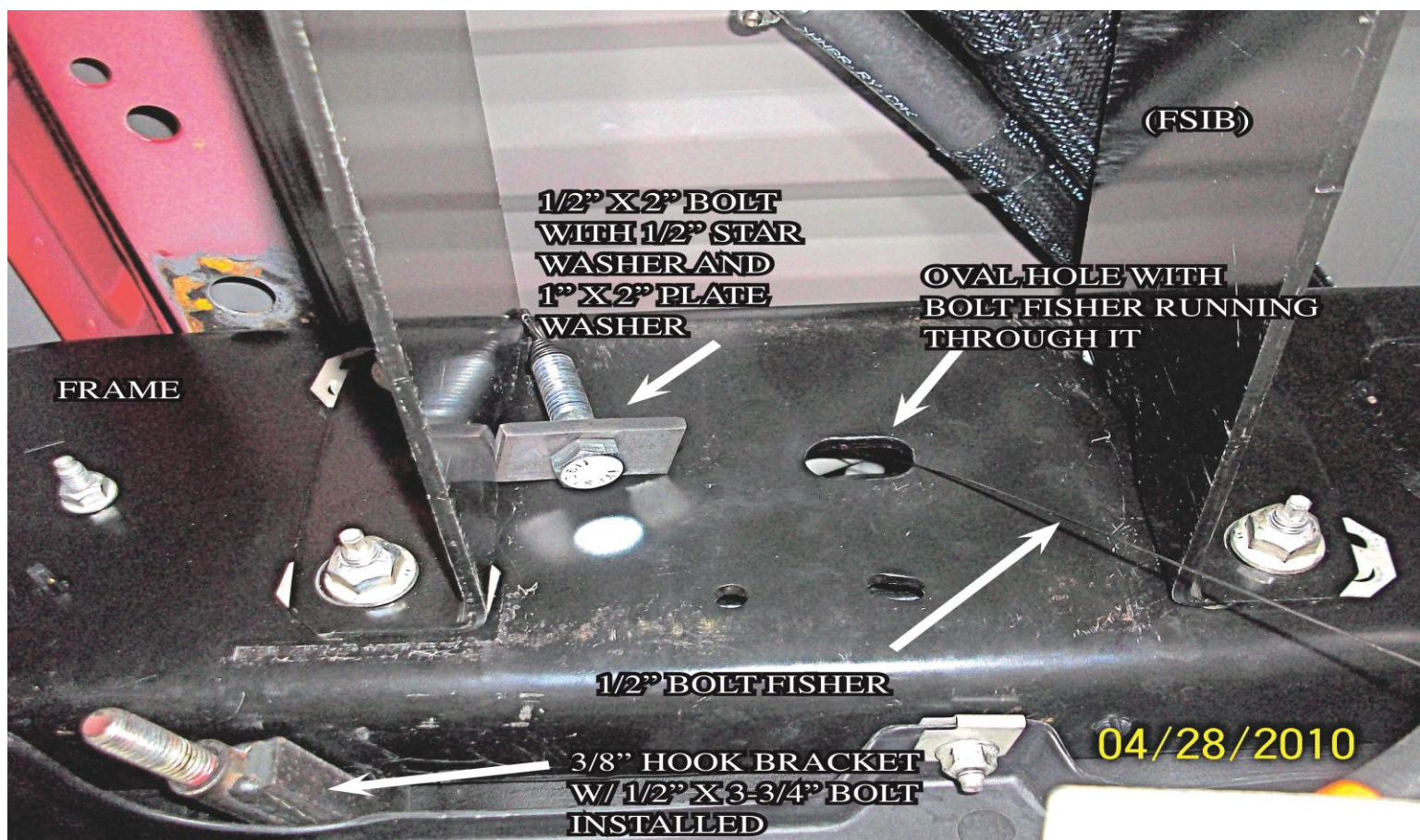


PHOTO E

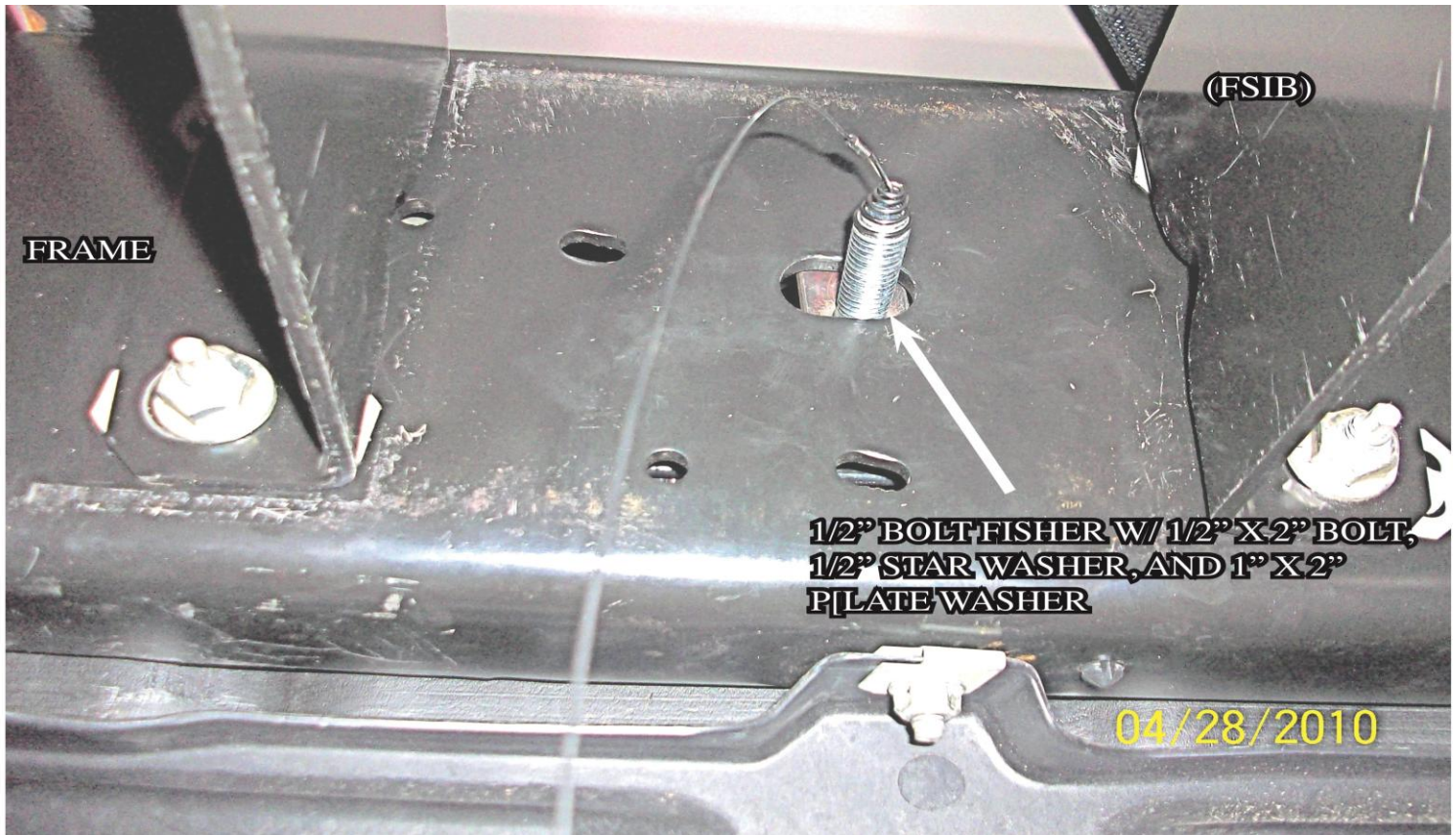


PHOTO F

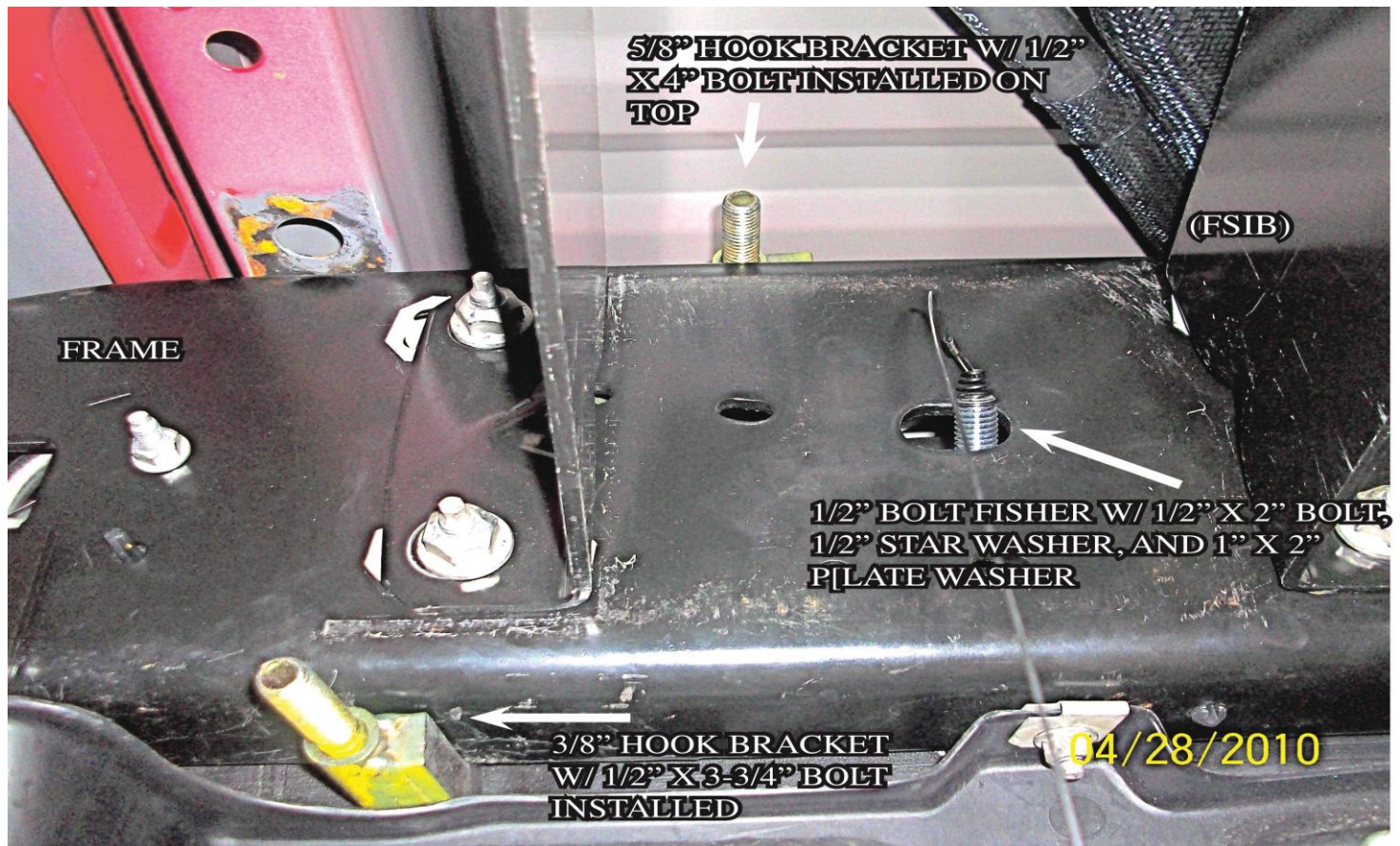


PHOTO G

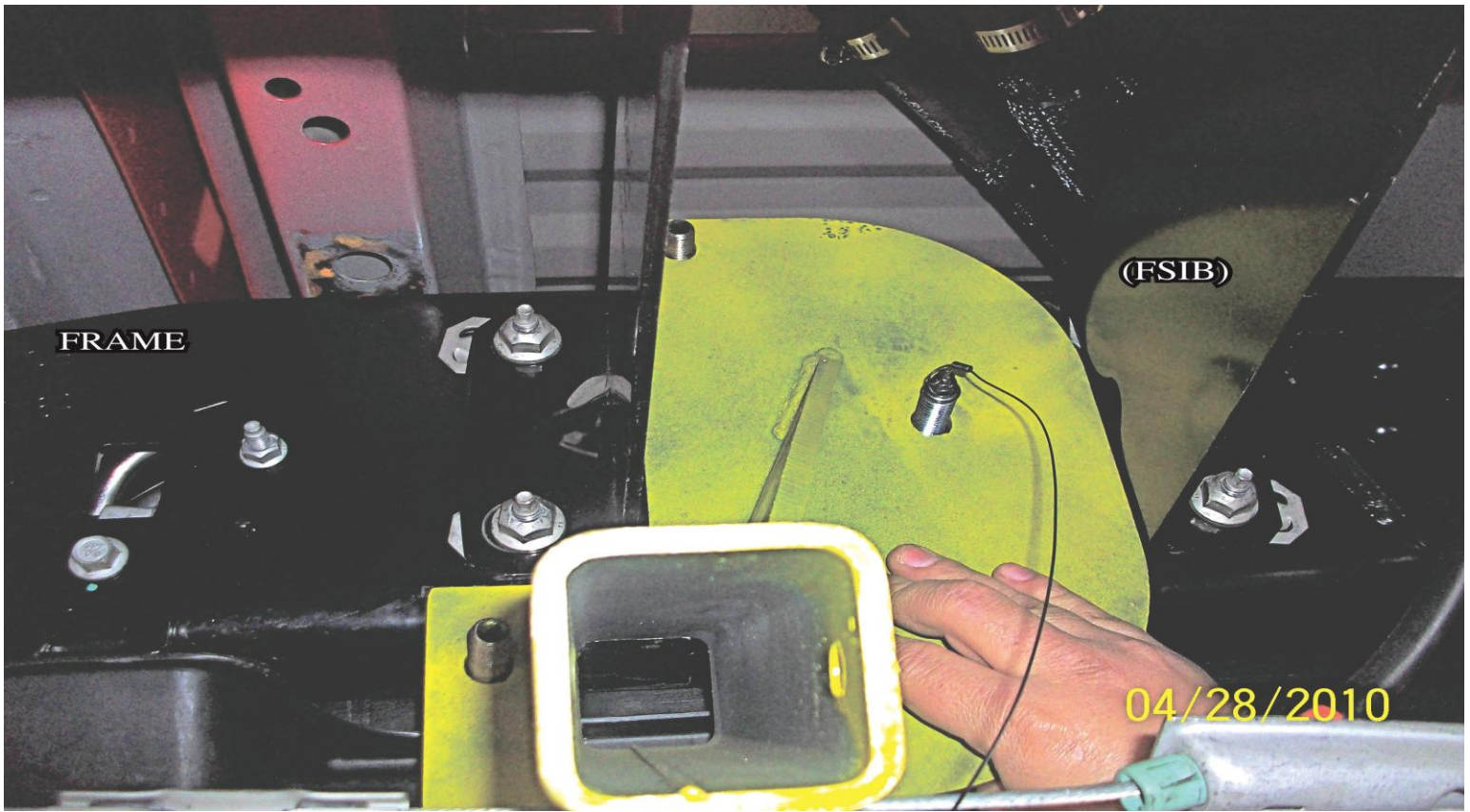


PHOTO H

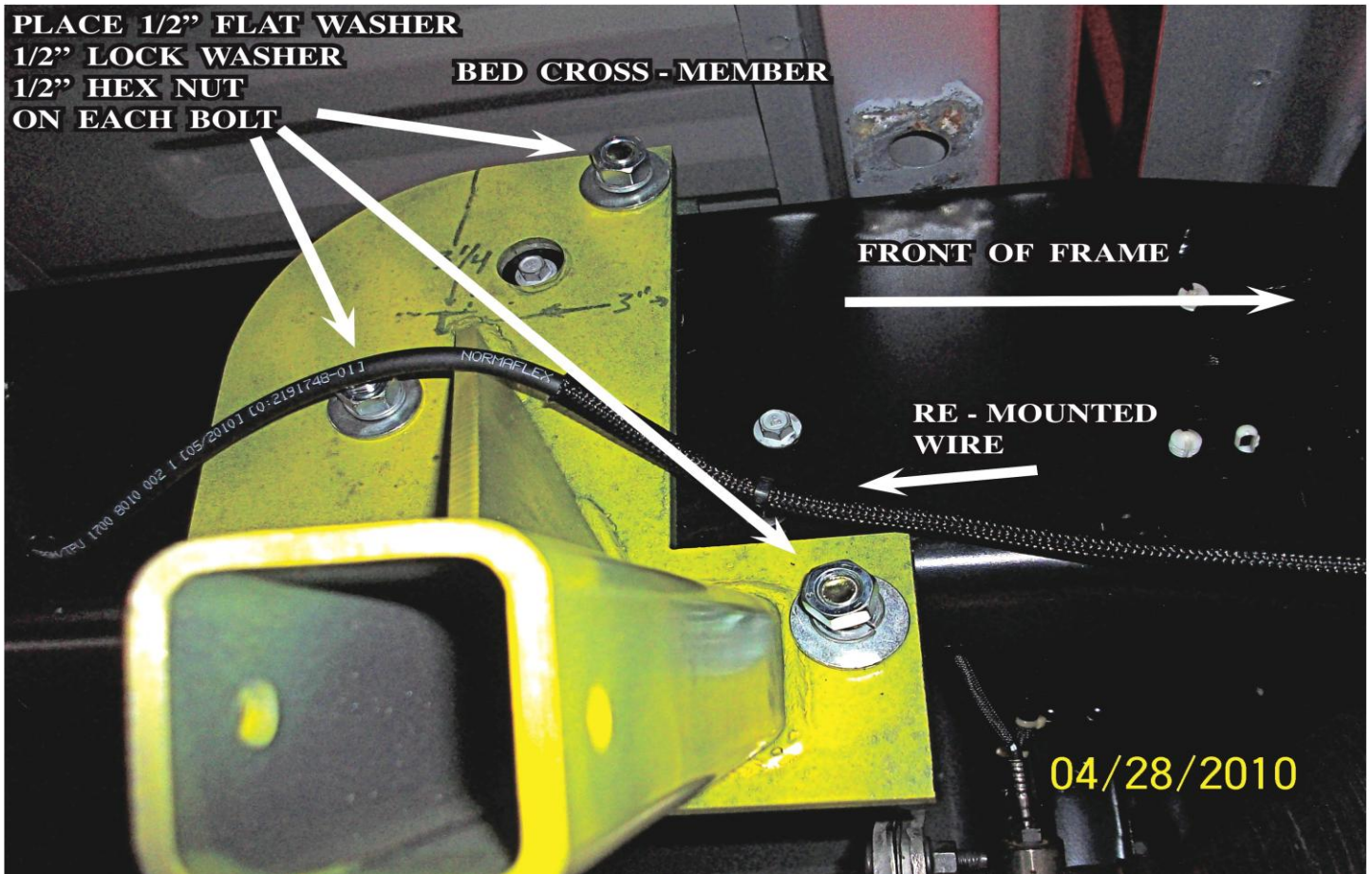


PHOTO I

MAKE SURE YOU ARE ON A LEVEL GROUND, YOUR TRUCK IS PARKED, AND TIRES ARE CHALKED BEFORE RELEASING THE E-BRAKE

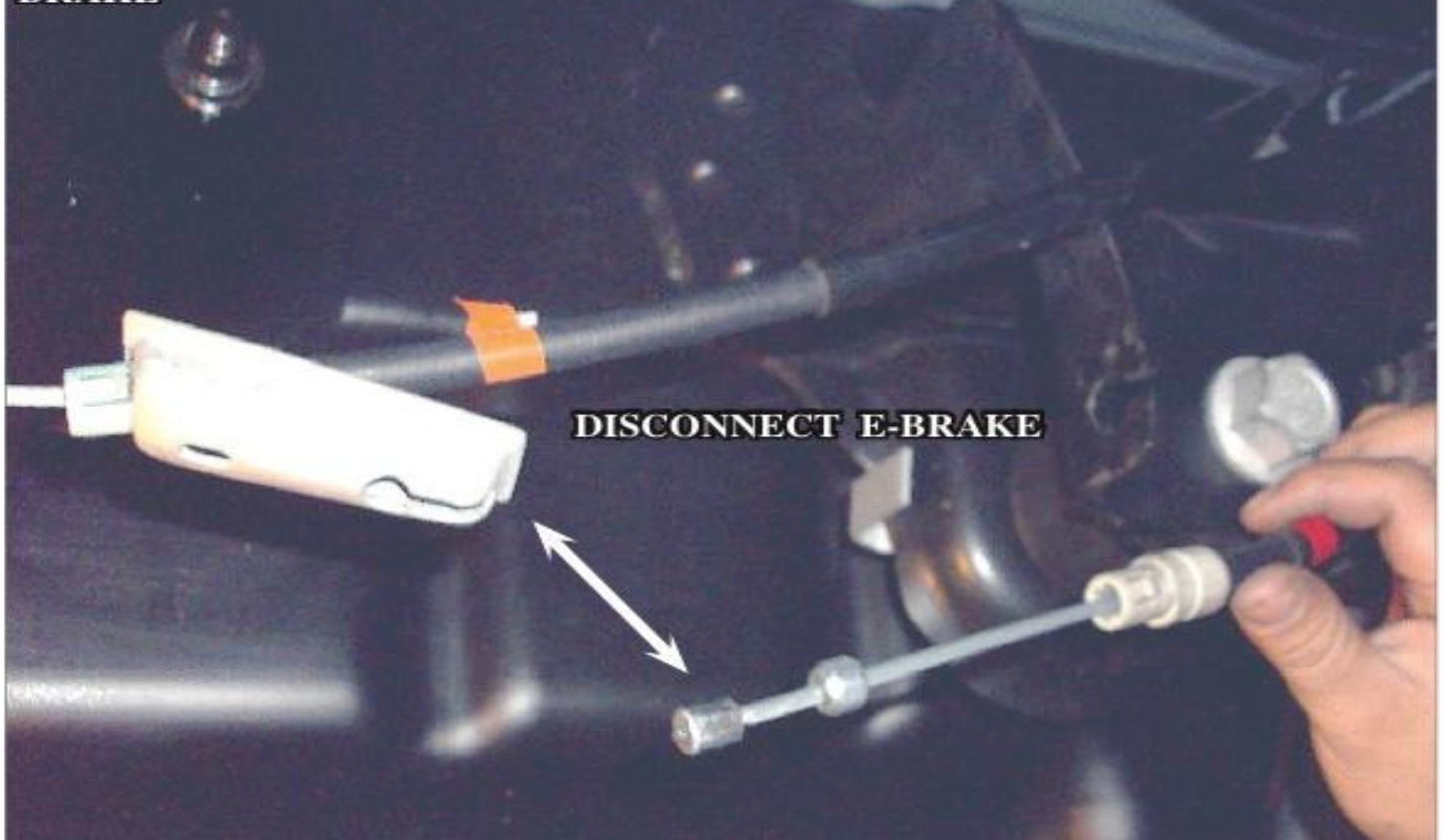


PHOTO J

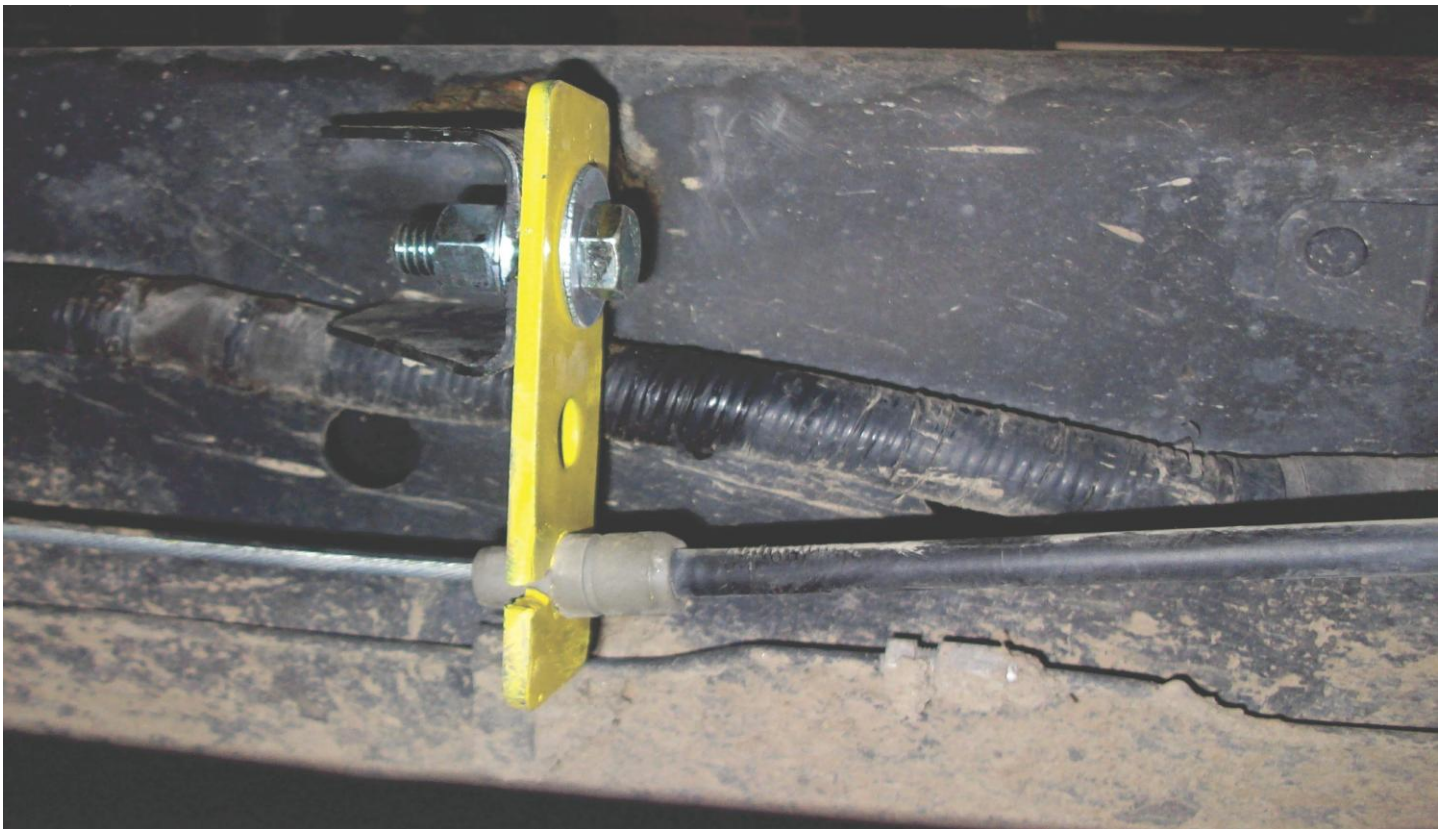


PHOTO K

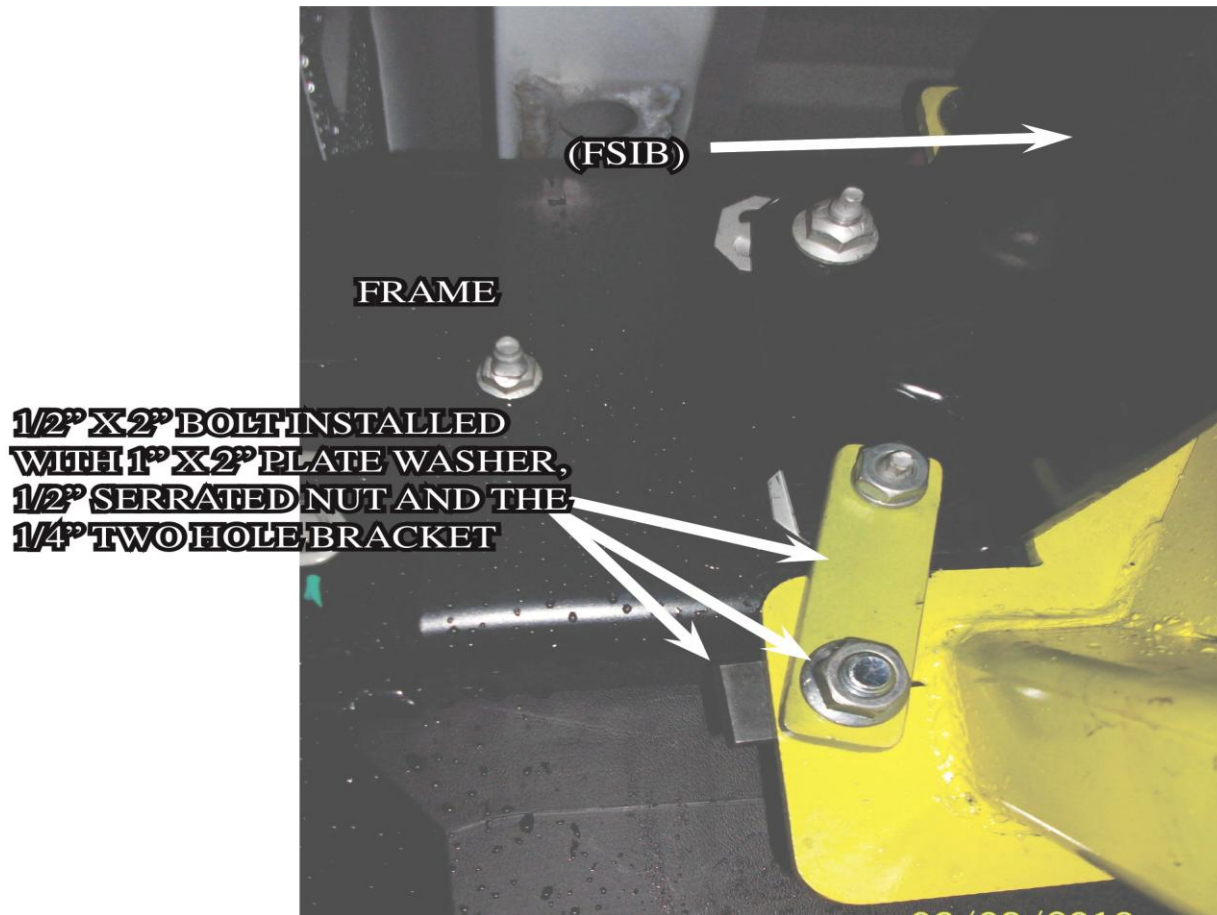


PHOTO L

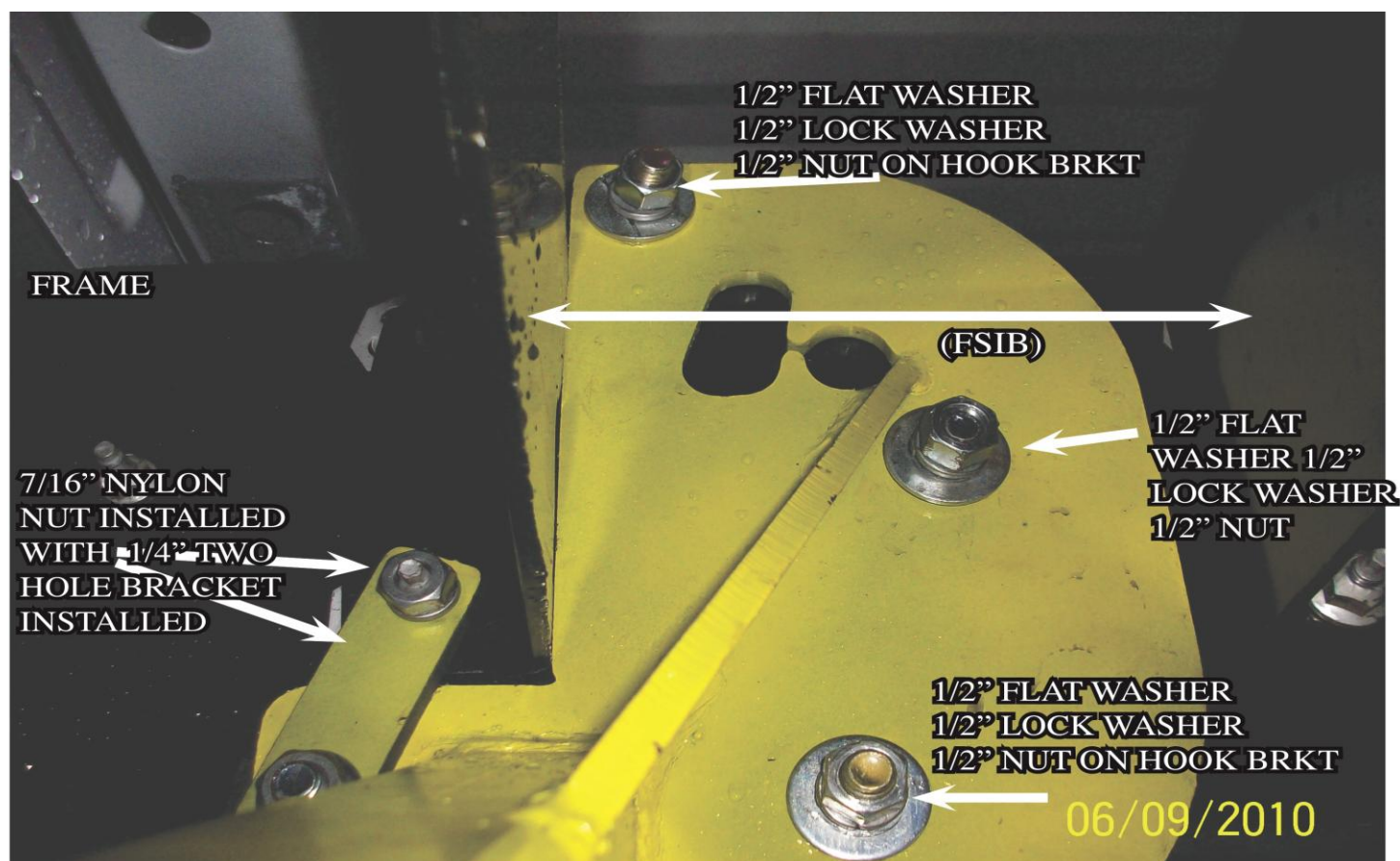


PHOTO M

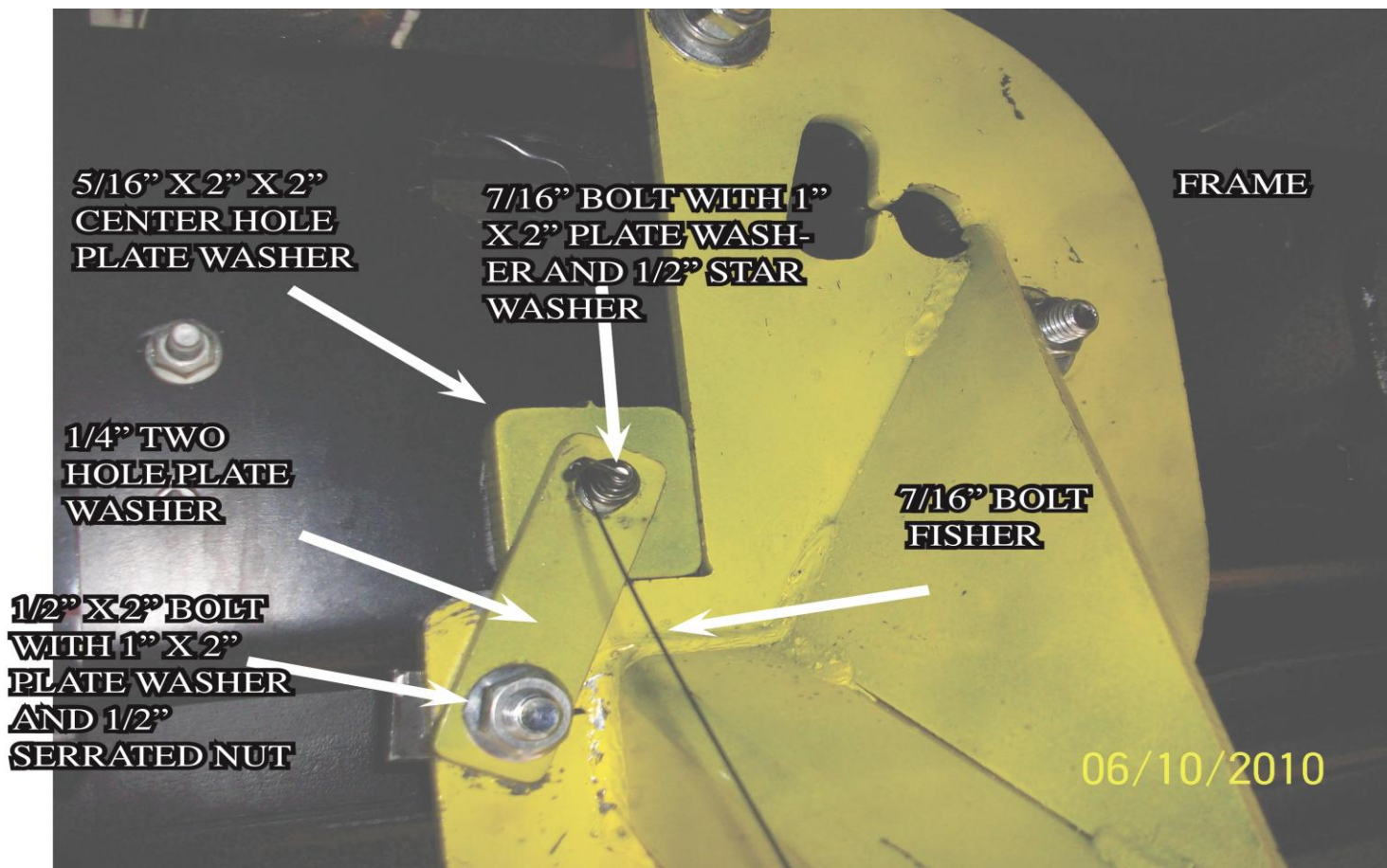
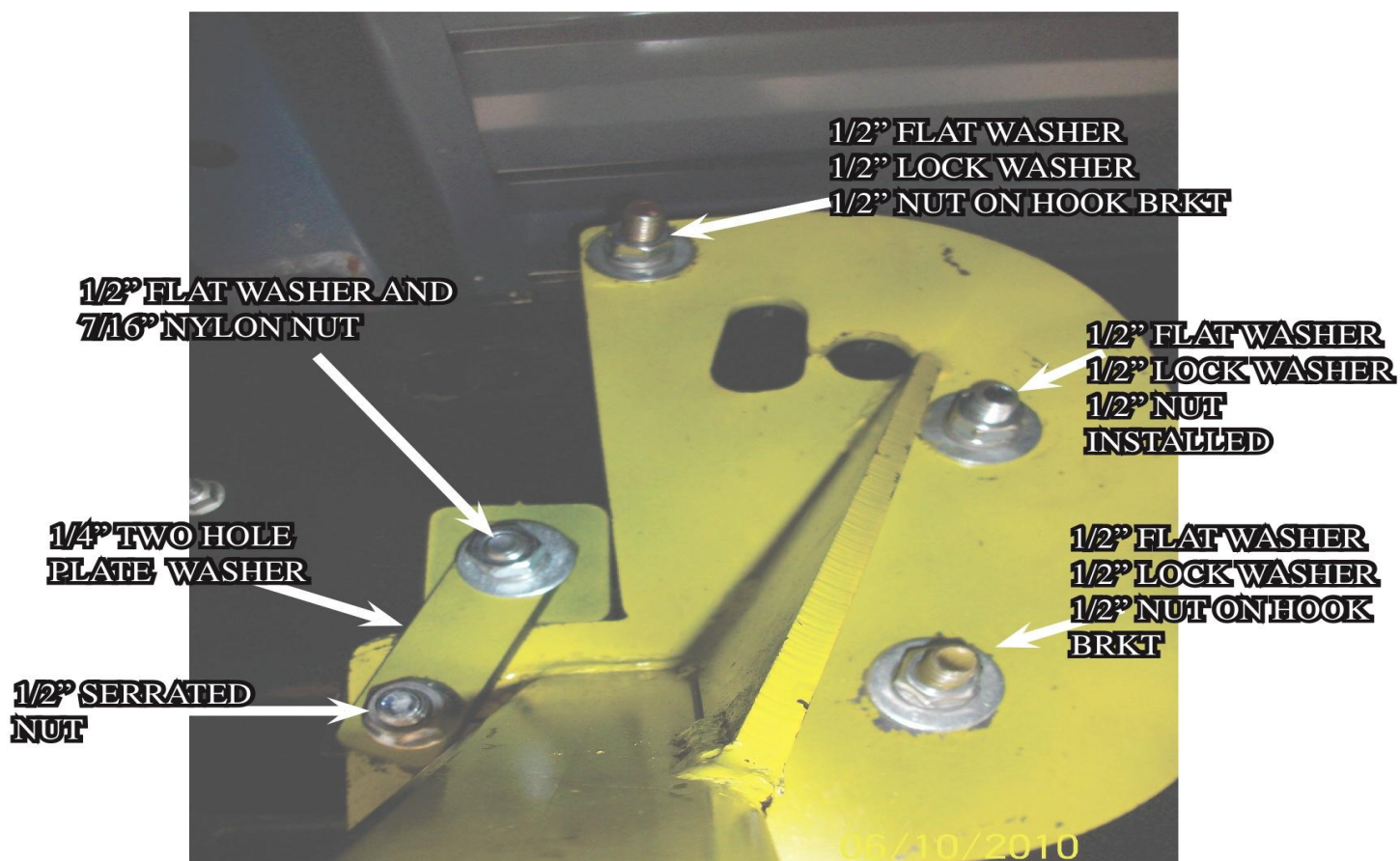


PHOTO N



INSTRUCTIONS FOR MAINTENANCE OF POLISHED STAINLESS STEEL PRODUCTS



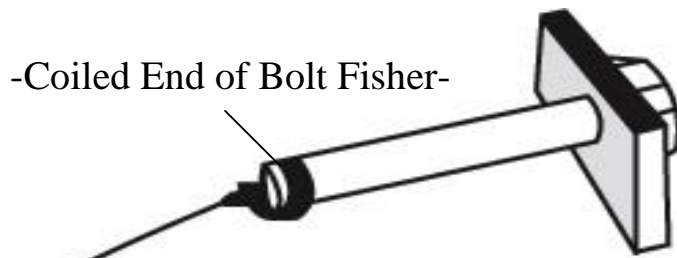
Torklift utilizes quality grade 304 stainless steel in this product.

304 stainless steel is well known for its anti corrosive properties, however in some environments such as coastal regions or when in contact with some road chemicals, corrosion may occur.

We recommend occasional polishing of our product to maintain its attractive finish. Use an approved stainless steel cleaning/polishing product, which can be purchased from any automotive supplier.

TORKLIFT'S BOLT FISHING GUIDE

Your guide to understanding the installation of our frame mounted tie downs.



-Coiled End of Bolt Fisher-

Note: The hardware may vary as to what is being fished along with the bolt. In this instance a 1" X 2" plate washer is being fished along with the hex bolt. Different applications may require fishing through various star washers and flat washers for example.

Desired Hole on Vehicle (Place the coiled end of the bolt fisher through this hole).

This side of the Bolt Fisher should come out of a hole where the required hardware (for example 1" X 2" plate washer) can pass through.



This bottom example shows the bolt when it's completely fished through the vehicle. You may find it easier to keep the bolt fisher attached until you get the tie down receiver in place so that the bolt doesn't fall into the vehicle frame.

WARNING: PULLING TOO HARD ON THE BOLT FISHER CAN RESULT IN LOST FASTENERS, OR BROKEN BOLT FISHER.

TIEDOWN INSERT INSTALLATION INSTRUCTIONS

On one end of each of your tie down inserts is a triangular plate referred to by Torklift as a bullet plate. Your tie down inserts should be installed with the shorter side of the bullet plate facing away from each other, i.e.. The shorter side of the front insert should point to the front of the truck and the shorter side of the rear insert should point towards the rear of the truck.

Once installed, attach the TorkLift directional stickers to the face of the bullet plate on the insert as a reminder.

DRIVERS SIDE FRONT



DRIVERS SIDE REAR



IMPORTANT NOTE: *Your tie down inserts are designed to have clearance inside of the receiver. This is to account for road debris, as well as aid in installation and removal. Some rattle may be expected if the inserts are left installed while not under load from the camper.*

RECOMMENDED TRUCK CAMPER

INSTALLATION INSTRUCTIONS

When securing any heavy load (especially a camper) in your truck bed, your front tie down points should pull the load forward as much as possible. Some camper anchor points may differ with different manufacturers, as well as the camper jack mounting locations. Your Torklift tie down inserts has offset triangular brackets to increase the angle of pull. These are designed to be used in the front facing forward, and the rear facing rearward but can be used in either front or rear. These recommendations are to be considered and followed as a basic rule of thumb. Obviously there will be some applications where this may not be possible. At a minimum, if opposite pull of both front and rear tie downs cannot be achieved for whatever reason, you should have at least a forward pull at the front or rear location.

If your camper does not come with Rubber Bumpers on the front lower portion of the camper, installing Rubber Bumpers (Torklift has Rubber Bumpers available Part A7001) or using a block of wood such as a 2 x 4 in the bed, will prevent the camper from damaging the front bulk head of the truck bed.

Minor movement (or settling) can occur in some incidental harsh driving conditions (on or off road). A rubber bed mat is not a requirement to maintain the lifetime warranty on a Torklift system, but a strong recommendation simply as a safety precaution to protect the truck bed, the bottom of the camper and to give the camper additional support.

TORKLIFT DOES NOT RECOMMEND: Installing your truck camper in your truck on top of a drop in plastic bed liner!!! The drop in plastic bed liners can slide on top of the truck bed surface, and the camper can slide on top of the slick surface of the bed liner. The liner can also act as a spring causing a trampoline effect increasing vertical truck camper movement, independent of the vehicle, possibly resulting in truck bed, and camper damage!

INSTRUCTIONS FOR FINISH MAINTENANCE

OF TORKLIFT PRODUCTS

POWDER COATED STEEL:

To keep your Torklift products looking good follow these guidelines. All steel powder coated Torklift products are sandblasted for maximum adhesion and use a high quality industrial urethane based powder coat. Due to the extreme, harsh, undercar environment that your Torklift products live in, (consistently sprayed with corrosive road chemicals such as salt, and road debris), Torklift does not warranty the power coated finish.

To minimize corrosion from these factors on powder coated steel products, Torklift recommends regularly cleaning and inspecting the powder-coated surface and touching up any affected areas with enamel or urethane based aerosol paint product. If there are any areas of surface rust, there are also aerosol spray rust converters available on the market that can be used as a preparation to touch-up paint application. These finish maintenance products are available at any automotive parts supplier.

POLISHED STAINLESS STEEL:

Torklift utilizes quality grade 304 stainless steel in our stainless steel polished products. 304 stainless steel is well known for its anti-corrosive properties. However, in some environments such as coastal regions or when coming in contact with some road chemicals, corrosion may occur.

For a quick clean simply use WD40 and a cloth rag. We also recommend occasional polishing of our polished stainless products to maintain their attractive finish. Use an approved stainless steel chrome or aluminum mag wheel polish cleaning product, which can be purchased from any automotive parts supplier.

Torklift International Limited Lifetime Warranty Information

322 Railroad Ave North, Kent, WA 98032

Torklift will require proof of purchase to register, with pictures of any defective product before issuing a replacement. Torklift will not register any product without proof of purchase, which can be faxed, scanned, emailed, or mailed to the information provided below. Torklift warrants its hitches, custom hitch receivers, frame mounted tie downs, turnbuckles, and accessories (excluding wire harnesses which carry a 90 day warranty) from date of purchase against defects in material and workmanship under normal use and service for the ownership life of the original consumer purchaser. ALL COMMERCIAL APPLICATIONS ARE WARRANTED FOR A PERIOD OF 90 DAYS FROM THE DATE OF INSTALLATION/SERVICE. Torklift will replace FREE OF CHARGE any part, which proves defective in material or workmanship when presented to Torklift, TRANSPORTATION CHARGES PREPAID by purchaser, at the address above. THIS WARRANTY IS LIMITED TO DEFECTIVE PARTS REPLACEMENT ONLY. LABOR CHARGES AND/OR DAMAGE INCURRED IN INSTALLATION OR REPLACEMENT, AS WELL AS INCIDENTAL AND CONSEQUENTIAL DAMAGES CONNECTED THEREWITH ARE EXCLUDED. This warranty does not include the finish or paint on our products. Rusting, cracking or peeling of the finish is also excluded. Some states do not allow the exclusion or limitation of incidental or consequential damages, so the above limitation or exclusion may not apply to you. Any damage to Torklift products as a result of misuse, abuse, neglect, accident, improper installation or any use violation of instructions furnished by Torklift or WHEN USED IN ANY COMMERCIAL APPLICATION WILL VOID THE WARRANTY. This warranty gives you specific legal rights, and you may also have rights, which vary from state to state. With warranty service, you may be able to go to a small claims court, a state court or a federal district court.



OVER 35 YEARS OF INNOVATION, QUALITY, SAFETY.

322 Railroad Ave North, Kent, WA 98032

Phone (800) 246-8132 Fax (253) 854-8003

or visit our website: www.TorkLift.com

Dear Valued Customer,

Thank you for making TorkLift your choice for truck, camper packages and accessories for your vehicle. By choosing TorkLift products, you have chosen a company that has been serving the RV industry for nearly 40 years and whose name has become synonymous with strength, quality and advanced design and installation.

Please take a few moments of your time to complete the Product Registration Warranty Card on the next page. When registering your newly purchased TorkLift products, you can be assured that your contact information is secure and that you and your product are getting the attention and respect that you deserve.

Thank you again for choosing TorkLift quality products.

**Register for your lifetime warranty and receive a free Torklift
International gift.**

To Fax: Send copies of the questionnaire, warranty card and receipt to
253-854-8003

To E-mail: Send copies of the questionnaire, warranty card and receipt to
warranty@torklift.com

To Mail: Send to Torklift International 322 Railroad Ave North, Kent, WA 98032

Frame Mounted Tie Downs

Leading the camper tie down industry in strength, quality, advanced design and installation. TorkLift TRUE frame mounted tie downs are far superior to all tie down systems available.

The TorkLift system is unique in its design and is patented. Four independent tie down points (with no belly or crossbar) working much like your receiver type trailer hitch as the inserts are removable allowing the system to be virtually undetectable when not in use.

They are designed for each make and model to fit tight to the frame so as not to compromise ground clearance. TorkLift tie downs are not universal 'one size fits all' therefore all the problems with correct fit for each particular application have been eliminated.

Original SuperHitch & SuperHitch Magnum

High strength extended hitch system engineered for safely towing all types of trailers behind your truck and camper. With a max towing capacity of 14,000 lbs.(6350kg) with an extension*, (17,000 lbs.(7711kg) to 20,000 lbs.(9071kg) without*) the Original SuperHitch and SuperHitch Magnum are rated the strongest in the industry.



CONTACT YOUR LOCAL DEALER FOR MORE DETAILS

***Weight capacity varies depending on the SuperHitch and SuperTruss extension setup.**



OVER 35 YEARS OF INNOVATION, QUALITY, SAFETY.

OFFICIAL WARRANTY REGISTRATION CARD

PLEASE FILL OUT THIS FORM COMPLETELY AND RETURN TO TORKLIFT WITHIN
30 DAYS OF PURCHASE ACCOMPANIED BY A COPY OF YOUR ORIGINAL RECEIPT

TODAY'S DATE: _____

1. PART(S) PURCHASED

PART#: _____ PART#: _____
PART#: _____ PART#: _____

2. PURCHASER INFORMATION

NAME: _____

ADDRESS: _____

CITY: _____ STATE: _____ ZIP / POSTAL CODE: _____

PHONE: (____) _____ - _____ EMAIL: _____

3. TRUCK INFORMATION

YEAR: _____ MAKE: _____

MODEL: _____ BED LENGTH: _____

4. CAMPER INFORMATION

YEAR: _____ MAKE: _____ MODEL: _____

5. DEALER INFORMATION

PURCHASED FROM: _____

ADDRESS: _____

CITY: _____ STATE: _____ ZIP / POSTAL: _____

INSTALLED BY: ☐ OWNER ☐ ABOVE DEALER ☐ ANOTHER DEALER

IF ANOTHER DEALER, WHO: _____