



TORKLIFT

I N T E R N A T I O N A L

OVER 35 YEARS OF INNOVATION, QUALITY, SAFETY.



TRUE FRAME MOUNTED CAMPER TIE DOWNS

IMPORTANT OWNER-OPERATOR INSTALLATION INSTRUCTIONS

D2101A/D2115A



REVISED vers12 BY: JL 8/6/15

TECH SUPPORT (800) 246-8132

**AFTER INSTALL, PLEASE GIVE
THIS BOOKLET TO YOUR CUSTOMER**

Warnings

Truck Bed and Camper Protection

Torklift **does not** recommend installing your camper on top of a plastic bed liner (or other compressible material such as foam). These materials can act as a spring, causing increased vertical truck camper movement independent of the vehicle. Plastic bed liners can slide on the truck bed surface, and the truck camper can slide on top of the bed liner. Using a plastic bed liner or similar compressible material will void your warranty and may additionally cause truck bed and/or camper damage.

Minor movement or settling can occur in some incidental harsh driving conditions (on or off-road). A rubber bed mat is recommended to protect the truck bed and camper, but is not a requirement to maintain the Torklift legendary lifetime warranty.

Suspension

To significantly reduce body roll, sag and sway Torklift strongly recommends the StableLoad. Torklift International StableLoads improve safety, handling, and to help level your truck. More information can be found at (www.Torklift.com/stableload).

If your truck is additionally equipped with suspension air bags Torklift cautions against over pressurization as this may lead to unsafe vehicle handling characteristics. We have found that airbags used in conjunction with StableLoads have allowed operators to lower air bag pressure by 50% or more. Only pressurize suspension air bags enough to level the truck.

NOTE:

If your vehicle is equipped with a factory fuel tank skid plate which is included with the “Off Road Group” or “Protection Group” packages, it will be necessary to drill the skid plate bracket in order to mount the tie downs. This is only necessary if your skid plate attaches to the outboard portion of the truck frame covering the forward factory frame holes. To do this, remove the two factory bolts holding the skid plate bracket to the side of the frame. Note the location of the factory hole behind the skid plate bracket and mark the skid plate bracket accordingly. Drill the skid bracket out to 17/32” with a drill bit and install the two factory bolts in the skid plate. The factory hole in the frame will now be accessible. Place a 1” x 2” plate washer to be used as a shim on to each of the newly installed tie down bolts further on in the installation. The shims will move the tie down frame plate out slightly to clear the skid plate mounting bracket. Photos are on following page.

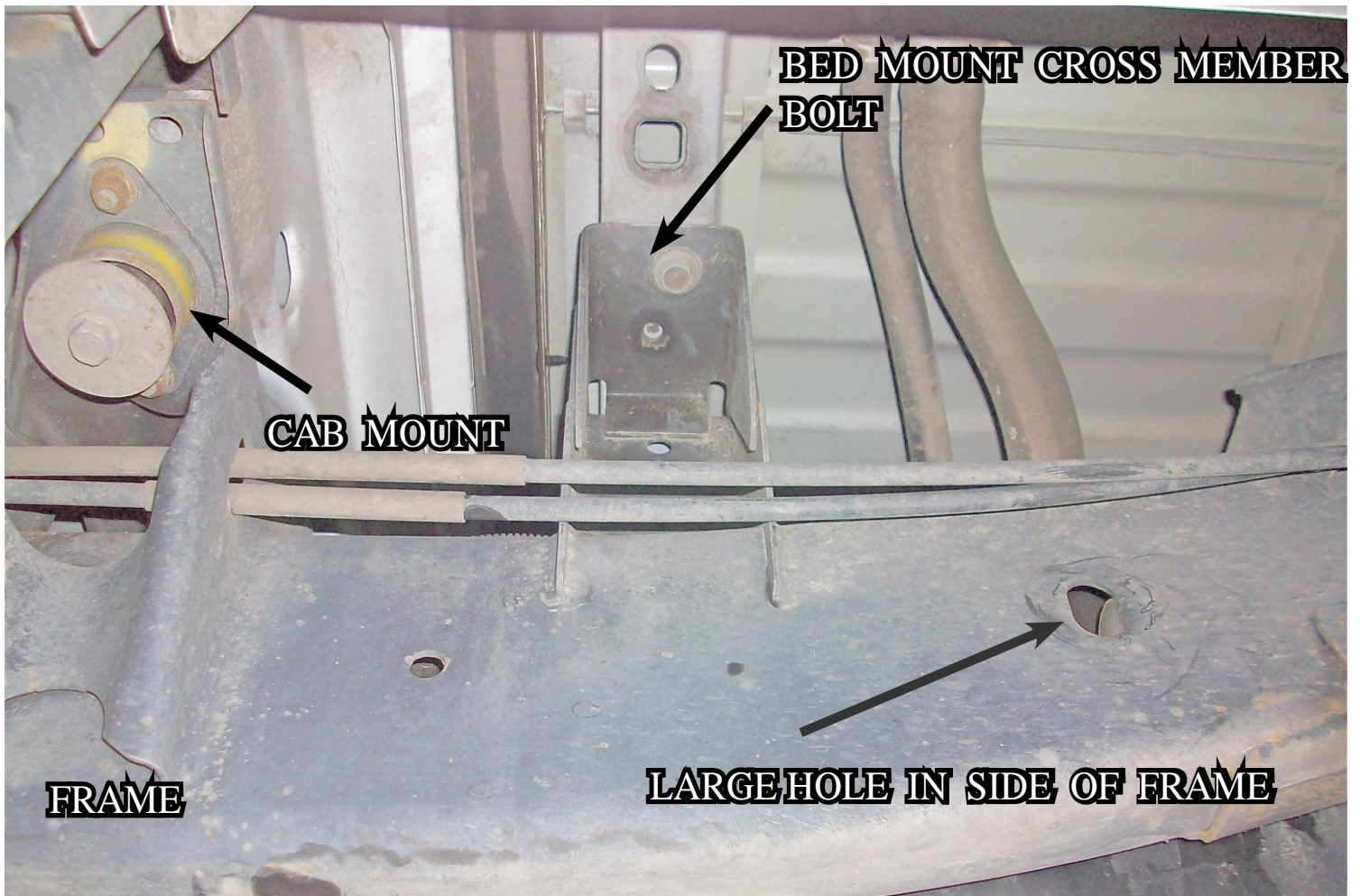
You may now continue on to the installation instructions on page 3.

D2101A / D2115A PARTS INVENTORY

| | |
|----|---|
| 2 | Aluminum Tie Down Receiver |
| 2 | Aluminum Bent Tie Down Insert |
| 4 | 1/2" X 2" Hex Bolt |
| 4 | 1" (2.54 cm) X 2" (5 cm) Plate Washer - Designed For Skid Plate |
| 2 | 1"(2.54 cm) X 3" (7.6 cm) Plate Washer |
| 10 | 1/2" Flat Washer |
| 4 | 1/2" Lock Washer |
| 2 | 5" (12.7 cm) X 3-1/4" (8.25 cm) Spacer Plate |
| 1 | 1/2" Bolt Fisher |
| 6 | 1/2" Star Washer |
| 4 | 1/2" Nut |
| 2 | Snapper pins |
| 2 | Talon Insert Stickers |
| 1 | TD Finishing Kit |

TD Finishing Kit: installation after TD installation

Drivers side view of the Cab mount and bed mount area. This is going to be the area the tie down will install. Notice the two holes in the side of the frame and the bolt for the bed cross member.



INSTALLATION INSTRUCTIONS:

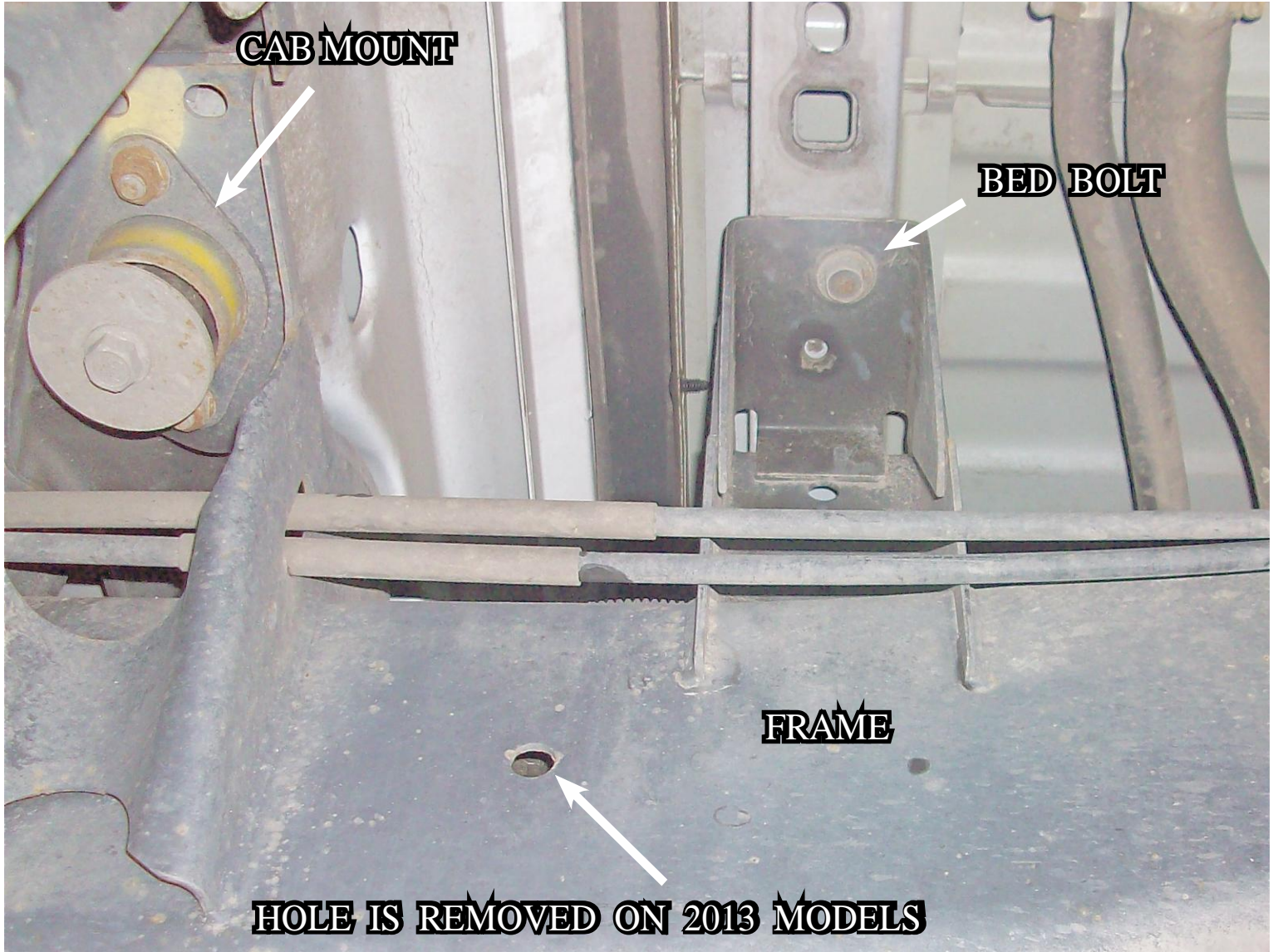
Step 1-

Locate and inventory all parts and become familiar with all brackets. Chock the vehicle tires and set Emergency Brake before attempting any part of this install.

Step 2-

Remove the factory upper bed bolt (**Photo 2.1**)

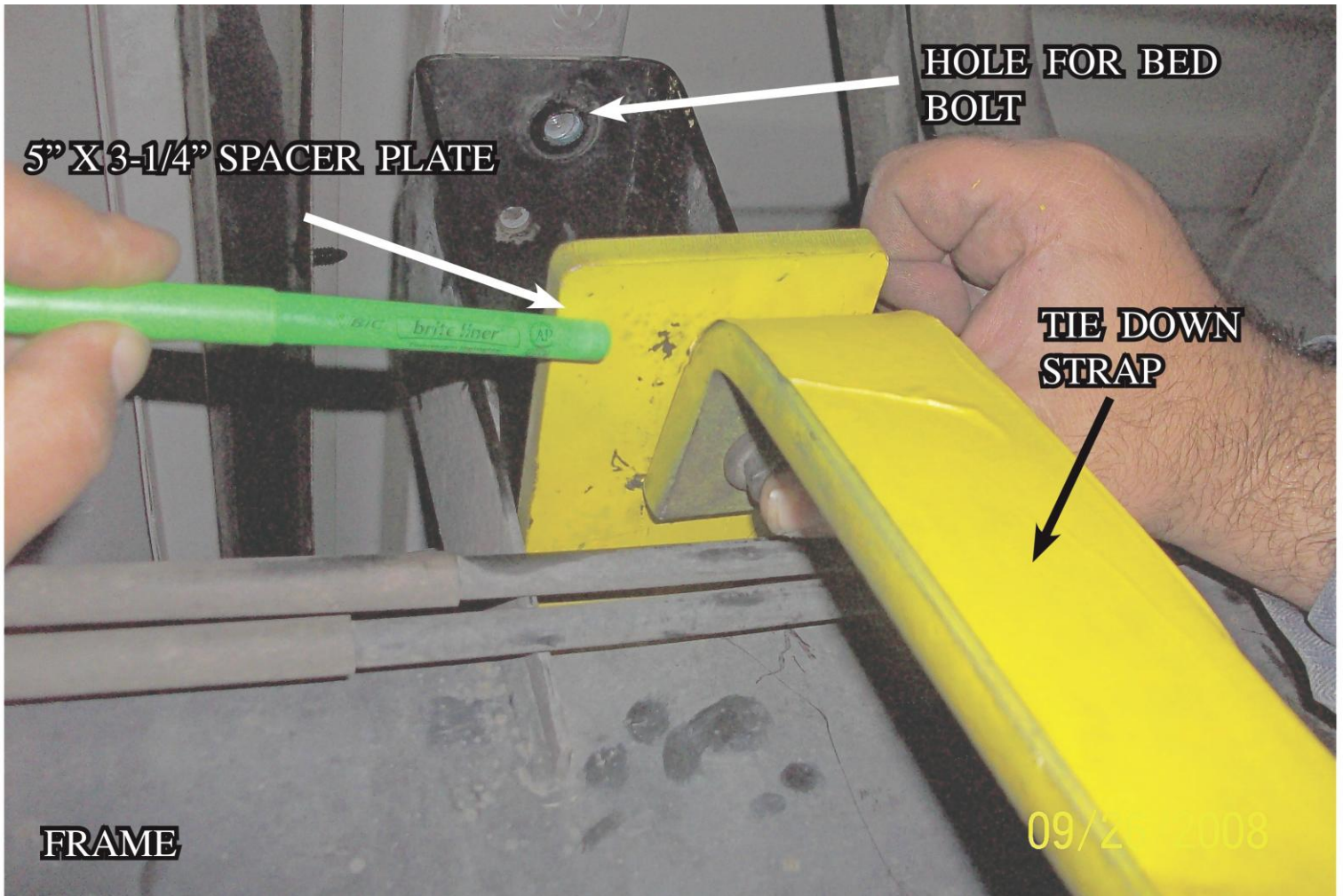
Photo 2.1



Step 3-

Find the driver's side **Aluminum tie down receiver**. Hold the tie down in place against the vehicle bed cross member and align with the factory hole. Locate a **5" (12.7 cm) X 3-1/4" (8.25 cm) Spacer Plate**. This will be sandwiched between the tie down strap and the bed cross member. **(Photo 3.1)**

Photo 3.1



Note: *The spacer plate will have a hole that is offset which should face the rear of the vehicle.*

Step 4-

Re-install factory bolt (bolt removed in **Step 2**) through the Aluminum tie down strap and **5" (12.7 cm) X 3-1/4" (8.25 cm) Spacer Plate** hand tighten.

Step 5-

Now hold the tie down receiver bracket against the side of the vehicle frame at the front of the truck box, until the factory hole on the side of the vehicle frame line up with the hole in the rear of the **Aluminum tie down receiver**.

Step 6-

Locate the smaller of the two holes on the side of the truck's frame toward the front of the vehicle. Fish **1/2" X 2" Hex Bolt** with a **1/2" Star Washer** and a **1/2" Flat Washer** followed by another **1/2" Star Washer** through the larger hole in the vehicles frame into the **Aluminum Tie Down Receiver** (See our bolt fishing guide).

NOTE: When fishing bolts in, put the coiled end of the bolt fisher into the larger of the two factory holes and bring it out of the specified hole. Put the fastener on to the fisher and slowly and gently remove the fisher, pulling the fastener through the desired hole.

Step 7-

Locate the hole on the **Aluminum Tie Down Receiver** toward the rear of the vehicle. Place the **1/2" X 2" Hex Bolt** with a **1/2" Star Washer** followed by a **1"(2.54 cm) X 3" (7.6 cm) Plate Washer** through the larger hole in the vehicle frame. Now pull assembly out of the same hole you placed it into using the **1/2" Bolt Fisher**. Bring the bolt through into the **Aluminum Tie Down Receiver**. (Photo 7.1)

Photo 7.1



Step 8-

Tighten the **Aluminum Tie Down Receiver** with the factory bed bolt **80 ft-lbs** (*108 Nm*). to bed cross member.

Step 9-

Now place two **1/2" Flat Washers**, a **1/2" Lock Washer**, and a **1/2" Nut** onto both front and rear receiver bolts and firmly tighten the receiver to the vehicle frame. This will be tightened to **80 ft-lbs** (*108 Nm*).

Step 10-

Find one insert and **Tie Down Lock** and put the **tie down insert** into the receiver using the hole in the insert. Install **Tie Down Lock**.

Step 11-

Double-check that all bolts are tight and that there is 1" of clearance on the insert and truck box lip.

Step 12-

Repeat all steps on driver's side.

Completed Install



TD FINISHING KIT: Generic Frame Mounted Tie Down picture is used for illustration purposes. The Frame Mounted Tie down design may vary.

| | |
|---|-------------------|
| 2 | Foam Backing Plug |
| 2 | Receiver Cap |

Step 1-

Insert one **Foam Backing Plug** into the back of the **Aluminum Tie Down Receiver** opening. If the back of the Aluminum Tie Down Receiver is inaccessible, insert the **Foam Backing Plug** in the front of the Aluminum Tie Down Receiver and press it back with the Tie Down Insert. See Photo 1.1

Photo 1.1

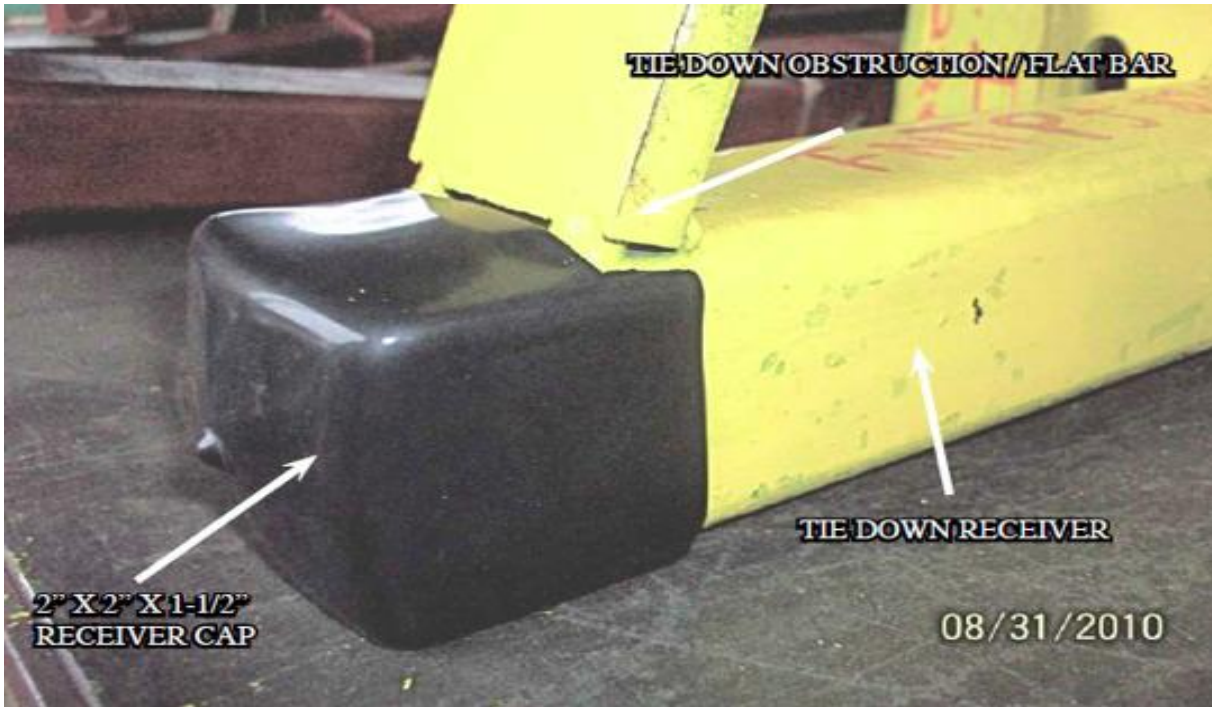


Step 2-

Insert one **Receiver Cap** over the end of the **Aluminum Tie Down Receiver**. See **Photo 2.1** (if the **Receiver Cap** does not fit down the receiver, you will need to notch it out using a box knife or similar) See **Photo 2.2**



Photo 2.2



Step 3-

Repeat on the other Aluminum Tie Down Receiver.

INSTRUCTIONS FOR MAINTENANCE OF POLISHED STAINLESS STEEL PRODUCTS



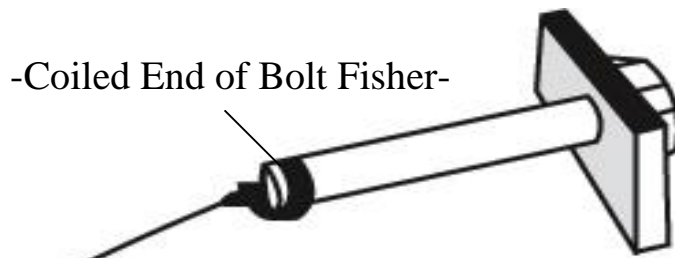
Torklift utilizes quality grade 304 stainless steel in this product.

304 stainless steel is well known for its anti corrosive properties, however in some environments such as coastal regions or when in contact with some road chemicals, corrosion may occur.

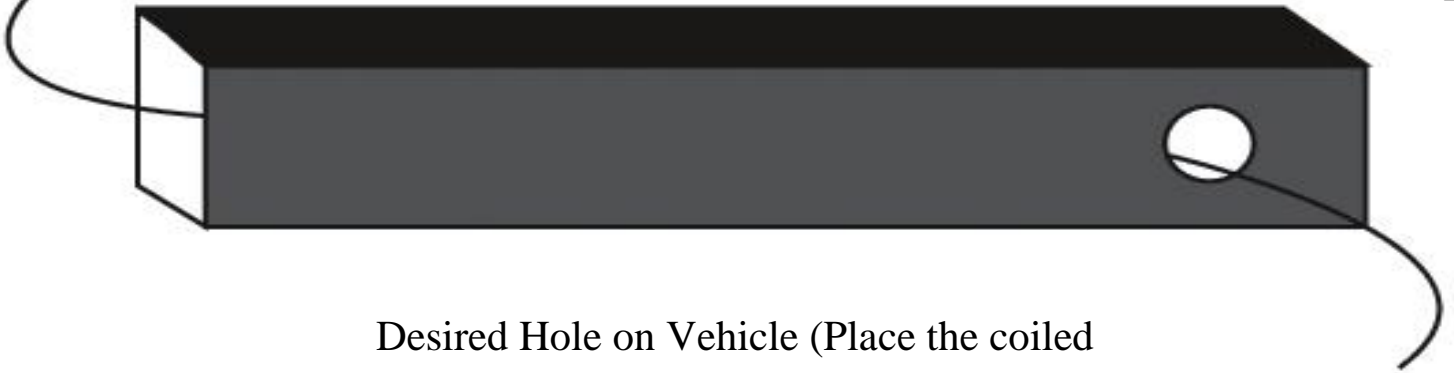
We recommend occasional polishing of our product to maintain its attractive finish. Use an approved stainless steel cleaning/polishing product, which can be purchased from any automotive supplier.

TORKLIFT'S BOLT FISHING GUIDE

Your guide to understanding the installation of our frame mounted tie downs.

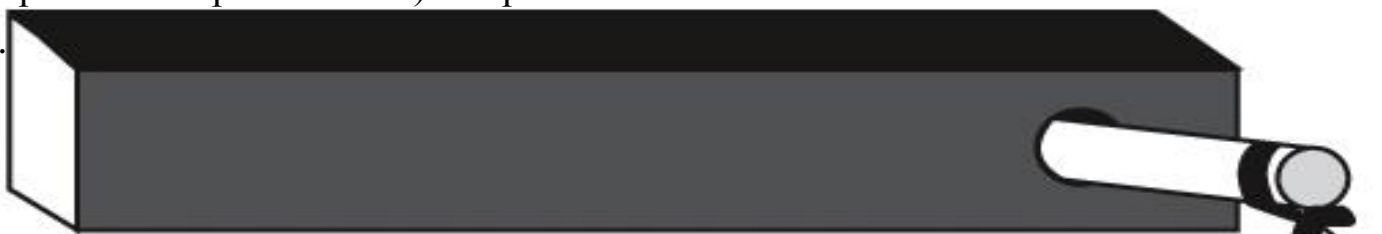


Note: The hardware may vary as to what is being fished along with the bolt. In this instance a 1" X 2" plate washer is being fished along with the hex bolt. Different applications may require fishing through various star washers and flat washers for example.



Desired Hole on Vehicle (Place the coiled end of the bolt fisher through this hole).

This side of the Bolt Fisher should come out of a hole where the required hardware (for example 1" X 2" plate washer) can pass through.



This bottom example shows the bolt when it's completely fished through the vehicle. You may find it easier to keep the bolt fisher attached until you get the tie down receiver in place so that the bolt doesn't fall into the vehicle frame.

WARNING: PULLING TOO HARD ON THE BOLT FISHER CAN RESULT IN LOST FASTENERS, OR BROKEN BOLT FISHER.

TIEDOWN INSERT INSTALLATION INSTRUCTIONS

On one end of each of your tie down inserts is a triangular plate referred to by Torklift as a bullet plate. Your tie down inserts should be installed with the shorter side of the bullet plate facing away from each other, i.e.. The shorter side of the front insert should point to the front of the truck and the shorter side of the rear insert should point towards the rear of the truck.

Once installed, attach the TorkLift directional stickers to the face of the bullet plate on the insert as a reminder.

DRIVERS SIDE FRONT



DRIVERS SIDE REAR



IMPORTANT NOTE: *Your tie down inserts are designed to have clearance inside of the receiver. This is to account for road debris, as well as aid in installation and removal. Some rattle may be expected if the inserts are left installed while not under load from the camper.*

RECOMMENDED TRUCK CAMPER

INSTALLATION INSTRUCTIONS

When securing any heavy load (especially a camper) in your truck bed, your front tie down points should pull the load forward as much as possible. Some camper anchor points may differ with different manufacturers, as well as the camper jack mounting locations. Your Torklift tie down inserts has offset triangular brackets to increase the angle of pull. These are designed to be used in the front facing forward, and the rear facing rearward but can be used in either front or rear. These recommendations are to be considered and followed as a basic rule of thumb. Obviously there will be some applications where this may not be possible. At a minimum, if opposite pull of both front and rear tie downs cannot be achieved for whatever reason, you should have at least a forward pull at the front or rear location.

If your camper does not come with Rubber Bumpers on the front lower portion of the camper, installing Rubber Bumpers (Torklift has Rubber Bumpers available Part A7001) or using a block of wood such as a 2 x 4 in the bed, will prevent the camper from damaging the front bulk head of the truck bed.

Minor movement (or settling) can occur in some incidental harsh driving conditions (on or off road). A rubber bed mat is not a requirement to maintain the lifetime warranty on a Torklift system, but a strong recommendation simply as a safety precaution to protect the truck bed, the bottom of the camper and to give the camper additional support.

TORKLIFT DOES NOT RECOMMEND: Installing your truck camper in your truck on top of a drop in plastic bed liner!!! The drop in plastic bed liners can slide on top of the truck bed surface, and the camper can slide on top of the slick surface of the bed liner. The liner can also act as a spring causing a trampoline effect increasing vertical truck camper movement, independent of the vehicle, possibly resulting in truck bed, and camper damage!

INSTRUCTIONS FOR FINISH MAINTENANCE

OF TORKLIFT PRODUCTS

POWDER COATED STEEL:

To keep your Torklift products looking good follow these guidelines. All steel powder coated Torklift products are sandblasted for maximum adhesion and use a high quality industrial urethane based powder coat. Due to the extreme, harsh, undercar environment that your Torklift products live in, (consistently sprayed with corrosive road chemicals such as salt, and road debris), Torklift does not warranty the powder coated finish.

To minimize corrosion from these factors on powder coated steel products, Torklift recommends regularly cleaning and inspecting the powder-coated surface and touching up any affected areas with enamel or urethane based aerosol paint product. If there are any areas of surface rust, there are also aerosol spray rust converters available on the market that can be used as a preparation to touch-up paint application. These finish maintenance products are available at any automotive parts supplier.

POLISHED STAINLESS STEEL:

Torklift utilizes quality grade 304 stainless steel in our stainless steel polished products. 304 stainless steel is well known for its anti-corrosive properties. However, in some environments such as coastal regions or when coming in contact with some road chemicals, corrosion may occur.

For a quick clean simply use WD40 and a cloth rag. We also recommend occasional polishing of our polished stainless products to maintain their attractive finish. Use an approved stainless steel chrome or aluminum mag wheel polish cleaning product, which can be purchased from any automotive parts supplier.

Torklift International Limited Lifetime Warranty Information

322 Railroad Ave North, Kent, WA 98032

Torklift will require proof of purchase to register, with pictures of any defective product before issuing a replacement. Torklift will not register any product without proof of purchase, which can be faxed, scanned, emailed, or mailed to the information provided below. Torklift warrants its hitches, custom hitch receivers, frame mounted tie downs, turnbuckles, and accessories (excluding wire harnesses which carry a 90 day warranty) from date of purchase against defects in material and workmanship under normal use and service for the ownership life of the original consumer purchaser. ALL COMMERCIAL APPLICATIONS ARE WARRANTED FOR A PERIOD OF 90 DAYS FROM THE DATE OF INSTALLATION/SERVICE. Torklift will replace FREE OF CHARGE any part, which proves defective in material or workmanship when presented to Torklift, TRANSPORTATION CHARGES PREPAID by purchaser, at the address above. THIS WARRANTY IS LIMITED TO DEFECTIVE PARTS REPLACEMENT ONLY. LABOR CHARGES AND/OR DAMAGE INCURRED IN INSTALLATION OR REPLACEMENT, AS WELL AS INCIDENTAL AND CONSEQUENTIAL DAMAGES CONNECTED THEREWITH ARE EXCLUDED. This warranty does not include the finish or paint on our products. Rusting, cracking or peeling of the finish is also excluded. Some states do not allow the exclusion or limitation of incidental or consequential damages, so the above limitation or exclusion may not apply to you. Any damage to Torklift products as a result of misuse, abuse, neglect, accident, improper installation or any use violation of instructions furnished by Torklift or WHEN USED IN ANY COMMERCIAL APPLICATION WILL VOID THE WARRANTY. This warranty gives you specific legal rights, and you may also have rights, which vary from state to state. With warranty service, you may be able to go to a small claims court, a state court or a federal district court.



OVER 35 YEARS OF INNOVATION, QUALITY, SAFETY.

322 Railroad Ave North, Kent, WA 98032

Phone (800) 246-8132 Fax (253) 854-8003

or visit our website: www.TorkLift.com

Dear Valued Customer,

Thank you for making TorkLift your choice for truck, camper packages and accessories for your vehicle. By choosing TorkLift products, you have chosen a company that has been serving the RV industry for nearly 40 years and whose name has become synonymous with strength, quality and advanced design and installation.

Please take a few moments of your time to complete the Product Registration Warranty Card on the next page. When registering your newly purchased TorkLift products, you can be assured that your contact information is secure and that you and your product are getting the attention and respect that you deserve.

Thank you again for choosing TorkLift quality products.

**Register for your lifetime warranty and receive a free Torklift
International gift.**

To Fax: Send copies of the questionnaire, warranty card and receipt to
253-854-8003

To E-mail: Send copies of the questionnaire, warranty card and receipt to
warranty@torklift.com

To Mail: Send to Torklift International **322 Railroad Ave North, Kent, WA 98032**



OVER 35 YEARS OF INNOVATION, QUALITY, SAFETY.

OFFICIAL WARRANTY REGISTRATION CARD

PLEASE FILL OUT THIS FORM COMPLETELY AND RETURN TO TORKLIFT WITHIN 30 DAYS OF PURCHASE ACCOMPANIED BY A COPY OF YOUR ORIGINAL RECEIPT

TODAY'S DATE: _____

1. PART(S) PURCHASED

PART#: _____ PART#: _____
PART#: _____ PART#: _____

2. PURCHASER INFORMATION

NAME: _____

ADDRESS: _____

CITY: _____ STATE: _____ ZIP / POSTAL CODE: _____

PHONE: (____) _____ - _____ EMAIL: _____

3. TRUCK INFORMATION

YEAR: _____ MAKE: _____

MODEL: _____ BED LENGTH: _____

4. CAMPER INFORMATION

YEAR: _____ MAKE: _____ MODEL: _____

5. DEALER INFORMATION

PURCHASED FROM: _____

ADDRESS: _____

CITY: _____ STATE: _____ ZIP / POSTAL: _____

INSTALLED BY: OWNER ABOVE DEALER ANOTHER DEALER

IF ANOTHER DEALER, WHO: _____