



TORKLIFT

I N T E R N A T I O N A L

OVER 35 YEARS OF INNOVATION, QUALITY, SAFETY.



TRUE FRAME MOUNTED CAMPER TIE DOWNS

IMPORTANT OWNER-OPERATOR INSTALLATION INSTRUCTIONS

C2205A



Rev 6 By DSK 11/17/2015

TECH SUPPORT (800) 246-8132

AFTER INSTALL, PLEASE GIVE

THIS BOOKLET TO YOUR CUSTOMER

Warnings

Truck Bed and Camper Protection

Torklift **does not** recommend installing your camper on top of a plastic bed liner (or other compressible material such as foam). These materials can act as a spring, causing increased vertical truck camper movement independent of the vehicle. Plastic bed liners can slide on the truck bed surface, and the truck camper can slide on top of the bed liner. Using a plastic bed liner or similar compressible material will void your warranty and may additionally cause truck bed and/or camper damage.

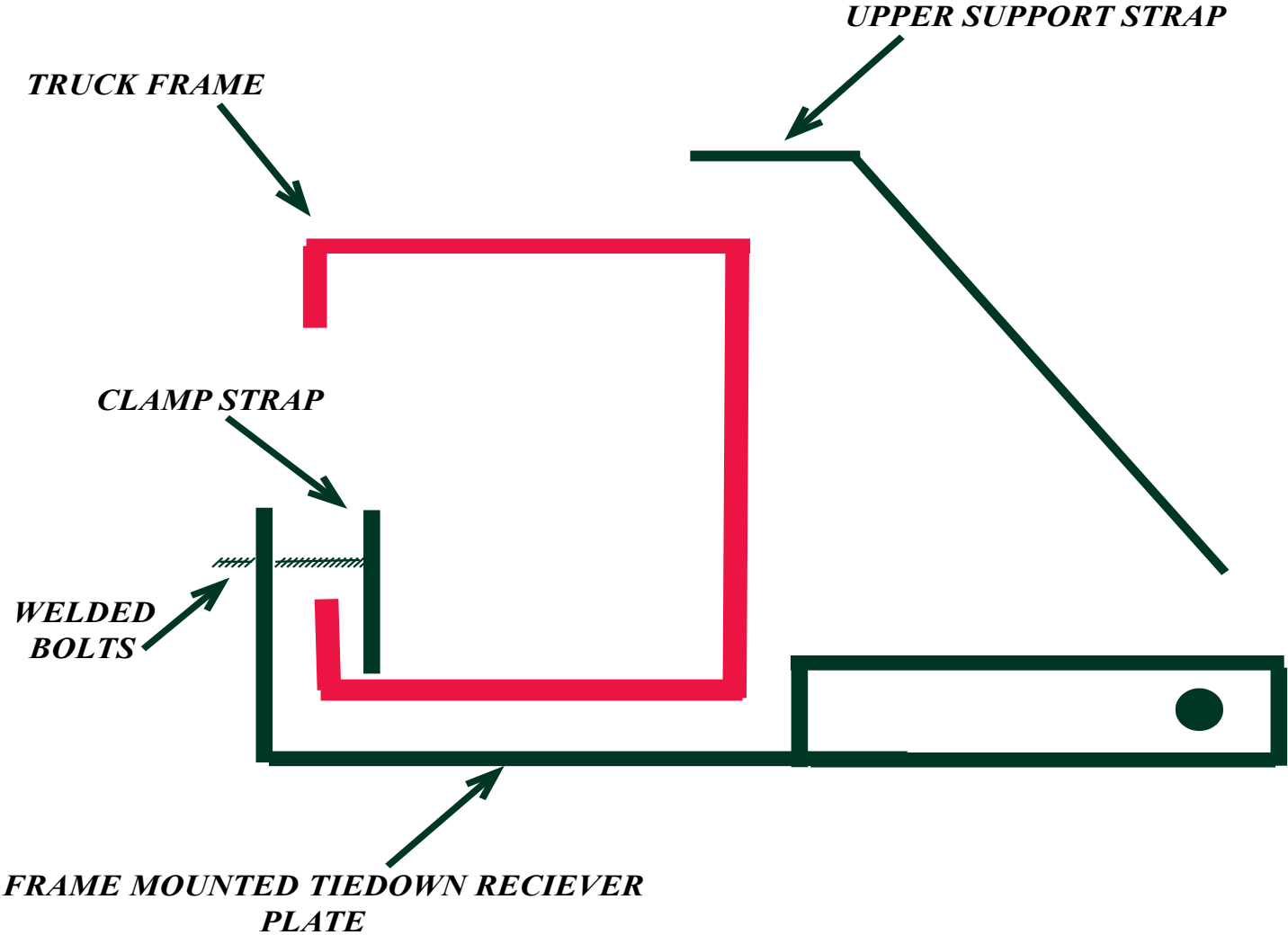
Minor movement or settling can occur in some incidental harsh driving conditions (on or off-road). A rubber bed mat is recommended to protect the truck bed and camper, but is not a requirement to maintain the Torklift legendary lifetime warranty.

Suspension

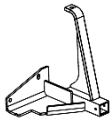







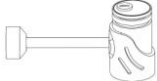
To significantly reduce body roll, sag and sway Torklift strongly recommends the StableLoad. Torklift International StableLoads improve safety, handling, and to help level your truck. More information can be found at (www.Torklift.com/stableload).

If your truck is additionally equipped with suspension air bags Torklift cautions against over pressurization as this may lead to unsafe vehicle handling characteristics. We have found that airbags used in conjunction with StableLoads have allowed operators to lower air bag pressure by 50% or more. Only pressurize suspension air bags enough to level the truck.

INSTALLATION DIAGRAM



C2205A PARTS INVENTORY

| | | |
|---|---------------------------------------|----------|
|  | Talon Tie Down Receiver | 2 |
|  | Straight Talon Tie-Down Insert | 2 |
|  | 1/2" USS Flat Washer | 4 |
|  | 1/2" Lock Washer | 2 |
|  | 1/2"-13 Serrated Flange Nut | 4 |
|  | Clamp Strap | 2 |
|  | M12"-1.75 x 50mm Hex bolt | 2 |
|  | Tie Down Capping Kit | 1 |
|  | Tie Down Lock | 2 |

NOTE: YOU MAY NEED TO SPRAY WD-40 OR PENETRATING OIL ONTO THE FACTORY BOLTS TO AID IN THEIR REMOVAL.

INSTALLATION NOTES

There is enough room to install the C2205 Tie Down between the frame and the gas tank, but if the tank is closer than normal, you may choose to loosen the straps for the tank and move it away from the frame while performing the installation.

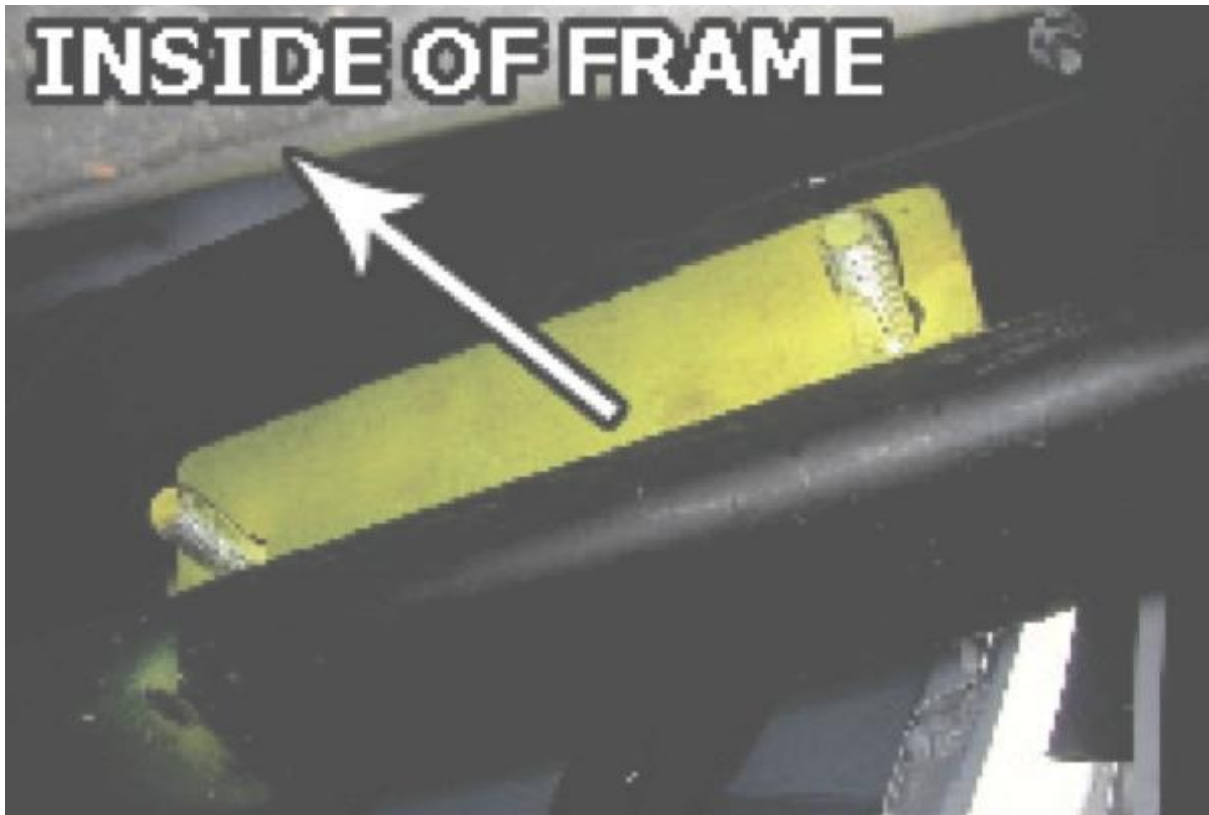
Step 1-

Starting on the driver side of the vehicle, locate the forward most factory bed support and remove the factory M12 hex bolt. This bolt may be discarded as a longer replacement bolt is supplied in the bolt kit. Please reference Photo 1.1 below.

Photo 1.1



Step 2-Locate a **clamp strap** with two welded on **1/2"-13 x 1.5" Hex Bolts**, and place the clamp strap into the inside of the vehicle c-frame. The two welded on bolts are facing toward the center of the vehicle. The **clamp strap** is directional, and the provided hand hold tab must face towards the front of the vehicle. Reference the installation diagram on page 2, as well as Photo 2.1 below.



Step 3-

Note that the parking brake must be released to perform the tie down receiver installation. Be sure the vehicle is in park (or first gear if equipped with manual transmission) before releasing the parking brake! It is also strongly recommended to chock one or more of the vehicle wheels to prevent movement.

Begin to lift the **tie down receiver** into place by first angling the gusseted top strap above the frame and through the gap between the cab and truck bed. With the top strap to the left of the bed mount, fit the lower part of the **tie down receiver** between the now slackened parking brake cable and the frame. The end result will look like photos 3.1 and 3.2 below.

Photo 3.1

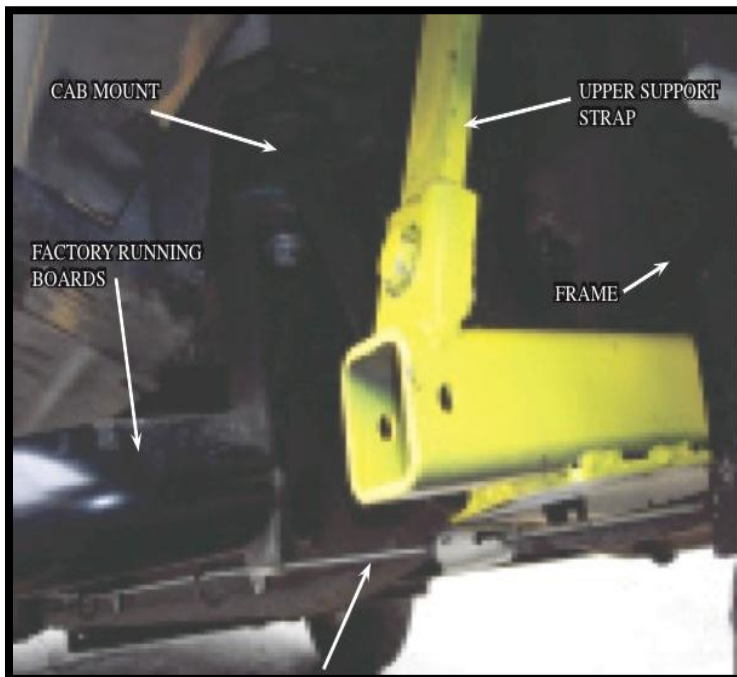
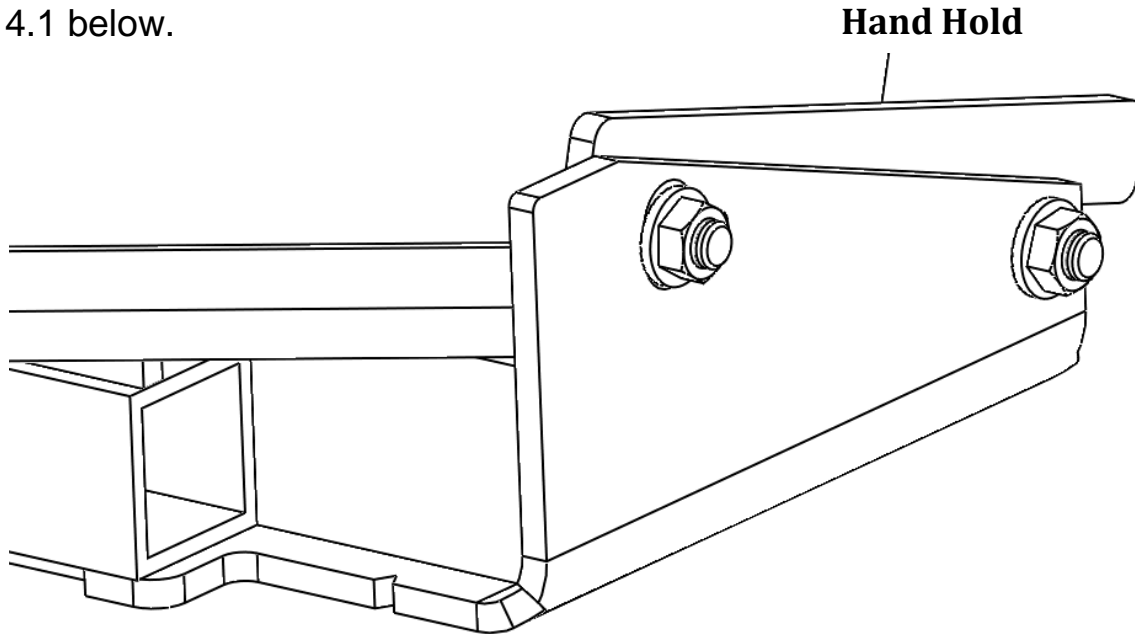


Photo 3.2



Step 4-

Now, lift the rear of the **tie down receiver** over the two welded on bolts of the clamp strap. It is easiest to first align the bolt nearest to the hand hold on the **clamp strap**. Then, the hand hold and first bolt can be used to pivot the **clamp strap** and align the second bolt. Notice that the vehicle frame is sandwiched between the **clamp strap** on the inside of the frame, and the **tie down receiver** on the outside of the frame. Install a **1/2" serrated flanged lock nut** onto each of the two protruding bolts and leave hand tight at this time. Reference Figure 4.1 below.

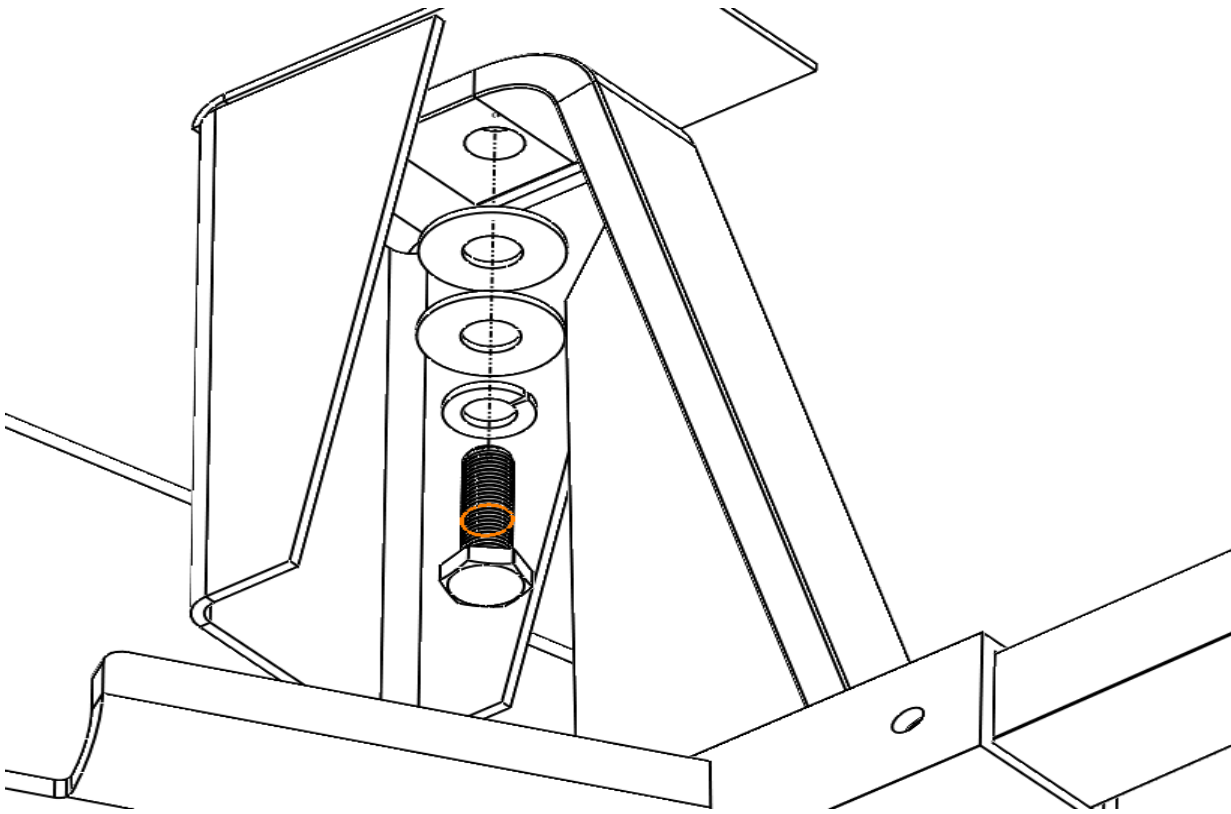


NOTE:

THE CLAMP STRAP BOLTS WILL BE SLIGHTLY ANGLED AND THE FLANGE NUTS WILL NOT SIT FLAT, THIS IS NORMAL.

Step 5-

Position the gusseted top strap up and into the factory bed mount and align the holes. Place one **1/2" lock washer**, followed by two **1/2" flat washers** onto the supplied **M12-1.75x50mm hex bolt**. Install this bolt assembly through the hole in the top strap and into the factory bed mount. Reference figure 5.1 on the next page, and leave hardware hand tight at this time.



Step 6-

Lift the **tie down receiver** until it touches the bottom of the frame and tighten the two **1/2" serrated flanged lock nuts** on the back of the frame to 75 ft-lbs (101 Nm). Next, tighten the **M12-1.75x50mm hex bolt** in the bed support tower to 75 ft-lbs (101 Nm). After all bolts have been tightened, check to be certain that the tie down receiver is touching the bottom of the frame.

Step 7-


Install the driver side tie down insert into the tie down receiver, and secure with one **Tie Down Lock**. Make sure that the triangle plate located on the end of the insert is pointing towards the front of the truck, as this is designed to increase the angle of the chain or turnbuckle and better secure your camper against longitudinal movement. Either hole in the tie down insert can be used as long as there is enough clearance between the turnbuckle and truck body.

Note: You should have at least 1" clearance between the insert and the bottom lip of the bed and/or after market accessory.

Step 8-

Repeat steps 1-7 for the passenger side tie down installation.

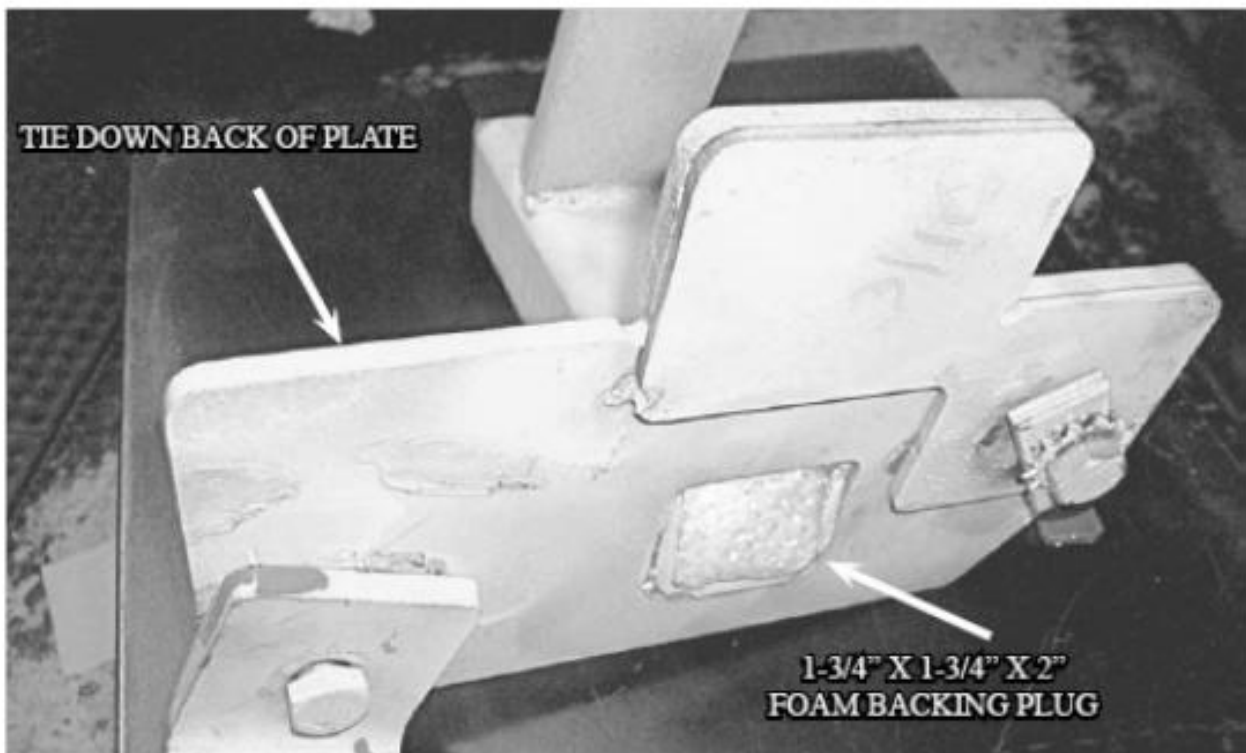
TD Finishing Kit

| | | |
|---|---|---|
| | 1-3/4" x 1-3/4" X 2" Foam Backing Plug | 2 |
|  | 2" x 2" x 1-1/2" Receiver Cap | 2 |

Step 1

Insert one **1-3/4" x 1-3/4" x 2" Foam Backing Plug** into the back of the **Tie Down Receiver** opening. If the back of the receiver is inaccessible, insert the Foam Backing Plug in the front of the **Tie Down Receiver** and press it back with the **Tie Down Insert** see **Photo 1.1**

Photo 1.1



Step 2

Insert one **2" x 2" x 1-1/2" Receiver Cap** over the end of the

Aluminum Tie Down Receiver. See **Photo 2.1** (if the 2" x 2" x 1-1/2"

Receiver Cap does not fit over the receiver, you will need to notch it

out using a box knife or similar) See **Photo 2.2**.

Photo 2.1



Photo 2.2



TIEDOWN INSERT INSTALLATION INSTRUCTIONS

On one end of each of your tie down inserts is a triangular plate referred to by Torklift as a bullet plate. Your tie down inserts should be installed with the shorter side of the bullet plate facing away from each other, i.e.. The shorter side of the front insert should point to the front of the truck and the shorter side of the rear insert should point towards the rear of the truck. Once installed, attach the TorkLift directional stickers to the face of the bullet plate on the insert as a reminder.

DRIVERS SIDE FRONT



DRIVERS SIDE REAR



IMPORTANT NOTE: *Your tie down inserts are designed to have clearance inside of the receiver. This is to account for road debris, as well as aid in installation and removal. Some rattle may be expected if the inserts are left installed while not under load from the camper.*



Frame Mounted Tie Downs

Leading the camper tie down industry in strength, quality, advanced design and installation. TorkLift TRUE frame mounted tie downs are far superior to all tie down systems available.

The TorkLift system is unique in its design and is patented. Four independent tie down points (with no belly or crossbar) working much like your receiver type trailer hitch as the inserts are removable allowing the system to be virtually undetectable when not in use. They are designed for each make and model to fit tight to the frame so as not to compromise ground clearance. Torklift tie downs are not universal 'one size fits all' therefore all the problems with correct fit for each particular application have been eliminated.

VISIT WWW.TORKLIFT.COM FOR MORE INFORMATION
Original SuperHitch & SuperHitch Magnum



High strength extended hitch system engineered for safely towing all types of trailers behind your truck and camper. With a max towing capacity of 14,000 lbs. with an extension* , (17,000 lbs. to 20,000 lbs. without*) the Original SuperHitch and Superhitch Magnum are rated the strongest in the industry.

CONTACT YOUR LOCAL DEALER FOR MORE DETAILS

Torklift International Limited Lifetime Warranty Information

322 Railroad Ave North, Kent, WA 98032

Torklift will require proof of purchase to register, with pictures of any defective product before issuing a replacement. Torklift will not register any product without proof of purchase, which can be faxed, scanned, emailed, or mailed to the information provided below. Torklift warrants it's hitches, custom hitch receivers, frame mounted tie downs, turnbuckles, and accessories (excluding wire harnesses which carry a 90 day warranty) from date of purchase against defects in material and workmanship under normal use and service for the ownership life of the original consumer purchaser. **ALL COMMERCIAL APPLICATIONS ARE WARRANTED FOR A PERIOD OF 90 DAYS FROM THE DATE OF INSTALLATION/SERVICE.** Torklift will replace **FREE OF CHARGE** any part which proves defective in material or workmanship when presented to Torklift, **TRANSPORTATION CHARGES PREPAID** by purchaser, at the address above. **THIS WARRANTY IS LIMITED TO DEFECTIVE PARTS REPLACEMENT ONLY. LABOR CHARGES AND/OR DAMAGE INCURRED IN INSTALLATION OR REPLACEMENT, AS WELL AS INCIDENTAL AND CONSEQUENTIAL DAMAGES CONNECTED THEREWITH ARE EXCLUDED.** This warranty does not include the finish or paint on our products. Rusting, cracking or peeling of the finish is also excluded. Some states do not allow the exclusion or limitation of incidental or consequential damages, so the above limitation or exclusion may not apply to you. Any damage to Torklift products as a result of misuse, abuse, neglect, accident, improper installation or any use violative of instructions furnished by Torklift or **WHEN USED IN ANY COMMERCIAL APPLICATION WILL VOID THE WARRANTY.** This warranty gives you specific legal rights, and you may also have rights which vary from state to state. With warranty service, you may be able to go to a small claims court, a state court or a federal district court.

322 Railroad Ave North, Kent, WA 98032

Phone (800) 246-8132 Fax (253) 854-8003

Or visit our website: www.TorkLift.com

Dear Valued Customer,

Thank you for making TorkLift your choice for truck, camper packages and accessories for your vehicle. By choosing TorkLift products, you have chosen a company that has been serving the RV industry for nearly 40 years and whose name has become synonymous with strength, quality and advanced design and installation.

Please take a few moments of your time to complete the Product Registration Warranty Card on the next page. When registering your newly purchased TorkLift products, you can be assured that your contact information is secure and that you and your product are getting the attention and respect that you deserve.

Thank you again for choosing TorkLift quality products.

**Register for your lifetime warranty and receive a free Torklift
International gift.**

To Fax: Send copies of the questionnaire, warranty card and receipt to
253-854-8003

To E-mail: Send copies of the questionnaire, warranty card and receipt to
warranty@torklift.com

To Mail: Send to Torklift International
322 Railroad Ave North, Kent, WA 98032



OVER 35 YEARS OF INNOVATION, QUALITY, SAFETY.

OFFICIAL WARRANTY REGISTRATION CARD

PLEASE FILL OUT THIS FORM COMPLETELY AND RETURN TO TORKLIFT WITHIN

30 DAYS OF PURCHASE ACCOMPANIED BY A COPY OF YOUR ORIGINAL RECEIPT

1. PART(S) PURCHASED

TODAY'S DATE: _____

PART #: _____ PART #: _____
PART #: _____ PART #: _____
PART #: _____ PART #: _____

2. PURCHASER INFORMATION

NAME: _____

ADDRESS: _____

CITY: _____ STATE: _____ ZIP / POSTAL CODE: _____

PHONE: () - _____ EMAIL: _____

3. TRUCK INFORMATION

YEAR: _____ MAKE: _____

MODEL: _____ BED LENGTH: _____

4. CAMPER INFORMATION

YEAR: _____ MAKE: _____ MODEL: _____

5. DEALER INFORMATION

PURCHASED FROM: _____

ADDRESS: _____

CITY: _____ STATE: _____ ZIP / POSTAL: _____

INSTALLED BY: OWNER ABOVE DEALER ANOTHER DEALER

IF ANOTHER DEALER, WHO: _____