



TORKLIFT

I N T E R N A T I O N A L

OVER 35 YEARS OF INNOVATION, QUALITY, SAFETY.



TRUE FRAME MOUNTED CAMPER TIE DOWNS

IMPORTANT OWNER-OPERATOR INSTALLATION INSTRUCTIONS

C2205



REVISED vers7 BY JL 08/5/15

TECH SUPPORT (800) 246-8132

**AFTER INSTALL, PLEASE GIVE
THIS BOOKLET TO YOUR CUSTOMER**

Warnings

Truck Bed and Camper Protection

Torklift **does not** recommend installing your camper on top of a plastic bed liner (or other compressible material such as foam). These materials can act as a spring, causing increased vertical truck camper movement independent of the vehicle. Plastic bed liners can slide on the truck bed surface, and the truck camper can slide on top of the bed liner. Using a plastic bed liner or similar compressible material will void your warranty and may additionally cause truck bed and/or camper damage.

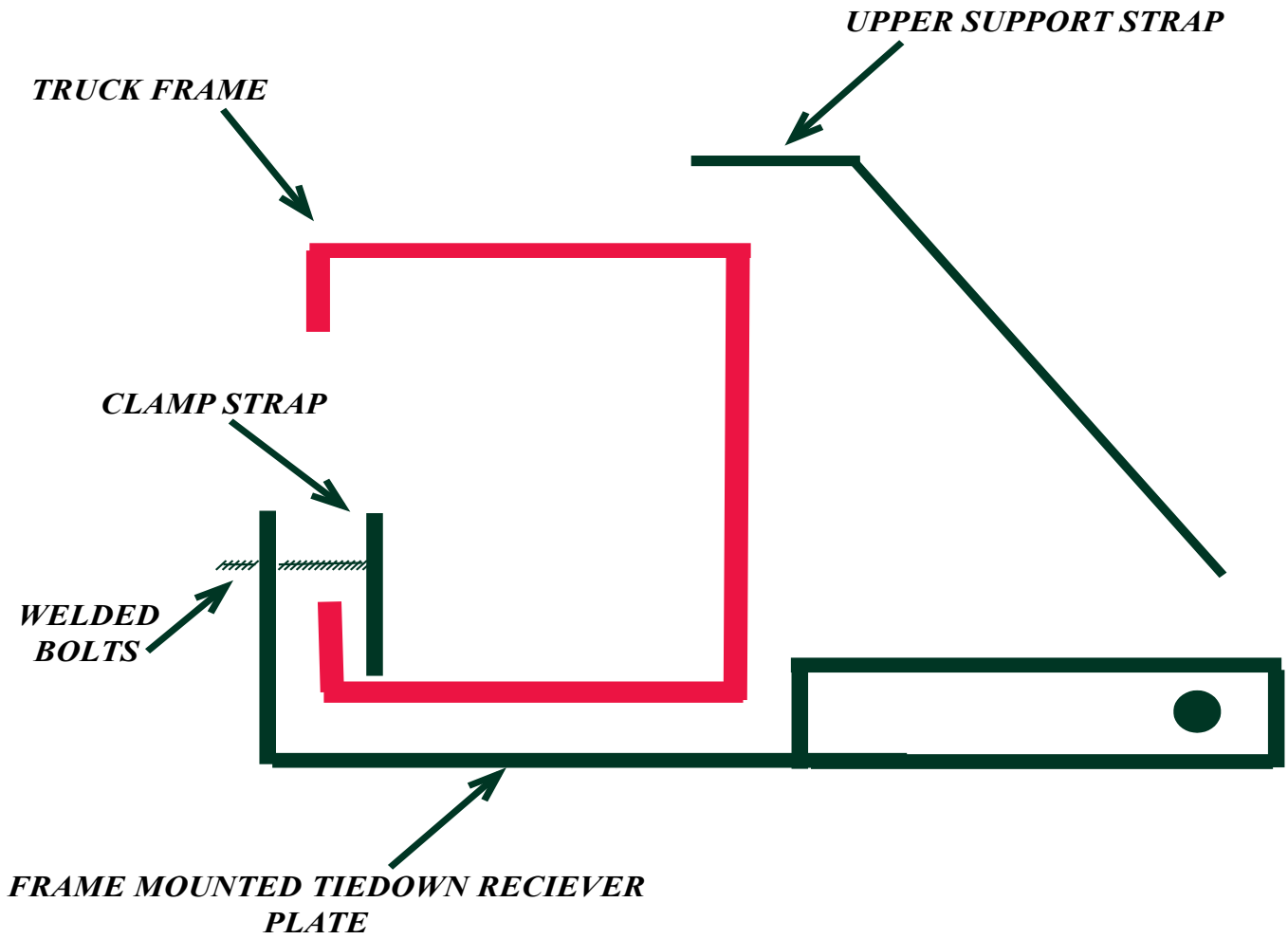
Minor movement or settling can occur in some incidental harsh driving conditions (on or off-road). A rubber bed mat is recommended to protect the truck bed and camper, but is not a requirement to maintain the Torklift legendary lifetime warranty.

Suspension

To significantly reduce body roll, sag and sway Torklift strongly recommends the StableLoad. Torklift International StableLoads improve safety, handling, and to help level your truck. More information can be found at (www.Torklift.com/stableload).

If your truck is additionally equipped with suspension air bags Torklift cautions against over pressurization as this may lead to unsafe vehicle handling characteristics. We have found that airbags used in conjunction with StableLoads have allowed operators to lower air bag pressure by 50% or more. Only pressurize suspension air bags enough to level the truck.

INSTALLATION DIAGRAM



C2205 PARTS INVENTORY

2- TIE-DOWN RECEIVERS	2- STRAIGHT INSERTS
2- 12MM X 1.75 X 50MM HEX BOLT	2- CLAMP STRAPS
4- 1/2" LOCK WASHERS	2- BENT SUPPORT STRAPS
6- 1/2" FLAT WASHERS	2- 1/4" PINS
4- 1/2" FLANGE NUTS	2- 1/2" GRADE 5 NUTS
2- 1/2" X 1-1/2" HEX BOLTS	2- TORKLIFT STICKERS

NOTE: YOU MAY NEED TO SPRAY SOME WD-40 TO THE FACTORY FASTENERS BEFORE BREAKING THEM LOOSE.

INSTALLATION

There is enough room to install the C2205 Tie Down between the frame and the gas tank, but if the tank is closer than normal, you may choose to loosen the straps for the tank and move it away from the frame while performing the installation.

Attention: This No-Drill application does not utilize any factory holes in the vehicle's frame (as there are no factory holes). The tie down receiver will be attached via heavy-duty clamp straps on the inside of the truck frame.

Step 1-

Remove the factory bed bolt from the bed support tower. Locate a bent support strap and align the hole in the bent support strap with the factory hole in the bed support tower. Place a lock washer and 2 flat washers onto the supplied 12mm x 1.75 x 50mm bolt that is supplied in your kit and install hand tight (Photo 1.1). **PROPER FASTENER ASSEMBLY IS (LOCK WASHER ONTO THE BOLT FIRST, THEN 2 FLAT WASHERS)**

Step 2-

Locate a clamp strap with the welded on bolts and place the clamp strap into the inside of the frame (**as seen in Photo C**) the clamp strap is located on the inside of the c-frame and the two welded on bolts are facing toward the center of the vehicle.

NOTE:

THE LONG TAPERED END OF THE CLAMP STRAP SHOULD POINT TOWARD THE FRONT OF THE TRUCK AND SHOULD FACE DOWN.

NOTE:

This is a no-drill application and the threaded bolts will not go through any holes in the frame! If you feel that you need to drill the frame, please call our tech support line as you may be installing wrong or you may have the wrong tie down for your application.

Step 2- Continued

Now, lift the back of the tie down receiver over the two welded on bolts (**as seen in Photo D**) the photo of the tie down receiver is positioned in the inside of the frame (**unlike our other tie down applications, the receiver will not be positioned on the outside of the frame**). Notice that the clamp strap is sandwiched between the inside of the frame and the receiver in **PHOTO D**. Install a flanged lock nut onto each of the bolts and hand tighten at this time.

NOTE:

THE CLAMP STRAP BOLTS WILL BE SLIGHTLY ANGLED AND THE FLANGE NUTS WILL NOT SIT FLAT, THIS IS NORMAL.

Step 3-

Hold tie down receiver in front of the bent support strap so that the hole in the support strap aligns with the hole on the support strap pocket on the tie down receiver. Install the 1/2" x 1-1/2" hex bolt securing with a 1/2" lock washer, 1/2" flat washer and a 1/2" grade 5 nut. (**As seen in Photo B**).

Step 4-

TIGHTENING OF THE BOLTS MUST TORQUED IN THE ORDER THAT IS GIVEN IN THIS STEP. Lift the tie down receiver until it touches the bottom of the frame and tighten the two flanged lock nuts on the back of the frame to 60ft lbs.(81Nm) Next tighten the flanged lock nut that attaches the bent support strap to the tie down receiver to 60ft lbs.(81Nm) Finally, tighten the metric bolt attaching to the bed support tower to 60ft lbs. (81Nm)

Step 5-

After all bolts have been tightened, check to be certain that the tie down receiver is touching the bottom of the frame.

Step 6-

Find one insert and one 1/4" pin; put the insert into the tie down receiver. Install the 1/4" pin. Make sure that the triangle plate located on the end of the insert is pointing towards the front of the truck. This bracket is designed to increase the angle of the chain/turnbuckle.

You should have at least 1” clearance between the insert and the lip of the bed or after market accessory.

ILLUSTRATED DIAGRAMS

PHOTO A



PHOTO B



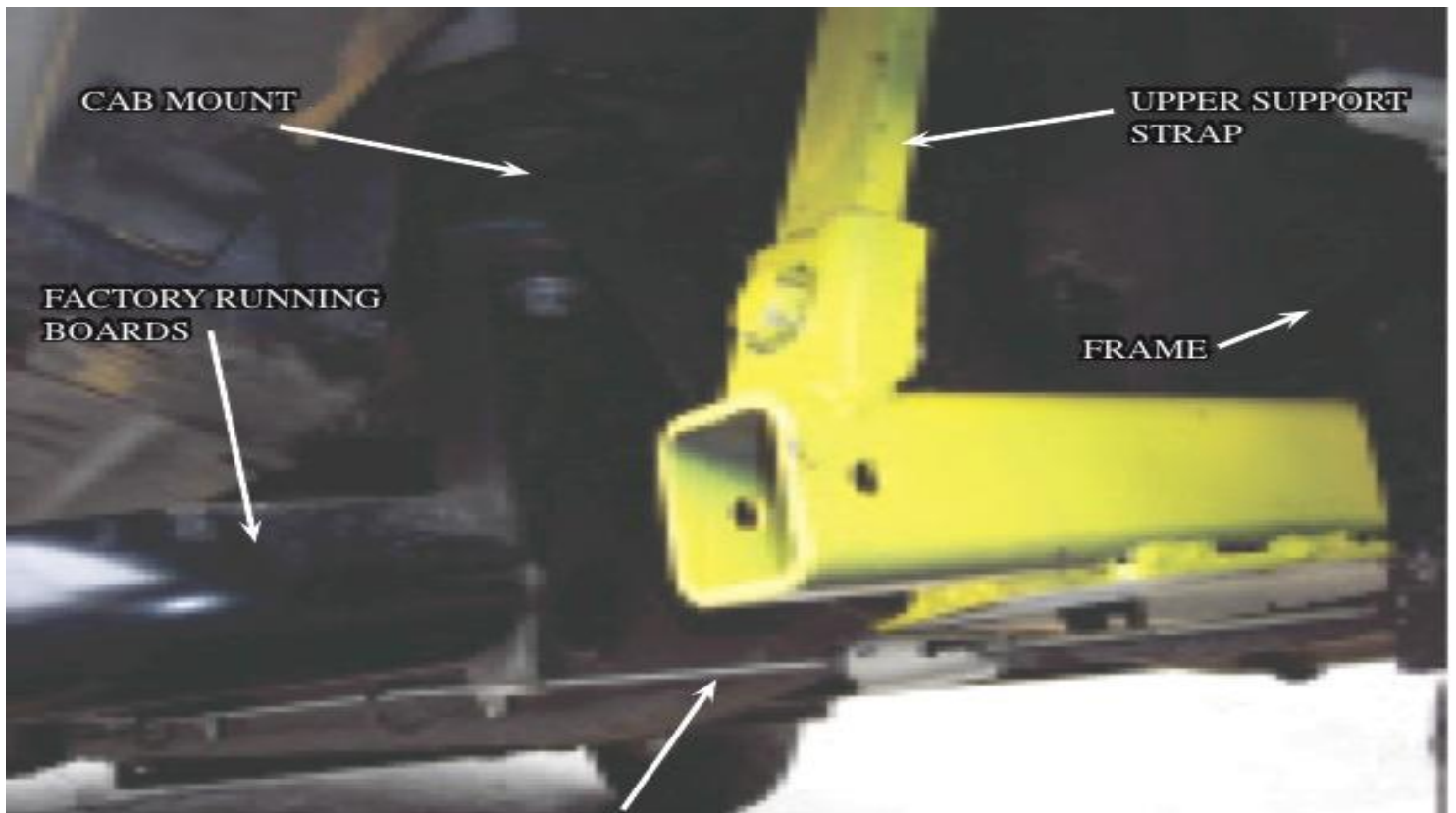
PHOTO C (PASSENGER SIDE)



PHOTO D (DRIVER SIDE)



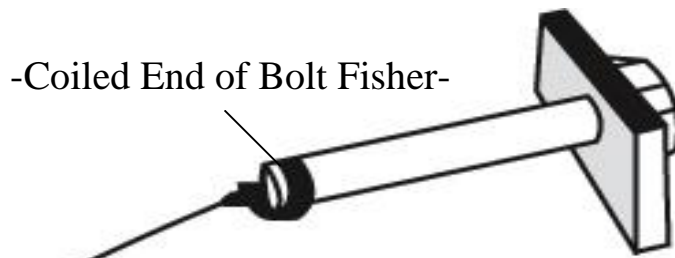
PHOTO E



E-BRAKE CABLE RUNS BELOW THE CAMPER TIE DOWN

TORKLIFT'S BOLT FISHING GUIDE

Your guide to understanding the installation of our frame mounted tie downs.



Note: The hardware may vary as to what is being fished along with the bolt. In this instance a 1" X 2" plate washer is being fished along with the hex bolt. Different applications may require fishing through various star washers and flat washers for example.



Desired Hole on Vehicle (Place the coiled end of the bolt fisher through this hole).

This side of the Bolt Fisher should come out of a hole where the required hardware (for example 1" X 2" plate washer) can pass through.



This bottom example shows the bolt when it's completely fished through the vehicle. You may find it easier to keep the bolt fisher attached until you get the tie down receiver in place so that the bolt doesn't fall into the vehicle frame.

WARNING: PULLING TOO HARD ON THE BOLT FISHER CAN RESULT IN LOST FASTENERS, OR BROKEN BOLT FISHER.

TIEDOWN INSERT INSTALLATION INSTRUCTIONS

On one end of each of your tie down inserts is a triangular plate referred to by Torklift as a bullet plate. Your tie down inserts should be installed with the shorter side of the bullet plate facing away from each other, i.e.. The shorter side of the front insert should point to the front of the truck and the shorter side of the rear insert should point towards the rear of the truck.

Once installed, attach the TorkLift directional stickers to the face of the bullet plate on the insert as a reminder.

DRIVERS SIDE FRONT



DRIVERS SIDE REAR



IMPORTANT NOTE: *Your tie down inserts are designed to have clearance inside of the receiver. This is to account for road debris, as well as aid in installation and removal. Some rattle may be expected if the inserts are left installed while not under load from the camper.*

INSTRUCTIONS FOR FINISH MAINTENANCE **OF TORKLIFT PRODUCTS**

POWDER COATED STEEL:

To keep your Torklift products looking good follow these guidelines. All steel powder coated Torklift products are sandblasted for maximum adhesion and use a high quality industrial urethane based powder coat. Due to the extreme, harsh, undercar environment that your Torklift products live in, (consistently sprayed with corrosive road chemicals such as salt, and road debris), Torklift does not warranty the powder coated finish.

To minimize corrosion from these factors on powder coated steel products, Torklift recommends regularly cleaning and inspecting the powder-coated surface and touching up any affected areas with enamel or urethane based aerosol paint product. If there are any areas of surface rust, there are also aerosol spray rust converters available on the market that can be used as a preparation to touch-up paint application. These finish maintenance products are available at any automotive parts supplier.

POLISHED STAINLESS STEEL:

Torklift utilizes quality grade 304 stainless steel in our stainless steel polished products. 304 stainless steel is well known for its anti-corrosive properties.

However, in some environments such as coastal regions or when coming in contact with some road chemicals, corrosion may occur.

For a quick clean simply use WD40 and a cloth rag. We also recommend occasional polishing of our polished stainless products to maintain their attractive finish. Use an approved stainless steel chrome or aluminum mag wheel polish cleaning product, which can be purchased from any automotive parts supplier.

Torklift International Limited Lifetime Warranty Information

322 Railroad Ave North, Kent, WA 98032

Torklift will require proof of purchase to register, with pictures of any defective product before issuing a replacement. Torklift will not register any product without proof of purchase, which can be faxed, scanned, emailed, or mailed to the information provided below. Torklift warrants its hitches, custom hitch receivers, frame mounted tie downs, turnbuckles, and accessories (excluding wire harnesses which carry a 90 day warranty) from date of purchase against defects in material and workmanship under normal use and service for the ownership life of the original consumer purchaser. **ALL COMMERCIAL APPLICATIONS ARE WARRANTED FOR A PERIOD OF 90 DAYS FROM THE DATE OF INSTALLATION/SERVICE.** Torklift will replace **FREE OF CHARGE** any part, which proves defective in material or workmanship when presented to Torklift, **TRANSPORTATION CHARGES PREPAID** by purchaser, at the address above. **THIS WARRANTY IS LIMITED TO DEFECTIVE PARTS REPLACEMENT ONLY. LABOR CHARGES AND/OR DAMAGE INCURRED IN INSTALLATION OR REPLACEMENT, AS WELL AS INCIDENTAL AND CONSEQUENTIAL DAMAGES CONNECTED THEREWITH ARE EXCLUDED.** This warranty does not include the finish or paint on our products. Rusting, cracking or peeling of the finish is also excluded. Some states do not allow the exclusion or limitation of incidental or consequential damages, so the above limitation or exclusion may not apply to you. Any damage to Torklift products as a result of misuse, abuse, neglect, accident, improper installation or any use violation of instructions furnished by Torklift or **WHEN USED IN ANY COMMERCIAL APPLICATION WILL VOID THE WARRANTY.** This warranty gives you specific legal rights, and you may also have rights, which vary from state to state. With warranty service, you may be able to go to a small claims court, a state court or a federal district court.



OVER 35 YEARS OF INNOVATION, QUALITY, SAFETY.

**322 Railroad Ave North, Kent, WA 98032
Phone (800) 246-8132 Fax(253) 854-8003**

or visit our website: www.TorkLift.com

Dear Valued Customer,

Thank you for making TorkLift your choice for truck, camper packages and accessories for your vehicle. By choosing TorkLift products, you have chosen a company that has been serving the RV industry for nearly 40 years and whose name has become synonymous with strength, quality and advanced design and installation.

Please take a few moments of your time to complete the Product Registration Warranty Card on the next page. When registering your newly purchased TorkLift products, you can be assured that your contact information is secure and that you and your product are getting the attention and respect that you deserve.

Thank you again for choosing TorkLift quality products.

**Register for your lifetime warranty and receive a free Torklift
International gift.**

To Fax: Send copies of the questionnaire, warranty card and receipt to
253-854-8003

To E-mail: Send copies of the questionnaire, warranty card and receipt to
warranty@torklift.com

To Mail: Send to Torklift International **322 Railroad Ave North, Kent, WA 98032**

Frame Mounted Tie Downs

Leading the camper tie down industry in strength, quality, advanced design and installation. TorkLift TRUE frame mounted tie downs are far superior to all tie down systems available.

The TorkLift system is unique in its design and is patented. Four independent tie down points (with no belly or crossbar) working much like your receiver type trailer hitch as the inserts are removable allowing the system to be virtually undetectable when not in use.

They are designed for each make and model to fit tight to the frame so as not to compromise ground clearance. TorkLift tie downs are not universal 'one size fits all' therefore all the problems with correct fit for each particular application have been eliminated.

Original SuperHitch & SuperHitch Magnum

High strength extended hitch system engineered for safely towing all types of trailers behind your truck and camper. With a max towing capacity of 14,000 lbs(6350Kg). with an extension*, (17,000 lbs.(7711Kg) to 20,000 lbs.(9071Kg) without*) the Original SuperHitch and SuperHitch Magnum are rated the strongest in the industry.



CONTACT YOUR LOCAL DEALER FOR MORE DETAILS

*Weight capacity varies depending on the SuperHitch and SuperTruss extension setup.



OVER 35 YEARS OF INNOVATION, QUALITY, SAFETY.

OFFICIAL WARRANTY REGISTRATION CARD

PLEASE FILL OUT THIS FORM COMPLETELY AND RETURN TO TORKLIFT WITHIN 30 DAYS OF PURCHASE ACCOMPANIED BY A COPY OF YOUR ORIGINAL RECEIPT

TODAY'S DATE: _____

1. PART(S) PURCHASED

PART#: _____ PART#: _____
PART#: _____ PART#: _____

2. PURCHASER INFORMATION

NAME: _____

ADDRESS: _____

CITY: _____ STATE: _____ ZIP / POSTAL CODE: _____

PHONE: (____) _____ - _____ EMAIL: _____

3. TRUCK INFORMATION

YEAR: _____ MAKE: _____

MODEL: _____ BED LENGTH: _____

4. CAMPER INFORMATION

YEAR: _____ MAKE: _____ MODEL: _____

5. DEALER INFORMATION

PURCHASED FROM: _____

ADDRESS: _____

CITY: _____ STATE: _____ ZIP / POSTAL: _____

INSTALLED BY: OWNER ABOVE DEALER ANOTHER DEALER

IF ANOTHER DEALER, WHO: _____