



TRUE FRAME MOUNTED CAMPER TIE DOWNS

IMPORTANT OWNER-OPERATOR INSTALLATION INSTRUCTIONS

A7200 STABLE LOAD

APPLICATION FITS:

**ALL FORD TRUCKS 85-08 FITTED WITH
FACTORY CONTACT OVERLOADS
DODGE TRUCKS 94-08 FITTED WITH
FACTORY CONTACT OVERLOADS**

**PLEASE GIVE THIS BOOKLET TO YOUR CUSTOMER
AS IT CONTAINS CRITICAL OPERATOR INFORMATION**

**REV MBJ 11/13/07
TECH SUPPORT (800) 246-8132**



NOTE: Adjustment of the airspring pressure, either up or down, is recommended to obtain the best handling and ride quality. Air pressure will vary depending on your particular application.

On some applications, after lowering your airbag pressure, a small gap may remain between the overload spring and the stable load. This is acceptable. It is not necessary for the stable load to be in continuous contact with the overload.

A7200 PARTS INVENTORY

4 - STABLE LOAD PADS

03-08 DODGE INSTALLATION

Option A

Standard Installation

1. Unbolt and remove the factory rubber contact pad. Bolt the Stable Load in position as seen in photo C.

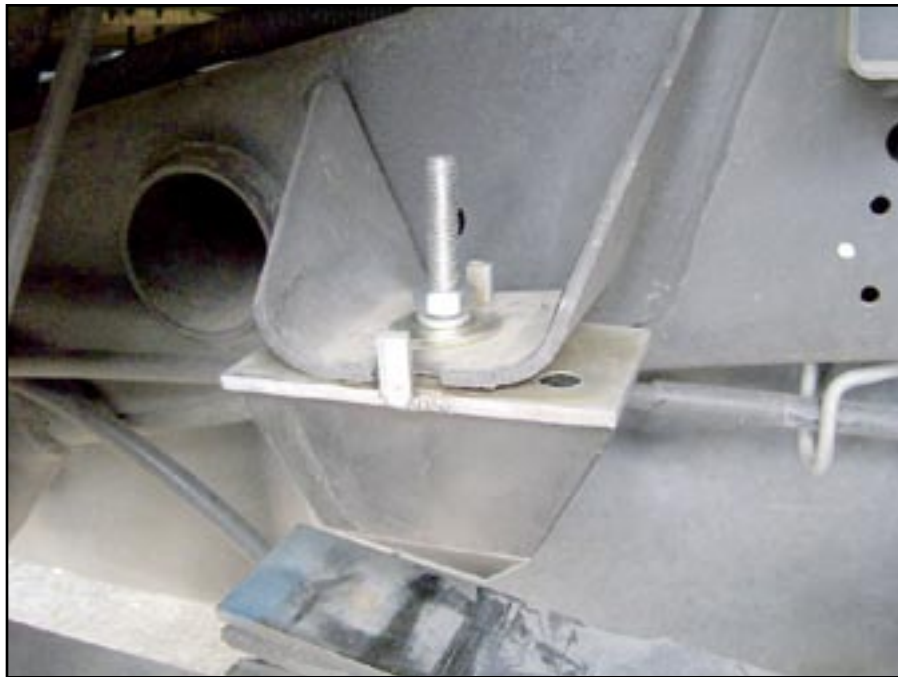


PHOTO C

Option B

To extend Stable Load an additional 1" on 2005 and newer trucks. The factory rubber contact pad can be sandwiched between the Stable Load and the frame bracket as seen in photo D.

1. Start by removing the factory contact pad.
2. Spray WD-40 on to the head of the contact pad stud bolt to aid in pressing it through the rubber pad. Use a vice as seen in Photo E to press out the stud bolt. NOTE: ON 2003 AND 2004 TRUCKS, THE CONTACT PAD STUD IS WELDED IN POSITION AND CANNOT BE REMOVED!
3. Now set the factory contact pad on top of the Stable Load and bolt it into position as seen in Photo D. Repeat the process for the three remaining Stable Loads.



PHOTO D

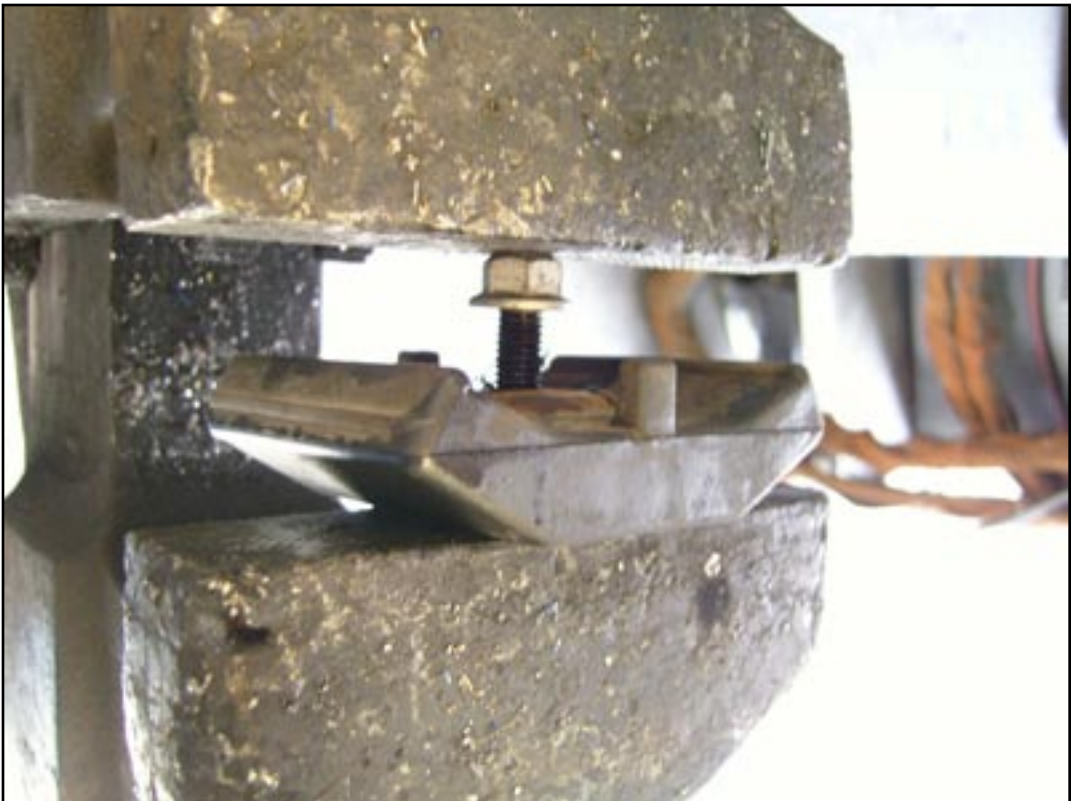


PHOTO E

99-08 FORD INSTALLATION

1. Spray the top of the factory rubber contact pad with WD-40 or equivalent lubricant. Use a screwdriver to pry the pad off of the frame bracket (see Photo A).
2. Bolt the Stable Load in position as shown in Photo B. Repeat the process for the three remaining Stable Loads.

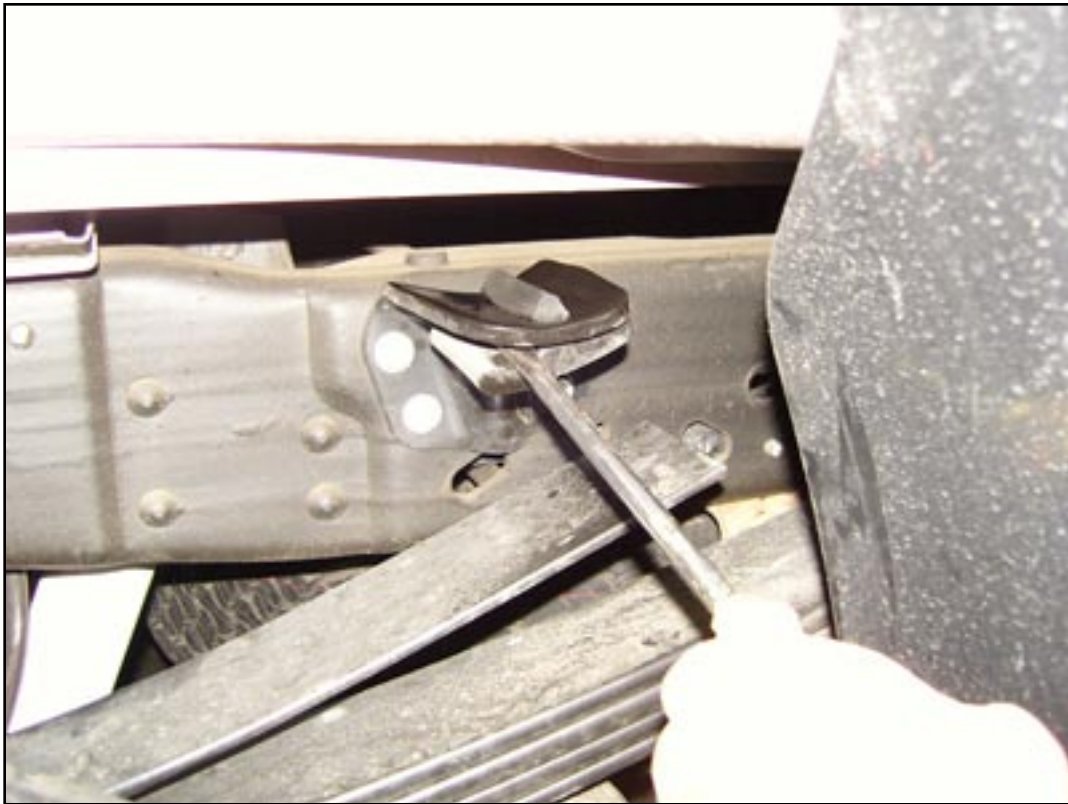


PHOTO A



PHOTO B

94-02 DODGE INSTALLATION

PHOTO A



1. The factory installed contact overload bump stops have 5/8" diameter holes in the steel bracket, which is covered by either rubber or plastic depending on the year of the truck. If you have access to a long 1/2" drill bit (approx. 20"), you can drill out the plastic or rubber that is covering the factory holes without unbolting and removing the bump stops from the truck frame (Proceed to Step 3). In the event a long 1/2" drill bit is not available, it will be necessary to unbolt and remove the bump stops to drill out the plastic/rubber.
2. If removal of the bump stops is necessary, start by spraying the factory fasteners with WD-40 or equivalent. Unbolt and remove all four bump stops.
3. Clamp the bump stop bracket in a vice and measure out 2 3/4" as seen in photo A. This is the location where the 1/2" hole will be drilled. Drill out the rubber/plastic on all four bump stop brackets.

PHOTO B



PHOTO C



4. Clamp the Stable Load in the vise and use a screw driver and hammer to remove the inner anti-rotation tab (See Photo B). The outer tab will remain to prevent rotation of the Stable Load while in place.

5. After removing one tab from each Stable Load, bolt the Stable Loads to their respective bump stop brackets (See Photo C) and bolt the bump stop brackets back to the truck frame.

Frame Mounted Tie Downs



Leading the camper tie down industry in strength, quality, advanced design and installation. TorkLift TRUE frame mounted tie downs are far superior to all tie down systems available.

The TorkLift system is unique in its design and is patented. Four independent tie down points (with no belly or crossbar) working much like your receiver type trailer hitch as the inserts are removable allowing the system to be virtually undetectable when not in use.

They are designed for each make and model to fit tight to the frame so as not to compromise ground clearance. TorkLift tie downs are not universal 'one size fits all' therefore all the problems with correct fit for each particular application have been eliminated.

**VISIT WWW.TORKLIFT.COM
FOR MORE INFORMATION**

Super Hitch

High strength extended hitch system engineered for safely towing all types of trailers behind your truck and camper. With a towing capacity of 12,000 lbs. with an extension, (17,000 lbs. without) the SuperHitch is rated the strongest in the industry.



CONTACT YOUR LOCAL DEALER FOR MORE DETAILS

TURNBUCKLE SPRINGLOAD OPTIONS

CONTACT YOUR LOCAL DEALER FOR MORE DETAILS

Torklift requires all 4 tiedown points to be spring loaded in order to qualify for our manufacturer's

Industry Exclusive Camper Anchor and Truck Frame Warranty

BASIC SPRINGLOAD KIT - S9000

**Includes 2 External Springload Units
& 2 Heavy Duty Forged Turnbuckles.
Lifetime Guarantee**



FASTGUNS LEVER ACTION TURNBUCKLES S9520-GREY SS / S9521-WHITE SS / S9527-POLISHED SS FOR BED MOUNTED TIEDOWNS S9522-GREY SS/ S9523-WHITE SS/ S9526-POLISHED FRAME OR BUMPER MOUNTED TIEDOWNS

**Includes 2 Stainless Steel Turnbuckles with an Internal
"Set" Spring. Available in 2 Lengths and 3 Finishes
(Grey, White or Polished Stainless Steel)
Lifetime Guarantee**

FASTGUN DERRINGERS

Zinc S9524

Stainless Powdercoat S9525

Polished Stainless S9528

**Transforms Your Pre-Existing Conventional
Turnbuckles into a Lever Action
FastGun Style Turnbuckle.
Kit includes 4 lever action Derringers**



SPRINGLOAD XL KIT - S9050

**This set includes 2 Long Chrome Barreled
Turnbuckles with an Internal "Set" Spring.
The Springload XL Kit comes with a Pol-
ished Chrome Finish and is compatible
with the FastGun Derringers.
2 year warranty**

TORKLIFT LIMITED WARRANTY

322 N RAILROAD AVE, KENT, WA 98032 (800) 246-8132

LIMITED WARRANTY

TorkLift warrants its hitches, custom hitch receivers, frame mounted tiedowns and FastGun Turnbuckles from date of purchase against defects in material and workmanship under normal use and service, ordinary wear and tear excepted, for the ownership life of the original consumer purchaser. TorkLift will replace FREE OF CHARGE any part which proves defective in material or workmanship when presented to TorkLift, TRANSPORTATION CHARGES PREPAID, at the address above. THIS WARRANTY IS LIMITED TO DEFECTIVE PARTS REPLACEMENT ONLY. LABOR CHARGES AND/OR DAMAGE INCURRED IN INSTALLATION OR REPLACEMENT AS WELL AS INCIDENTAL AND CONSEQUENTIAL DAMAGES CONNECTED THEREWITH ARE EXCLUDED. This warranty does not include the finish or paint on our products. Rusting, cracking or peeling of the finish is also excluded. Some states do not allow the exclusion or limitation of incidental or consequential damages, so the above limitation or exclusion may not apply to you. Any damage to the hitch, custom hitch receiver or frame mounted tiedowns as a result of misuse, abuse, neglect, accident, improper installation or any use violative of instructions furnished by us WILL VOID THE WARRANTY. This warranty gives you specific legal rights, and you may also have rights which vary from state to state. With warranty service or performance, you may be able to go to a small claims court, a state court or a federal district court.



**322 NO. RAILROAD PHONE (800) 246-8132
KENT, WA 98032 FAX (253) 854-8003**

OR VISIT OUR WEBSITE: WWW.TORKLIFT.COM

Dear Valued Customer,

Thank you for making TorkLift your choice for truck, camper packages and accessories for your vehicle. By choosing TorkLift products, you have chosen a company that has been serving the RV industry for nearly 30 years and whose name has become synonymous with strength, quality and advanced design and installation.

Please take a few moments of your time to complete the Product Registration Warranty Card on the next page and send it back to us at the address listed above. When registering your newly purchased TorkLift products, you can be assured that your contact information is secure and that you and your product are getting the attention and respect that you deserve.

Thank you again for choosing TorkLift quality products.



OFFICIAL WARRANTY REGISTRATION CARD

PLEASE FILL OUT THIS FORM COMPLETELY AND RETURN TO TORKLIFT WITHIN 30 DAYS OF PURCHASE ACCOMPANIED BY A COPY OF YOUR ORIGINAL RECEIPT

1. PART(S) PURCHASED

PART#: _____ PART#: _____
PART#: _____ PART#: _____

2. PURCHASER INFORMATION

NAME: _____

ADDRESS: _____

CITY: _____ STATE: _____ ZIP / POSTAL CODE: _____

PHONE: (____) _____ - _____ EMAIL: _____

3. TRUCK INFORMATION

YEAR: _____ MAKE: _____

MODEL: _____ BED LENGTH: _____

4. CAMPER INFORMATION

YEAR: _____ MAKE: _____ MODEL: _____

5. DEALER INFORMATION

PURCHASED FROM: _____

ADDRESS: _____

CITY: _____ STATE: _____ ZIP / POSTAL: _____

INSTALLED BY: OWNER ABOVE DEALER ANOTHER DEALER

IF ANOTHER DEALER, WHO: _____