



OVER 35 YEARS OF INNOVATION, QUALITY, SAFETY.
IMPORTANT OWNER-OPERATOR INSTALLATION INSTRUCTIONS

A7735 Extended Power

Works with any 2" x 2" length single bar extension as long as it does not have lateral support chains.

A7736 Extended Power

Works with 36" - 60" SuperTruss Extensions (SuperHitch F1005H- requires minimum 48" SuperTruss Extension) *Minimum length requirement due to interference with lateral support safety Chains.*



REVISED vers14 BY: DK 11/23/15

TECH SUPPORT (800) 246-8132

**AFTER INSTALL, PLEASE GIVE
THIS BOOKLET TO YOUR CUSTOMER**

EXTENDED POWER INVENTORY

A7735

1-RUBBER STOPPER
1-BATTERY BOX-GROUP 24
1-T- HANDLE
2-1/2" LOCK WASHER HIGH ALLOY
4-1/2" FLAT WASHER
2-1/2"-13 X 4.5" HEX BOLT GR5
2-1/2"-13 NUT
1-3/8"-16 X 3 HEX BOLT GR5 ZINC
1-3/8" LOCK WASHER
2-3/8" FLAT WASHER
1-3/8" X 1" BOLT GR5
2- 3/8"-16 NUT
1-3/8" X 2" HEX BOLT GR5 PLAIN
4-1/4" X 1-1/4" FENDER WASHER
4-1/4"-20 X 3/4" HEX BOLT GR5 ZINC
4-1/4" USS FLAT WASHER
4-1/4" LOCK WASHER
4-1/4" NUT
1-LOCK
1-BATTERY TRAY
1-ADJUSTABLE TRAY MOUNT
1-U-COLLAR
2- TUBING SPACER

A7736

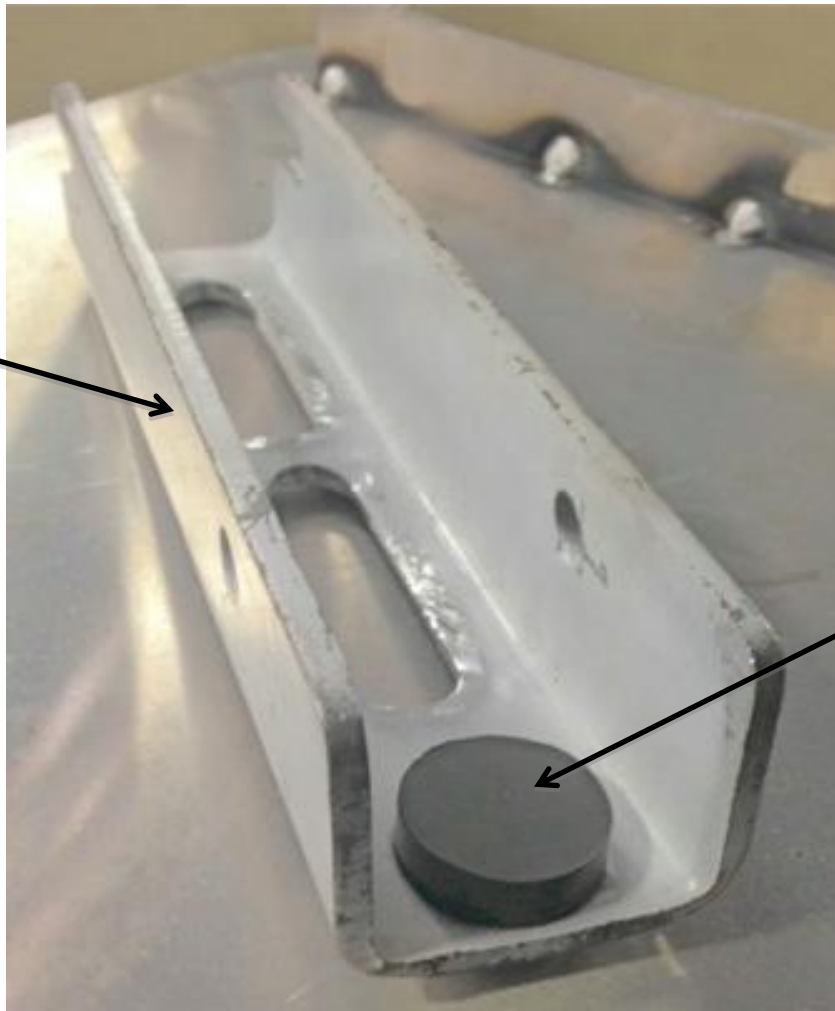
1- RUBBER STOPPER
1- BATTERY BOX-GROUP 24
1- T- HANDLE
6- 1/2" LOCK WASHER HIGH ALLOY
10- 1/2" FLAT WASHER
2- 1/2"-13 X 4.5" HEX BOLT GR5
4- 1/2"-13 X 1-1/2" GR5
6- 1/2"-13 NUT
1- 3/8"-16 X 3" HEX BOLT GR5 ZINC
1- 3/8" LOCK WASHER
2- 3/8" FLAT WASHER
1- 3/8" X 1" BOLT GR5
2- 3/8"-16 NUT
1- 3/8" X 2" HEX BOLT GR5 PLAIN
4- 1/4" X 1-1/4" FENDER WASHER
4- 1/4"-20 X 3/4" HEX BOLT GR5 ZINC
4- 1/4" USS FLAT WASHER
4- 1/4" LOCK WASHER
4- 1/4" NUT
1- LOCK
1- BATTERY TRAY
1- U-COLLAR
1- ADJUSTABLE TRAY MOUNT
1- CHAIN PLATE EXTENSION
2- FLAT PLATE WASHER
2- RECTANGLE SPACER SHIM

INSTALLATION INSTRUCTIONS

STEP 1-

Locate and install the RUBBER BUMPER onto the lower hole in the ADJUSTABLE TRAY MOUNT. See Picture 1.1

ADJUSTABLE TRAY
MOUNT



RUBBER BUMPER

STEP 2-

Take one 3/8"-16 X 3" HEX BOLT GR5 ZINC and one 3/8" FLAT WASHER and install through the top of the BATTERY TRAY. Then install one 3/8" FLAT WASHER, one 3/8" LOCK WASHER and one 3/8"-16 NUT. On the bottom of the Battery tray, install one 3/8"-16 NUT onto one 3/8" X 2" HEX BOLT GR5 PLAIN and thread into the welded nut. Hand tighten. See Picture 2.1



STEP 3- Follow the step associated with your part number.
Install the U-COLLAR onto the extension at this time.

A7735 Installation only- After installing the U-COLLAR, take one 1/2"-13 X 4.5" HEX BOLT GR5 and two 1/2" FLAT WASHERS and install through the upper slotted hole. You will want to have the threads on which ever side you wish the battery to be located. Use one TUBING SPACER under the extension and between the U-COLLAR. Repeat on the lower slotted hole. Take the ADJUSTABLE TRAY MOUNT and install onto the U-COLLAR and secure with one 1/2" LOCK WASHER HIGH ALLOY and one 1/2"-13 NUT on each bolt. Install the ADJUSTABLE TRAY MOUNT with the RUBBER BUMPER on the bottom. Install one 3/8" X 1" BOLT GR5 onto the weld nut on the top of the U-COLLAR. Tighten until snug. See Picture 3.1 & 3.2



U-COLLAR



ADJUSTABLE TRAY
MOUNT

A7736 Installation only- After installing the U-COLLAR, take one 1/2"-13 X 4.5" HEX BOLT GR5 and two 1/2" FLAT WASHERS and install through the upper slotted hole between the Trusses. You will want to have the threads on which ever side you wish the battery to be located. Use one RECTANGLE SPACER SHIM under the extension; between the U-COLLAR on each side. Repeat on the lower slotted hole underneath the lower Compression tube. Take the ADJUSTABLE TRAY MOUNT and install onto the U-COLLAR and secure with one 1/2" LOCK WASHER HIGH ALLOY and one 1/2"-13 NUT on each bolt. Install the ADJUSTABLE TRAY MOUNT with the RUBBER BUMPER on the bottom. Install one 3/8" X 1" BOLT GR5 onto the weld nut on the top of the U-COLLAR. Tighten until snug. See Picture 3.3 & 3.4

*Lower Compression Tube
removed for easier view of
Rectangle Spacer Shim.*





STEP 4-

Take the BATTERY TRAY and install onto the ADJUSTABLE TRAY MOUNT. On the side of the BATTERY TRAY, install the T-HANDLE onto the weld nut. This is used to secure and stop vibrations. The previously installed set bolt can be adjusted to align the bottom hole at this time. Use the included LOCK to secure the BATTERY TRAY. See Picture 4.1

3/8" Grade 5 torque to 25 ft-lbs and 1/2 Grade 5 torque to 60 ft-lbs. The lower 3/8" Jam Nut does not need to be torqued, just snugged to keep from rotating.

A7735 Installation is now complete.

A7736 installation continues on next page.

*BATTERY TRAY
installed.*



PICTURE 4.1

STEP 5-

A7736 Installation only- Take the CHAIN PLATE EXTENSION and mount to the bottom of the SuperTruss Extension Chain Plate and line up with the existing holes. Install one 1/2"-13 x 1-1/2" HEX BOLT GRADE 5 along with one 1/2" WASHER USS through each of the two back holes on the chain plate. Secure on the bottom side of the CHAIN PLATE EXTENSION with one 1/2" WASHER USS, one 1/2" LOCK WASHER and one 1/2"-13 HEX NUT. Next install the FLAT PLATE WASHER over the front holes on the chain plate and install one 1/2"-13 x 1-1/2" HEX BOLT GRADE 5 and secure on the bottom side of the CHAIN PLATE EXTENSION with one 1/2" WASHER USS, one 1/2" LOCK WASHER and one 1/2"-13 HEX NUT on each of the previously installed bolts. See Picture 5.1



STEP 6-

A7736 Installation only- Install the Lateral Support Safety Chains as you would normally do so on the ends of the chain plate. Line up the BATTERY BOX-GROUP 24 with the holes in the BATTERY TRAY, mark your holes to be drilled. Remove the Lateral Support Safety Chains and remove the BATTERY TRAY and BATTERY BOX-GROUP 24 and drill holes with 1/4" drill bit. Secure with four 1/4"-20 X 3/4" HEX BOLT GR5 ZINC and four 1/4" X 1-1/4" FENDER WASHERS on the side of the BATTERY BOX-GROUP 24. On the BATTERY TRAY side use four 1/4" USS FLAT WASHERS, four 1/4" LOCK WASHERS and four 1/4" NUTS to secure. Reinstall BATTERY TRAY. See Picture 6.1 & 6.2

3/8" Grade 5 torque to 25 ft-lbs and 1/2 Grade 5 torque to 60 ft-lbs. The lower 3/8" Jam Nut does not need to be torqued, just snugged to keep from rotating.

NOTE: Adjustable Tray Mount: Examine the Battery Tray for adequate ground/camper clearance. If additional ground/camper clearance is needed, the Adjustable Tray Mount can be moved up or down. It is the Responsibility of the the installer to inspect their Extended Power for adequate ground clearance.



PICTURE 6.2



Torklift International Limited Lifetime Warranty Information

322 N Railroad Ave. Kent, WA 98032

Torklift will require proof of purchase to register, with pictures of any defective product before issuing a replacement. Torklift will not register any product without proof of purchase, which can be faxed, scanned, emailed, or mailed to the information provided below. Torklift warrants its hitches, custom hitch receivers, frame mounted tie downs, turnbuckles, and accessories (excluding wire harnesses which carry a 90 day warranty) from date of purchase against defects in material and workmanship under normal use and service for the ownership life of the original consumer purchaser. ALL COMMERCIAL APPLICATIONS ARE WARRANTED FOR A PERIOD OF 90 DAYS FROM THE DATE OF INSTALLATION/SERVICE. Torklift will replace FREE OF CHARGE any part, which proves defective in material or workmanship when presented to Torklift, TRANSPORTATION CHARGES PREPAID by purchaser, at the address above. THIS WARRANTY IS LIMITED TO DEFECTIVE PARTS REPLACEMENT ONLY. LABOR CHARGES AND/OR DAMAGE INCURRED IN INSTALLATION OR REPLACEMENT, AS WELL AS INCIDENTAL AND CONSEQUENTIAL DAMAGES CONNECTED THEREWITH ARE EXCLUDED. This warranty does not include the finish or paint on our products. Rusting, cracking or peeling of the finish is also excluded. Some states do not allow the exclusion or limitation of incidental or consequential damages, so the above limitation or exclusion may not apply to you. Any damage to Torklift products as a result of misuse, abuse, neglect, accident, improper installation or any use violation of instructions furnished by Torklift or WHEN USED IN ANY COMMERCIAL APPLICATION WILL VOID THE WARRANTY. This warranty gives you specific legal rights, and you may also have rights, which vary from state to state. With warranty service, you may be able to go to a small claims court, a state court or a federal district court.



OVER 35 YEARS OF INNOVATION, QUALITY, SAFETY.

322 N Railroad Ave. Kent, WA 98032

Phone (800) 246-8132

Fax (253) 854-8003

or visit our website: www.TorkLift.com

Dear Valued Customer,

Thank you for making TorkLift your choice for truck, camper packages and accessories for your vehicle. By choosing TorkLift products, you have chosen a company that has been serving the RV industry for nearly 40 years and whose name has become synonymous with strength, quality and advanced design and installation.

Please take a few moments of your time to complete the Product Registration Warranty Card on the next page. When registering your newly purchased TorkLift products, you can be assured that your contact information is secure and that you and your product are getting the attention and respect that you deserve.

Thank you again for choosing TorkLift quality products.

**Register for your lifetime warranty and receive a free Torklift
International gift.**

To Fax: Send copies of the questionnaire, warranty card and receipt to
253-854-8003

To E-mail: Send copies of the questionnaire, warranty card and receipt to
warranty@torklift.com

To Mail: Send to Torklift International 322 N Railroad Ave. Kent, WA 98032



OVER 35 YEARS OF INNOVATION, QUALITY, SAFETY.

OFFICIAL WARRANTY REGISTRATION CARD

PLEASE FILL OUT THIS FORM COMPLETELY AND RETURN TO TORKLIFT WITHIN
30 DAYS OF PURCHASE ACCOMPANIED BY A COPY OF YOUR ORIGINAL RECEIPT

TODAY'S DATE: _____

1. PART(S) PURCHASED

PART#: _____ PART#: _____
PART#: _____ PART#: _____

2. PURCHASER INFORMATION

NAME: _____

ADDRESS: _____

CITY: _____ STATE: _____ ZIP / POSTAL CODE: _____

PHONE: (____) _____ - _____ EMAIL: _____

3. TRUCK INFORMATION

YEAR: _____ MAKE: _____

MODEL: _____ BED LENGTH: _____

4. CAMPER INFORMATION

YEAR: _____ MAKE: _____ MODEL: _____

5. DEALER INFORMATION

PURCHASED FROM: _____

ADDRESS: _____

CITY: _____ STATE: _____ ZIP / POSTAL: _____

INSTALLED BY: ☐ OWNER ☐ ABOVE DEALER ☐ ANOTHER DEALER

IF ANOTHER DEALER, WHO: _____