



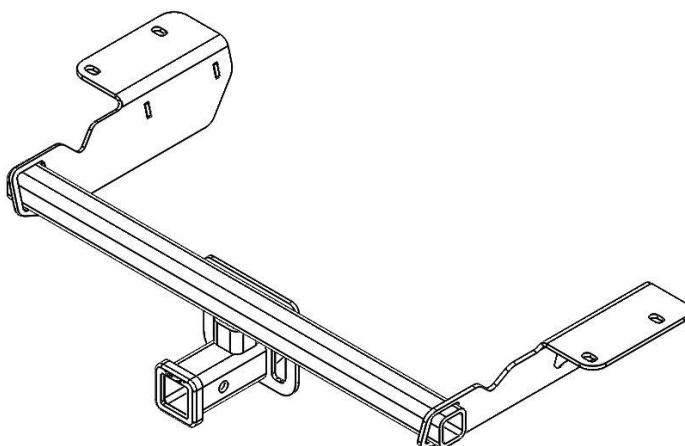
**ecoHITCH** - Designed Specifically For Your **Green Vehicle**

# Installation Instructions

Application Fits

Honda CRV - X7345

350 lbs Tongue Weight/3,500 lbs Weight Carrying



Torklift Central  
315 Central Ave N  
Kent, WA 98032  
253-854-1832  
[www.torkliftcentral.com](http://www.torkliftcentral.com)  
[support@torkliftcentral.com](mailto:support@torkliftcentral.com)

**Stay Connected**



torkliftcentral



torkliftcentral



tlcentral



torklift central

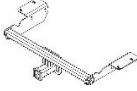













torklift central



Version : 2 Date : 12/11/2017

## Parts Inventory

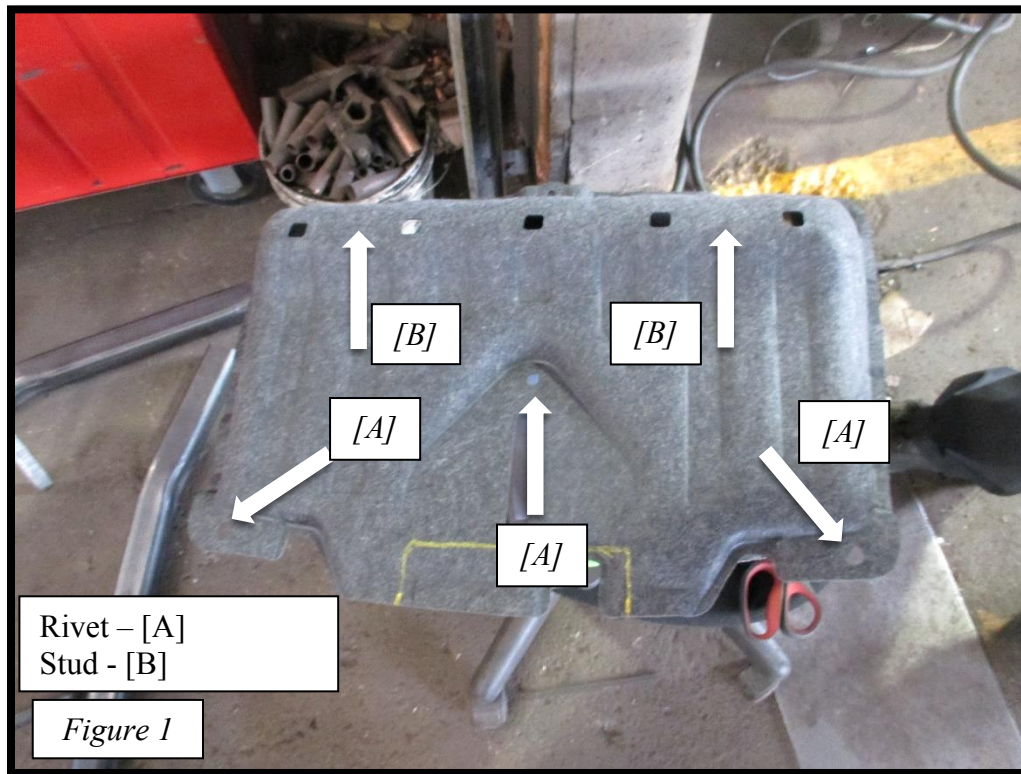
Item Image	Item Description	Quantity
	X7345 Hitch	1
	1/2 - 13 by 1 1/2" Hex Head Bolt – Grade 8	4
	1/2" Star Washer	4
	1/2" SAE Flat Washer - Grade 8	4
	1/2"-13 Hex Nut – Grade 8	4
	1 by 2 Plate Washer	4
	1/2" Bolt Fisher	1
	1/2" Split Lock Washer	4
	5/8" - 11 by 2 1/2" Hex Head Bolt – Grade 8	1
	5/8" Flat Washer - Grade 8	2
	5/8" Lock Washer - Grade 8	1
	5/8"-11 Hex Nut – Grade 8	1

### Step 1: Secure the Vehicle.

Raise vehicle on suitable jack stands, ramps or a hoist.

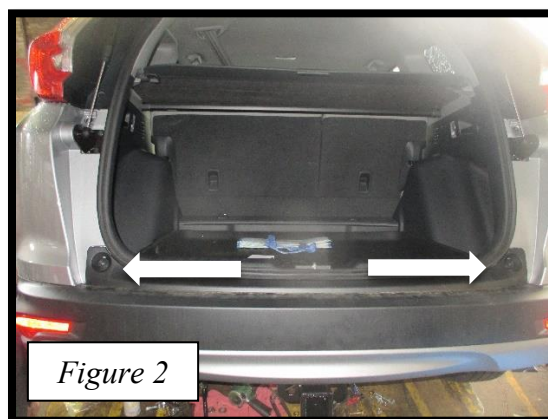
### Step 2: Remove Undercover

On the rear of the vehicle, locate the protective undercover. There will be three plastic push type rivet retainers [A], as seen in figure 1 and two studs with nuts [B]. Remove the plastic rivets and nuts.

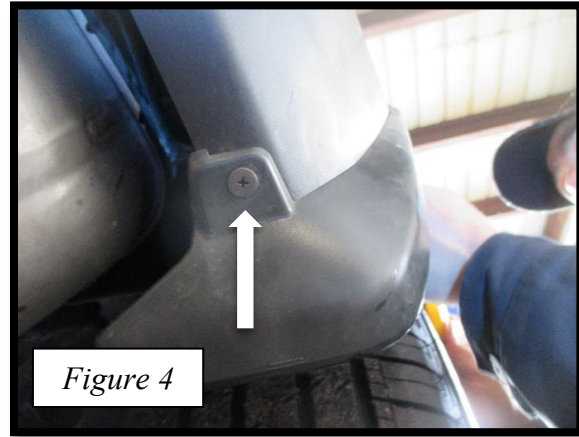
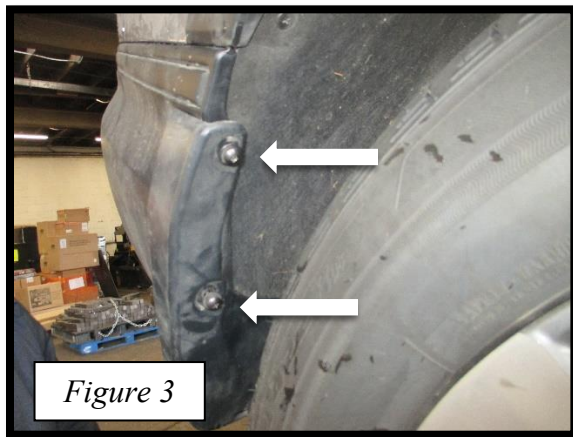


### Step 2: Removing the Bumper

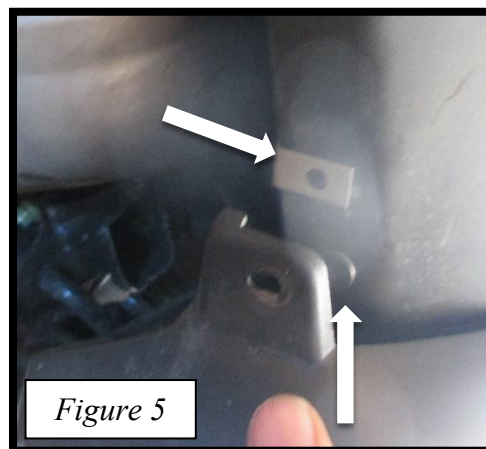
There are 4 steps involved in removing the bumper. The first step, the trunk must be opened and the two inside bolts removed. Location of bolts in figure [2].



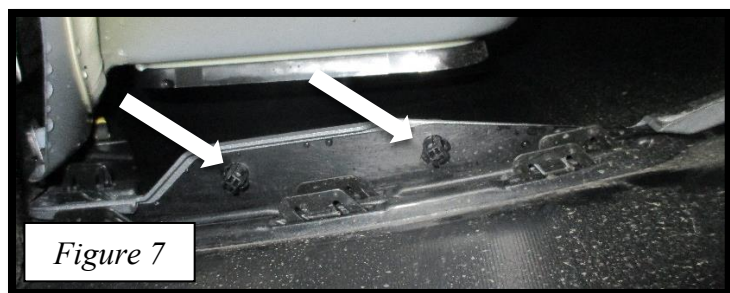
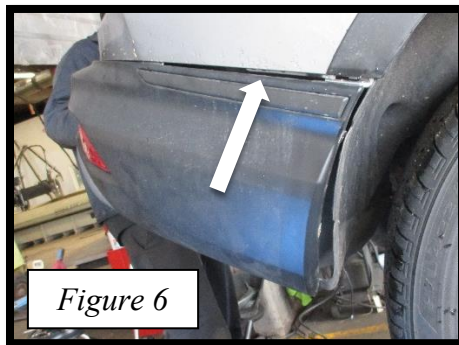
The second step is the removal of the mud flaps on driver and passenger side. Remove the two screws located on the rear wheel well, see figure [3]. Remove the 3<sup>rd</sup> screw on the underside of the mud flaps, see figure [4].



Removing the screw in figure [4] will reveal a hidden screw. Remove this hidden screw as seen in figure [5].

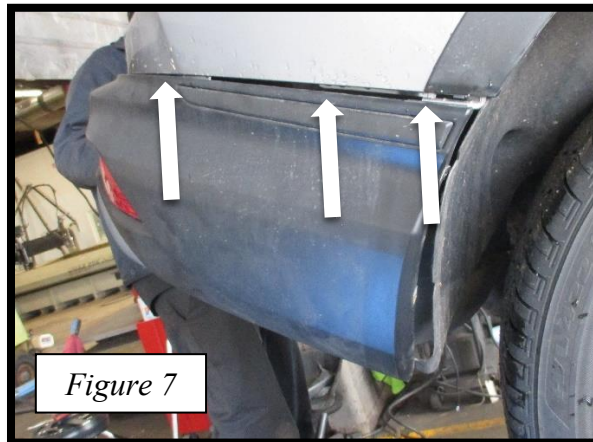


The third step is located on the inside of the bumper, accessed from the underside of the car. Figure [6] shows the location from the outside view point. Figure [7] shows the two plastic push type rivet retainers that need to be removed. Remove the rivets from driver and passenger sides.



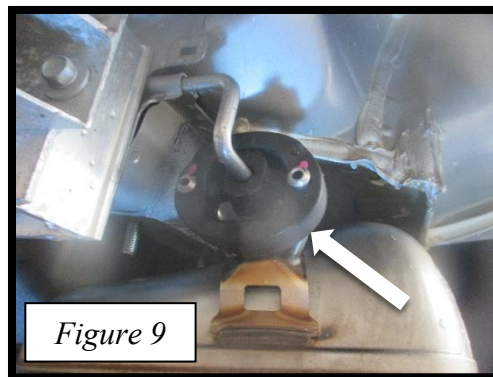
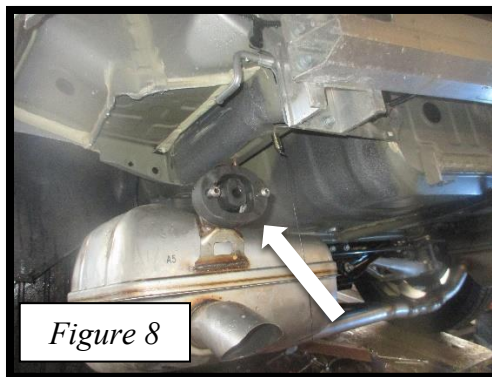


Once all fasteners have been removed begin to peel the bumper fascia away from the vehicle starting at the driver side. Continue unsnapping until you have reached the rear. Repeat this on the passenger side. Once at the rear, unsnap the bumper by pulling rearward. You may use a flathead tool to release the tabs at the center if necessary. Figure [8] shows the beginning location of the snap locks on the passenger side. Store the bumper in a safe manner.



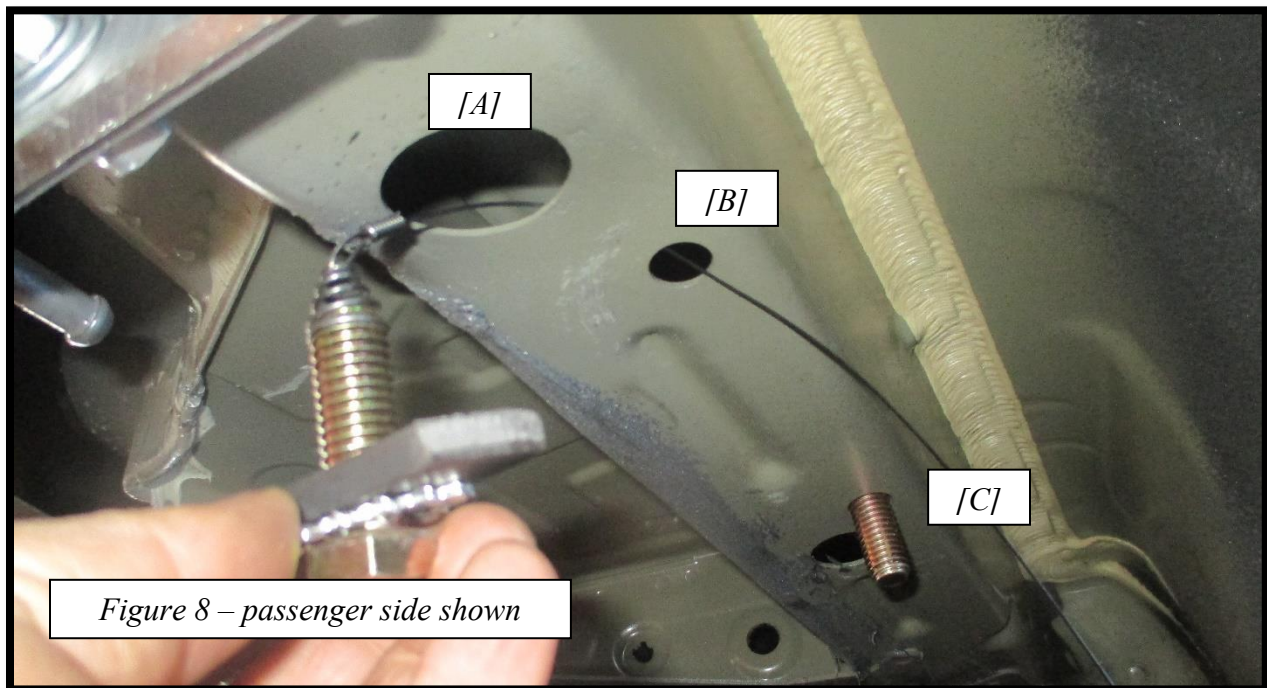
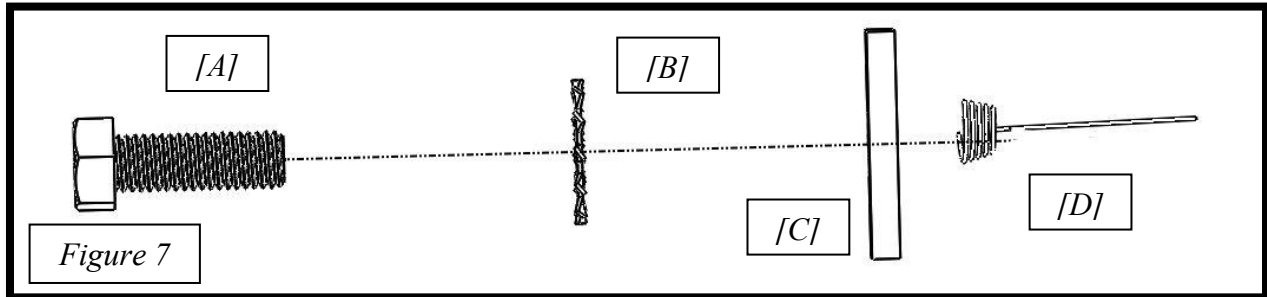
### Step 3: Lowering the Exhaust

Lubricate the rubber exhaust hangers on both side with WD-40 or equivalent, then slide them off of the hanger rods. See Figure [8] and figure [9].

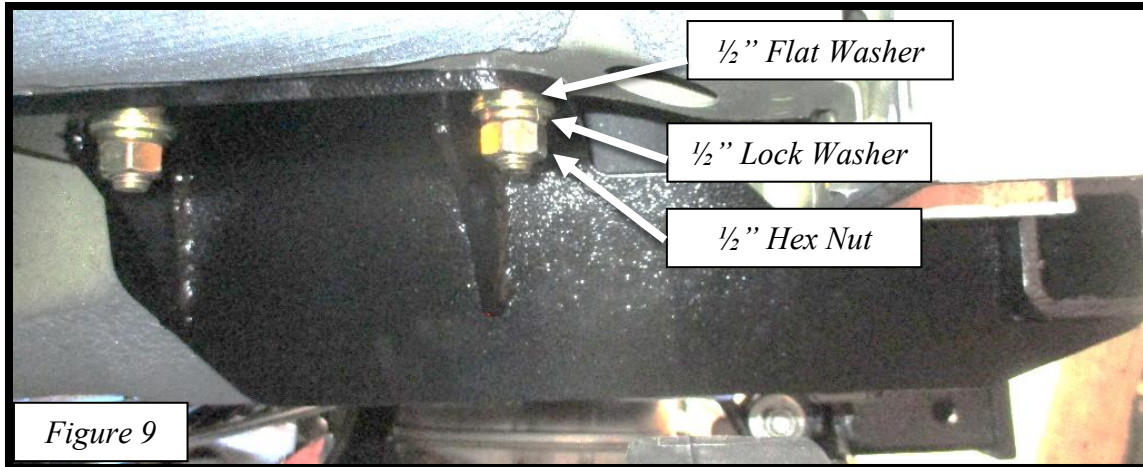


#### Step 4: Installing Hitch

Attach a 1/2" Bolt fisher [D] onto the 1/2-13 X 1-1/2" - Hex Head Cap Screw - Grade 8 [A]. Place a 0.500 - Internal External Lock Washer [B] and a 1 by 2 plate washer [C] through the bolt fisher onto the bolt, see figure [7]. Thread the bolt fisher through hole A into Hole C, see figure [8]. Repeat the figure [7] set up and thread the bolt fisher through hole A into Hole B. The final result will look like figure [8]. Repeat for driver side.



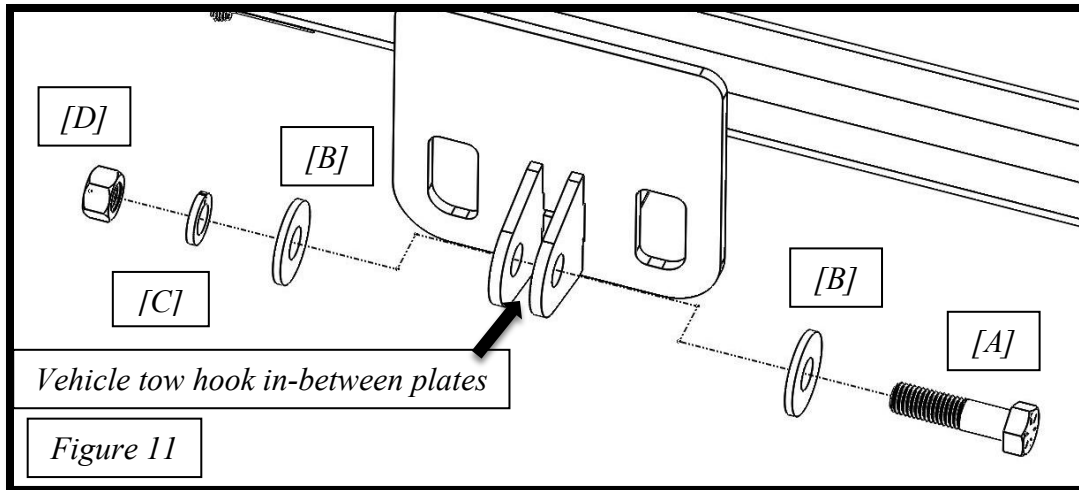
Align the Hitch with the bolt pattern underneath the car, and slowly raise the hitch into position. Make sure you do not accidentally push the bolts back into the frame. The vehicle tow hook will fit directly between the two plates behind the receiver. See figure [10]. With the hitch supported, place one 1/2" - Flat Washer, one 1/2" Lock washer and one 1/2" -13 Hex Nut - Grade 8 on all 4 bolts. See figure [9]. Torque to 65 ft-lbs.



Following the sequence of Figure [11], secure the hitch to the tow hook with: one 5/8"-11 x 2-1/2" Hex Bolt Grade 8 [A], two 5/8" USS Flat Washers [B], one 5/8" - Lock Washer [C], and one 5/8"-11 Grade 8 Hex Nut [D]. See figure [9] for result. Torque to 75 ft-lbs.

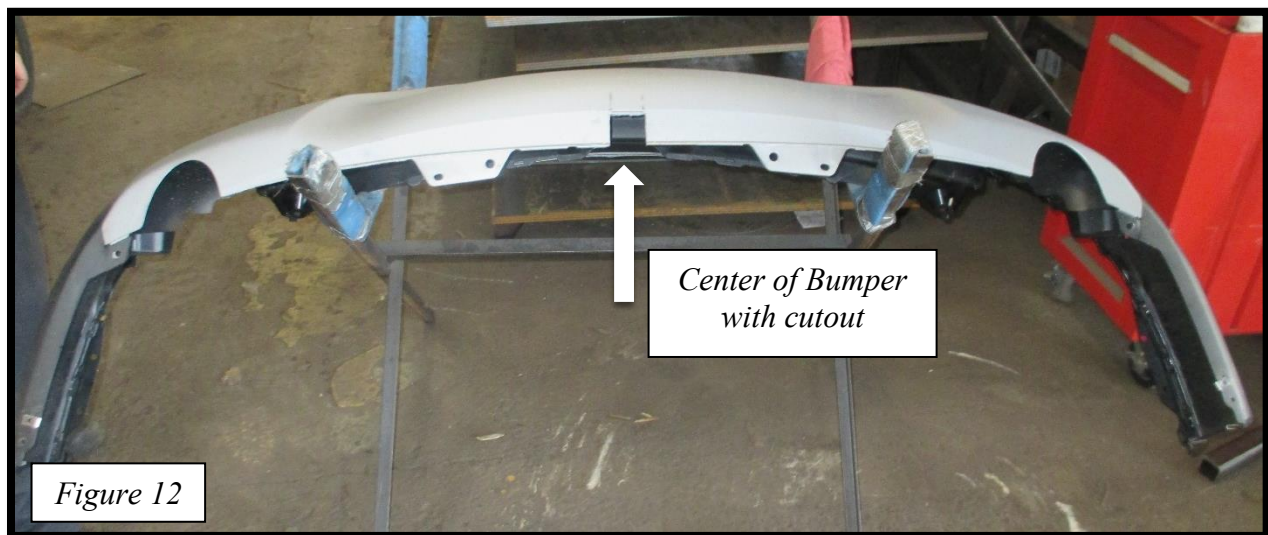




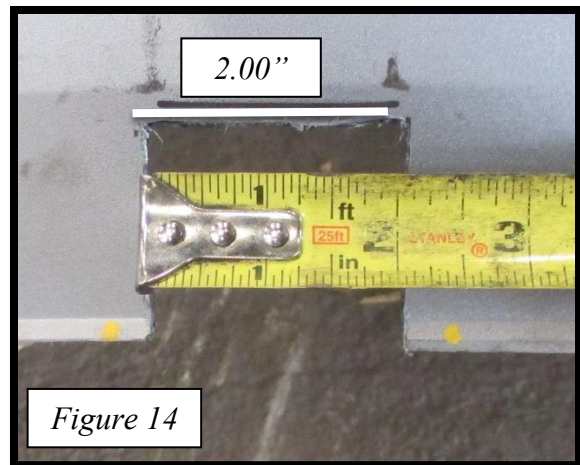
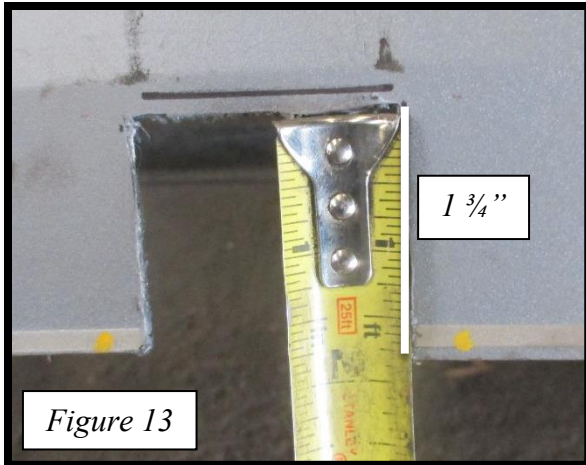


### Step 5: Bumper Cut Out

On the touring model, the **kick sensor must be removed** before the cut-out is made. The underside of the bumper will need a 1  $\frac{3}{4}$ " by 2" cut to accommodate the receiver. The cut-out is centered on the bumper. See figure [12], [13], and [14]. After the cut-out is made, the kick sensor can be reinstalled.







### **Step 6: Reattachment**

After the Hitch bolts have been torqued, reattach the rubber exhaust hangers, the bumper, the mud flaps, and the protective undercover.

**Congratulations on the completed installation of the Subaru Outback Stealth EcoHitch! It is designed with a lifetime warranty for a lifetime of enjoyment. If you have any questions or suggestions please contact our tech support at [support@torkliftcentral.com](mailto:support@torkliftcentral.com) or by phone at 253 854-1832.**

# WARRANTY/DISCLAIMER INFORMATION

Torklift Central requires proof of purchase for warranty claim registration, with pictures of any defective product before issuing a replacement. Torklift will not accept claims on any product without proof of purchase, which can be faxed, scanned, emailed or mailed to the information provided below. Torklift Central warrants its hitches, custom hitch receivers and accessories (excluding electrical wire harnesses which carry a warranty from their specified manufacturer) from date of purchase against defects in material and workmanship under normal use and service for the ownership life of the original consumer purchaser. Torklift Central will replace free of charge any part that proves defective in material or workmanship when presented to Torklift Central, transportation charges prepaid by purchaser, at the address below. **This warranty is limited to defective parts replacement only. Labor charges and/or damage incurred in installation or replacement, as well as incidental and consequential damages connected therewith are excluded.** This warranty does not include normal wear and tear or the finish and paint. Rusting, cracking or peeling of the finish is also excluded. Some states do not allow the exclusion or limitation of incidental or consequential damages, so the above limitation or exclusion may not apply to you. Any damage to Torklift Central products as a result of misuse, abuse, neglect, accident, improper installation or any use violative of instructions furnished by Torklift Central will void the warranty. This warranty gives you specific legal rights and you may also have rights, which vary from state to state. With warranty service, you may be able to go to a small claims court, a state court or a federal district court.

Although Torklift Central trailer hitches are both tested and rated for towing within the specific capacity label found on each trailer hitch. Torklift Central assumes no liability for vehicle manufacturers warranty due to the use of a Torklift Central trailer hitch being used for towing behind any vehicle or using the trailer hitch in a manner that it was not designed for. Although this specific trailer hitch has a load rating, which includes trailer tongue weight, and a trailer weight carrying capacity, Torklift Central is not responsible for the voiding of any warranty on any vehicle due to factory towing limitations. All vehicle warranties are the sole property and responsibility of the owner of the vehicle that the Torklift Central trailer hitch is installed upon. Torklift Central does not endorse towing behind any vehicle if the vehicles manufacturer states that towing is not recommended. Check your vehicle's owner's manual for the proper tow rating of your vehicle.

**ADDRESS:** 315 Central Ave N. Kent, WA 98032

**\*WARNING\*** Your vehicle may have a lower tow rating than this trailer hitch. If your vehicle's tow rating is less than the rated towing capacity on your Torklift Central trailer hitch, your trailer hitch capacity is limited to your vehicle's factory rated towing capacity.

**FOR EXAMPLE:** the label on your Torklift Central trailer hitch states it's capacity is rated for 500 pounds tongue weight and 5,000 pounds towing weight. However your vehicle's factory rated towing capacity is limited to only 350 pounds tongue weight and 3,500 pounds towing weight. In this example your maximum towing capacity of your Torklift Central trailer hitch is limited to 350 pounds tongue weight and 3,500 pounds towing weight as stated by your vehicle's maximum factory tow rating.

**\*DANGER\*** Never exceed your vehicle's manufacturer's recommended towing capacity which may be a lower rating than this trailer hitch

Unsure of your tow rating? Download our towing app from the app store to find your vehicles tow