



TORKLIFT

INTERNATIONAL

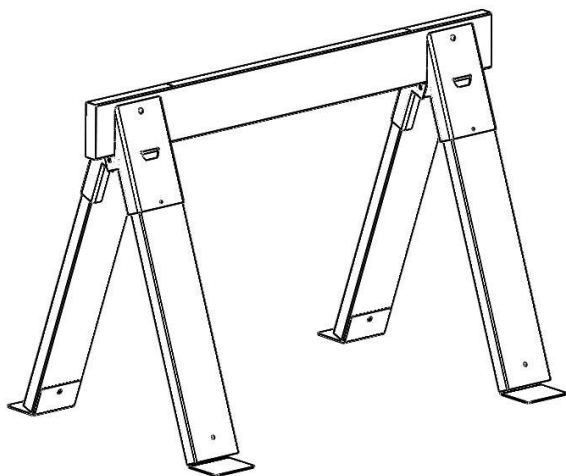
**OVER 35 YEARS OF INNOVATION, QUALITY, SAFETY.
IMPORTANT OWNER-OPERATOR INSTALLATION INSTRUCTIONS**

A7012/CAMPER PACKER

TRUCK/CAMPER ACCESSORIES

APPLICATION FITS

ALL TRUCK CAMPERS



REVISED version 7 BY: DK 11/23/2015
TECH SUPPORT (800) 246-8132

**AFTER INSTALL, PLEASE GIVE
THIS BOOKLET TO YOUR CUSTOMER**

Part Inventory

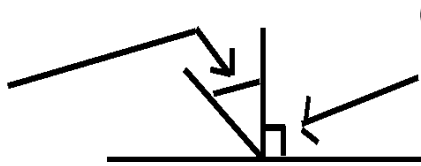
Lumber - 2" x 6" x 50" (50mm x 150mm x 127 cm)	2
Lumber - 2" x 6" x 30" (50mm x 150mm x 76cm)	8
Foot Plates	8
Leg Brackets	8
1/4" x 1-1/4" Lag Screws	8
3/8"-16 x 1" Hex Bolt Grade 5	8
3/8"-16 x 2-1/4" Eyebolt	8
3/8"-16 Grade 8 Hex Nut	8
3/8"-16 Grade 8 Nylock Nut	8
3/8" Flat Washer USS	32
3/8" Lock Washer	8
3/8" x 1-3/4" Pin	4
Pin Clip	4
5/16" Quick Links	8
1/4" x 16" Chain	4

Warning

As a safety precaution it is necessary to keep the Camper Jack Feet within 1" of the Ground when the Camper is on the CAMP'R PACK'R.

Optional Step: On the 8 pieces of 2" x 6" x 30" (50mm x 150mm x 76cm) Lumber cut a 22 degree angle from 90 degrees. SEE STEP 4-7 FOR DETAILS

22 DEGREES



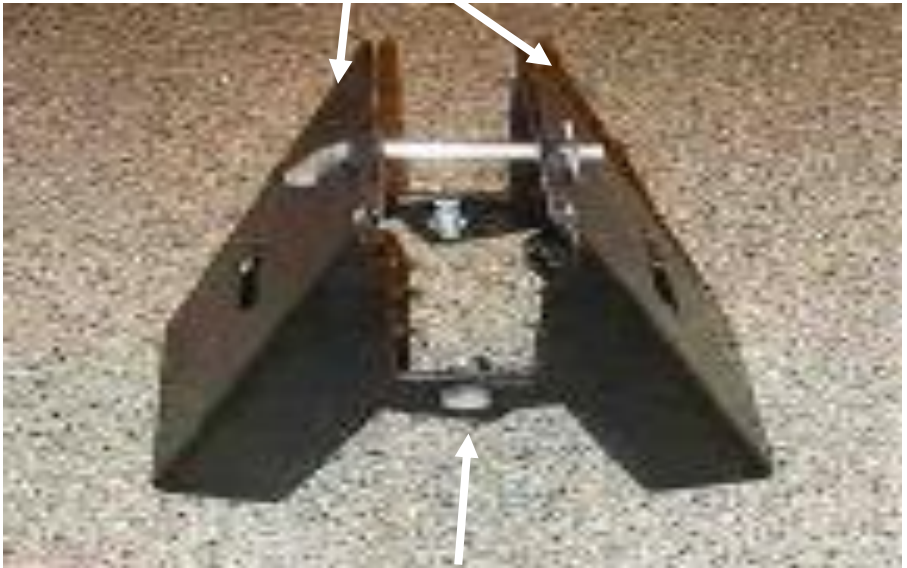
90 DEGREES

Step 1 - Aligning Leg Brackets

Begin by taking two Leg Brackets and aligning the two side holes with each other as seen in Photo 1.1.

Photo 1.1

Leg Bracket



Side Holes

Step 2 - Assembling Leg Brackets

With the Leg Bracket side holes aligned, secure them in place by installing one **3/8"-16 x 1" Hex Bolt** with one **3/8" Flat Washer** through each side hole. Secure each Bolt with one **3/8" Flat Washer**, followed by one **3/8" - 16 Nylock Nut**. Tighten until snug. Do not over tighten the **3/8" - 16 Nylock Nut**. Leave loose enough so that the Leg Brackets can still pivot around the bolts. This will be a **Leg Bracket Assembly**.

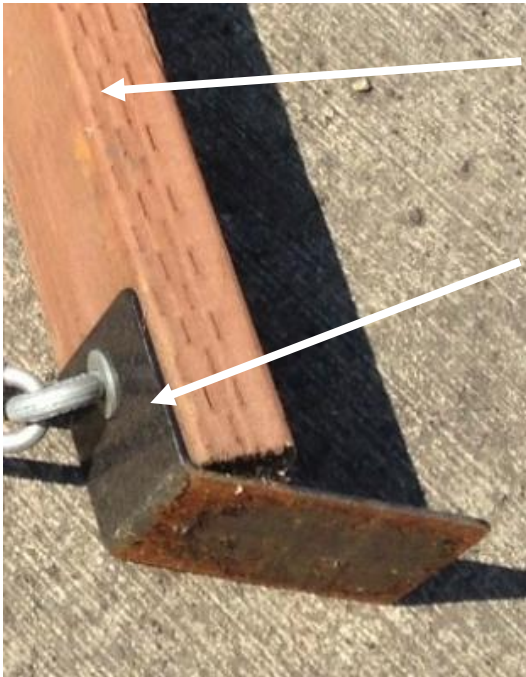
Step 3 - Repeat

Repeat Step 1 and Step 2 for the remaining three **Leg Bracket Assemblies**.

Step 4 - Marking Lumber for Foot Plate

Take one **Lumber - 2" x 6" x 30" (50mm x 150mm x 76cm)** and one **Foot Plate** from the Parts Inventory. Take the **Foot Plate** and place it onto the end of the **Lumber** so that the side with the hole is flush to the **Lumber** and the other side contacts the bottom of the **Lumber** as seen in Photo 4.1. Mark the hole location on the lumber.

Photo 4.1



Lumber - 2" x 6" x 30"
(50mm 150mm x 76cm)

Foot Plate

Step 5 - Drilling

Drill one 3/8" hole straight through the wood.

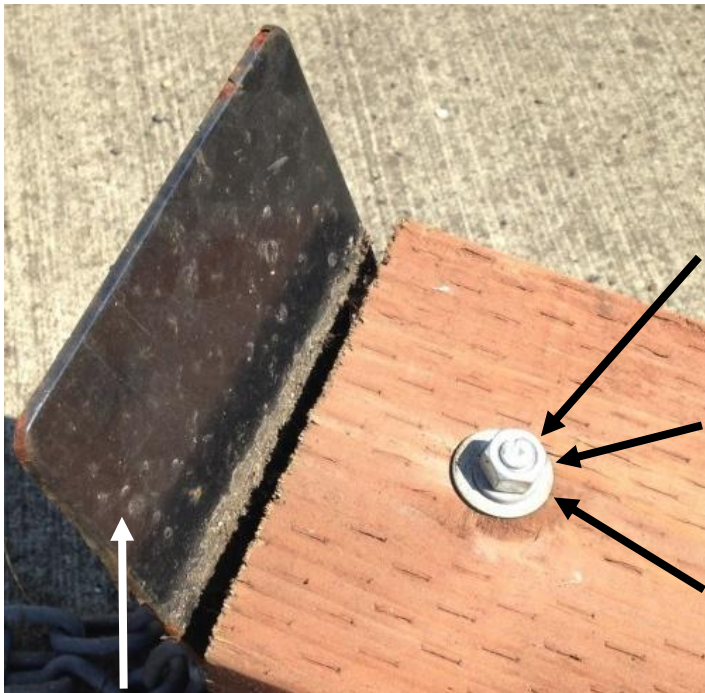
Step 6 - Mounting the Foot Plate

With the 3/8" hole drilled, fit the Foot Plate back onto the Lumber and install one 3/8"-16 x 2-1/4" Eyebolt with one 3/8" Flat Washer into the Foot Plate and out through the Lumber as seen in Photo 4.1.

Step 7 - Securing the Foot Plate

With the 3/8"-16 x 2-1/4" Eyebolt installed through the Lumber, secure it in place with one 3/8" Flat Washer, 3/8" Lock Washer followed by one 3/8" Hex Nut, tighten until snug. See photo 7.1 for reference.

Photo 7.1



3/8"-16 x 2-1/4"
Eyebolt

3/8" Nylock
Nut

3/8" Flat
Washer

Foot Plate

Note: If the Lumber was cut in the optional step, it will sit flush with the Foot Plate on both sides of the bend.

Step 8 - Repeat

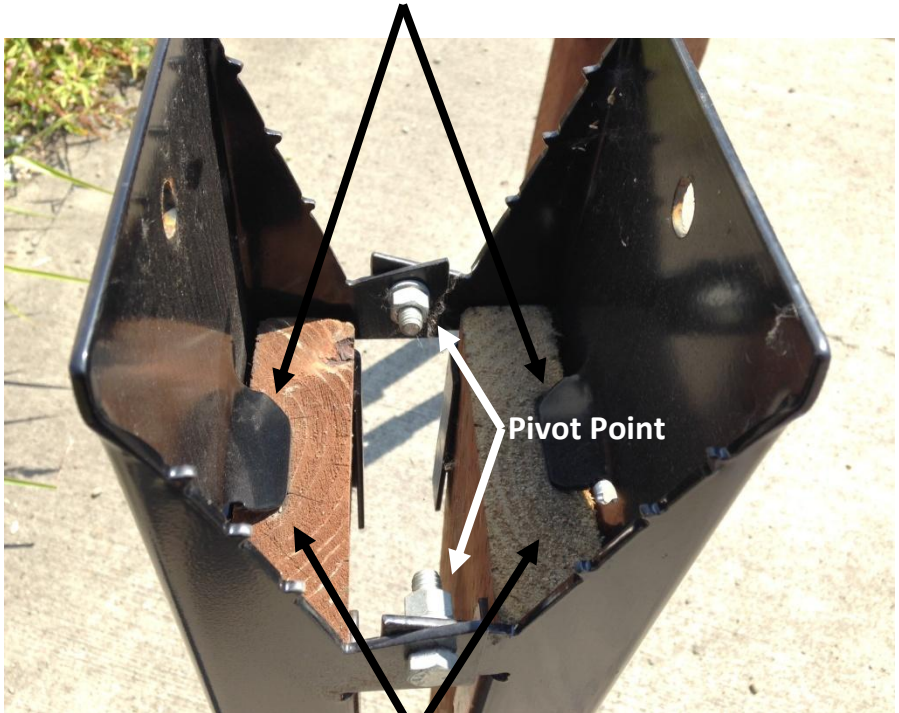
Repeat Step 4 through Step 7, until each piece of **Lumber - 2" x 6" x 30"** (50mm x 150mm x 76cm) has one **Foot Plate** installed on its end, these will be called **Foot Plated Lumber**.

Step 9 - Assembling Lumber 30" with Leg Brackets

Take two **Foot Plated Lumber** pieces and one **Leg Bracket Assembly**. Slide the bare end of the **Foot Plated Lumber** pieces up and into the **Leg Bracket Assembly** with the foot pointed away from the pivot point on the **Leg Bracket Assembly**. Slide the **Foot Plated Lumber** into the **Leg Bracket Assembly** until the pieces hit the Leg Bracket Stop on the **Leg Brackets**. See photo 9.1.

Photo 9.1

Leg Bracket Stop



Foot Plated Lumber

Step 10 - Securing Leg Bracket Assembly

With the **Foot Plated Lumber** properly installed in the **Leg Bracket Assembly**, secure the Lumber in place with the provided **1/4" x 1-1/4" Lag Screws** as seen in photo 10.1, these will be referred to as **Leg Stand Assemblies**.

Photo 10.1



1/4" x 1-1/4" Lag Screws

Step 11 - Repeat

Repeat step 9 and step 10 for the remaining three **Leg Bracket Assemblies** to build a total of four **Leg Stand Assemblies**.

Step 12 - Lumber - 2" x 6" x 50" (50mm x 150mm x 127cm) install

Place the **Lumber - 2" x 6" x 50" (50mm x 150mm x 127cm)** on top of the two **Leg Stand Assemblies** leaving only 1-1/2"(3.81cm) of material over hanging from the **Leg Stand Assemblies** on each side as seen in Photo 12.1.

Photo 12.1 Lumber - 2" x 6" x 50" (50mm x 150mm x 127cm)



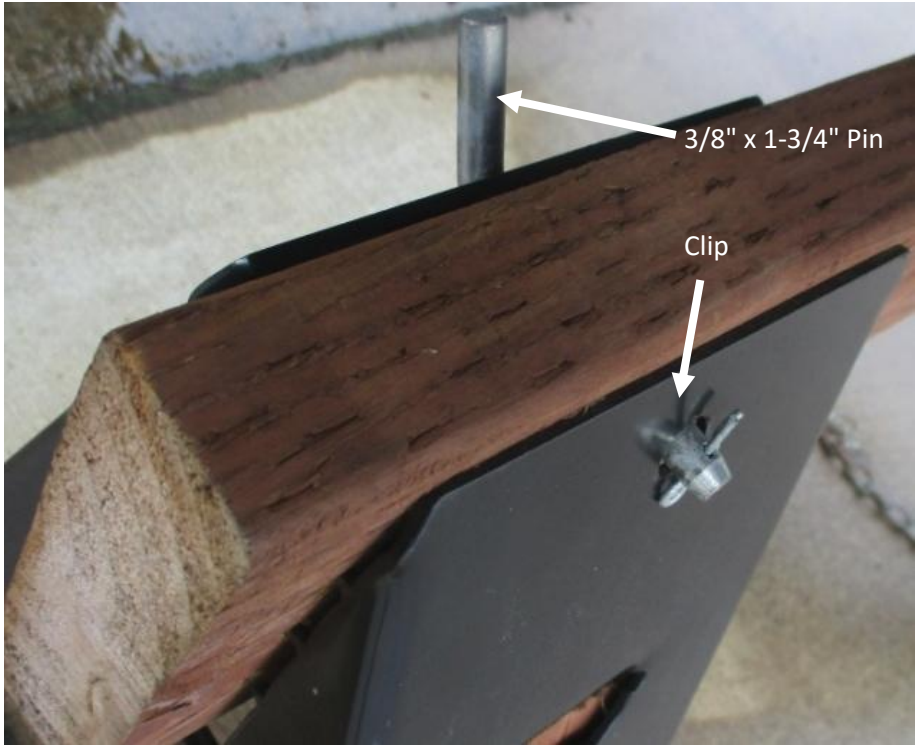
Step 13 - Securing 50" Lumber

Begin Securing the Lumber - 2" x 6" x 50" (50mm x 150mm x 127cm) by spreading the legs on the two Leg Stand Assemblies, this will cause the teeth in the Leg Bracket to bite onto the Lumber.

Note: The Teeth won't fully sink into the wood until the camper has been loaded

Next find the upper hole in the Leg Stand Assemblies and drill out a 7/16" hole through the Lumber and the Leg Brackets. Secure the Leg Stand Assemblies to the Lumber - 2" x 6" x 50" (50mm x 150mm x 127cm) by installing one 3/8" x 1-3/4" Pin through each Leg Stand Assembly and Lumber, Secure it in place with the provided Pin Clip see photo 13.1.

Photo 13.1

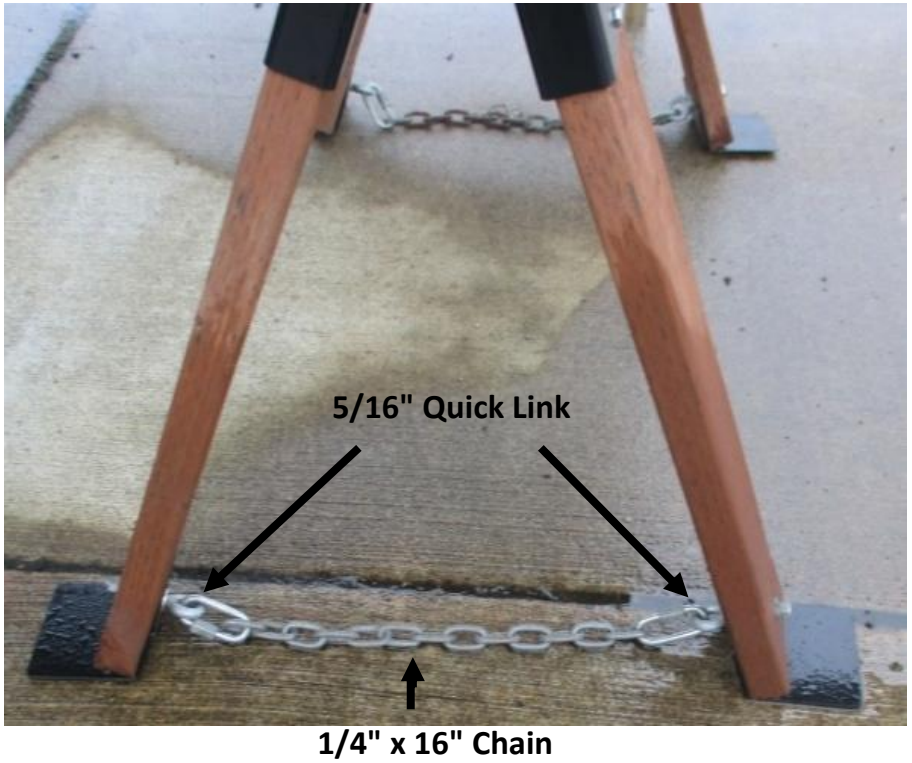


Step 14 - Installing Safety Chain.

With the two Leg Stand Assemblies securely installed onto the **Lumber - 2" x 6" x 50" (50mm x 150mm x 127cm)**, take two pieces of **1/4" x 16" Chain** and install one **5/16" Quick Link** onto the first link and last link of each piece of **1/4" x 16" Chain**.

Next, Install the **1/4" x 16" Chain** using the **5/16" Quick Links** onto the ends of the **3/8"-16 x 2-1/4" Eyebolts** at the bottom of each Leg Stand Assembly, see photo 14.1.

Photo 14.1



Note: The Safety Chain sits loose; it is put in place to prevent over sliding on loose surfaces.

Step 15

Repeat steps 12-14 for the second support structure for the **CAMPER PACKER**.

The **CAMPER PACKER** construction is now complete.



**Completed
CAMPER PACKER**

RECOMMENDED TRUCK CAMPER INSTALLATION INSTRUCTIONS

When securing any heavy load (especially a camper) in your truck bed, your front tie down points should pull the load forward as much as possible. Some camper anchor points may differ with different manufacturers, as well as the camper jack mounting locations. Your Torklift tie down inserts have offset triangular brackets to increase the angle of pull. These are designed to be used in the front facing forward, and the rear facing rearward but can be used in either front or rear. These recommendations are to be considered and followed as a basic rule of thumb . Obviously there will be some applications where this may not be possible. At a minimum, if opposite pull of both front and rear Tiedowns cannot be achieved for whatever reason, you should have at least a forward pull at the front or rear location. If your camper does not come with Rubber Bumpers on the front lower portion of the camper, installing Rubber Bumpers (Torklift has Rubber Bumpers available Part A7001) or using a block of wood such as a 2 x 4 in the bed, will prevent the camper from damaging the front bulk head of the truck bed. Minor movement (or settling) can occur in some incidental harsh driving conditions (on or off road). A rubber bed mat is not a requirement to maintain the lifetime warranty on a Torklift system, but a strong recommendation simply as a safety precaution to protect the truck bed, the bottom of the camper and to give the camper additional support.

TORKLIFT DOES NOT RECOMMEND: Installing your truck camper in your truck on top of a drop in plastic bed liner!!! The drop in plastic bed liners can slide on top of the truck bed surface, and the camper can slide on top of the slick surface of the bed liner. The liner can also act as a spring causing a trampoline effect increasing vertical truck camper movement, independent of the vehicle, possibly resulting in truck bed, and camper damage!

INSTRUCTIONS FOR FINISH MAINTENANCE OF TORKLIFT PRODUCTS

POWDER COATED STEEL:

To keep your Torklift products looking good follow these guidelines. All steel powder coated Torklift products are sandblasted for maximum adhesion and use a high quality industrial urethane based powder coat. Due to the extreme, harsh, undercar environment that your Torklift products live in, (consistently sprayed with corrosive road chemicals such as salt, and road debris), Torklift does not warranty the powder coated finish.

To minimize corrosion from these factors on powder coated steel products, Torklift recommends regularly cleaning and inspecting the powder coated surface and touching up any affected areas with an enamel or urethane based aerosol paint product. If there are any areas of surface rust, there are also aerosol spray rust converters available on the market that can be used as a preparation to touch-up paint application. These finish maintenance products are available at any automotive parts supplier.

POLISHED STAINLESS STEEL :

TorkLift utilizes quality grade 304 stainless steel in our stainless steel polished products. 304 stainless steel is well known for its anti-corrosive properties. However, in some environments such as coastal regions or when coming in contact with some road chemicals, corrosion may occur. For a quick clean simply use WD40 and a cloth rag. We also recommend occasional polishing of our polished stainless products to maintain their attractive finish. Use an approved stainless steel chrome or aluminum mag wheel polish cleaning product which can be purchased from any automotive parts supplier.



Frame Mounted Tie Downs

Leading the camper tie down industry in strength, quality, advanced design and installation. TorkLift TRUE frame mounted tie downs are far superior to all tie down systems available.

The TorkLift system is unique in its design and is patented. Four independent tie down points (with no belly or crossbar) working much like your receiver type trailer hitch as the inserts are removable allowing the system to be virtually undetectable when not in use. They are designed for each make and model to fit tight to the frame so as not to compromise ground clearance. Torklift tie downs are not universal 'one size fits all' therefore all the problems with correct fit for each particular application have been eliminated.

VISIT WWW.TORKLIFT.COM FOR MORE INFORMATION

Original SuperHitch & SuperHitch Magnum

High strength extended hitch system engineered for safely towing all types of trailers behind your truck and camper. With a max towing capacity of 14,000 lbs.(6350Kg. with an extension* , (17,000 lbs.(7711Kg) to 20,000 lbs.(9071Kg) without*) the Original SuperHitch and Superhitch Magnum are rated the strongest in the industry.



CONTACT YOUR LOCAL DEALER FOR MORE DETAILS

TorkLift International Limited Lifetime Warranty Information

322 N Railroad Ave. Kent, WA 98032

Torklift will require proof of purchase to register, with pictures of any defective product before issuing a replacement. Torklift will not register any product without proof of purchase, which can be faxed, scanned, emailed, or mailed to the information provided below. Torklift warrants it's hitches, custom hitch receivers, frame mounted tie downs, turnbuckles, and accessories (excluding wire harnesses which carry a 90 day warranty) from date of purchase against defects in material and workmanship under normal use and service for the ownership life of the original consumer purchaser. **ALL COMMERCIAL APPLICATIONS ARE WARRANTED FOR A PERIOD OF 90 DAYS FROM THE DATE OF INSTALLATION/SERVICE.** Torklift will replace **FREE OF CHARGE** any part which proves defective in material or workmanship when presented to Torklift, **TRANSPORTATION CHARGES PREPAID** by purchaser, at the address above. **THIS WARRANTY IS LIMITED TO DEFECTIVE PARTS REPLACEMENT ONLY. LABOR CHARGES AND/OR DAMAGE INCURRED IN INSTALLATION OR REPLACEMENT, AS WELL AS INCIDENTAL AND CONSEQUENTIAL DAMAGES CONNECTED THEREWITH ARE EXCLUDED.** This warranty does not include the finish or paint on our products. Rusting, cracking or peeling of the finish is also excluded. Some states do not allow the exclusion or limitation of incidental or consequential damages, so the above limitation or exclusion may not apply to you. Any damage to Torklift products as a result of misuse, abuse, neglect, accident, improper installation or any use violative of instructions furnished by Torklift or **WHEN USED IN ANY COMMERCIAL APPLICATION WILL VOID THE WARRANTY.** This warranty gives you specific legal rights, and you may also have rights which vary from state to state. With warranty service, you may be able to go to a small claims court, a state court or a federal district court.

322 N Railroad Ave. Kent, WA 98032

Phone (800) 246-8132

Fax (253) 854-8003

Or visit our website: www.TorkLift.com

Dear Valued Customer,

Thank you for making TorkLift your choice for truck, camper packages and accessories for your vehicle. By choosing TorkLift products, you have chosen a company that has been serving the RV industry for nearly 40 years and whose name has become synonymous with strength, quality and advanced design and installation.

Please take a few moments of your time to complete the Product Registration Warranty Card on the next page. When registering your newly purchased TorkLift products, you can be assured that your contact information is secure and that you and your product are getting the attention and respect that you deserve.

Thank you again for choosing TorkLift quality products.

**Register for your lifetime warranty and receive a free
Torklift
International gift.**

To Fax: Send copies of the questionnaire, warranty card and receipt to
253-854-8003

To E-mail: Send copies of the questionnaire, warranty card and receipt to
warranty@torklift.com

To Mail: Send to Torklift International 322 N Railroad Ave. Kent, WA 98032



OFFICIAL WARRANTY REGISTRATION CARD

PLEASE FILL OUT THIS FORM COMPLETELY AND RETURN TO TORKLIFT WITHIN

30 DAYS OF PURCHASE ACCOMPANIED BY A COPY OF YOUR ORIGINAL RECEIPT

1. PART(S) PURCHASED

TODAY'S DATE: _____

PART #: _____ PART #: _____

PART #: _____ PART #: _____

PART #: _____ PART #: _____

2. PURCHASER INFORMATION

NAME: _____

ADDRESS: _____

CITY: _____ STATE: _____ ZIP / POSTAL CODE: _____

PHONE: (____) _____ - _____ EMAIL: _____

3. TRUCK INFORMATION

YEAR: _____ MAKE: _____

MODEL: _____ BED LENGTH: _____

4. CAMPER INFORMATION

YEAR: _____ MAKE: _____ MODEL: _____

5. DEALER INFORMATION

PURCHASED FROM: _____

ADDRESS: _____

CITY: _____ STATE: _____ ZIP / POSTAL: _____

INSTALLED BY: _____ OWNER ABOVE DEALER ANOTHER DEALER

IF ANOTHER DEALER, WHO: _____