



C-40

QUICK GOOSE

Warning!! Brake, Fuel and Electrical lines may need to be loosened or repositioned to provide clearance for new hardware.

(Notes:)

The heat shields located above the rear axle and gas tank **must** be cut out or removed to install the Quick Goose. To ease installation on four wheel drive Dodge applications the fender liners can be removed and replaced when the process is complete.

Installing Quick Goose

- 1) Position the Quick Goose over the rear axle and up to the rear cross arm with the cylinder facing the front of vehicle. Place the four 5/8" x 1 3/4" carriage bolts into the Quick Goose first, then through the cross arm placing the 5/8" flange nut on the bolts finger tight. See figure 1
- 2) Move the front cross arm to the Quick Goose and place the 5/8" x 1 3/4" carriage bolts into the cross arm and then through the Quick Goose. Use the 5/8" flange nut to secure in place.
- 3) Torque all the 5/8" hardware to 150LBS.

Installing Ball

- 1) From the inside of pick-up bed place the chrome ball down into the cylinder. Place the chrome ring over the ball and screw the six 3mm allen head screws into the ring and cylinder.

Installing Handles

A notch must be cut in the fender wall between the bed supports to provide operating clearance for the Quick Goose rods. Replace fender liner if previously removed and cut away the section in front of the notch.

- 1) Insert the ball choker in the cylinder slot. See figure 2
- 2) Place the red handle through the fender wall notch and into the left side rod guides in the Quick Goose, Pushing it about 3/4 of the way to the cylinder. Use the spring provided and place it between the rod guide and the ball choker slowly slide the handle through the spring to stabilize it. Push the handle into choker and secure with 3/16" clevis and bowtie pin. **Apply the ball locked label on rod near a reference point in the fender well.**
- 3) Place the black handle through the fender wall notch and into the right rod guides pushing it all the way forward. Pull the pre-assembled linkage lever to the handle and place the 1/4" clevis pin into the holes of the handle and linkage lever. Use the bridge pin to secure in place.

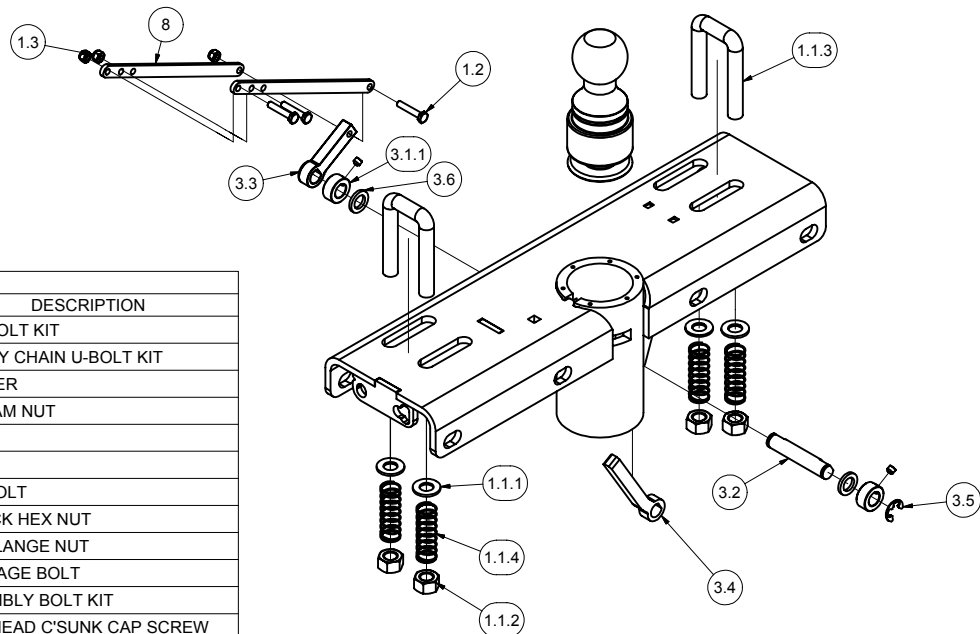
Installing U-Bolts

- 1) From inside the truck box place the two u-bolts through the pre-drilled holes in the bed of truck.
- 2) From under the vehicle place flatwashers, springs, and 5/8" jam nuts on each u-bolt.

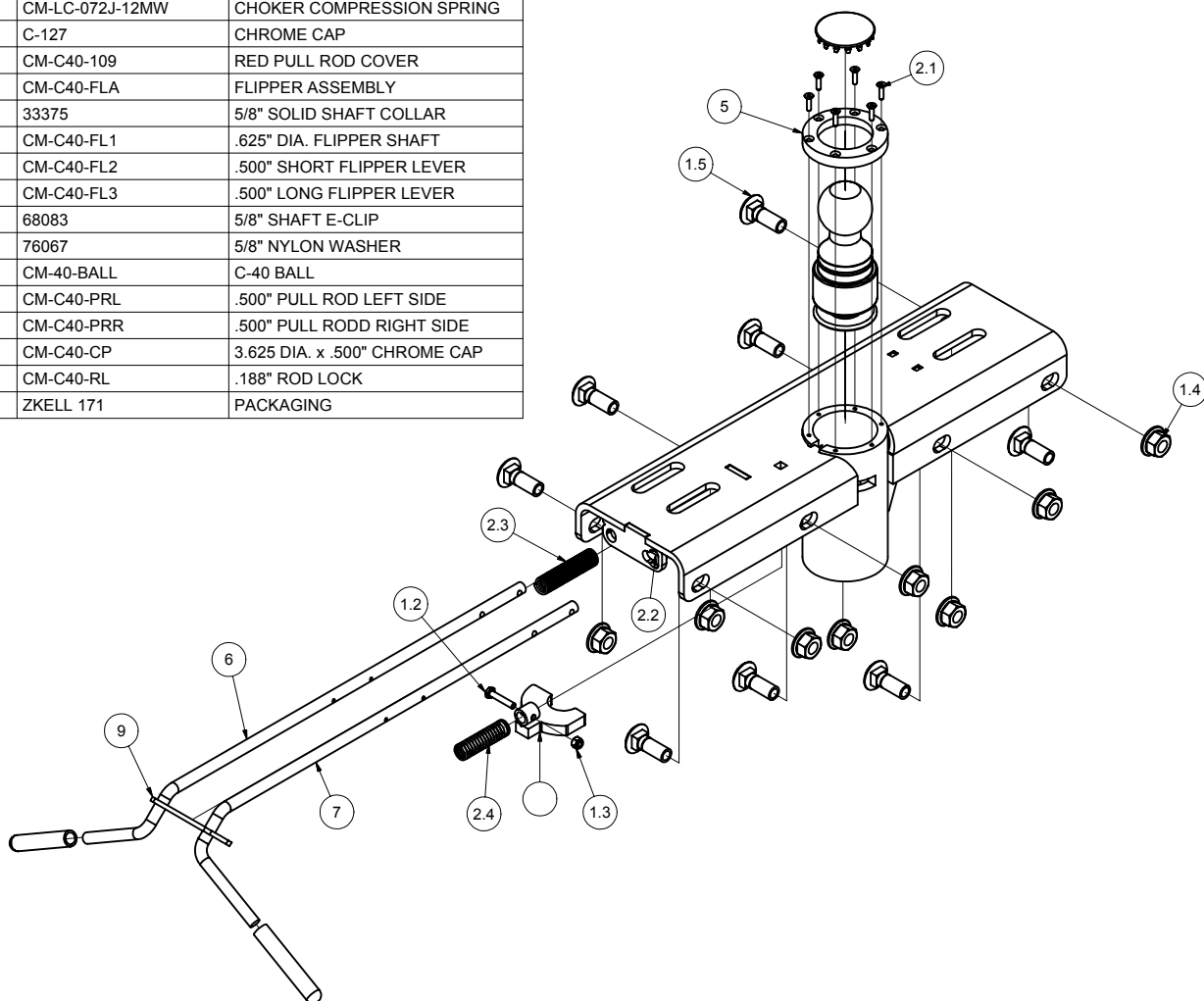
Caution!!!

- 1) Check that all 5/8" hardware has been torqued to 150LBS
- 2) Check that all hardware has been properly torqued. Some hardware listed may not apply to your application.
 - 3/8" to 30LBS
 - 1/2" to 75LBS
 - 5/8" to 150LBS
 - 3/4" to 250LBS
 - 1" to 250LBS

- 3) Check that all clevis and Bowtie pins are secure.
- 4) Attach any Brake, Fuel and Electrical wires so they do not contact any of the added fasteners.



Parts List			
ITEM	QTY	PART NUMBER	DESCRIPTION
1	1	CM-C30-BK	C-30 BOLT KIT
1.1	2	C-113	SAFETY CHAIN U-BOLT KIT
1.1.1	2	9/16"	WASHER
1.1.2	2	5/8-18	HEX JAM NUT
1.1.3	1	CM-C113-UB	
1.1.4	2	CM-C113-UBS	
1.2	1	1_4 - 20 x 1 3_8 HEX	HEX BOLT
1.3	1	1_4 - 20	NYLOCK HEX NUT
1.4	8	5/8-11	HEX FLANGE NUT
1.5	8	5/8-11 x 1 3/4	CARRIAGE BOLT
2	1	CM-C30-ABK	ASSEMBLY BOLT KIT
2.1	6	#10-32 x 3/4	FLAT HEAD C'SUNK CAP SCREW
2.2	1	64101	5/32 DIA. x 7/8" LG. ROLL PIN
2.8	1	CM-LE-093G-7MW	FLIPPER EXTENSION SPRING
2.4	1	CM-LC-072J-12MW	CHOKER COMPRESSION SPRING
2.5	1	C-127	CHROME CAP
2.7	1	CM-C40-109	RED PULL ROD COVER
3	1	CM-C40-FLA	FLIPPER ASSEMBLY
3.1	2	33375	5/8" SOLID SHAFT COLLAR
3.2	1	CM-C40-FL1	.625" DIA. FLIPPER SHAFT
3.3	1	CM-C40-FL2	.500" SHORT FLIPPER LEVER
3.4	1	CM-C40-FL3	.500" LONG FLIPPER LEVER
3.5	2	68083	5/8" SHAFT E-CLIP
3.6	2	76067	5/8" NYLON WASHER
4	1	CM-40-BALL	C-40 BALL
5	1	CM-C40-PRL	.500" PULL ROD LEFT SIDE
6	1	CM-C40-PRR	.500" PULL ROD RIGHT SIDE
7	1	CM-C40-CP	3.625 DIA. x .500" CHROME CAP
8	1	CM-C40-RL	.188" ROD LOCK
14	1	ZKELL 171	PACKAGING





C-40

QUICK GOOSE OWNERS MANUAL

C-40 OPERATION

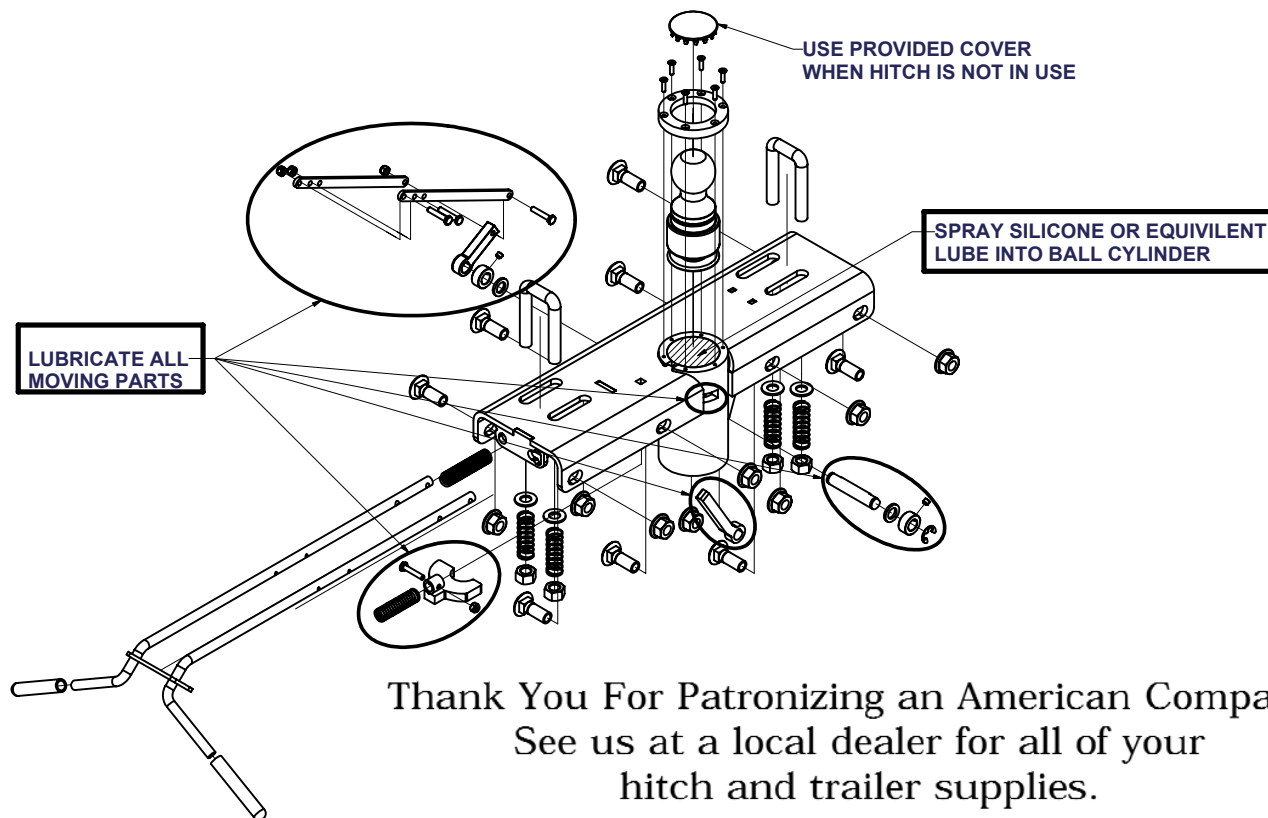
1. To raise ball into towing position, pull the red(right side) handle. (Be sure ball locked label on rod is at designated reference point)
2. Release the handle to lock the ball. (The ball is properly engaged when the inspection groove is visible above chrome ring)
3. To lower ball when not in use, pull the red handle and then the black handle. When the ball is completely down release the red handle to lock the ball down.

C-40 INSTALLATION CHECK

Raise the hitch ball into the up position with the locking plate engaged. Connect the trailer to the hitch ball. Check clearance. You should have about 6" clearance between bottom of the trailer overhang and top of the bed sides. Verify clearance between lower front of trailer and corner of bed or bumper and between the upper front corner of the trailer and rear of cab.

Maintenance

1. Keep hitch ball lubricated. Use silicone or equivalent spray to prevent wear and rust in cylinder.
2. Lubricate all moving parts once a month.
3. Keep hitch assembly free of dirt and other foreign matter. (Use cover provided when not in use)
4. Check tightness on **ALL** fasteners before each use.
5. Inspect ball and all moving parts for wear before each use. **Do not tow trailer with worn or damaged parts.**



Thank You For Patronizing an American Company.
See us at a local dealer for all of your
hitch and trailer supplies.

**MADE
IN THE
U.S.A.**



**PERIODICALLY CHECK THIS HITCH TO INSURE THAT ALL FASTNERS
ARE TIGHT AND THAT ALL STRUCTURAL COMPONENTS ARE SOUND.**

Curt Manufacturing Inc., warrants this product to be free of defects in material and/or workmanship at the time of retail purchase by the original purchaser. If the product is found to be defective, Curt Manufacturing Inc., may repair or replace the product, at their option, when the product is returned, prepaid, with proof of purchase. Alteration to, misuse of, or improper installation of this product voids the warranty. Curt Manufacturing Inc.'s liability is limited to repair or replacement of products found to be defective, and specifically excludes liability for incidental or consequential loss or damage.