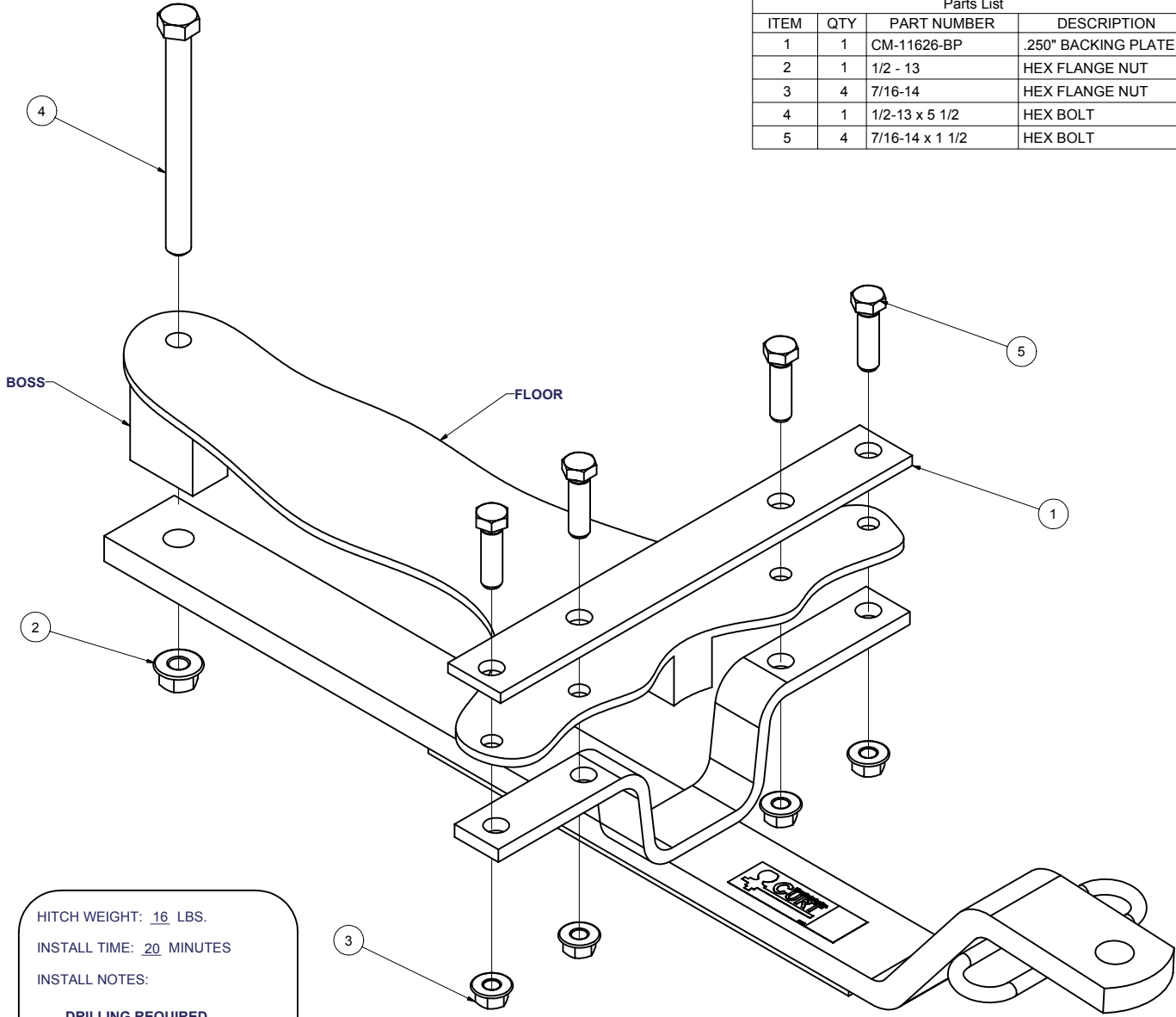




11626 SUZUKI SWIFT & CHEVY GEO METRO

GROSS LOAD CAPACITY WHEN USED AS A WEIGHT CARRYING HITCH: 1,000 LBS. TRAILER WEIGHT & 100 LBS. TONGUE WEIGHT.
*****DO NOT EXCEED VEHICLE MANUFACTURER'S RECOMMENDED TOWING CAPACITY.*****

Parts List			
ITEM	QTY	PART NUMBER	DESCRIPTION
1	1	CM-11626-BP	.250" BACKING PLATE
2	1	1/2 - 13	HEX FLANGE NUT
3	4	7/16-14	HEX FLANGE NUT
4	1	1/2-13 x 5 1/2	HEX BOLT
5	4	7/16-14 x 1 1/2	HEX BOLT



HITCH WEIGHT: 16 LBS.
INSTALL TIME: 20 MINUTES
INSTALL NOTES:
DRILLING REQUIRED

INSTALLATION STEPS

- 1) Hold the hitch centered under rear of car and notice how hitch mounts under boss at rear crossmember and floor of car. Clear inside of car's hatch area and drill out existing hole at bottom of boss.
- 2) Remove the two plastic plugs in floor of car. These are plugs that line up with outer holes in bracket of hitch. Mount the hitch on car at the boss using fasteners as shown. Position the hitch square on car with outer holes in bracket lined up with holes in floor of car. Drill the car floor for 7/16" bolts at inner bracket holes.
- 3) Mount the hitch to floor of car using backing plate and install fasteners as shown.
- 4) Torque all 1/2" fasteners to 75 lb.-ft. and all 7/16" fasteners to 50 lb.-ft.

PERIODICALLY CHECK THIS RECEIVER HITCH TO INSURE THAT ALL FASTENERS ARE TIGHT AND THAT ALL STRUCTURAL COMPONENTS ARE SOUND.

Curt Manufacturing Inc., warrants this product to be free of defects in material and/or workmanship at the time of retail purchase by the original purchaser. If the product is found to be defective, Curt Manufacturing Inc., may repair or replace the product, at their option, when the product is returned, prepaid, with proof of purchase. Alteration to, misuse of, or improper installation of this product voids the warranty. Curt Manufacturing Inc.'s liability is limited to repair or replacement of products found to be defective, and specifically excludes liability for incidental or consequential loss or damage.