

**Please read BOTH these Installation Instructions and the General Instructions before attempting to install or operate this equipment.**

- Blue Ox® towing products and accessories are intended to be installed by Blue Ox® Dealers who are familiar with our products and have the equipment necessary and knowledge to do "fit work". When necessary Blue Ox® Dealers can be found at [www.blueox.us](http://www.blueox.us) or by contacting our 24/7 Customer Care Department at (402) 385-3051 or toll free (888) 425-5382.
- Many Blue Ox® Baseplates are designed to use existing holes and hardware to mount the baseplate to the towed vehicle. Even though bolts are there, do not assume they are adequate for baseplate mounting. Always use hardware supplied in the hardware kit and existing hardware specified in the Baseplate Installation Instructions.

Attachment Tab Height: 25.5"  
Attachment Tab Width: 24"

**Bolt Torque Specifications**  
Torque in Foot-Pounds per Metric Bolts

Bolt Size	Grade 8.8	Grade 10.9
6MM	6	8
8MM	16	22
10MM	31	40
12MM	54	70
14MM	89	117

Confirm the towability and pre-towing procedures for your vehicle with the owner's manual or contact the vehicle's manufacturer for specific towing procedures. You can also contact REMCO for additional information at 1(800)228-2481.

**Bolt Torque Specifications**  
Torque in Foot-Pounds per Inch Bolts

Bolt Size	Grade 5	Grade 8
1/4"	10	14
5/16"	19	29
3/8"	33	47
7/16"	54	78
1/2"	78	119
5/8"	154	230



**! WARNING**

Failure to read and follow these instructions could result in separation of the towed vehicle from the tow bar, causing property damage, loss of towed vehicle, personal injury or death.

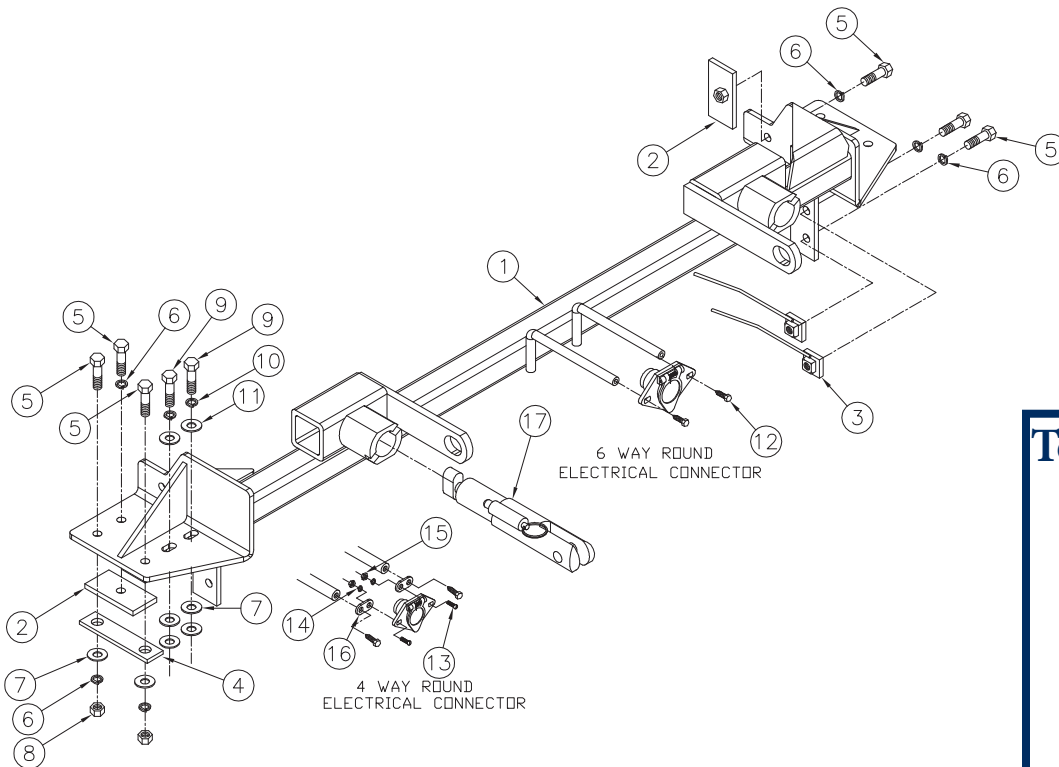
# BX1013

# 2004-05 Acura MDX

## Installation Instructions

### Parts List

Ref. No.	Qty.	Part #	Description
1	1	61-5981	WLDM'T, BASEPLATE, BX1013
2	4	61-5556	WLDM'T 3/8 NUT PLATE, W/ 12 IN WIRE
3	4	61-5208	WLD, NUT PLT, 1/4X1X1, 3/8"/14"WIRE
4	2	102-6682	BACKING, PLATE, BX1015
5	12	201-0440	3/8-16 X 1 1/2 HEX BOLT, GRD.5, ZP
6	8	203-0010	3/8 LOCK WASHER, ZP
7	12	203-0003	3/8 FLAT WASHER, ZP
8	4	202-0003	3/8-16 HEX NUT, ZP
9	4	201-0446	8MM-1.25 X 30MM HEX BOLT GRD.8.8 ZP
10	4	203-0102	8MM LOCK WASHER, ZP
11	4	203-0002	5/16 FLAT WASHER, ZP
12	2	201-0553	1/4-20 X 1/2 HX.WSHD.TYPE F TCS, ZP
13	2	201-0192	10-32 X 1/2 SLOT, RD. HD. SCREW
14	2	203-0054	#10 LOCK WASHER
15	2	202-0047	#10-32 HEX NUT
16	2	101-5822	ADAPTER, 4 WAY CONNECTOR
17	2	62-3468	ATT TAB ASSY, REM, SF/SB, 1 HOLE
	2	226-0046	BASEPLATE SAFETY CABLE, 36" CL III (NS)
	2	229-0359	QUICKLINK, 3/8, ZP (Not Shown)
	2	290-0437	RECEIVER, CAP PLUG (BLK) (Not Shown)



### Tools Required

- 8MM Socket
- 10MM Socket
- 12MM Socket
- 13MM Socket
- 13/32" Drill Bit
- Vise Grips
- LOCTITE Red

### Important:

Use only genuine factory replacement parts on your baseplate. Do NOT substitute homemade or non-typical parts. If a bolt is lost or in need of replacement, for your safety and the preservation of your baseplate, be sure to use a replacement bolt of the same grade (In most cases it will be Grade 5, please reference the parts list above). Replacement parts may be ordered through your nearest Blue Ox® Dealer or Distributor, or call our 24/7 Customer Care Team at (402)385-3051.

BX1013  
**2004-05 Acura MDX**  
Installation Instructions

## Removable Tabs:

Due to the design of the removable tabs, the RangeFinder II tow bar can not be used. Adapters, except the BX8833 and the BX88151, can not be used with this baseplate.

## Instructions:

The front fascia, headlights, and metal bumper are removed and reinstalled for baseplate installation. Drilling is required. Some models with fog lights may need to have the back side of the fog light housing trimmed.

The dimensional variations between otherwise identical vehicles can be considerable. While the baseplate was designed for easy installation, it may be necessary to tailor the baseplate slightly to compensate for auto manufacturer's tolerances. These minor adjustments may include filing a hole slightly, bending electrical rods, and/ or bending end plates.

The BX8869 Bulb and Socket Wiring Kit is recommended for this vehicle.

## Installation Instructions



1. Remove thirteen pushpins on the top side of the grill and two on the bottom of the fascia.



2. Use the 8MM socket to remove a bolt from inside the front wheel well on fascia's corner, just forward of the front tire. Set the bolts aside to be reinstalled later. Do this to both sides of the vehicle.

# BX1013

## 2004-05 Acura MDX

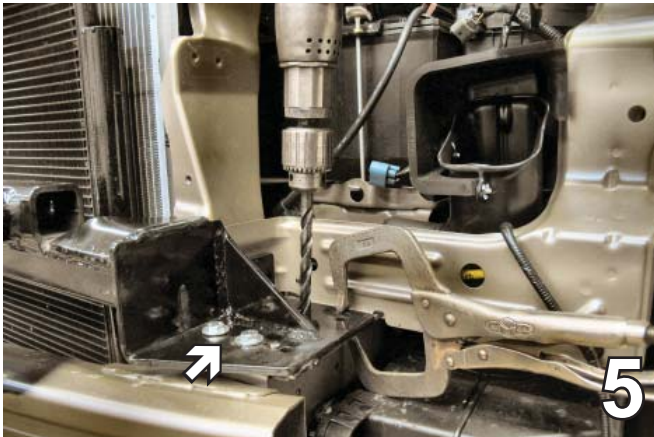
### Installation Instructions



3. Remove two bolts from the underside of fascia's edge, just forward of the front tire. Do this on both sides of the vehicle. Disconnect electrical appliances, pull fascia forward to remove, and set aside to be reinstalled later.



4. Using the 10MM socket, remove five metric bolts from headlight assembly, unplug and pull forward to release. Do this to both sides of the vehicle. Set bolts and assemblies aside to be reinstalled later.



5. Slide metal bumper back on to the frame rail, guiding the baseplate on top of frame rail. Align with the existing holes of the bumper bracket. Insert two 8MM-1.25 x 30MM hex bolts through the baseplate into the two existing bumper bracket holes using 5/16" lock washer and 5/16" flat washers (see arrow). Using a vice grip; clamp the rear of the baseplate. Using the baseplate as a template, drill into the frame rail through the remaining baseplate holes (six). Three are found on the top of the baseplate, another on the side resting against the radiator support. Two more are on the lower portion of the baseplate resting against the side of frame rail. Do this to both sides of the vehicle.

**BE SURE TO USE LOCTITE® RED ON ALL BOLTS BEFORE TIGHTENING. TIGHTEN ALL BOLTS ACCORDING TO THE TORQUE CHART ON THE FRONT PAGE OF THESE INSTRUCTIONS OR ON PAGE 3 OF THE BASEPLATE TOWING GENERAL INSTRUCTIONS.**

6. Using the 13MM socket, remove the two metric bolts on the top of the baseplate. Do this to both sides of the vehicle. Set the bolts, baseplate and metal bumper aside. Swivel the coolant line back to its original position and reinstall existing metric. Set the baseplate on the top of the frame to align with drilled holes.
7. Guide a 3/8-16 nut plate through the frame opening and align with bolt hole toward the rear of the baseplate, nearest the radiator support. Insert the 3/8-16 hex bolt into those bolt hole with the 3/8 lock washer and hand tighten. Do this on both sides of the vehicle.

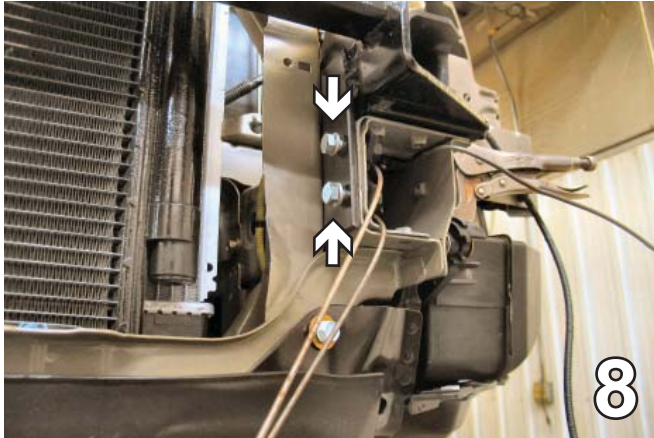
**Be sure to use LOCTITE Red on ALL bolts.**



# BX1013

## 2004-05 Acura MDX

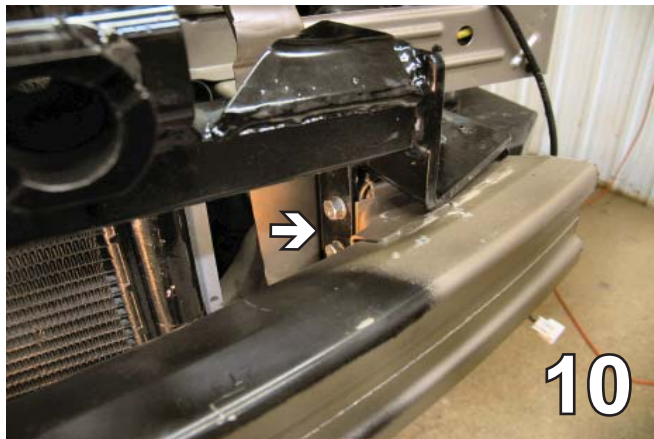
### Installation Instructions



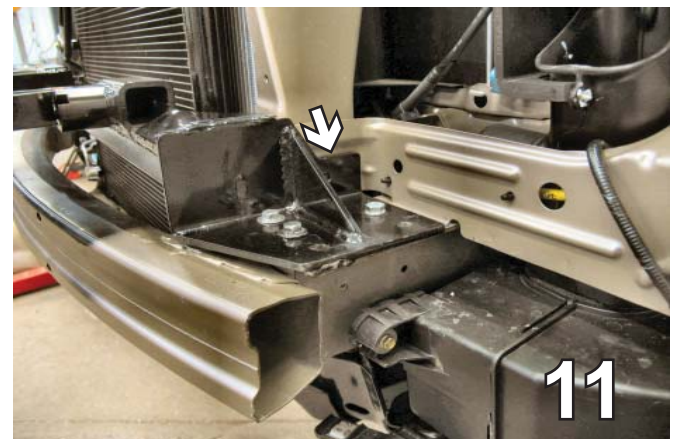
8. Insert the 3/8-16 hex bolts with the 3/8" lock washer through the baseplate holes on the side of the frame rail. Hand tighten bolts to the 3/8-16 nut plates placed on hex bolts through opening in frame end. Do this to both sides of the vehicle. Using diagonal cutters, cut all nut plate wires flush with the end of the frame. **Be sure to apply LOCTITE Red to ALL bolts.**



9. Slide bumper between frame and baseplate to align with existing mount locations. Place (2) 3/8" flat washers between the baseplate and the top of the metal bumper. Insert two 8MM-1.25 x 30MM hex bolts with 5/16" lock washers and 5/16" flat washers and tighten. Tighten the bolt near the back of the baseplate, as indicated by the white arrow in the photo above. Do this to both sides of the vehicle.



10. Tighten the bolts on the lower portion of the baseplate and all installed bolts in the top of the frame. Do this to both sides of the vehicle.



11. Align the nut plate with the drilled hole on the back side of the radiator support and tighten the 3/8-16 hex bolt and lock washer, as indicated by the white arrow in the photo. Do this to both sides of the vehicle. Some models: (Using the 10MM socket, remove the metric bolt from the air baffle and pull the air baffle down away from the frame.)

BX1013  
**2004-05 Acura MDX**  
Installation Instructions



12. Place the backing plate on the bottom side of the frame webbing to align with drilled holes, insert the 3/8-16 x 1 1/2" hex bolts and 3/8" flat washers into this hole, tighten the 3/8-16 hex nuts and 3/8" lock washers. Reinstall the air baffle to its original position.

Reinstall headlight assemblies, and fascia. Be sure to install all pushpins and bolts.

Baseplate Installation is now Complete.

Install the tow bar and safety cables according to their instructions. When demonstrating this to the customer, be sure to include all of the Blue Ox packaging and contents.



13. Place the backing plate on the bottom side of the frame webbing to align with drilled holes, insert the 3/8-16 x 1 1/2" hex bolts and 3/8" flat washer into this hole, tighten the 3/8-16 hex nut and 3/8" lock washers.

**Be sure that ALL electrical connections are plugged in properly and functioning BEFORE Installing the fascia.**

**DEALER OR INSTALLER:**

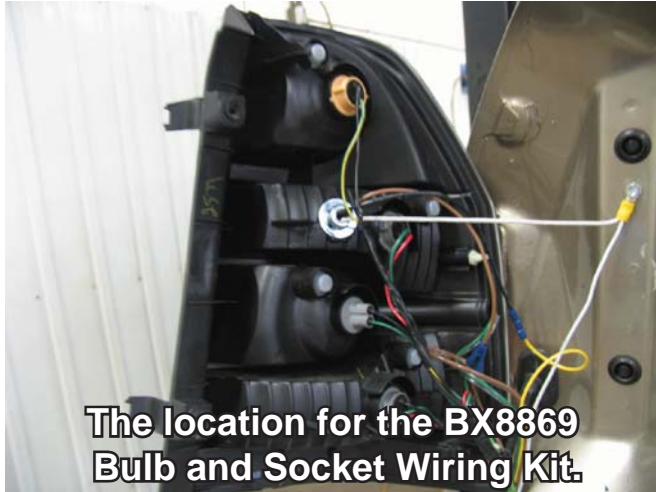
**Be certain the user receives the instruction sheets for their products.**



# BX1013

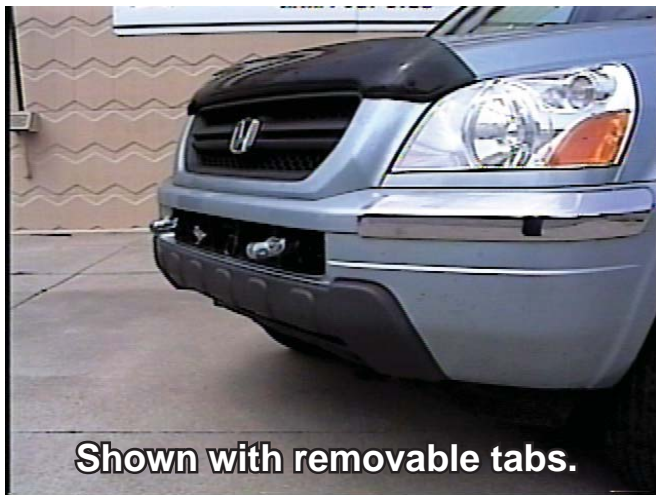
## 2004-05 Acura MDX

### Installation Instructions



### Customer Service Commitment

Blue Ox® is focused on providing exemplary customer service, as observed in our mission statement and guiding principles. In accordance with this objective, Blue Ox® is proud to provide services such as repairs and general maintenance of Blue Ox® products at over 150 RV Rallies. Look for our Destination America or Blue Ox® Racing service crews at the next rally or race that you attend. If you were not present, you will find an informative, personalized note explaining any services that may have been performed to your Blue Ox® products.



Blue Ox® also offers educational seminars at rallies and through our Parks and Resort teams. In addition, Blue Ox® customers visiting our factory may take advantage of the well-equipped Blue Ox® RV park at no charge to you, our valued and appreciated customer.



© 2005 Blue Ox  
One Mill Road, Industrial Park  
Pender, Nebraska 68047  
Phone: (402) 385-3051  
Toll Free: (888) 425-5382  
Fax: (402) 385-3360  
www.blueox.us  
7/14/08