



BX3814 Installation Instructions 1995 Volkswagen Jetta

Note for diesels with a pre-cooler: The pre-cooler needs to be loosened before sliding the baseplate into place. The baseplate will then sit above the pre-cooler hose. The plastic belly guard also needs to be removed and then trimmed when it is replaced.

1. Read the General Instruction Sheet included with this baseplate.
2. The baseplate mounts to the frame of the vehicle and to the bumper mounts using twelve bolts, all of which are provided with the baseplate.
3. The front bumper will need to be completely removed. Begin by removing the two plastic splash guards under the bumper. Each will have four screws to be removed. There will also be two horizontal, plastic panel fasteners on each side in front of the tires that can be removed with a flat screwdriver and a pair of pliers.
4. Raise the hood and notice the four long, vertical Phillips head screws at the front, above the bumper. Remove these screws. The grill with the "VW" emblem can now be removed by squeezing the plastic inserts at the top of the grill and pulling out.
5. Remove the long tin strip that runs the width of the car underneath the headlights, by prying on the plastic inserts on the bottom of each end and pulling out.
6. Notice the three bolts that were underneath the strip that attach the plastic bumper to the car. Remove these three bolts. There are also four similar bolts on the top of the horizontal opening in the lower part of the bumper. Remove these also. Pull straight forward and remove the bumper from the vehicle. Also remove the styrofoam bumper and lay it aside.
7. With an assistant, hold the baseplate up underneath the car. The tube of the baseplate should be below and a little ahead of the radiator. Line up the 3/4" holes in the outer supports of the baseplate with the 3/4" holes in the vehicle frame. Notice that the back slots on the outer supports line up with a bolt behind and approximately three inches above the 3/4" hole.
8. Set the baseplate aside and remove these two bolts. These bolts will not be used again. Apply Loctite to the threads of the 10MM x 100MM bolts and place a 10MM flat and lock washer against the bolt heads. Place the round spacers on top of the slots and start the bolts through the slot and the spacers. With help, hold the baseplate up and start these bolts. Do not tighten yet.
9. Apply Loctite to the threads of the 3/4" x 1 3/4" bolts and start them up through the large holes in the outer supports and through the vehicle frame. Start the 3/4 whiz nuts and snug. Snug up the 10MM bolts started in step 8.
10. The remaining hole in the outer supports should line up with a narrow lip on the frame. Use the baseplate as a template and drill through the frame with a 13/32" bit. These holes can also be marked with a 13/32" transfer punch and drilled after the baseplate has been removed. The holes in the two center supports should line up with a narrow horizontal tube in the vehicle frame. These two holes can be drilled out as described above.

Automatic

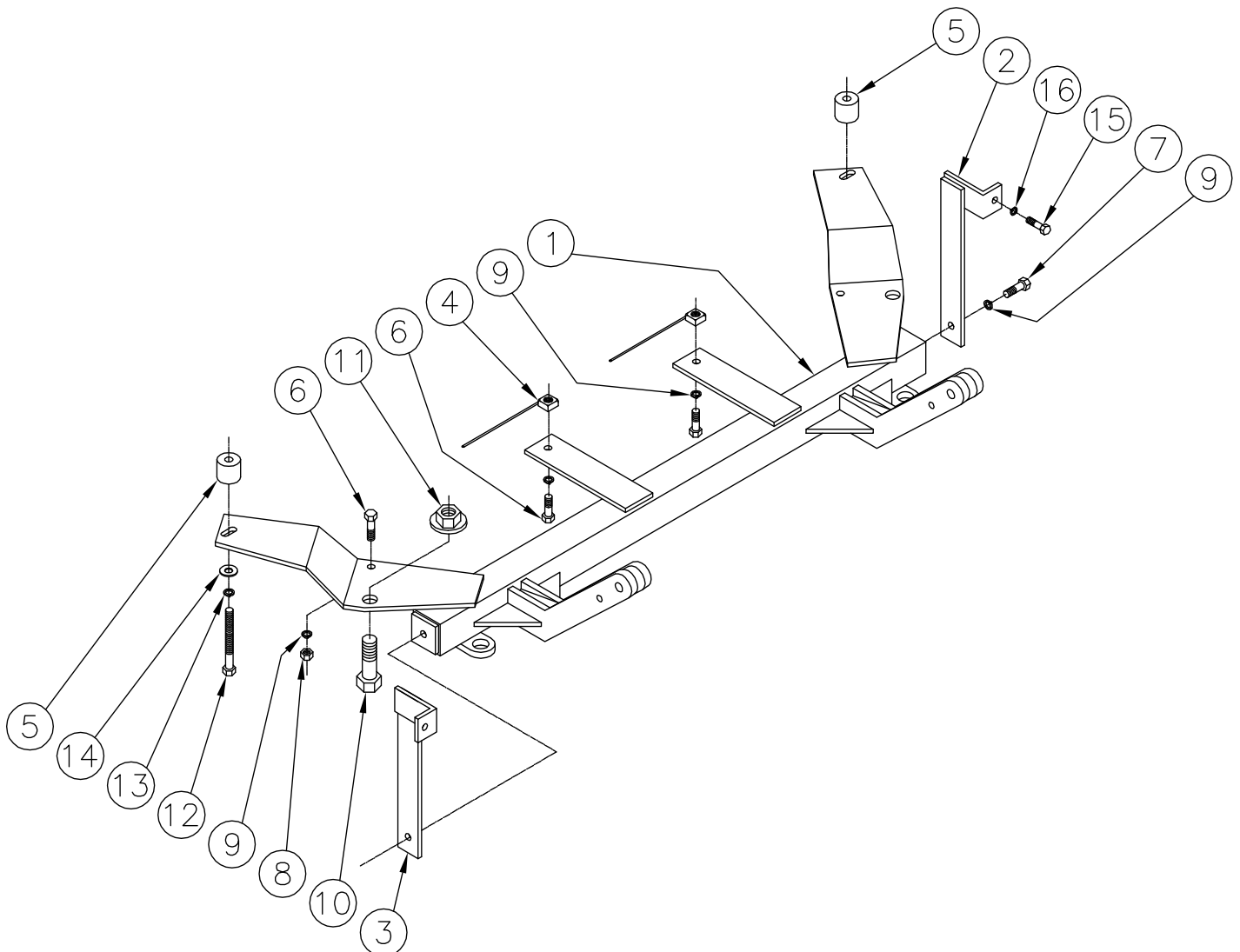
11. Place a 3/8" lock washer on a 3/8" x 1" bolt, and apply Loctite to the threads. Start the 3/8" nut wire through the long narrow slots next to the just drilled holes for the center supports. Bend the wire so the nut lies flat over the hole. A small amount of weld may need to be filed or ground off of the nut to allow access through the slot. Start the bolt into the nut but do not tighten. Repeat for the other center support.
12. Apply Loctite to the threads of the remaining two 3/8" x 1" bolts. Start the bolts through the drilled holes in the frame and down through the remaining outer support holes. Start a 3/8" lock washer and nut on the bolt but do not tighten.
13. Notice that the metal bumper is attached on each end with two bolts. Remove the inside bolt of each pair. These bolts will not be used again. The front supports can now be attached to the vehicle and baseplate. Position the support so that the hole in the bent bracket on the support lies over the hole in the bumper mount bracket, while the hole in the bottom of the support lies over the hole in the end of the baseplate tube. The support should go back through the metal bumper and down to the tube. Apply Loctite to the threads of a 8MM x 30MM bolt, start a 8mm lock washer, and start the bolt through the support and thread into the bumper mount. Place a 3/8" lock washer on a 3/8" x 1 1/4" bolt, apply Loctite, and start the bolt through the support and into the tube cap. Repeat for the other side. It may be necessary to loosen the 10MM and 3/4" bolts that were snugged in step 9 to start these bolts. After all bolts have been started, all twelve may be fully tightened.
14. The dimensional variations between otherwise identical cars can be considerable. While the location and size of the holes in the baseplate were designed to allow for easy installation, it may be necessary to file a hole slightly to allow a bolt to clear.
15. The bumper can now be reinstalled. Begin by repositioning the styrofoam bumper. The narrow black plastic piece that runs on the bottom of the bumper will need to be trimmed around the attachment tabs. Remove this piece by prying down on the plastic inserts on the piece that runs the length of the bumper and pull out. Once both halves of this strip have been removed, place the bumper back into position on the car. Hold each black piece up to the bumper and mark where the vertical slots need to be cut out around the attachment tabs. Each slot will be approximately 1 1/2 inches wide and 2 inches deep. Once each piece has been trimmed, it may be reattached to the bumper.
16. Secure the bumper with the seven bolts removed in step 6. Reattach the plastic splash guards with the four screws and two panel fasteners. Each splash guard will need to be trimmed slightly at the front. Cut a slot in the splash guard approximately two inches by three inches around the end of the baseplate tube. Reattach the tin strip under the headlights as well as the grill with the four Phillips head screws.
17. Install the tow bar and safety cables according to the instructions included in their packages.
18. Do not substitute other devices if the tow bar pin and clip are lost.
19. DEALER OR INSTALLER: BE CERTAIN THE USER RECEIVES THE INSTRUCTION SHEET.

Tools Required

1 1/8" Socket	1 1/8" Socket	Drill
13/32" Bit	Phillips Screwdriver	Flat Screwdriver
10MM Socket	19MM Socket	7MM Socket
13MM Socket	Utility Knife	Pliers
13/32" Transfer Punch	Loctite Blue	Center Punch
9/16" Socket	17MM Socket	11MM Socket

Parts List

Ref. No.	Qty.	Part No.	Description
1	1	61-4471	Weldment, Baseplate, BX3814
2	1	61-4472	Weldment, Front Support, DS, BX3814
3	1	61-4473	Weldment, Front Support, PS, BX3814
4	2	61-4902	Weldment, 3/8 Nut Wire
5	2	104-0469	1 1/4 x 1 1/8 Spacer
6	4	201-0443	3/8-16 x 1 Hex Bolt, Grd 5, ZP
7	2	201-0368	3/8-16 x 1 1/4 Hex Bolt, Grd 5, ZP
8	2	202-0003	3/8-16 Hex Nut, ZP
9	6	203-0010	3/8 Lock Washer, ZP
10	2	201-0514	3/4-10 x 1 3/4 Hex Bolt, Grd 5, ZP
11	2	202-0074	3/4-10 Hex Whiz Nut, ZP
12	2	201-0417	10MM-1.5 x 100MM Hex Bolt, Grd 8.8, ZP
13	2	203-0104	10MM Lock Washer, ZP
14	2	203-0103	10MM Flat Washer, ZP
15	2	201-0446	8MM-1.25 x 30MM Hex Bolt, Grd 8.8, ZP
16	2	203-0102	8MM Lock Washer, ZP



General Information

1. Ensure that your product(s) are registered online at www.blueox.com. It is crucial to register your product(s) so that you may be alerted of product offerings, updates, upgrades, maintenance and safety bulletins, and/or recalls.
2. **It is the owner's responsibility to inspect all towing equipment for cracked welds, missing or worn parts and loose bolts before each towing trip.** Be sure to use Loctite® Red on all bolts and tighten to the recommended specifications.
3. **It is the owner's responsibility to hook up all towing equipment per manufacturer's instructions/ recommendations.**
4. Remove the attachment tabs when not in use (if applicable).

Notice To Baseplate Installer

1. **It is YOUR responsibility to watch for:**

- Oil cooler and air conditioner lines
- Electrical wires and hoses
- Missing parts or attaching points on the frame

**** If the baseplate is improperly installed and is against a wire or hose, it could cause fluid leaks or electrical shorts some time after the actual baseplate installation.**

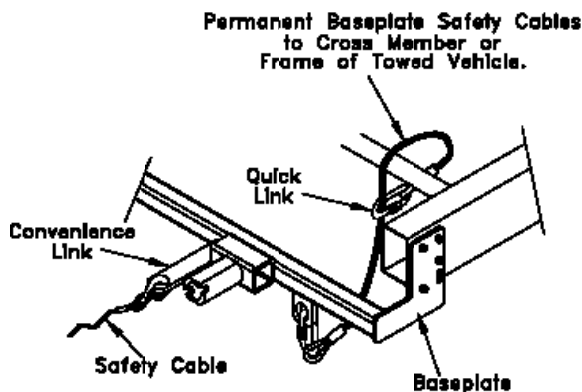
Permanent Baseplate Safety Cable Installation

Permanent baseplate safety cables are strongly recommended when towing a vehicle with a tow bar. The principle function of the permanent baseplate safety cables is to prevent the towed vehicle from breaking loose in the event the connection between the frame of the towed vehicle and the baseplate fails or becomes disconnected. The cables must be connected from the baseplate to the frame rail or cross member of the vehicle's frame. The illustrations below show the possible arrangements recommended by Blue Ox®. Each permanent baseplate safety cable must have an adequate weight rating for the towing system. The weight rating of the two (2) cables together will not qualify.

Do not mount the permanent baseplate safety cables against wires, hoses or brake lines.

These permanent baseplate safety cables should remain installed as long as the baseplate is installed on the vehicle. Permanent baseplate safety cables are to be used in conjunction with, and NOT a replacement for legally required safety cables attaching the towed vehicle to the towing vehicle.

OPTION #1



OPTION #2

