



BX3807 Installation Instructions
1985-90 VW Golf
1985-90 VW Jetta

1. Read the General Instruction Sheet included with this baseplate.
2. The baseplate mounts to the front underside of the car using ten bolts which are provided.
3. Remove the two round plastic caps located on the body trim panel below the bumper and just in front of the air dam. This will give you access to the engine support cross brace bolts and the baseplate posts are installed through these holes.
4. Place a jack under the engine support cross brace and raise it enough to hold the cross brace in place when the four bolts securing it to the frame are removed.
5. Remove the bolts and discard them as they will be replaced by the 10mm-1.5 x 80mm bolts which are provided.
6. Install the two baseplate sockets so that the large end is forward and the small tubes fit into the metal core of the rubber bushings in the cross brace. Loosely secure with the 10mm-1.5 x 80mm bolts.
7. Install the baseplate by inserting the posts on each end through the holes in the trim panel and into the sockets previously installed. In order to prevent binding, insert each side slightly and work each side up a little at a time alternating from side to side.
8. When the post are inserted completely into the sockets, loosely install the 3/8-16 x 1 bolts and lock washers which are provided.
9. Loosely install the two tie down loop clamps as shown. On some 1989 models the tie down loop is a flat stamped bracket. In this case, use a spacer washer between the tie down loop and the clamp as shown.
10. When all bolts align, apply Loctite and tighten.
11. The dimensional variations between otherwise identical cars can be considerable. While the location and size of the holes in the baseplate were designed to allow easy installation, it may be necessary to file a hole slightly to allow a bolt to clear.
12. Install the tow bar and safety cables according to the instructions included in their packages.
13. Do not substitute other devices if the tow bar pin and clip are lost.
14. **DEALERS AND INSTALLERS: BE CERTAIN THE USER RECEIVES THE INSTRUCTION SHEET.**

Automatic

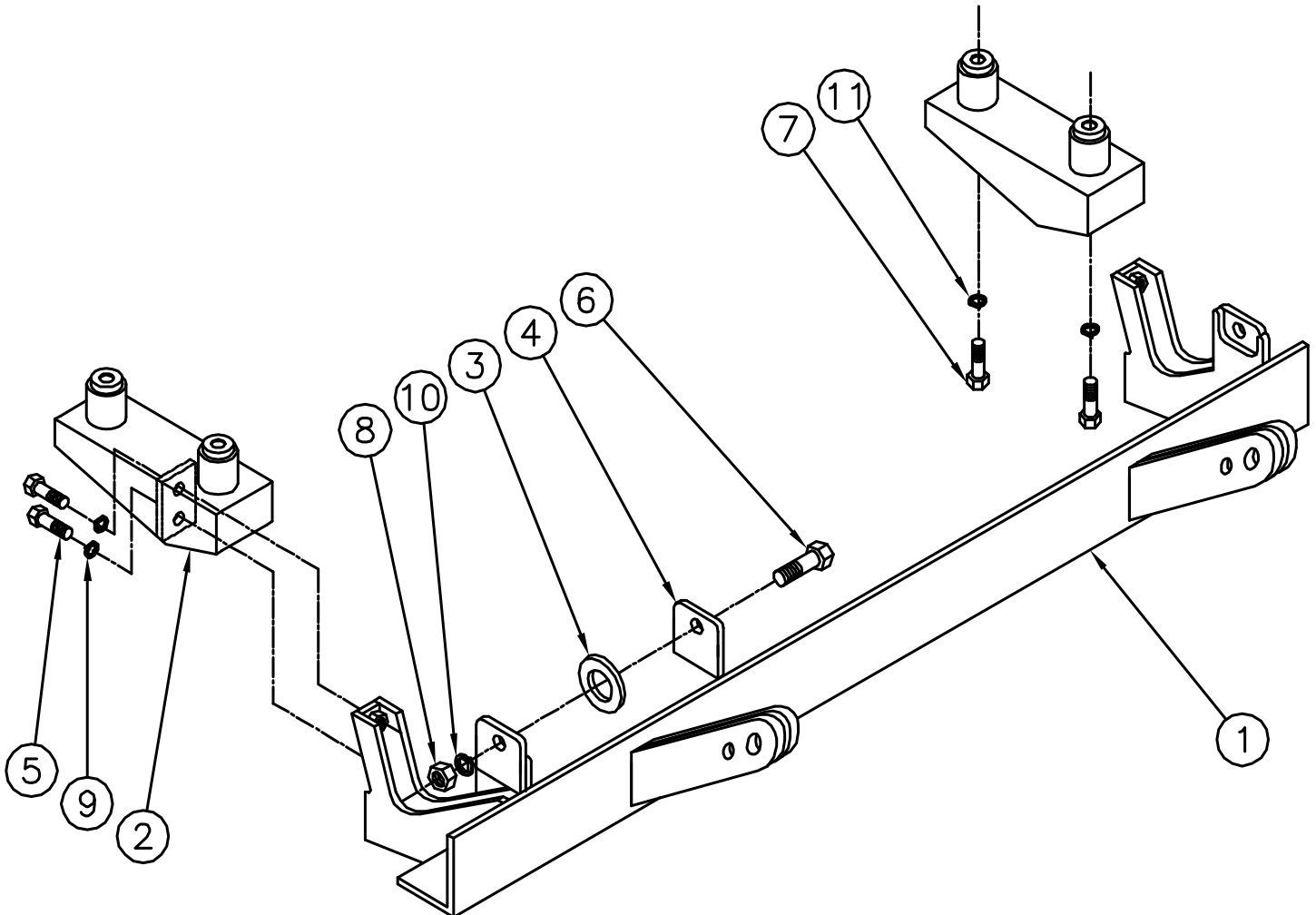
Tools Required

17mm socket	3/4 socket	9/16 socket
3/4 open end wrench	6" minimum socket ext.	Jack

Parts List

Ref. No.	Qty.	Part No.	Description
1	1	61-3469	Main Baseplate Assembly
2	2	61-3470	Socket Plate
3	2	102-2700	Filler Washer
4	2	102-2978	Tie Down Clamp
5	4	201-0443	3/8-16 x 1 Hex Bolt
6	2	201-0051	1/2-13 x 1 1/2 Hex Bolt
7	4	201-0429	10mm-1.5 x 80mm Hex Bolt
8	2	202-0005	1/2-13 Hex Nut
9	4	203-0010	3/8 Lock Washer
10	2	203-0012	1/2 Lock Washer
11	4	203-0104	10mm Lock Washer

NOTE: Item #3 is not used in all installations. See step #9.



General Information

1. Ensure that your product(s) are registered online at www.blueox.com. It is crucial to register your product(s) so that you may be alerted of product offerings, updates, upgrades, maintenance and safety bulletins, and/or recalls.
2. **It is the owner's responsibility to inspect all towing equipment for cracked welds, missing or worn parts and loose bolts before each towing trip.** Be sure to use Loctite® Red on all bolts and tighten to the recommended specifications.
3. **It is the owner's responsibility to hook up all towing equipment per manufacturer's instructions/recommendations.**
4. Remove the attachment tabs when not in use (if applicable).

Notice To Baseplate Installer

1. It is YOUR responsibility to watch for:

- Oil cooler and air conditioner lines
- Electrical wires and hoses
- Missing parts or attaching points on the frame

** If the baseplate is improperly installed and is against a wire or hose, it could cause fluid leaks or electrical shorts some time after the actual baseplate installation.

Permanent Baseplate Safety Cable Installation

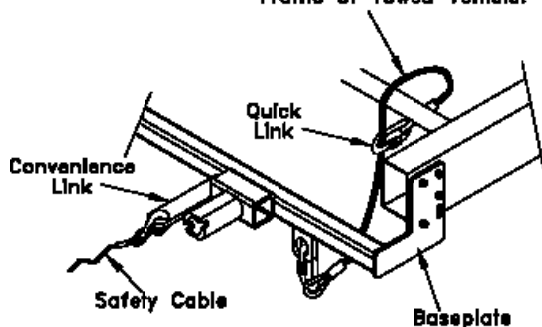
Permanent baseplate safety cables are strongly recommended when towing a vehicle with a tow bar. The principle function of the permanent baseplate safety cables is to prevent the towed vehicle from breaking loose in the event the connection between the frame of the towed vehicle and the baseplate fails or becomes disconnected. The cables must be connected from the baseplate to the frame rail or cross member of the vehicle's frame. The illustrations below show the possible arrangements recommended by Blue Ox®. Each permanent baseplate safety cable must have an adequate weight rating for the towing system. The weight rating of the two (2) cables together will not qualify.

Do not mount the permanent baseplate safety cables against wires, hoses or brake lines.

These permanent baseplate safety cables should remain installed as long as the baseplate is installed on the vehicle. Permanent baseplate safety cables are to be used in conjunction with, and NOT a replacement for legally required safety cables attaching the towed vehicle to the towing vehicle.

OPTION #1

Permanent Baseplate Safety Cables to Cross Member or Frame of Towed Vehicle.



OPTION #2

Permanent Baseplate Safety Cables to Cross Member or Frame of Towed Vehicle.

