



BX3772 2010 Lexus LX570 Installation Instructions

Serial Number

Please read **BOTH** the Installation Instructions and the General Towing Instructions before attempting to install or operate this equipment.

1. Blue Ox® towing products and accessories are intended to be installed by Blue Ox® Dealers who are familiar with our products and have the equipment and knowledge to do “fit work.” When necessary, Blue Ox® Dealers can be found at www.blueox.com or by contacting our Customer Care Department at (402) 385-3051.

2. Many Blue Ox® Baseplates are designed to use existing holes and hardware to mount the baseplate to the towed vehicle. Even though bolts are there, do not assume they are adequate for baseplate mounting. Always use hardware supplied in the hardware kit or existing hardware specified in the Baseplate Towing Installation Instructions.

Attachment Tab Height: 12 3/4”
Attachment Tab Width: 32 1/2”

Bolt Torque Specifications
Torque in Foot-Pounds for Metric Bolts

Bolt Size	Grade 8.8	Grade 10.9
6MM	6	8
8MM	16	22
10MM	31	40
12MM	54	70
14MM	89	117

Confirm the towability and pre-towing procedures for your vehicle with the owner’s manual or contact the vehicle’s manufacturer for specific towing procedures.

Bolt Torque Specifications
Torque in Foot-Pounds for Inch Bolts

Bolt Size	Grade 5	Grade 8
1/4”	10	14
5/16”	19	29
3/8”	33	47
7/16”	54	78
1/2”	78	119
5/8”	154	230



! **WARNING**

Failure to read and follow these instructions could result in separation of the towed vehicle from the tow bar, causing property damage, loss of towed vehicle, personal injury or death.



BLUE OX®

BX3772

2010 Lexus LX570

Installation Instructions

Parts List

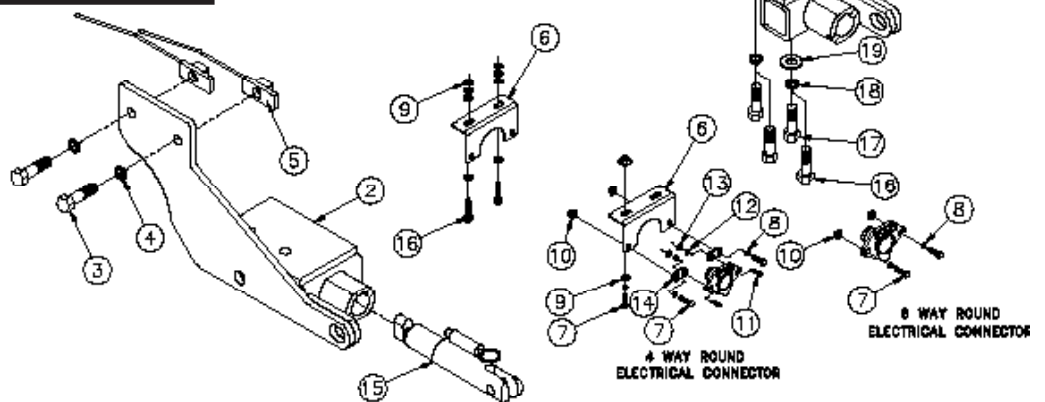
Ref. No.	Qty.	Part #	Description
1	1	61-6361	Weldment, Baseplate, DS, BX3772
2	1	61-6362	Weldment, Baseplate, PS, BX3772
3	4	201-0283	1/2-13 x 2" Hex Bolt, Grd. 5, ZP
4	4	203-0012	1/2" Lock Washer, ZP
5	4	61-4604	Weldment, 1/2" Nut Plate, w/10" Wire
6	1	101-6135	Electrical Bracket, 90 Degrees
7	4	201-0569	1/4-20 x 3/4" Hex Bolt, Grd. 5, ZP
8	4	203-0008	1/4" Lock Washer, ZP
9	8	203-0001	1/4" Flat Washer, ZP
10	4	202-0069	1/4-20 Hex Flange Whiz Lock Nut, ZP
11	2	201-0192	#10-32 x 1/2" Slot, RD. HD. Screw
12	2	203-0054	#10 Lock Washer
13	2	202-0047	#10-32 Hex Nut
14	2	101-5822	Adapter, 4 Way Connector
15	2	62-3468	Attachment, Assembly, SF/SB (R)
16	4	201-0669	12MM-1.75x40MM Hex Bolt Grd. 8.8, ZP
17	4	201-0604	12MM-1.25 X 35MM HH BOLT, GRD. 8.8
18	4	203-0105	12MM Lock Washer, ZP
19	2	203-0112	12MM Flat Washer, ZP
	2	290-0437	Cap Plug, Black (Not Shown)
	2	229-0359	Quicklink, 3/8", ZP (Not Shown)
	2	226-0046	Baseplate Sfty Cble, 36" Class III (Not Shown)
	2	201-0654	#10-16 X 1 Self Drilling Screw (Not Shown)

Tools Required

10MM Socket	Drill
12MM Socket	Fat Screw Driver
17MM Socket	Utility Knife
7/16" Socket/Wrench	Pliers
3/4" Socket	17/32" Drill Bit
T30 Torx	Loctite® RED

NOTE:

Use part numbers 16,17,18 for installation of baseplate, if tow hooks are not provided with your vehicle.



Important:

Use only genuine factory replacement parts on your baseplate. Do NOT substitute homemade or non-typical parts. If a bolt is lost or in need of replacement, for your safety and the preservation of your baseplate, be sure to use a replacement bolt of the same grade (In most cases it will be Grade 5, please reference the parts list above). Replacement parts may be ordered through your nearest Blue Ox Dealer or Distributor. Failing to follow and/or altering these installation instructions in either installation or required equipment will void the manufacturer's warranty. Towing behind a non-motorized vehicle will void the warranty.



BX3772 2010 Lexus LX570 Installation Instructions

Removable Tabs:

The weight of this vehicle is near the Class III, 5,000 lbs. rating limitations. Some models, depending on options, may well exceed this 5,000 lb. rating. Be sure to confirm the weight of your individual vehicle before towing. As of 1999 the Aventa® II is now rated 10,000 lbs. and either the Aventa® II or the Aventa® LX tow bar must be used for these applications.

Tow Bar Adapters are NOT to be used with vehicle's weighing over 5,000 lbs.

Instructions:

Drilling is required.

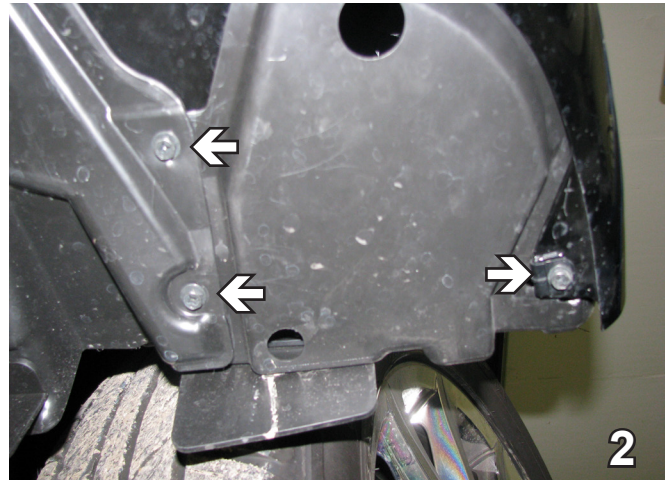
The dimensional variations between otherwise identical vehicles can be considerable. While the baseplate was designed for easy installation, it may be necessary to tailor the baseplate slightly to compensate for auto manufacturer's tolerances. These minor adjustments may include filing a hole slightly, bending electrical rods or bending end plates.

The BX8869 Bulb and Socket Wiring Kit is recommended for this vehicle.

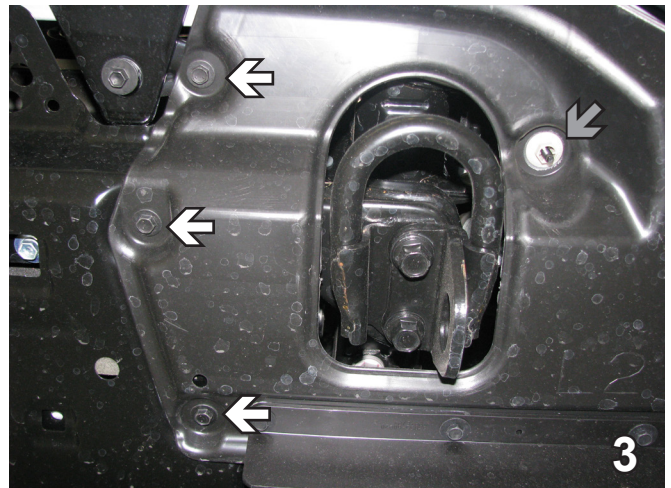
Installation Instructions:



1. **LEXUS:** Using a 30T torx, remove the three bolts just forward of the front tire. Do this on both sides. Set the bolts aside to be reinstalled later.

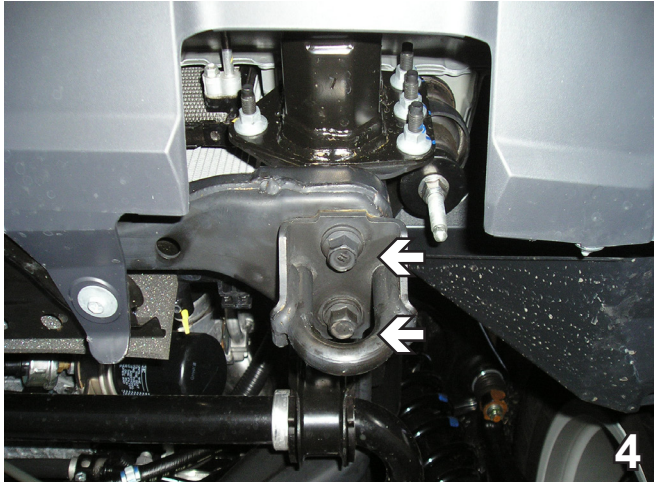


2. **LEXUS:** Underneath the vehicle, using a 10MM socket remove three bolts. One in the corner and two in front of the tire. Do this on both sides. Set bolts aside to be reinstalled later.

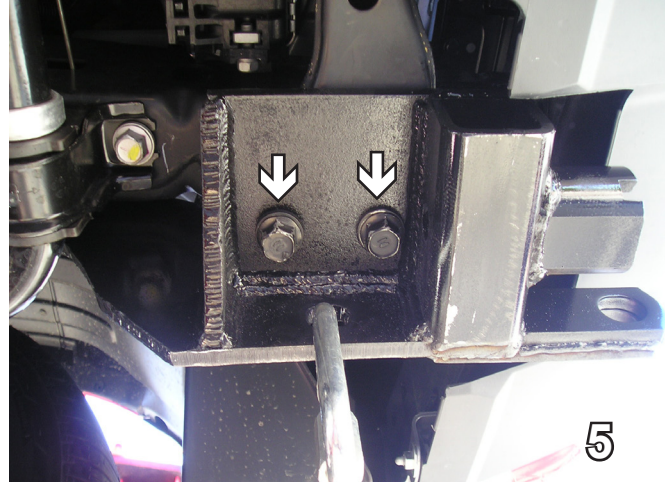


3. **LEXUS:** Using a pliers, remove the plastic nut (gray arrow). Using a 10MM socket, remove three more bolts (white arrows) underneath the vehicle. Do this on both sides. Set the bolts and the cover aside to be reinstalled later.

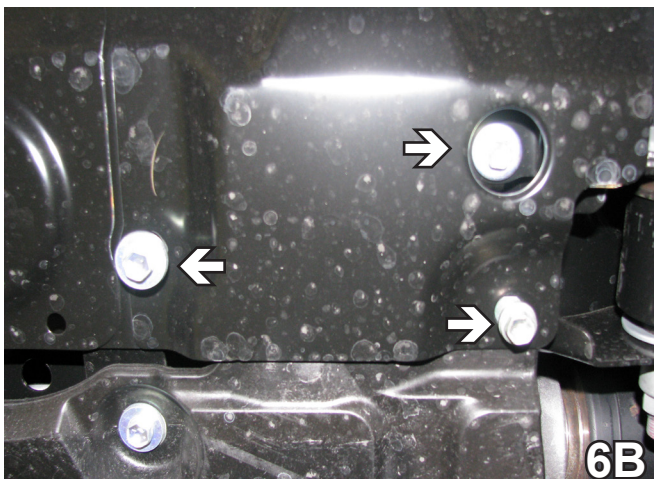
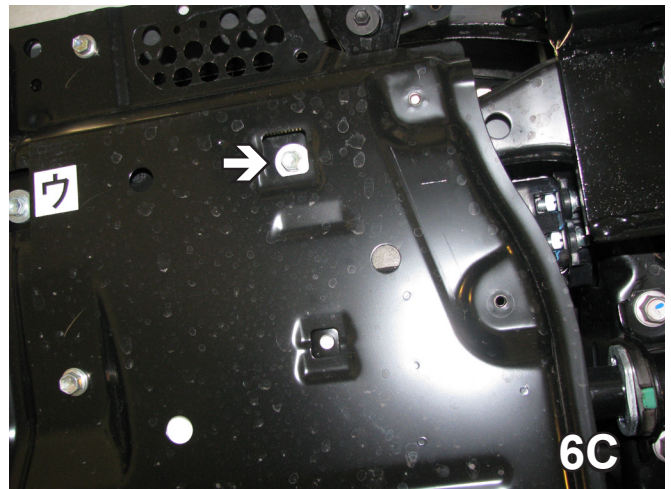
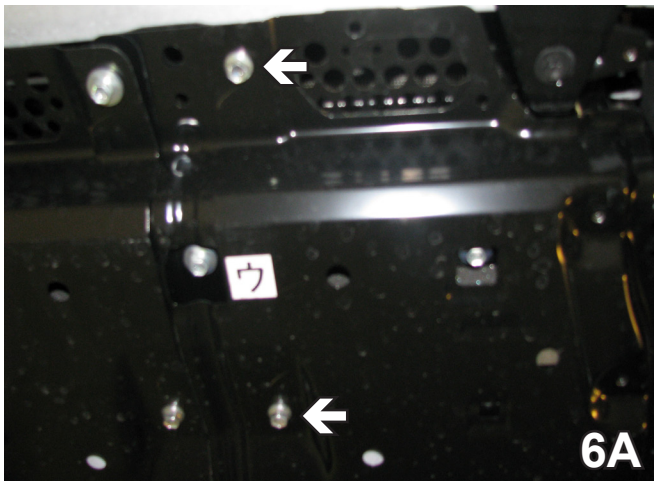
Handling of some cosmetic parts when installing this product may require the use of protective covers, rags, specialty tools, etc. to prevent damage.



4. Using a 17MM socket, remove two metric bolts from the bottom side of the tow hook. Do this to both sides of the vehicle. Factory two hooks will not be reinstalled.



5. Align base plate with the existing holes for the tow hooks and insert the two existing bolts removed from the tow hooks. Those two bolts should be snug but not completely tight before moving to the bolts on the side. Do this to both sides of the vehicle. Some models may require 12MM-1.75 x 40MM or 12MM-1.25 x 35MM hex bolts.

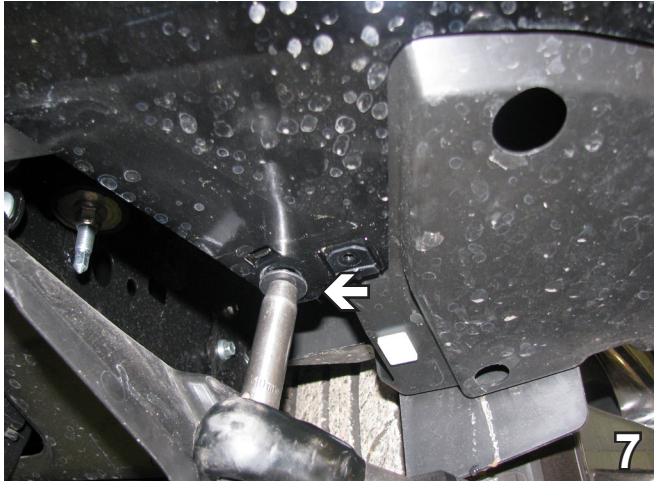


6. **LEXUS:** Using the 12MM socket, remove six bolts from the belly pan. Do this on both sides. Set belly pan and bolts aside to be reinstalled later.

BX3772

2010 Lexus LX570

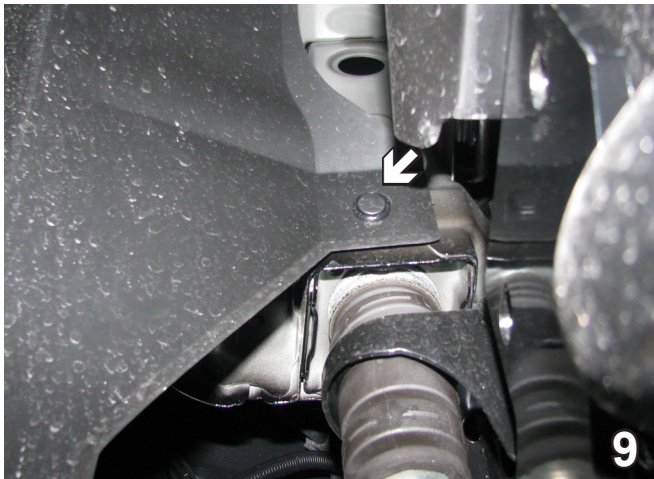
Installation Instructions



7. **LEXUS:** Using a 10MM socket, remove the bolt from underneath the vehicle under the cover which was removed in step 2. Do this to both sides of the vehicle. Set the bolts aside to be reinstalled later.



8. **LEXUS:** Using a 10MM socket, remove the bolt from in front of the tire. Do this on both sides. Set the bolts aside to be reinstalled later.



9. **LEXUS:** Underneath in front of the tire, remove a push pin. Do this on both sides. Set the push pins aside to be reinstalled later.



10. Using the base plate as a template, redrill the first hole, if the existing hole doesn't line up (see white arrow) and drill second hole into the frame using a 17/32" drill bit (see grey arrow). Insert the two remaining 1/2-13x2" hex bolts, 1/2' lock washers and 1/2" nut plates. Tighten those two bolts down and then go back to the first two bolts and tighten the rest of the way down. Do this to both sides of the vehicle.

BE SURE TO USE LOCTITE® RED ON ALL BOLTS BEFORE TIGHTENING. TIGHTEN ALL BOLTS ACCORDING TO THE TORQUE CHART ON THE FRONT PAGE OF THESE INSTRUCTIONS OR ON PAGE 3 OF THE BASEPLATE TOWING GENERAL INSTRUCTIONS.

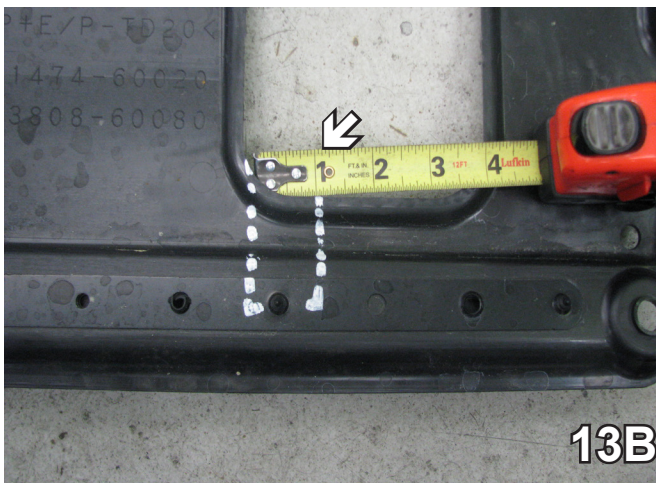
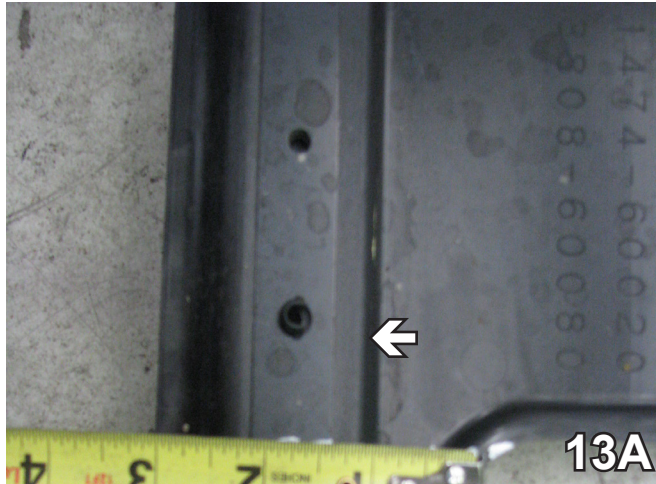
When using power drills be aware of the dangers of torque and drill bit length.

BX3772

2010 Lexus LX570

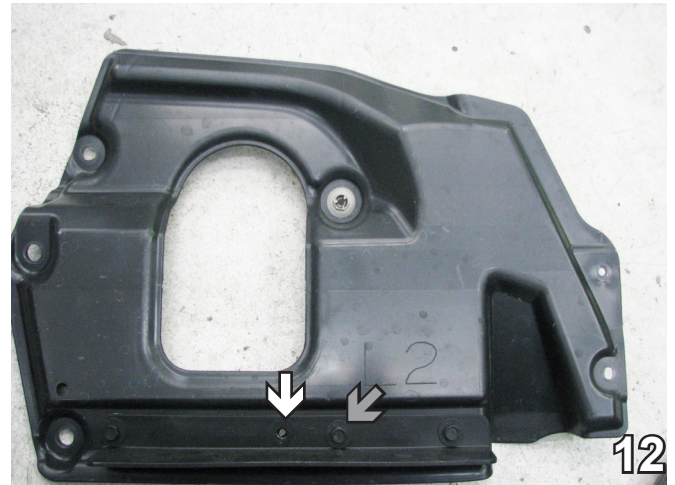
Installation Instructions

11. Attach the permanent base plate safety cables to a solid piece of the vehicle's frame as described in the instructions included with the permanent base plate safety cables. Be sure the safety cables do not rub against any hoses or moving parts.



13. **LEXUS:** On the back of the tow hook cover, cut straight down along the edge 2" to the bottom of the bolt and 1" wide. Do this to both covers.

15. Attach the electrical bracket and connector to the lower front center of the vehicle. Use two self drilling screws with three washers on each side to lower the bracket.



12. **LEXUS:** On the tow hook cover, move the location of the bolt as shown by the white arrow to the location shown with the gray arrow. Do this on both sides.



14. **LEXUS:** On the upper right side, cut from the bottom ridge to the top ridge 1" wide. Do this to both covers.





BX3772 2010 Lexus LX570 Installation Instructions

Install the tow bar and safety cables according to their instructions. When demonstrating this to the customer, be sure to include all of the Blue Ox packaging and contents.

DO NOT substitute other devices if the tow bar pins and clips are misplaced.



Tundra shown with removable tabs installed.



Lexus shown with removable tabs installed.



Lexus shown without removable tabs installed.

Be sure that **ALL** electrical connections are plugged in properly and functioning **BEFORE** reinstalling the fascia.

If the baseplate is in an accident, it must be replaced. **DO NOT** use it again! An accident can cause unseen damage and using it again could result in more damage or serious injury. **DO NOT** use the baseplate if it is damaged or missing parts.

CUSTOMER SERVICE COMMITMENT

Blue Ox is committed to providing you with exceptional customer care throughout your lifetime with our products. Our team is here to assist you with any questions you may have regarding the performance of your product. Simply call (402) 385-3051 and you can speak with our customer care team.

Additionally, please visit our website to see which rallies our Destination America team will be attending. For a nominal fee, our service technician will service your towing system to ensure it's in proper working condition. Also as a commitment to our customers, should you visit our factory you can stay at our full service Blue Ox campground at no charge along with enjoying a factory tour.

Again thank you for being our customer and for the confidence you have shown in the performance of our products. It is because of customers like you we enjoy the success we have today.



© 2007, 08, 09, 10 Blue Ox
One Mill Road, Industrial Park
Pender, Nebraska 68047
Phone: (402) 385-3051
Toll Free: (888) 425-5382
Fax: (402) 385-3360
www.blueox.com