



BX3718 Installation Instructions
1988-92 Toyota Corolla (Not SR-5, FX or GTS)
1989-92 Geo Prizm

Installation of this baseplate requires removing the vehicle's tie down brackets.

1. Read the General Instruction Sheet included with this baseplate.
2. The baseplate mounts to the front underside of the car using eight bolts; three on each side and two in the center.
3. Remove one screw on each side which holds the lower front portion of the wheel well liner in place.
4. Move the wheel well liner out of the way to gain access to the "tie down" brackets and remove the three bolts which secure the brackets to the car. The tie down brackets are stamped metal plates located on each under side of the car with an oblong hole facing downward. Inspect the bolts for reuse.
5. Place a jack under the front to back engine support cross brace and raise it just enough to hold the cross brace in position when the front two bolts are removed. Remove the front two bolts only.
6. Position the baseplate on the car such that the holes in the baseplate side brackets align with the "tie down" bolts and the provided cross brace bolts with lock washers. Use Locktite on all bolts but do not tighten yet.
7. Hand start the previously removed "tie down" bolts and the provided cross brace bolts with lock washers. Use Locktite on all bolts but do not tighten yet.
8. Position the Center Mount Plate tubes such that they align with the cross brace holes. Hand start the 10mm-1.25 x 35 bolts with lock washers provided. Hand start the 1/2"-13 x 1-1/2" bolts, lock washers and nuts to assemble the Center Mount Plate provided to the baseplate. Use Locktite. Do not yet fully tighten.
9. The dimensional variations between otherwise identical cars can be considerable. While the location and size of the hole in the baseplate were designed to facilitate easy installation, it may be necessary to file a hole slightly to allow a bolt to clear.
10. When all bolts are aligned and started tighten the 10mm Center Mount bolts first. Now tighten all other hardware securely.
11. Replace the wheel well liner screws.
12. Remove jack.
13. Install the tow bar and safety cables according to the instructions included in their packages.
14. Do not substitute other devices if the pin and clip are lost.
15. DEALER OR INSTALLER: BE CERTAIN THE USER RECEIVES THE INSTRUCTION SHEET.

Tools Required

3/4 Socket
17mm Socket

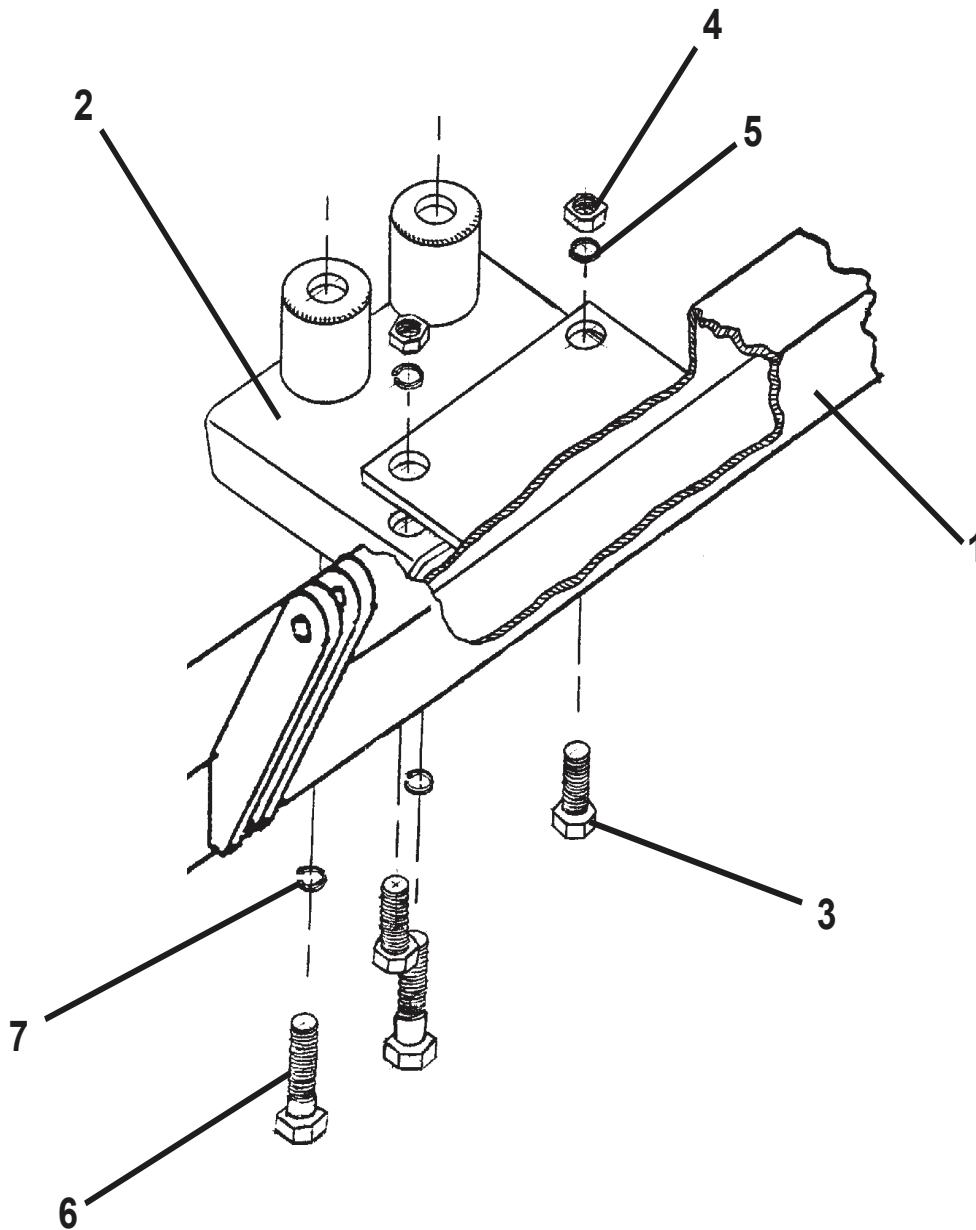
10mm Socket
Jack

14mm Socket

Automatic

Parts List

Ref. No.	Qty.	Part No.	Description
1	1	61-3465	Baseplate, BX3718
2	1	61-3466	Center Mount Bracket
3	2	201-0051	1/2-13 x 1 1/2 Hex Head Bolt, Grade 5
4	2	202-0005	1/2-13 Hex Nut
5	2	203-0012	1/2 Lock Washer
6	2	201-0423	10mm-1.25 x 35 mm Hex Head Bolt
7	2	203-0104	10mm Lock Washer



General Information

1. Ensure that your product(s) are registered online at www.blueox.com. It is crucial to register your product(s) so that you may be alerted of product offerings, updates, upgrades, maintenance and safety bulletins, and/or recalls.
2. **It is the owner's responsibility to inspect all towing equipment for cracked welds, missing or worn parts and loose bolts before each towing trip.** Be sure to use Loctite® Red on all bolts and tighten to the recommended specifications.
3. **It is the owner's responsibility to hook up all towing equipment per manufacturer's instructions/recommendations.**
4. Remove the attachment tabs when not in use (if applicable).

Notice To Baseplate Installer

1. It is YOUR responsibility to watch for:

- Oil cooler and air conditioner lines
- Electrical wires and hoses
- Missing parts or attaching points on the frame

** If the baseplate is improperly installed and is against a wire or hose, it could cause fluid leaks or electrical shorts some time after the actual baseplate installation.

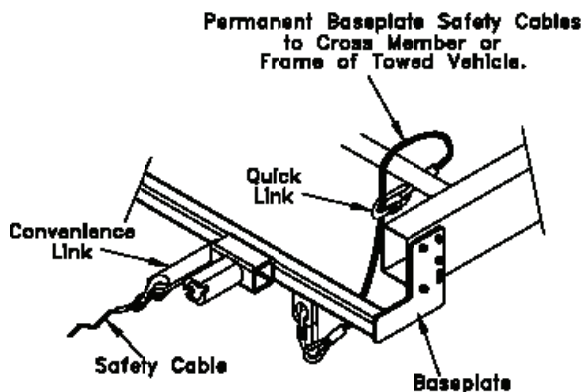
Permanent Baseplate Safety Cable Installation

Permanent baseplate safety cables are strongly recommended when towing a vehicle with a tow bar. The principle function of the permanent baseplate safety cables is to prevent the towed vehicle from breaking loose in the event the connection between the frame of the towed vehicle and the baseplate fails or becomes disconnected. The cables must be connected from the baseplate to the frame rail or cross member of the vehicle's frame. The illustrations below show the possible arrangements recommended by Blue Ox®. Each permanent baseplate safety cable must have an adequate weight rating for the towing system. The weight rating of the two (2) cables together will not qualify.

Do not mount the permanent baseplate safety cables against wires, hoses or brake lines.

These permanent baseplate safety cables should remain installed as long as the baseplate is installed on the vehicle. Permanent baseplate safety cables are to be used in conjunction with, and NOT a replacement for legally required safety cables attaching the towed vehicle to the towing vehicle.

OPTION #1



OPTION #2

