

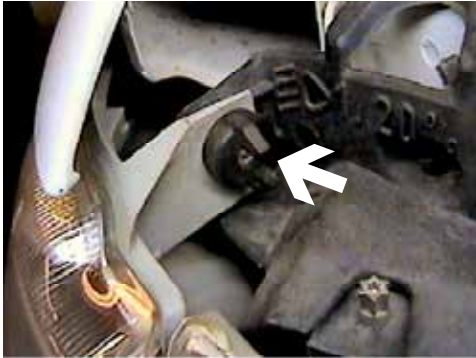


Strong As An Ox™

BX3230 Installation Instructions
1997-2004 Oldsmobile Silhouette
1997-2003 Chevy Venture

Serial No.

The headlight assembly, front fascia, horn bracket and windshield washer reservoir are removed for baseplate installation. Drilling is required. Trimming of air dam on metal bumper is required. The BX8869 is available for the vehicle. Attachment Tabs are 24 inches center to center and a height of 13 3/4 inches.



1. Remove wing nut on top side of head light assembly, pull assembly forward, unplug and set aside, both sides.



2. Remove one push pin from under head light assembly, both sides.



3. Just forward of front tires are two phillips screws to remove, both sides.



4. Forward of front tires, inside wheel well, on fascia's corner is one push pin to remove, both sides.



5. Remove the two phillips screws just forward of the front tire, on the bottom side of fascia, using the phillips screw driver, both sides.



6. Remove two push pins from top edge of lower fascia opening, between fog lights. Pull fascia forward and set aside.



Strong As An Ox™



7. Using the reciprocating saw, cut 1 3/4"- 2" off of passenger's side tie down bracket to open area for baseplate (Vehicles may vary).



8. Align baseplate to the top, front edge of lower frame support, clamp with the vise grips on both sides. Using the baseplate as a template, drill the top two holes with the 13/32" drill bit, both sides. Insert nut plate into end of frame to align with drilled holes and tighten 3/8" hex nut and lock washer as shown in drawing on page 3. **Be sure and use loctite on all bolts before tightening. Torque all bolts according to torque chart in General Instructions.**



9. Using the baseplate as a template, drill lower hole with the 13/32" drill bit, both sides. Align 1/2" spacer plate between lower hole on end plate and drilled hole in tie down bracket on passenger's side. Insert 3/8" hex bolts into lower hole on passenger's side, tighten lock washer and hex nut on back side of tie down bracket. **Be sure and use loctite on all bolts before tightening. Torque all bolts according to torque chart in General Instructions.**

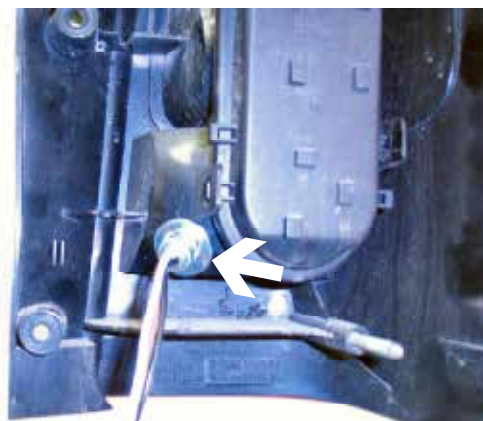


10. Insert spacer washers between lower hole on end plate and drilled hole in tie down bracket on driver's side. Some vehicles may only need one spacer to fill gap. Insert 3/8" hex bolts into lower hole on driver's side, tighten lock washer and hex nut on back side of tie down bracket. **Be sure and use loctite on all bolts before tightening. Torque all bolts according to torque chart in General Instructions.**



Strong As An Ox™

11. Reinstall fascia and head light assemblies. Be sure all electrical connections are plugged in properly.
12. The dimensional variations between otherwise identical cars can be considerable. While the location and size of the holes in the baseplate were designed to allow for easy installation, it may be necessary to file a hole slightly to allow a bolt to clear.
13. Install the tow bar and safety cables according to the instructions included in their packages.
14. Do **not** substitute other devices if the tow bar pin and clip are lost.
15. **DEALER OR INSTALLER: BE CERTAIN THE USER RECEIVES THE INSTRUCTION SHEET.**



*Location for the
Bx8869 on driver's side
tail light assembly.*

Tools Required

7MM Socket
13MM Socket
Phillips Screw Driver
Pry Bar

10MM Socket
Loctite
Vise Grips
Utility Knife

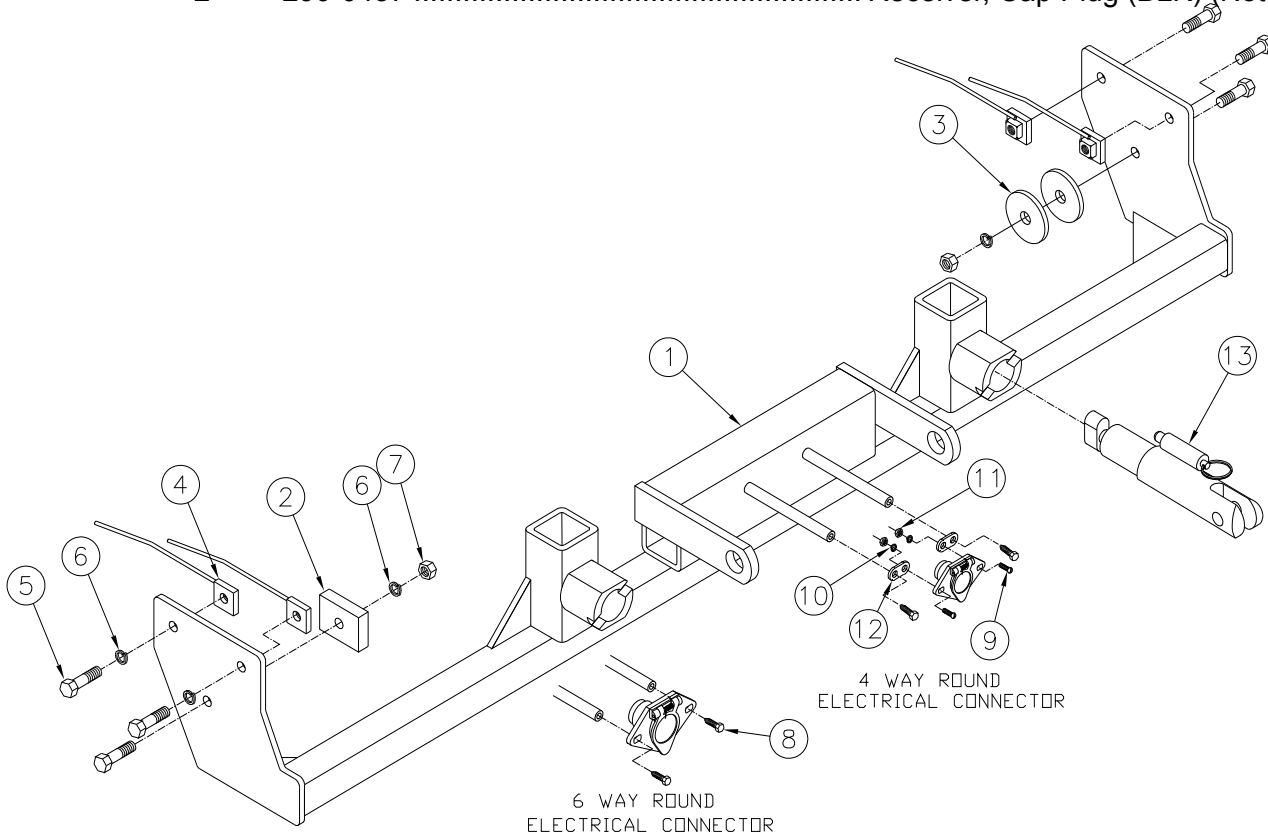
11MM Socket
13/32" Drill Bit
9/16" Socket



Strong As An Ox™

Parts List

Ref. No.	Qty.	Part No.	Description
1	1	61-5978	Weldment, Base Plate, BX3230
2	1	102-6145	Spacer, BX1944
3	2	101-5147	Plate, Washer 1/2" hole, ZP
4	4	61-5208	3/8" Nut Plate, with Wire
5	6	201-0440	3/8-16 x 1 1/2 Bolt, Grd. 5, ZP
6	6	203-0010	3/8 Lock Washer, ZP
7	2	202-0003	3/8-16 Hex Nut, ZP
8	2	201-0979	#12-14 x 1" Self Drilling Screw, ZP
9	2	201-0192	#10-32 x 1/2 Slot, Rd. Hd. Screw
10	2	203-0054	#10 Lock Washer
11	2	202-0047	#10-32 Hex Nut
12	2	101-5822	Adapter, 4 Way Connector
13	2	62-3468	Attachment, Assembly, SF/ SB (R)
	2	226-0046	Baseplate Safety Cable, 36" CL III (Not Shown)
	2	229-0359	Quicklink, 3/8, ZP (Not Shown)
	2	290-0437	Receiver, Cap Plug (BLK) (Not Shown)



IMPORTANT: Use only genuine factory replacement parts on your Base Plate. Do not substitute homemade or nontypical parts. If a bolt is lost or in need of replacement, for your safety and the preservation of your Base Plate, be sure to use a replacement bolt of the same grade (Usually Grade 5, refer to parts list). Repair parts may be ordered through your nearest **Blue Ox** dealer or distributor.

General Information

1. Ensure that your product(s) are registered online at www.blueox.com. It is crucial to register your product(s) so that you may be alerted of product offerings, updates, upgrades, maintenance and safety bulletins, and/or recalls.
2. **It is the owner's responsibility to inspect all towing equipment for cracked welds, missing or worn parts and loose bolts before each towing trip.** Be sure to use Loctite® Red on all bolts and tighten to the recommended specifications.
3. **It is the owner's responsibility to hook up all towing equipment per manufacturer's instructions/recommendations.**
4. Remove the attachment tabs when not in use (if applicable).

Notice To Baseplate Installer

1. It is YOUR responsibility to watch for:

- Oil cooler and air conditioner lines
- Electrical wires and hoses
- Missing parts or attaching points on the frame

** If the baseplate is improperly installed and is against a wire or hose, it could cause fluid leaks or electrical shorts some time after the actual baseplate installation.

Permanent Baseplate Safety Cable Installation

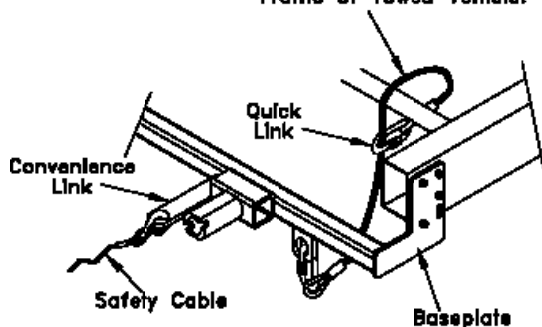
Permanent baseplate safety cables are strongly recommended when towing a vehicle with a tow bar. The principle function of the permanent baseplate safety cables is to prevent the towed vehicle from breaking loose in the event the connection between the frame of the towed vehicle and the baseplate fails or becomes disconnected. The cables must be connected from the baseplate to the frame rail or cross member of the vehicle's frame. The illustrations below show the possible arrangements recommended by Blue Ox®. Each permanent baseplate safety cable must have an adequate weight rating for the towing system. The weight rating of the two (2) cables together will not qualify.

Do not mount the permanent baseplate safety cables against wires, hoses or brake lines.

These permanent baseplate safety cables should remain installed as long as the baseplate is installed on the vehicle. Permanent baseplate safety cables are to be used in conjunction with, and NOT a replacement for legally required safety cables attaching the towed vehicle to the towing vehicle.

OPTION #1

Permanent Baseplate Safety Cables to Cross Member or Frame of Towed Vehicle.



OPTION #2

Permanent Baseplate Safety Cables to Cross Member or Frame of Towed Vehicle.

