



Strong As An Ox™

## BX3221 Installation Instructions

1997 - 2002 Pontiac Montana

Serial No.

3.4 L / V-6 4Dr.

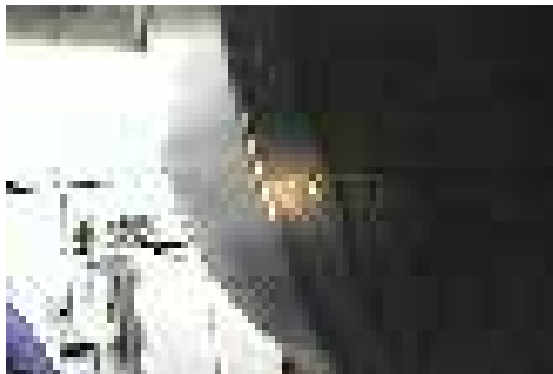
The front fascia, metal bumper, and head lights are removed for baseplate installation. Holes need to be drilled. The attachment tabs are centered at 20 inches and at 13 inches height.



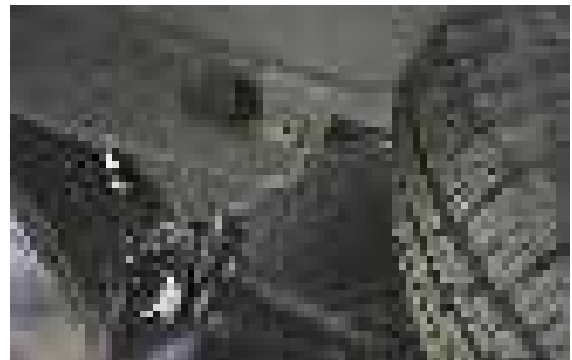
1. Remove one bolt from head light assembly, pull forward, disconnect all electrical components, and set aside, both sides.



2. Remove one phillips head push pin from under head light assembly, each side.



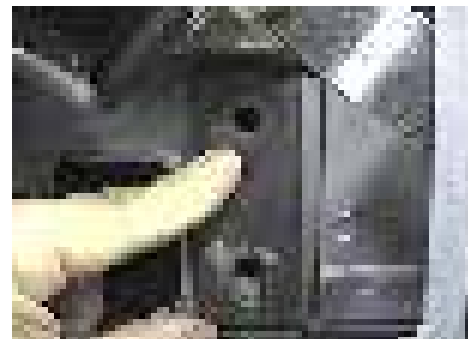
3. Just forward of front tires in wheel well are two push pins to be removed, each side.



4. Just forward of front tires under fascia corners are two push pins to be removed, each side.



5. Remove the four push pins from front fascia openings pull fascia forward and set aside. Then remove air dam from bottom of metal bumper, there are four push pins, and set aside.



6. Using item 4 as a template, drill a 13/32" hole on the out side of frame end, each side. Horn brace may need to be bent out of the way on both sides.



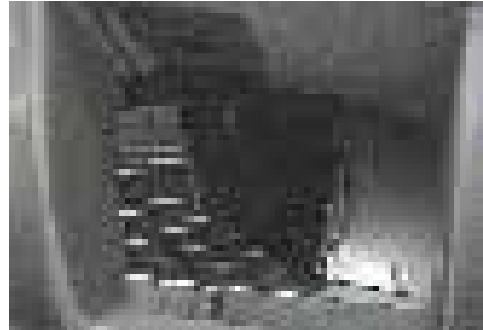
Strong As An Ox™



8. Insert item 2 into side frame openings to drilled and existing holes, through 4 of item 4 each side, and into item 1.



10. Use items 5, 6, and 7 to fasten baseplate to frame. Do not tighten. **Be sure and use loctite on all bolts before tightening.**



9. Hold baseplate into place and bend frame webbing out of the way just under metal bumper.



11. Hold item 1 to the bottom of metal bumper and drill four 13/32" holes. Insert item 3 into metal bumper ends to drilled holes. Using items 6 and 7 tighten. Then tighten remaining bolts. **Be sure and use loctite on all bolts.**

12. Some trimming is required to air dam to bottom of metal bumper before replacing. Use 2 self tapping screws to help hold air dam in place, item 8. Be sure all bolts are tightened according to manufacturer specifications.

13. Replace Fascia and head light assemblies.

14. The dimensional variations between otherwise identical cars can be considerable. While the location and size of the holes in the baseplate were designed to allow for easy installation. It may be necessary to file a hole slightly.

15. Install tow bar and safety cables according to the instructions included in their packages. Do not substitute other devices if the tow bar pin or clip is lost.

16. **DEALER OR INSTALLER: BE CERTAIN THE USER RECEIVES THE INSTRUCTION SHEET.**



## Tools Required

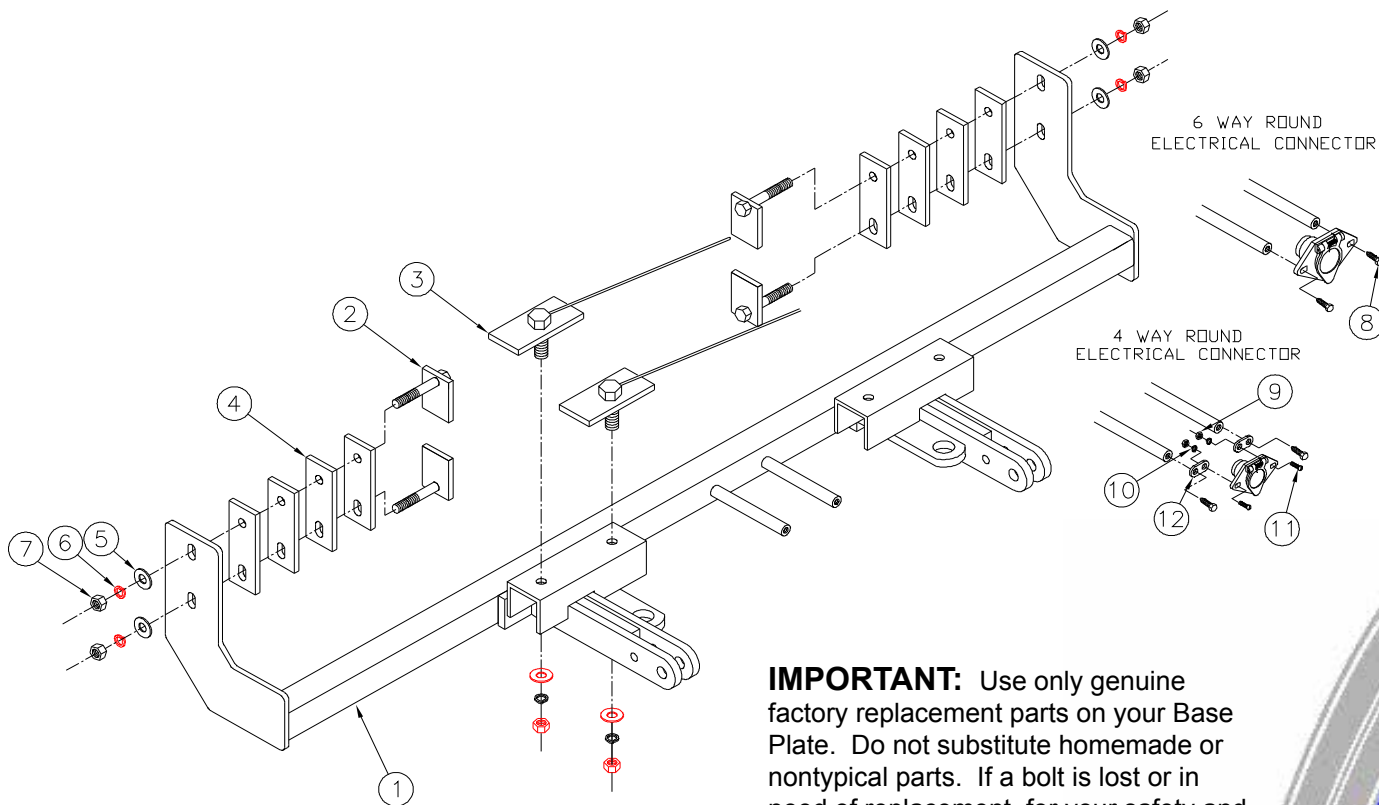
Loctite Blue

17/32" Drill Bit  
Vise Grips

9/16" Socket

## Parts List

Ref. No.	Qty.	Part No.	Description
1	1	61-5608	Weldment, Base Plate, BX3221
2	4	61-5610	Weldment, 3/8-16 X 2 1/4, Nut Plate
3	4	61-5609	Weldment, 3/8-16 x1 1/4, Bolt Plate, with Wire
4	8	102-6080	Plate, Spacer, BX3221
5	4	203-0003	3/8 Flat Washer, ZP
6	8	203-0010	3/8 Lock Washer, ZP
7	8	202-0003	3/8-16 Hex Nut, ZP
8	4	201-0553	1/4-20 x 1/2 Hx. Wshd, Type F Screw
9	2	202-0047	#10-32 Hex Nut
10	2	203-0054	#10 Lock Washer
11	2	201-0192	#10-32 x 1/2 Slot, Rd. Hd. Screw
12	2	101-5822	Adapter, 4 Way Connector
	2	226-0046	Baseplate Safety Cable, 36" CL III (Not Shown)
	4	229-0359	Quicklink, 3/8, ZP (Not Shown)



**IMPORTANT:** Use only genuine factory replacement parts on your Base Plate. Do not substitute homemade or nontypical parts. If a bolt is lost or in need of replacement, for your safety and the preservation of your Base Plate, be sure to use a replacement bolt of the same grade (Usually Grade 5, refer to parts list). Repair parts may be ordered through your nearest **Blue Ox** dealer or distributor.

# General Information

1. Ensure that your product(s) are registered online at [www.blueox.com](http://www.blueox.com). It is crucial to register your product(s) so that you may be alerted of product offerings, updates, upgrades, maintenance and safety bulletins, and/or recalls.
2. **It is the owner's responsibility to inspect all towing equipment for cracked welds, missing or worn parts and loose bolts before each towing trip.** Be sure to use Loctite® Red on all bolts and tighten to the recommended specifications.
3. **It is the owner's responsibility to hook up all towing equipment per manufacturer's instructions/recommendations.**
4. Remove the attachment tabs when not in use (if applicable).

## Notice To Baseplate Installer

### 1. It is YOUR responsibility to watch for:

- Oil cooler and air conditioner lines
- Electrical wires and hoses
- Missing parts or attaching points on the frame

\*\* If the baseplate is improperly installed and is against a wire or hose, it could cause fluid leaks or electrical shorts some time after the actual baseplate installation.

## Permanent Baseplate Safety Cable Installation

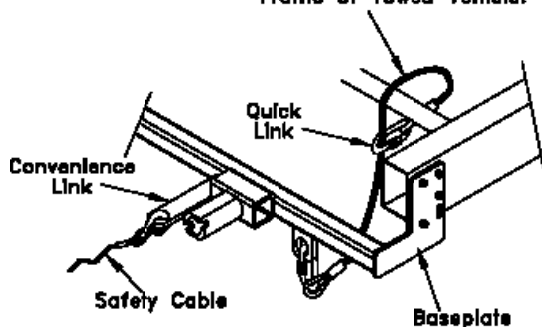
Permanent baseplate safety cables are strongly recommended when towing a vehicle with a tow bar. The principle function of the permanent baseplate safety cables is to prevent the towed vehicle from breaking loose in the event the connection between the frame of the towed vehicle and the baseplate fails or becomes disconnected. The cables must be connected from the baseplate to the frame rail or cross member of the vehicle's frame. The illustrations below show the possible arrangements recommended by Blue Ox®. Each permanent baseplate safety cable must have an adequate weight rating for the towing system. The weight rating of the two (2) cables together will not qualify.

***Do not mount the permanent baseplate safety cables against wires, hoses or brake lines.***

These permanent baseplate safety cables should remain installed as long as the baseplate is installed on the vehicle. Permanent baseplate safety cables are to be used in conjunction with, and NOT a replacement for legally required safety cables attaching the towed vehicle to the towing vehicle.

### OPTION #1

Permanent Baseplate Safety Cables to Cross Member or Frame of Towed Vehicle.



### OPTION #2

Permanent Baseplate Safety Cables to Cross Member or Frame of Towed Vehicle.

