



BX3205 Installation Instructions 1995-99 Pontiac Sunfire (Not GT)

Utilization of Blue Ox baseplates with any tow bar not approved by Automatic Equipment Mfg. Company invalidates the limited warranty.

Installation of this baseplate requires removing the vehicle's bumper and headlights. 17/32" holes will be drilled into the frame rails. The front of the bumper will need to be notched to allow for attachment tab clearance.

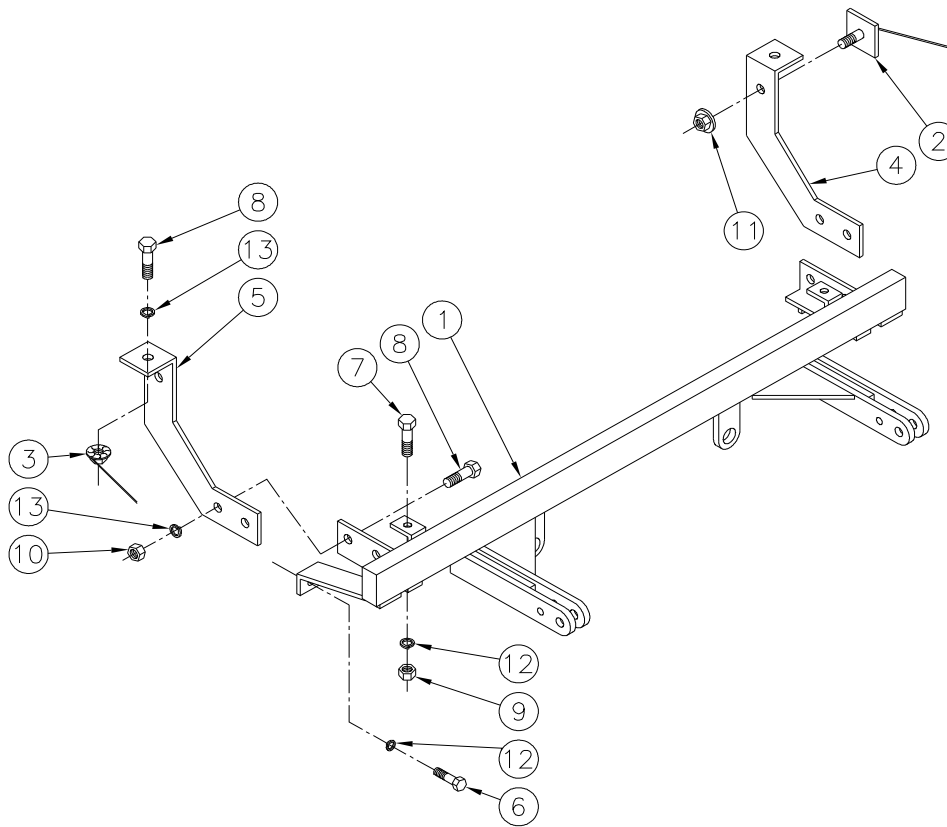
1. Read the General Instruction Sheet included with this baseplate.
2. The baseplate mounts to the vehicle behind the bumper with twelve provided bolts.
3. The bumper will need to be completely removed for the installation. On top of the headlights is a plastic cover. Remove the six plastic rivets that hold the cover and set it aside. There are two bolts that mount each headlight. Use a 13mm wrench to remove the bolts and pull the headlights up and forward to remove them. Unplug the wires and set the lights aside where they won't be damaged. Inside of the car is usually a good location.
4. Remove three plastic push pins that connect the top center of the plastic bumper to the metal bumper. With a 7mm socket, remove the 14 bolts from the bottom and ends of the bumper. There is a single 10mm wrench size bolt that bolts the top rear of the bumper to the fender on each side of the car. It can be accessed by pulling back the plastic liner in front of the tire and removed with a socket and a long extension. There are two more nuts of the same size behind the headlight that hold the bumper to the fender.
5. Pull straight forward on the bumper and remove. Once the bumper is off of the vehicle, the parking light bulbs can be twisted out of their sockets and the bumper can be set aside. There is a black plastic piece still attached to the back of the metal bumper with two plastic rivets. Remove the rivets and set this piece aside.
6. Notice the open space at the front ends of the vehicle frame rails where the bumper mounts are located. A 1/2 x 1 1/4 bolt plate and 1/2 nut wire must be inserted through this space. The gap is probably not big enough to do this now. The four bolts that attach the bumper to the frame will have to be loosened so the bolt plate can be inserted. The top nuts can be accessed from the ends of the bumper with a 13mm wrench. Notice the "honeycombed" plastic riveted to the front of the bumper. There are three sections attached together by two flat pieces. These flat pieces cover a large hole in the front of the bumper. With a utility knife, cut away the plastic over the hole at each end. A 13mm socket and long extension can now be inserted through this hole and the inner nuts on the bumper can be loosened.
7. Loosen the nuts enough to allow the bolt plate into the frame rail. Bend the wire on the bolt plate so the bolt can be inserted through the large slot on the inside of the frame rails. After both bolt plates have been installed, the bumper bolts can be tightened. Make sure that the 1/2 nut wires can still be inserted through the opening.
8. Install each rear support on the appropriate side with the bolt plate and whiz nut. Leave the nut loose.
9. Notice the two small holes in the bottom of the metal bumper. The two 3/8 x 1 hex bolts need to be dropped into these holes from the inside of the bumper. The holes can be accessed through the square hole beside the round hole or through the large holes that were exposed in Step #7, whichever is easier.

Automatic

10. With the 13mm socket, remove the two bolts below the bumper that attach the bent rod to the frame rails on one end and the hood latch on the other. Remove these two bolts. They will not be used again.
11. With an assistant hold the baseplate up under the bumper and start the 3/8 bolts in the bottom of the bumper through the angles welded on the top of the baseplate. Apply Loctite to the threads on a 3/8 hex nut and start the nut and 3/8 lock washer on the two bolts. Do not tighten yet.
12. The dimensional variations between otherwise identical cars can be considerable. While the location and size of the holes in the baseplate were designed to allow for easy installation, it may be necessary to file a hole slightly to allow a bolt to clear.
13. The outside supports on the baseplate should line up with the holes in the bent rod and frame rails. Apply Loctite to the threads of the 8mm- 1.25 x 35mm bolts and start the bolt, along with a 3/8 lock washer, through the support, the bent rod, and the frame rail. Do not tighten yet.
14. The two holes on the front of the rear supports should line up with the holes and lay on the outside of the attachment pieces welded to the baseplate. Apply Loctite to the threads of four of the 1/2 x 1 1/4 hex bolts. Insert the four bolts and start a 1/2 lock washer and hex nut on each. Do not tighten these bolts yet.
15. Using a 9/16 socket, tighten the 3/8 bolts in the bottom of the bumper and then tighten the 8mm bolts on the outside supports. You can then tighten the four 1/2 bolts on the front of the rear supports with a 3/4 wrench and socket. Tighten the 1/2 whiz nut that was installed in Step #8 with a 3/4 wrench.
16. When all bolts are tightened, use a 17/32 transfer punch to mark the hole in the top of the rear supports. Use a 17/32 bit to drill a hole through the top of the frame rails. Insert the 1/2 nut wires through the openings discussed in Step #7 and bend the wire so the whiz nut lies over the drilled hole. Apply Loctite to the two remaining 1/2 x 1 1/4 bolts and start the bolt, along with a 1/2 lock washer, through the hole and into the whiz nut. Tighten the bolt and repeat on the other side.
17. Bend the wires out of the way and reinstall the bumper. The front of the bumper will need to be notched to let the attachment tabs through. The notches should be about 12 inches from either side of center and approximately 1 1/2 tall and 1 3/8 wide. Hold the bumper in front of the baseplate and mark where the slots need to be. Use a utility knife to cut the notches and test fit the bumper to check the location of the notches. Start small with the notches and enlarge only as much as necessary to get a good fit. Secure the bumper with all hardware removed in Steps 3-5. Don't forget to plug the parking light bulbs back in. Reinstall the headlights and the plastic cover.
18. Install the tow bar and safety cables according to the instructions included in their packages.
19. Do not substitute other devices if the tow bar pin and clip are lost.
20. DEALER OR INSTALLER: BE CERTAIN THE USER RECEIVES THE INSTRUCTION SHEET.

Tools Required

13mm Socket	10mm Socket	7mm Socket
Flat Screwdriver	3/4" Socket	3/4" Wrench
9/16" Socket	17/32" Transfer Punch	17/32" Drill Bit
Loctite Blue	Utility Knife	



Parts List

Ref. No.	Qty.	Part No.	Description
1	1	61-4813	Weldment, Baseplate, BX3205
2	2	61-4593	1/2 x 1-1/4 Bolt Plate and Wire
3	2	61-4029	Weldment, 1/2 Nut Wire
4	1	101-5391	Rear Support, PS
5	1	101-5392	Rear Support, DS
6	2	201-0418	8mm-1.25 x 35mm Hex Bolt, Grd 8.8
7	2	201-0443	3/8-16 x 1 Hex Bolt, Grd 5
8	6	201-0011	1/2-13 x 1-1/4 Hex Bolt, Grd 5
9	2	202-0003	3/8-16 Hex Nut
10	4	202-0005	1/2-13 Hex Nut
11	2	202-0072	1/2-13 Hex Flange Whiz Nut
12	4	203-0010	3/8 Lock Washer
13	6	203-0012	1/2 Lock Washer
	2	226-0046	Baseplate Safety Cable, 36" CL III (Not Shown)
	4	229-0359	Quicklink, 3/8, ZP (Not Shown)

General Information

1. Ensure that your product(s) are registered online at www.blueox.com. It is crucial to register your product(s) so that you may be alerted of product offerings, updates, upgrades, maintenance and safety bulletins, and/or recalls.
2. **It is the owner's responsibility to inspect all towing equipment for cracked welds, missing or worn parts and loose bolts before each towing trip.** Be sure to use Loctite® Red on all bolts and tighten to the recommended specifications.
3. **It is the owner's responsibility to hook up all towing equipment per manufacturer's instructions/recommendations.**
4. Remove the attachment tabs when not in use (if applicable).

Notice To Baseplate Installer

1. It is YOUR responsibility to watch for:

- Oil cooler and air conditioner lines
- Electrical wires and hoses
- Missing parts or attaching points on the frame

** If the baseplate is improperly installed and is against a wire or hose, it could cause fluid leaks or electrical shorts some time after the actual baseplate installation.

Permanent Baseplate Safety Cable Installation

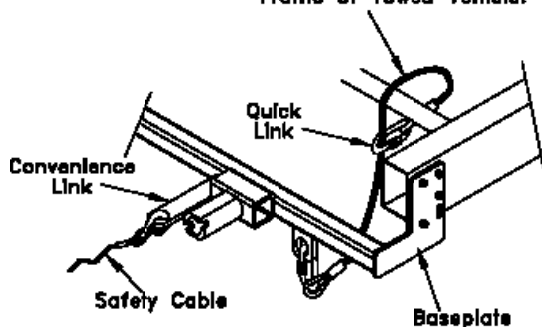
Permanent baseplate safety cables are strongly recommended when towing a vehicle with a tow bar. The principle function of the permanent baseplate safety cables is to prevent the towed vehicle from breaking loose in the event the connection between the frame of the towed vehicle and the baseplate fails or becomes disconnected. The cables must be connected from the baseplate to the frame rail or cross member of the vehicle's frame. The illustrations below show the possible arrangements recommended by Blue Ox®. Each permanent baseplate safety cable must have an adequate weight rating for the towing system. The weight rating of the two (2) cables together will not qualify.

Do not mount the permanent baseplate safety cables against wires, hoses or brake lines.

These permanent baseplate safety cables should remain installed as long as the baseplate is installed on the vehicle. Permanent baseplate safety cables are to be used in conjunction with, and NOT a replacement for legally required safety cables attaching the towed vehicle to the towing vehicle.

OPTION #1

Permanent Baseplate Safety Cables to Cross Member or Frame of Towed Vehicle.



OPTION #2

Permanent Baseplate Safety Cables to Cross Member or Frame of Towed Vehicle.

