



Strong As An Ox™

BX2903 Installation Instructions 2001 Lexus, V-6/ 3.0L

Serial No.

The front fascia, blinker assembly, and bumper are removed for baseplate installation. Holes need to be drilled. The attachment tabs are 24 inches center to center and 13 1/2 inches height.



1. Remove the ten push pins from the black plastic just above grill and set aside. Also remove two push pins from under metal bumper.
2. With the phillips screw driver remove one screw each side, pull blinker assembly forward, unplug, and set aside.



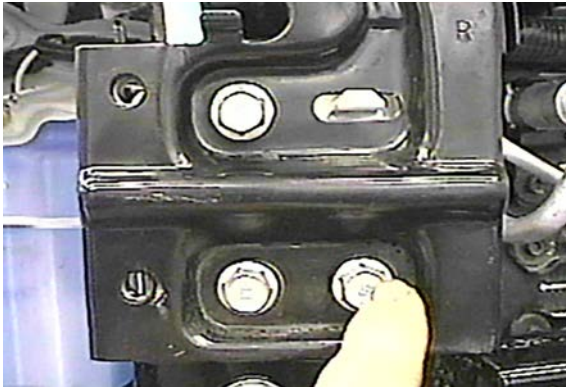
3. Just under blinker assembly, remove a metric nut using the 10MM socket, both sides.
4. Remove the six metric bolts from the underside of fascia with the 10MM socket or phillips screw driver.



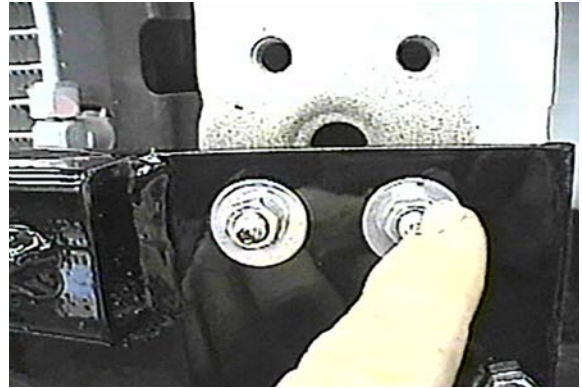
5. Remove metric bolt from outside corner of fascia and behind wheel well plastic with 10MM socket. Pull fascia forward and set aside.
6. Remove metal bumper bolts with a 14MM socket, set bumper aside.



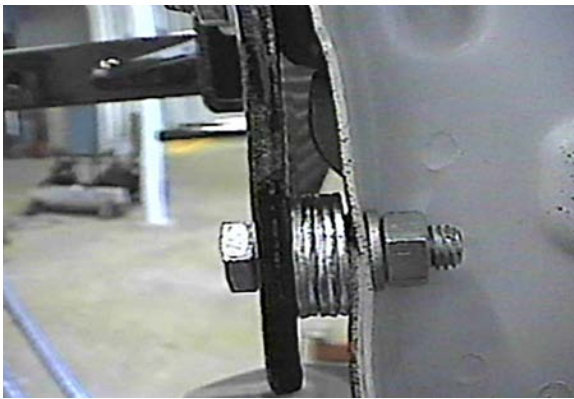
Strong As An Ox™



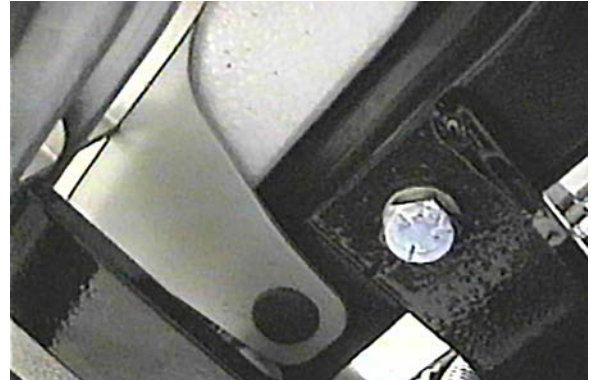
7. Loosen the bumper bracket bolts with the 14MM socket. Insert baseplate end under bumper brackets and on existing metric studs, both sides.



8. Using items 9, 10, and 11 bolt baseplate to frame, do not tighten. **Be sure and use loctite on all bolts before tightening.**



9. Using the baseplate as a template drill a 13/32" hole, both sides. Insert items 5, 6, 7, and 8 as shown in the photo above, tighten all bolts. **Be sure and use loctite on all bolts before tightening.**



10. Reinstall the metal bumper and drill the two 17/32" holes on the bottom side of the metal bumper using the baseplate as a template. Insert item 2 into end of metal bumper to align with drilled holes and fasten with items 3 and 4. **Be sure and use loctite on all bolts before tightening.**

11. Install fascia, blinker assembly, and black plastic above grill.

12. The dimensional variations between otherwise identical cars can be considerable. While the location and size of the holes in the baseplate were designed to allow for easy installation, it may be necessary to file a hole slightly to allow a bolt to clear.

13. Install the tow bar and safety cables according to the instructions included in their packages.

14. Do **not** substitute other devices if the tow bar pin and clip are lost.

15. **DEALER OR INSTALLER: BE CERTAIN THE USER RECEIVES THE INSTRUCTION SHEET.**



Strong As An Ox™

Tools Required

14MM Socket
10MM Socket
Vise Grips

Loctite Blue
3/4" Socket
9/16" Socket

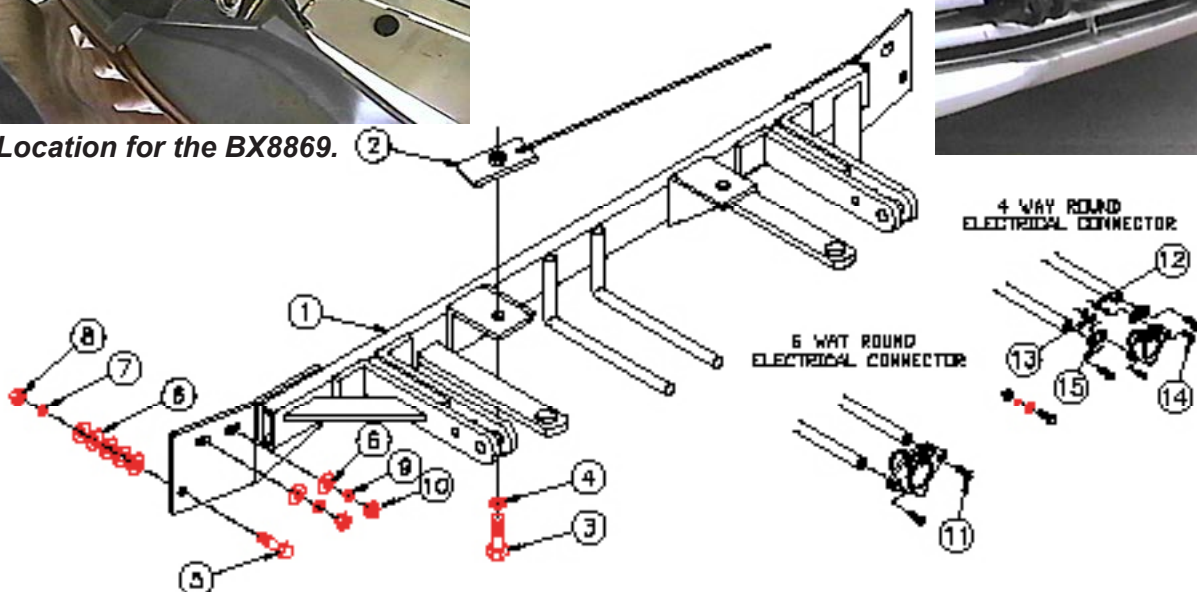
13/32" Drill Bit
17/32" Drill Bit
Phillip Screw Driver

Parts List

Ref. No.	Qty.	Part No.	Description
1	1	61-5640	Weldment, Base Plate, BX2903
2	2	61-5342	Weldment, 1/2-13, Nut Plate, with Wire
3	2	201-0011	1/2-13 x 1 1/4 Hex Bolt, Grd. 5, ZP
4	2	203-0012	1/2 Lock Washer, ZP
5	2	201-0440	3/8-16 x 1 1/2 Hex Bolt, Grd. 5, ZP
6	14	203-0003	3/8 Flat Washer, ZP
7	2	203-0010	3/8 Lock Washer, ZP
8	2	202-0003	3/8-16 Hex Nut, ZP
9	4	203-0102	8MM Lock Washer, ZP
10	4	202-0118	8MM-1.25, Hex Nut, ZP
11	2	201-0979	#12-14 x 1" Self Drilling Screw, ZP
12	2	202-0047	#10-32 Hex Nut
13	2	203-0054	#10 Lock Washer
14	2	201-0192	#10-32 x 1/2 Slot, Rd. Hd. Screw
15	2	101-5822	Adapter, 4 Way Connector



Location for the BX8869.



IMPORTANT: Use only genuine factory replacement parts on your Base Plate. Do not substitute homemade or nontypical parts. If a bolt is lost or in need of replacement, for your safety and the preservation of your Base Plate, be sure to use a replacement bolt of the same grade (Usually Grade 5, refer to parts list). Repair parts may be ordered through your nearest **Blue Ox** dealer or distributor.

General Information

1. Ensure that your product(s) are registered online at www.blueox.com. It is crucial to register your product(s) so that you may be alerted of product offerings, updates, upgrades, maintenance and safety bulletins, and/or recalls.
2. **It is the owner's responsibility to inspect all towing equipment for cracked welds, missing or worn parts and loose bolts before each towing trip.** Be sure to use Loctite® Red on all bolts and tighten to the recommended specifications.
3. **It is the owner's responsibility to hook up all towing equipment per manufacturer's instructions/recommendations.**
4. Remove the attachment tabs when not in use (if applicable).

Notice To Baseplate Installer

1. It is YOUR responsibility to watch for:

- Oil cooler and air conditioner lines
- Electrical wires and hoses
- Missing parts or attaching points on the frame

** If the baseplate is improperly installed and is against a wire or hose, it could cause fluid leaks or electrical shorts some time after the actual baseplate installation.

Permanent Baseplate Safety Cable Installation

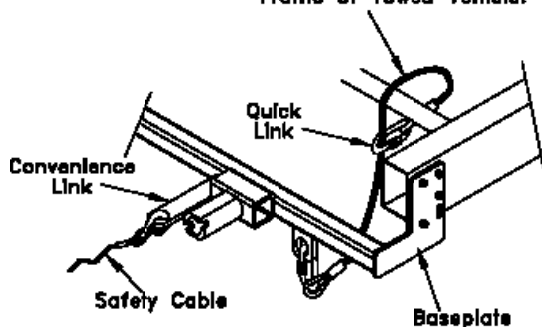
Permanent baseplate safety cables are strongly recommended when towing a vehicle with a tow bar. The principle function of the permanent baseplate safety cables is to prevent the towed vehicle from breaking loose in the event the connection between the frame of the towed vehicle and the baseplate fails or becomes disconnected. The cables must be connected from the baseplate to the frame rail or cross member of the vehicle's frame. The illustrations below show the possible arrangements recommended by Blue Ox®. Each permanent baseplate safety cable must have an adequate weight rating for the towing system. The weight rating of the two (2) cables together will not qualify.

Do not mount the permanent baseplate safety cables against wires, hoses or brake lines.

These permanent baseplate safety cables should remain installed as long as the baseplate is installed on the vehicle. Permanent baseplate safety cables are to be used in conjunction with, and NOT a replacement for legally required safety cables attaching the towed vehicle to the towing vehicle.

OPTION #1

Permanent Baseplate Safety Cables to Cross Member or Frame of Towed Vehicle.



OPTION #2

Permanent Baseplate Safety Cables to Cross Member or Frame of Towed Vehicle.

