



BX2650
 2014 Ford Fiesta ST/SE
 (w/EcoBoost)
 Installation Instructions

Attachment Tab Height: 22"

Attachment Tab Width: 24"

Serial Number

Please read BOTH these Installation Instructions and the General Instructions prior to installing or operating this equipment.

- Blue Ox® towing products and accessories are intended to be installed by Blue Ox® Dealers who are familiar with our products and have the equipment and knowledge necessary to do "fit work". If needed, Blue Ox® Dealers can be found at www.blueox.com or by contacting our Customer Care Department at (402) 385-3051.
- Many Blue Ox® baseplates are designed to use existing holes and hardware to mount the baseplate to the towed vehicle. Even though bolts are there, do not assume they are adequate for baseplate mounting. Always use the hardware supplied in the hardware kit and existing hardware as specified in the installation instructions.

Bolt Torque Specifications

Torque in Foot-Pounds for Inch Bolts

Bolt Size	Grade 5	Grade 8
1/4"	10	14
5/16"	19	29
3/8"	33	47
7/16"	54	78
1/2"	78	119
5/8"	154	230
3/4"	257	380

Bolt Torque Specifications

Torque in Foot-Pounds for Metric Bolts

Bolt Size	Grade 8.8	Grade 10.9
6MM	6	8
8MM	16	22
10MM	31	40
12MM	54	70
14MM	89	117
16MM	161	230
18MM	222	318



If the front of your vehicle looks different than this, please contact us at (402)385-3051.

Reference your vehicle owner's manual for manufacturer's towing specifications.



WARNING

Failure to read and follow these instructions could result in separation of the towed vehicle from the tow bar, causing property damage, loss of towed vehicle, personal injury or death.

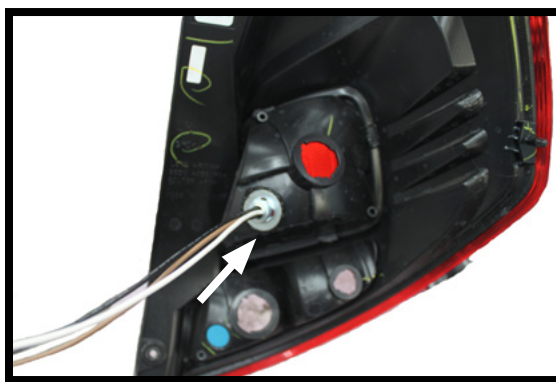
BX2650
2014 Ford Fiesta ST/SE (w/EcoBoost)
Installation Instructions

Instruction Notes: The headlights, fascia and windshield washer fluid reservoir are removed and reinstalled for the baseplate installation. Some drilling and trimming is required.

Place all components that are removed on a flat, sturdy surface. All items will be reinstalled unless otherwise noted after the baseplate is installed.

The dimensional variations between otherwise identical vehicles can be considerable. While the baseplate was designed for easy installation, it may be necessary to tailor the baseplate slightly to compensate for vehicle manufacturer's tolerances.

The BX8869 Tail Light Wiring Kit is recommended for this vehicle.



Drill a hole according to the tail
light wiring kit instructions.

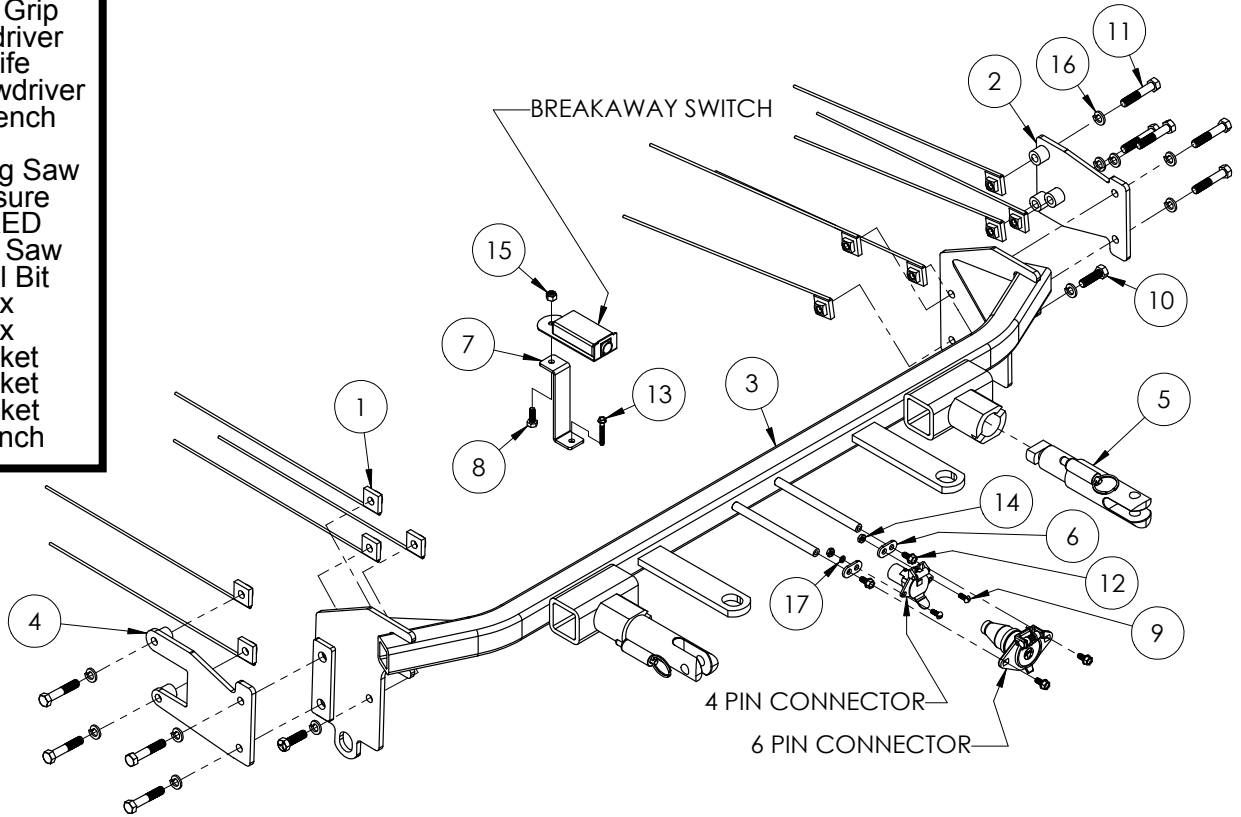
NOTICE

- Handling of some cosmetic parts when installing this product may require the use of protective covers, rags, specialty tools, etc. to prevent damage.
- When using power drills be aware of the dangers of torque and drill bit length.
- When using a reciprocating saw be aware of objects behind the cutting surface.
- Use a good quality paint to spray cut edges of frame to prevent rusting.
- Be sure that **ALL** electrical connections are plugged in and accessories are functioning properly before reinstalling the fascia.
- The baseplate is computer tested to your vehicle's GVWR, exceeding this weight will void the manufacturer's warranty.
- Be sure to use Loctite® Red on all bolts before tightening. Tighten all bolts according to the torque chart provided.
- Dealer or installer be certain the user receives these instruction sheets.
- If the baseplate is in an accident, it must be replaced. **DO NOT** use it again! An accident can cause unseen damage and using it again could result in more damage or serious injury. **DO NOT** use the baseplate if it is damaged or missing parts.

BX2650
2014 Ford Fiesta ST/SE (w/EcoBoost)
Installation Instructions

Tools Required

- Large Vise Grip
- Flat Screwdriver
- Utility Knife
- Phillips Screwdriver
- Torque Wrench
- Drill
- Reciprocating Saw
- Tape Measure
- Loctite® RED
- 1-1/4" Hole Saw
- 13/32" Drill Bit
- T25 Torx
- T30 Torx
- 7MM Socket
- 8MM Socket
- 9/16" Socket
- 9/16" Wrench



Item No.	Part No.	Description	Qty.
1.....	61-5208.....	3/8"-16 Nut Plate w/ Wire	11
2.....	61-6787.....	Driver Side Support Bracket.....	1
3.....	61-7304.....	BX2650 Baseplate.....	1
4.....	61-7305.....	Passenger Side Support Bracket	1
5.....	62-3468.....	Attachment Tab Assembly with Hole	2
6.....	101-5822.....	4 Way Connector Adapter	2
7.....	102-7116.....	Breakaway Bracket	1
8.....	201-0050.....	1/4"-20 x 3/4" Hex Head Bolt, Grade 5, ZP	1
9.....	201-0192.....	#10-32 1/2" Round Slotted Head Screw.....	2
10.....	201-0368.....	3/8"-16 x 1-1/4" Hex Head Bolt, Grade 5, ZP	2
11.....	201-0444.....	3/8"-16 x 2" Hex Head Bolt, Grade 5, ZP	9
12.....	201-0553.....	1/4-20 x 1/2" Hex Wshd Bolt Type F TCS, ZP	2
13.....	201-0654.....	#10-16 x 1" Self Drilling Screw, ZP.....	1
14.....	202-0047.....	#10-32 Hex Nut	2
15.....	202-0102.....	1/4"-20 Hex Nylon Nut, ZP	1
16.....	203-0010.....	3/8" Lock Washer, ZP	11
17.....	203-0054.....	#10 Lock Washer, ZP	2
18.....	226-0046(not shown).....	Class III Safety Cables	2
19.....	229-0359(not shown).....	3/8" Quicklink, ZP	2
20.....	290-0437(not shown).....	Black Cap Plug Receiver.....	2

Important:

Use only genuine factory replacement parts on your baseplate. Do **NOT** substitute homemade or non-typical parts. If a bolt is lost or in need of replacement, for your safety and the preservation of your baseplate, be sure to use a replacement bolt of the same grade (In most cases it will be Grade 5, please reference the parts list above). Replacement parts may be ordered through your nearest Blue Ox® Dealer or Distributor. Failing to follow and/or altering these installation instructions in either installation or required equipment will void the manufacturer's warranty. Towing behind a non-motorized vehicle will void the warranty.

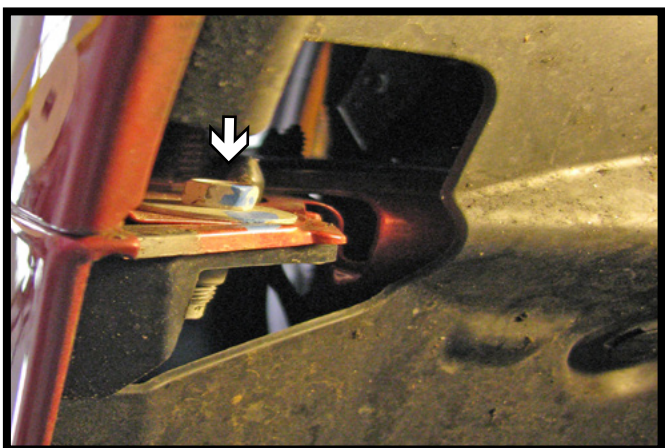
BX2650
2014 Ford Fiesta ST/SE (w/EcoBoost)
Installation Instructions



1. Remove the four (4) Phillips head push pins from the top edge of the fascia. There are two (2) on each side.



2. Using a T25 Torx, remove the two (2) screws from the wheel well. Do this on both sides of the vehicle.



3. Using a 8MM socket, remove the screw from the upper edge of the wheel well. Do this on both sides of the vehicle.

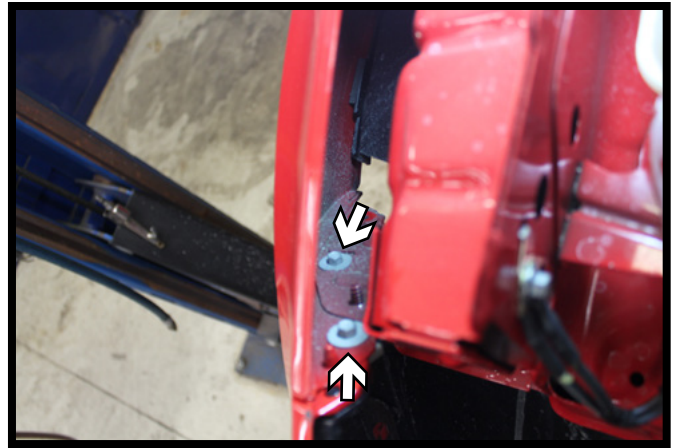


4. Using a 7MM socket, remove the five (5) screws from the underside of the fascia. There are two (2) in each corner and one (1) in the middle.

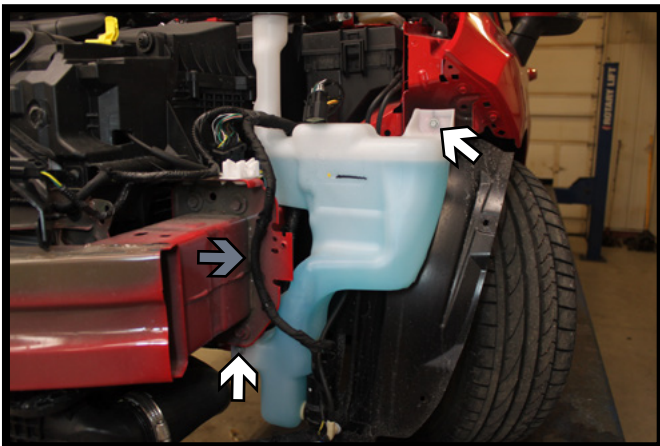
BX2650
2014 Ford Fiesta ST/SE (w/EcoBoost)
Installation Instructions



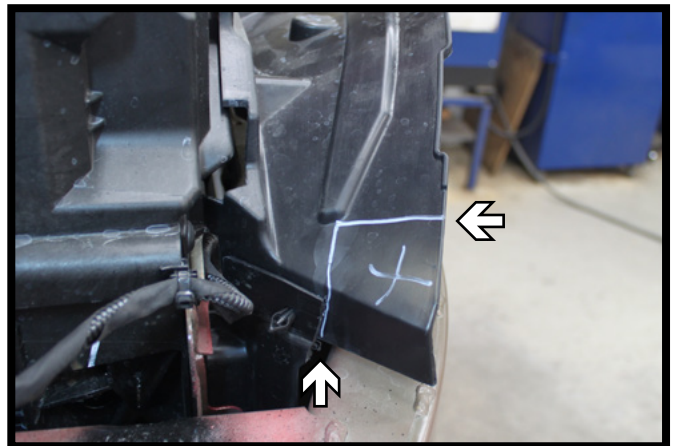
5. Using a T30 Torx, remove the two (2) screws from the headlight. Disconnect the electrical line and set the head light aside. Do this on both sides of the vehicle.



6. Using a 8MM socket, remove the two (2) screws from the edge of the fascia underneath the headlight. Do this on both sides vehicle.

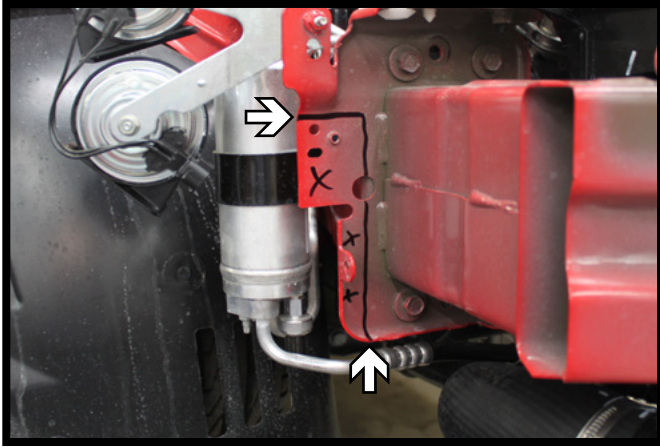


7. Disconnect the wire loom clips from the frame (gray). Using a 10MM socket, remove the two (2) screws from the washer fluid reservoir (white). Disconnect all lines and plug fluid lines. Set the reservoir aside.




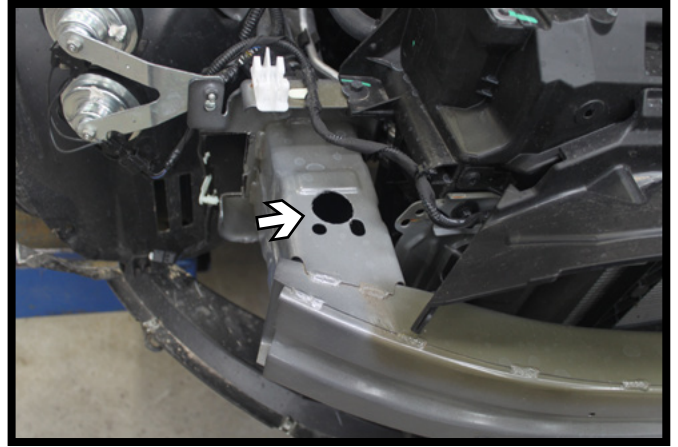
8. Trim the upper shrouding as shown for baseplate clearance. Do this on both sides of the vehicle.

BX2650
2014 Ford Fiesta ST/SE (w/EcoBoost)
Installation Instructions

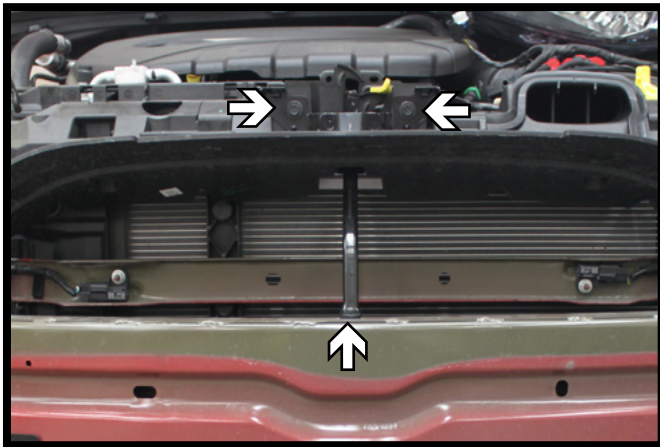


9. Trim the face of the frame extension just below the rib (top arrow) back to the face of the frame (bottom arrow). Do this on both sides of the vehicle.

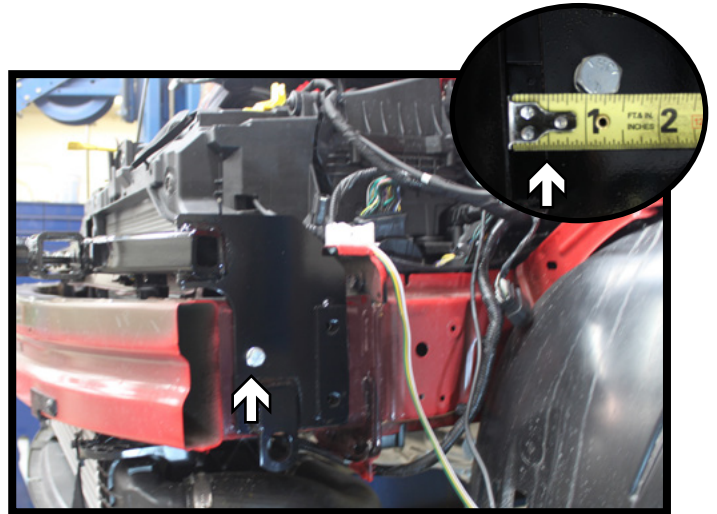
 Be aware of lines behind face when cutting!



10. Using a 1-1/4" hole saw, drill an access hole on top of the bumper as shown. Do this on both sides of the vehicle.



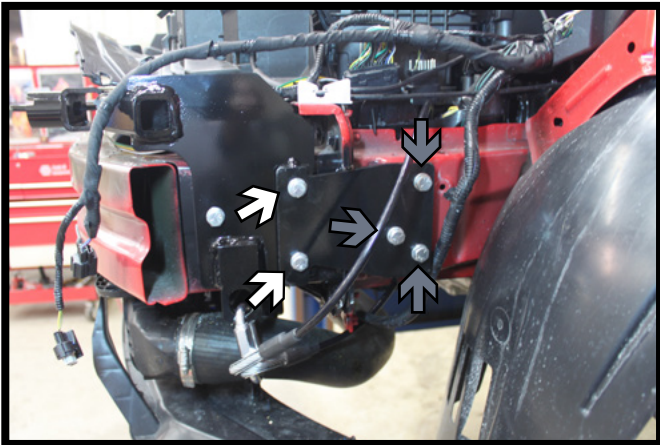
11. Using a 8MM socket, remove the three (3) screws from the latch support brace and pull the brace upwards away from the bumper for baseplate installation.



12. Position the baseplate onto the frame, flushing the bottom of the baseplate and frame. Leave a 1/2" gap from the front of the baseplate and the backside of the bumper (inset). Level and clamp into position.

Using a 13/32" drill bit, drill the front hole in the baseplate thru the frame. Install a 3/8"-16 x 1-1/4" bolt with a 3/8" lock washer into the hole and a 3/8" nut plate on the inside of the frame. Do this on both sides of the vehicle. Fully tighten both fasteners.

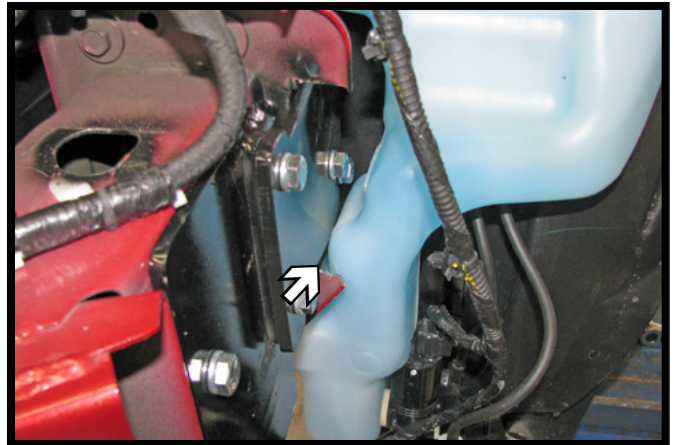
BX2650
2014 Ford Fiesta ST/SE (w/EcoBoost)
Installation Instructions



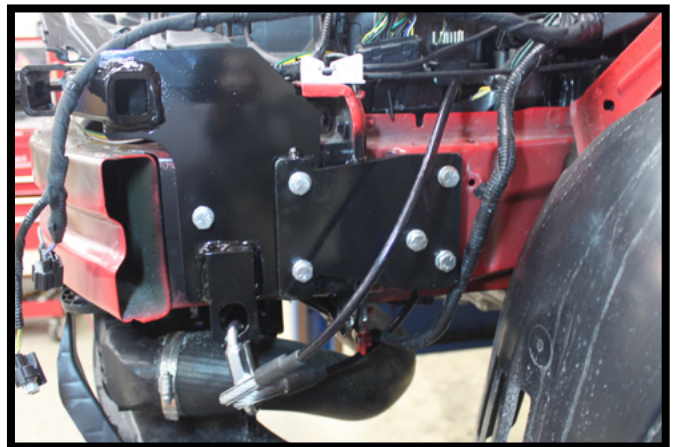
13. Using a 13/32" drill bit, drill the back baseplate holes thru the frame. Bolt the support bracket to the baseplate/frame with 3/8"-16 x 2" bolts, 3/8" lock washers and 3/8" nut plates (white).

Fully tighten the fasteners and then drill the remaining three (3) holes towards the back of the plate thru the frame. Install 3/8"-16 x 2" bolts with 3/8" lock washers into the holes with 3/8" nut plates on the inside of the frame (gray). Fully tighten all fasteners. Do this on both sides of the vehicle.

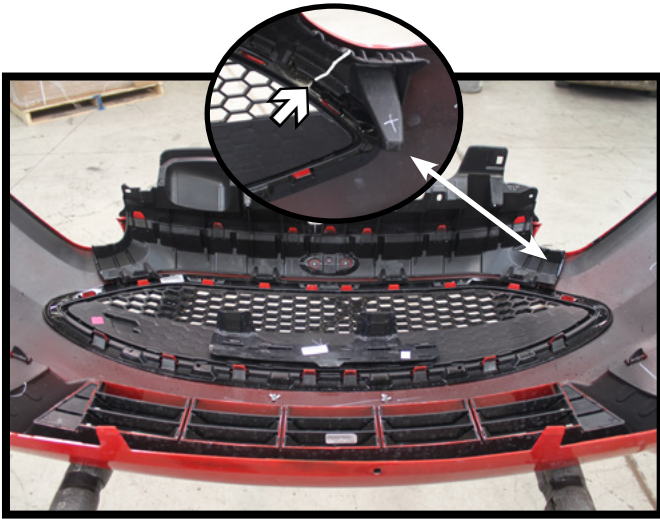
15. Attach the permanent baseplate safety cables to the provided convenience link on the baseplate. The photo above shows the recommended installation of the cables to frame of vehicle. Additional options may interfere with suggested mounting; in this case, secure the cables to a solid piece of the frame as described in the instructions included with the permanent baseplate safety cables. Be sure the safety cables do not rub against any hoses or moving parts. Do this on **BOTH** sides of the vehicle.




14. Reinstall the washer reservoir. Checking the clearance on the lower part of the reservoir making sure it is not rubbing on the baseplate. It should have minimum 1/16" clearance. If necessary pull the reservoir back and re-tighten the bolts. Reinstall the latch support brace.



BX2650
2014 Ford Fiesta ST/SE (w/EcoBoost)
Installation Instructions



16. On the backside of the fascia, trim off the inner layer of the fascia along the outer groove as shown for baseplate clearance. Do this on both sides of the fascia.

 Be aware not to cut into the outer layer of the fascia when cutting!



17. Hold the fascia as close to its original position, mark and trim the fascia around the convenience links and attachment tabs. Reinstall the fascia and headlights.

CUSTOMER SERVICE COMMITMENT

Blue Ox® is committed to providing you with exceptional customer care throughout your lifetime with our products. Our team is here to assist you with any questions you may have regarding the performance of your product. Simply call (402) 385-3051 and you can speak with our customer care team.

Additionally, please visit our website to see which rallies our Destination America team will be attending. For a nominal fee, our service technician will service your towing system to ensure it's in proper working condition. Also, as a commitment to our customers, should you visit our factory, you can stay at our full service Blue Ox® campground at no charge along with enjoying a factory tour.

Again, thank you for being our customer and for the confidence you have shown in the performance of our products. It is because of customers like you we enjoy the success we have today.

© 2014 Blue Ox
One Mill Road, Industrial Park
Pender, Nebraska 68047
Phone: (402) 385-3051
Fax: (402) 385-3360
www.blueox.com