



Strong As An Ox™

BX2223 Installation Instructions 2002 Honda Insight (Manual Transmission)

Serial No.

The front fascia, belly pan, metal bumper, air baffle, windshield washer reservoir and head light assemblies are removed for baseplate installation. Trimming of air dam is required. Holes need to be drilled. The BX8869 is available for this vehicle. Attachment Tabs are 24 inches center to center and a height of 13 1/2 inches.



1. Using the phillips screw driver, remove the three screws just forward of front tires, both sides.



2. Just forward of front tire on fascia corner, remove two phillips head screws with the phillips screw driver, both sides.



3. With the 10MM socket, remove two metric bolts and push pins from the belly pan, set aside. Pull fascia forward, disconnect electrical components and set fascia aside.



4. Using the 10MM socket, remove the four metric bolts on head light assembly, pull forward and unplug, both sides.



5. Remove the two metric bolts with the 10MM socket and set tow bracket aside.



6. Through holes on front side of metal bumper, remove four metric bolts with the 12MM socket and set metal bumper aside.



Strong As An Ox™



7. Using the 10MM socket remove the lower metric bolt from the air baffle, on the driver's side. Disconnect the hose clamp, pull baffle down to unsnap from top bolt and set aside.



9. Remove the two metric bolts from outer frame end cap and align front holes of item 2 with the frame holes on driver's side, insert bolts and tighten. Using item 2 as a template drill the four remaining holes into frame with the 13/32" drill bit. Remove item 2 from frame. Repeat process for passenger's side and item 3.



8. Using the 10MM socket remove three metric bolts from windshield washer reservoir, unplug electrical connections and set reservoir on top of engine.



10. Using the 12MM socket, remove the four metric bolts from frame end cap, pull forward and set aside, both sides.

11. Insert item 8 into frame ends while aligning items 2 and 3 with drilled holes. Install items 10 and 12 using item 11 as a spacer plate between item 2 as shown in drawing on page 4, do not tighten. **Be sure and use loctite on all bolts before tightening.** Reinstall end caps on frame ends.



Strong As An Ox™



12. Install item 4 to existing hole on bottom of frame using item 23 and 24. Attach items 9, 12 and 13 on the other end to item 2, according to drawing on page 4, both sides. Do not tighten bolts. **Be sure and use loctite on all bolts before tightening.**

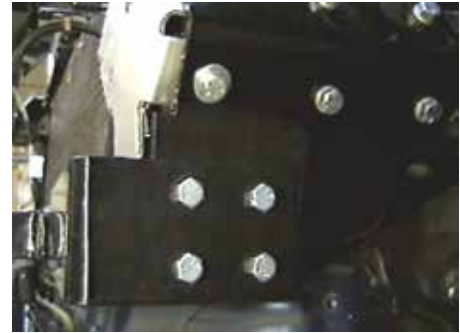


14. Reinstall air baffle on driver's side using items 6 and 18 on the lower bolt. Reconnect hose clamp. **Be sure and use loctite on all bolts before tightening.**



17. The dimensional variations between otherwise identical cars can be considerable. While the location and size of the holes in the baseplate were designed to allow for easy installation, it may be necessary to file a hole slightly to allow a bolt to clear.

18. Install the tow bar and safety cables according to the instructions included in their packages.



13. Align item 1 on the outside of items 2 and 3 holes, install items 9, 11, 12, and 13 according to drawing on page 4. Tighten all bolts on items 1, 2, 3 and 4. Trim air dam as needed to relieve area for item 1. **Be sure and use loctite on all bolts before tightening.**



15. Reinstall wind shield washer reservoir with existing upper bolt and items 5, 14, 16 and 17 on the middle attachment, according to drawing on page 4. **Be sure and use loctite on all bolts before tightening.**

16. Install items 7, 15 and 19 to lower reservoir according to drawing on page 4. **Be sure and use loctite on all bolts before tightening.** Reinstall head light assemblies, metal bumper, towing bracket and fascia. Plug in all electrical connections.



19. Do **not** substitute other devices if the tow bar pin and clip are lost.

20. **DEALER OR INSTALLER: BE CERTAIN THE USER RECEIVES THE INSTRUCTION SHEET.**

Parts List

Ref. No.	Qty.	Part No.	Description
1	1	61-5654	Weldment, Base Plate, BX2223
2	1	61-5655	Weldment, Bracket, DS, BX2223
3	1	61-5656	Weldment, Bracket, PS, BX2223
4	2	102-6141	Brace, 1/4 x 1 x 10, BX2223
5	1	102-6293	Flat, 16 Ga. x 1 x 2, BX2223
6	1	106-0366	Pipe, 1/4 sch 40 x 3/4 Inch
7	1	106-0367	Pipe, 1/4 sch 40 x 2 1/2 Inch
8	8	61-5208	3/8-16 Nut Plate, w/ Wire
9	10	201-0443	3/8-16 x 1, Hex Bolt, Grd, 5, ZP
10	8	201-0368	3/8-16 x 1 1/4, Hex Bolt, Grd, 5, ZP
11	20	203-0003	3/8 Flat Washer, ZP
12	18	203-0010	3/8 Lock Washer, ZP
13	10	202-0003	3/8-16 Hex Nut, ZP
14	1	201-0569	1/4-20 x 3/4, Hex Bolt, Grd, 5, ZP
15	3	203-0001	1/4 Flat Washer, ZP
16	1	202-0069	1/4-20 Whiz Nut, ZP
17	1	201-0655	6MM-1 X 30MM, Hex Bolt, Grd, 8.8, ZP
18	1	201-0710	6MM-1 X 50MM, Hex Bolt, Grd, 8.8, ZP
19	1	201-0709	6MM-1 X 80MM, Hex Bolt, Grd, 8.8, ZP
20	4	201-0418	8MM-1.25 X 35MM, Hex Bolt, Grd, 8.8, ZP
21	4	203-0102	8MM Lock Washer, ZP
22	4	203-0063	8MM Flat Washer, ZP
23	2	201-0592	12MM-1.5 X 25MM, Hex Bolt, Grd, 8.8, ZP
24	2	203-0105	12MM Lock Washer, ZP
25	2	201-0979	#12-14 x 1" Self Drilling Screw, ZP
26	2	201-0192	#10-32 x 1/2 Slot, Rd. Hd. Screw
27	2	203-0054	#10 Lock Washer
28	2	202-0047	#10-32 Hex Nut
29	2	101-5822	Adapter, 4 Way Connector
	2	226-0046	Baseplate Safety Cable, 36" CL III (Not Shown)
	2	229-0359	Quicklink, 3/8, ZP (Not Shown)

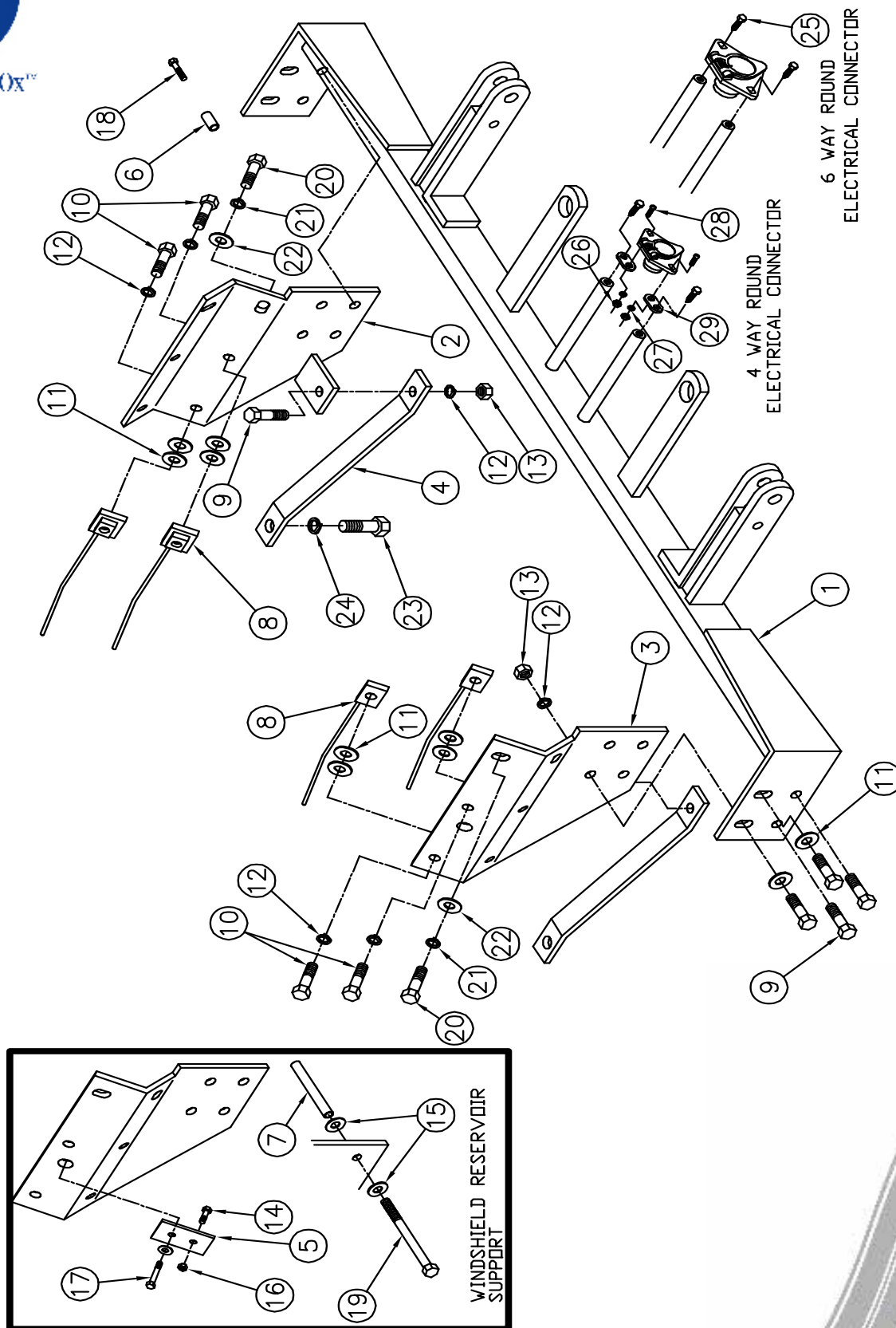
Tools Required

10MM Socket
12MM Socket
13MM Socket
Loctite Blue

19MM Socket
7/16" Socket
9/16" Socket

13/32" Drill Bit
Vise Grips
Phillips Screw Driver

IMPORTANT: Use only genuine factory replacement parts on your Base Plate. Do not substitute homemade or nontypical parts. If a bolt is lost or in need of replacement, for your safety and the preservation of your Base Plate, be sure to use a replacement bolt of the same grade (Usually Grade 5, refer to parts list). Repair parts may be ordered through your nearest **Blue Ox** dealer or distributor.



General Information

1. Ensure that your product(s) are registered online at www.blueox.com. It is crucial to register your product(s) so that you may be alerted of product offerings, updates, upgrades, maintenance and safety bulletins, and/or recalls.
2. **It is the owner's responsibility to inspect all towing equipment for cracked welds, missing or worn parts and loose bolts before each towing trip.** Be sure to use Loctite® Red on all bolts and tighten to the recommended specifications.
3. **It is the owner's responsibility to hook up all towing equipment per manufacturer's instructions/ recommendations.**
4. Remove the attachment tabs when not in use (if applicable).

Notice To Baseplate Installer

1. **It is YOUR responsibility to watch for:**

- Oil cooler and air conditioner lines
- Electrical wires and hoses
- Missing parts or attaching points on the frame

**** If the baseplate is improperly installed and is against a wire or hose, it could cause fluid leaks or electrical shorts some time after the actual baseplate installation.**

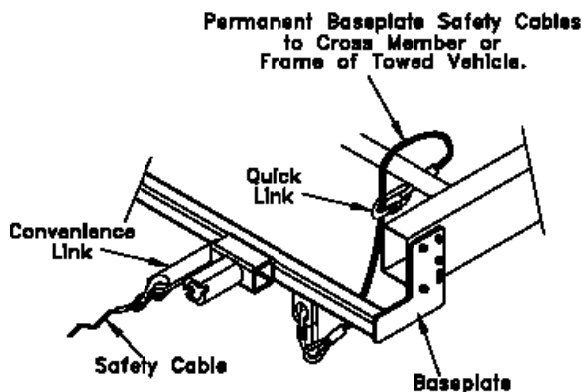
Permanent Baseplate Safety Cable Installation

Permanent baseplate safety cables are strongly recommended when towing a vehicle with a tow bar. The principle function of the permanent baseplate safety cables is to prevent the towed vehicle from breaking loose in the event the connection between the frame of the towed vehicle and the baseplate fails or becomes disconnected. The cables must be connected from the baseplate to the frame rail or cross member of the vehicle's frame. The illustrations below show the possible arrangements recommended by Blue Ox®. Each permanent baseplate safety cable must have an adequate weight rating for the towing system. The weight rating of the two (2) cables together will not qualify.

Do not mount the permanent baseplate safety cables against wires, hoses or brake lines.

These permanent baseplate safety cables should remain installed as long as the baseplate is installed on the vehicle. Permanent baseplate safety cables are to be used in conjunction with, and NOT a replacement for legally required safety cables attaching the towed vehicle to the towing vehicle.

OPTION #1



OPTION #2

