



# BX2199

## 2008-11 Ford Focus SES (Manual Trans.) Installation Instructions

**Serial Number**

**Please read BOTH these Installation Instructions and the General Towing Instructions before attempting to install or operate this equipment.**

1. Blue Ox® towing products and accessories are intended to be installed by Blue Ox® Dealers who are familiar with our products and have the equipment and knowledge to do “fit work”. When necessary, Blue Ox® Dealers can be found at [www.blueox.com](http://www.blueox.com) or by contacting our Customer Care Department at (402) 385-3051.
  
2. Many Blue Ox® Baseplates are designed to use existing holes and hardware to mount the baseplate to the towed vehicle. Even though bolts are there, do not assume they are adequate for baseplate mounting. Always use hardware supplied in the hardware kit or existing hardware specified in the Baseplate Installation Instructions.

Attachment Tab Height: 13”  
Attachment Tab Width: 20”

<b>Bolt Torque Specifications</b>		
Torque in Foot-Pounds for Metric Bolts		
Bolt Size	Grade 8.8	Grade 10.9
6MM	6	8
8MM	16	22
10MM	31	40
12MM	54	70
14MM	89	117

Confirm the towability and pre-towing procedures for your vehicle with the owner’s manual or contact the vehicle’s manufacturer for specific towing procedures.

<b>Bolt Torque Specifications</b>		
Torque in Foot-Pounds for Inch Bolts		
Bolt Size	Grade 5	Grade 8
1/4”	10	14
5/16”	19	29
3/8”	33	47
7/16”	54	78
1/2”	78	119
5/8”	154	230



## WARNING

Failure to read and follow these instructions could result in separation of the towed vehicle from the tow bar, causing property damage, loss of towed vehicle, personal injury or death.



# BX2199

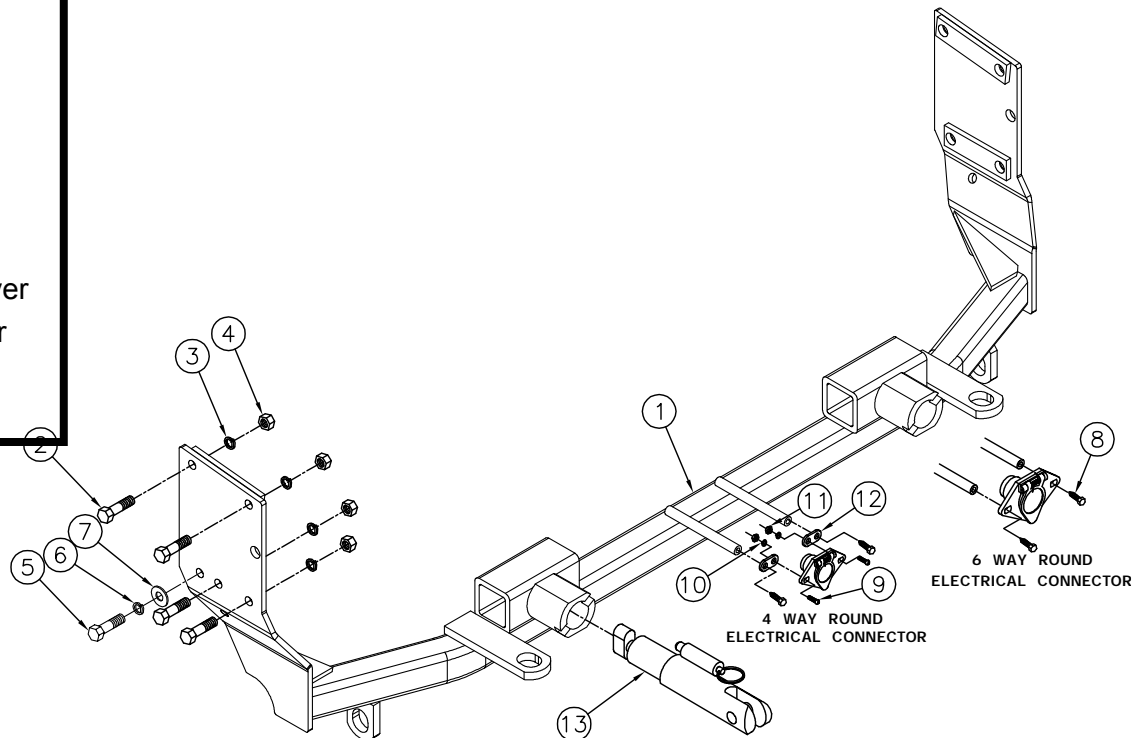
## 2008-11 Ford Focus SES (Manual Trans.) Installation Instructions

### Parts List

Ref. No.	Qty.	Part #	Description
1	1	61-6474	WELDMENT, BASEPLATE, BX2199
2	8	201-0368	3/8-16 X 1 1/4 HEX HEAD BOLT,GRD. 5
3	8	203-0010	3/8 LOCK WASHER, ZP
4	8	202-0003	3/8-16 HEX NUT, ZP
5	1	201-0655	6MM-1.0 X 30MM HEX BOLT, GRD8.8,ZP
6	1	203-0161	6MM, LOCK WASHER, ZP
7	1	203-0001	1/4 FLAT WASHER, ZP
8	2	201-0979	#12-14 x 1" Self Drilling Screw, ZP
9	2	201-0192	10-32 X 1/2 SLOT, RD. HD. SCREW
10	2	203-0054	#10 LOCK WASHER
11	2	202-0047	#10-32 HEX NUT
12	2	101-5822	ADAPTER, 4 WAY CONNECTOR
13	2	62-3468	ATT TAB ASSY, REM, SF/SB, 1 HOLE
	2	226-0046	BASEPLATE SAFETY CABLE, 36" CL III (Not Shown)
	2	229-0359	QUICKLINK, 3/8, ZP (Not Shown)
	2	290-0437	RECEIVER, CAP PLUG (BLK), (Not Shown)

- ### Tools Required

  - Loctite® RED
  - 6mm Socket
  - 7mm Socket
  - 8mm Socket
  - 10mm Socket
  - 7/16" Socket
  - 9/16" Socket
  - 13/32" Drill Bit
  - 30 Torx Socket
  - Phillips Screwdriver
  - Flat Screwdriver
  - Vise Grips
  - Utility Knife



### Important:

Use only genuine factory replacement parts on your baseplate. Do **NOT** substitute homemade or non-typical parts. If a bolt is lost or in need of replacement, for your safety and the preservation of your baseplate, be sure to use a replacement bolt of the same grade (In most cases it will be Grade 5, please reference the parts list above). Replacement parts may be ordered through your nearest Blue Ox® Dealer or Distributor. Failing to follow and/or altering these installation instructions in either installation or required equipment will void the manufacturer's warranty. Towing behind a non-motorized vehicle will void the warranty.



# BX2199

## 2008-11 Ford Focus SES (Manual Trans.) Installation Instructions

### Attachment Tabs:

Use only with motorhome mount tow bars or the BX8833 or BX88151 adapters. Removable tabs with only one hole will not attach to car mount tow bars or other adapters. The Acclaim may only be used with removable tab baseplates that have 23" or greater spaced tabs. The Adventurer may only be used with baseplates that have 16" – 36" spaced removable tabs. The Ambassador may only be used with 24" spaced removable tabs.

**Installation Notes:** The radiator cover, grille assembly, headlights, fascia and air dams are removed for installation. Reinstallation of the air dams is optional. If air dams are reinstalled, trimming of the air dams is required. Drilling is required.

The dimensional variations between otherwise identical vehicles can be considerable. While the baseplate was designed for easy installation, it may be necessary to tailor the baseplate slightly to compensate for auto manufacturer's tolerances. These minor adjustments may include filing a hole slightly, bending electrical rods or bending end plates.

The BX8848 4-Diode Wiring Kit is recommended for this vehicle.

Handling of some cosmetic parts when installing this product may require the use of protective covers, rags, specialty tools, etc. to prevent damage.



1. Remove four (4) Phillips push pins from radiator cover and lift to remove. Also remove grille assembly. Set pushpins, radiator cover and grille aside to be reinstalled later.



2. Using the 10mm socket, remove three (3) screws from the headlight assembly, disconnect electrical and pull forward to remove. Do this to both sides of the vehicle. Set screws and headlight assemblies aside to be reinstalled later.



# BX2199

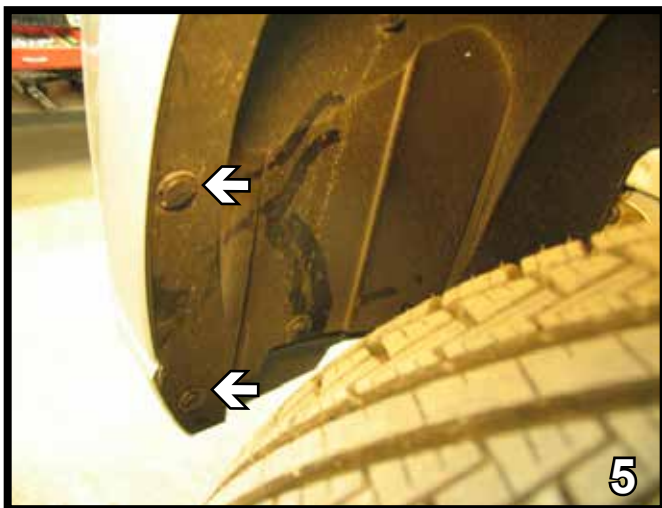
## 2008-11 Ford Focus SES (Manual Trans.) Installation Instructions



3. Remove two (2) pushpins from upper corner of fascia. Do this to both sides of the vehicle. Set pushpins aside to be reinstalled later.



4. Using 6MM socket, remove one (1) screw from edge of fascia, just inside the wheel well. Do this to both sides of the vehicle. Set screws aside to be reinstalled later.

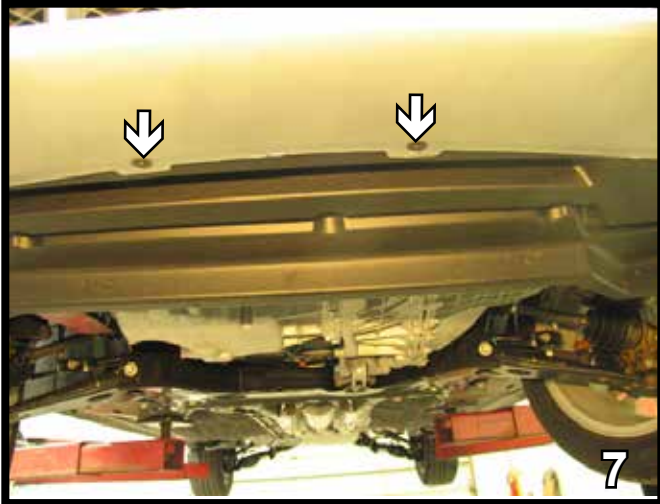


5. Remove two (2) pushpins from the wheel well using a flat screwdriver. Do this to both sides of the vehicle. Set pushpins aside to be reinstalled later.

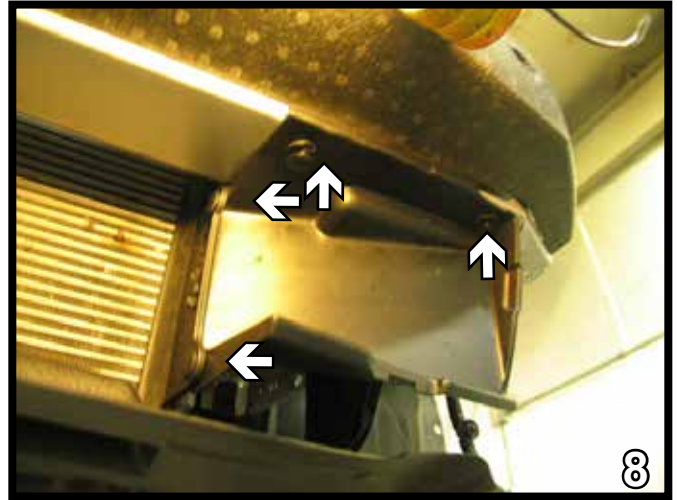


6. Using the 7mm socket, remove two (2) screws from the bottom corner of fascia. Do this to both sides of the vehicle. Set screws aside to be reinstalled later.

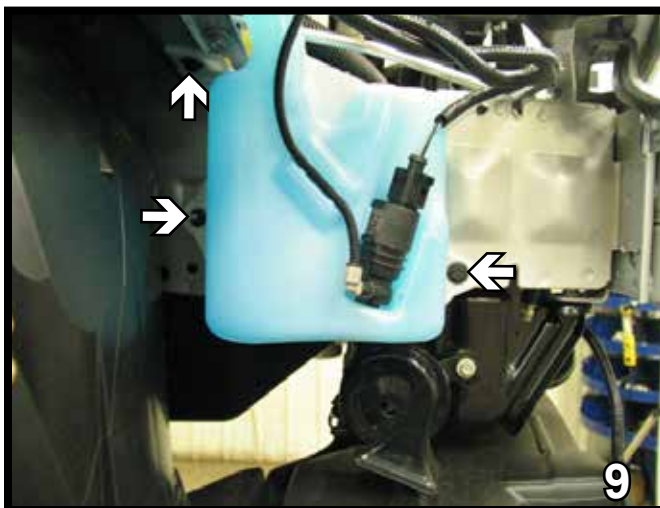
**BX2199**  
 2008-11 Ford Focus SES  
 (Manual Trans.)  
 Installation Instructions



7. Using the 7MM socket, remove two (2) screws from the bottom center of fascia. Set screws aside to be reinstalled later. Pull fascia corner out to the side of vehicle, both sides, then pull fascia forward and set aside carefully for later reinstallation. Unplug the fog lights.



8. Using a flat screwdriver, remove four (4) pushpins. Do this to both one sides of the vehicle. Remove the air dam. Set pushpins and air dam aside to be reinstalled later.



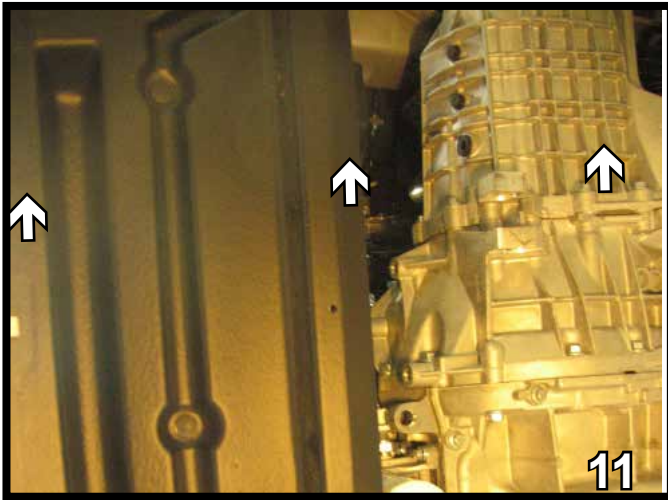
9. Using the 10mm socket, remove three (3) metric bolts from the windshield washer tank. Set bolts and tank aside to be reinstalled later.



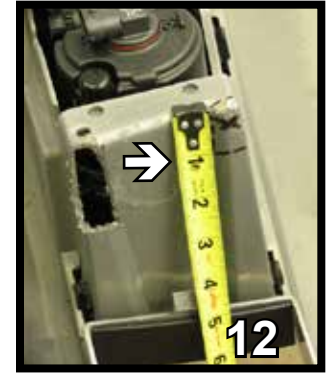
10. Using the 7MM socket, remove the screw from the wheel well. Set screw aside to be reinstalled later.

## BX2199

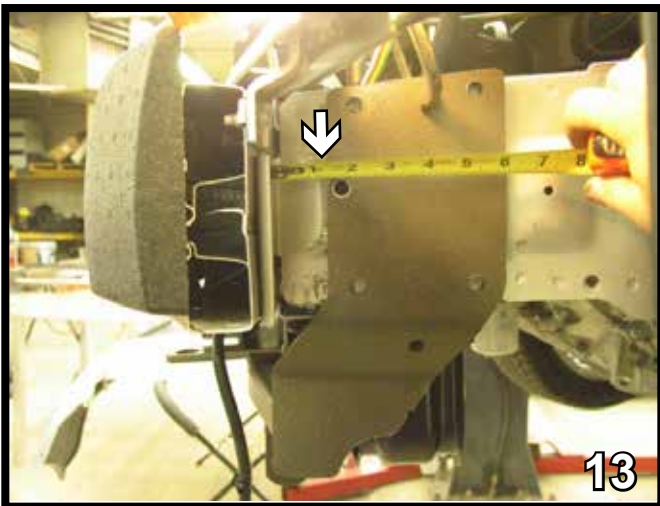
### 2008-11 Ford Focus SES (Manual Trans.) Installation Instructions



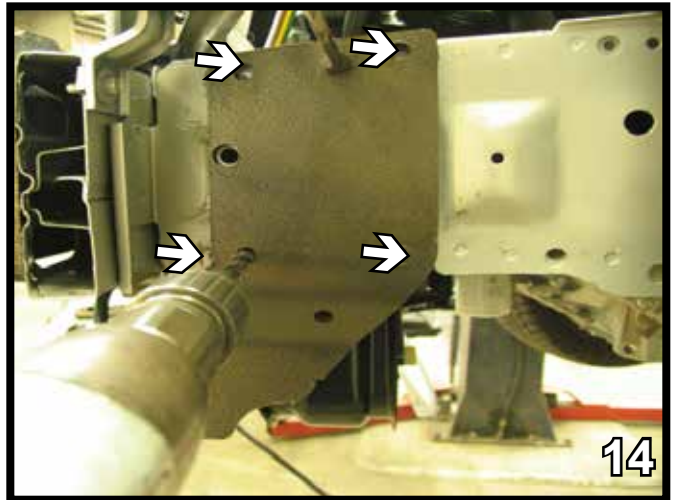
11. Using the flat screwdriver, remove three (3) pushpins on the bottom and remove the black plastic piece. Set pushpins and plastic aside to be reinstalled later.



12. Using the utility knife, on the inside of the fascia trim the fog light housing bumps, on the bottom trim back 2" and on the top trim 1-1/2", flush with the plastic surface.



13. Slide the baseplate onto the frame rails 1- 1/2" back from the bumper bracket aligning the front air baffle hole with the front middle hole of the baseplate. Align the top edge of the endplate with the top edge of the frame rail and clamp in place using the large vise grips. Hold the fascia up to its original position and verify the convenience links, electrical rods and attachment tabs come through the fascia opening.



14. Using the baseplate as a template, drill four (4) corner holes into the frame webbing with the 13/32" drill bit. Insert 3/8"-16 x 1-1/4" hex bolts into holes and tighten to the 1/4" lock washers and 3/8"-16 hex nuts.

**BE SURE TO USE LOCTITE® RED ON ALL BOLTS BEFORE TIGHTENING. TIGHTEN ALL BOLTS ACCORDING TO THE TORQUE CHART ON THE FRONT PAGE OF THESE INSTRUCTIONS OR ON PAGE 3 OF THE BASEPLATE TOWING GENERAL INSTRUCTIONS.**

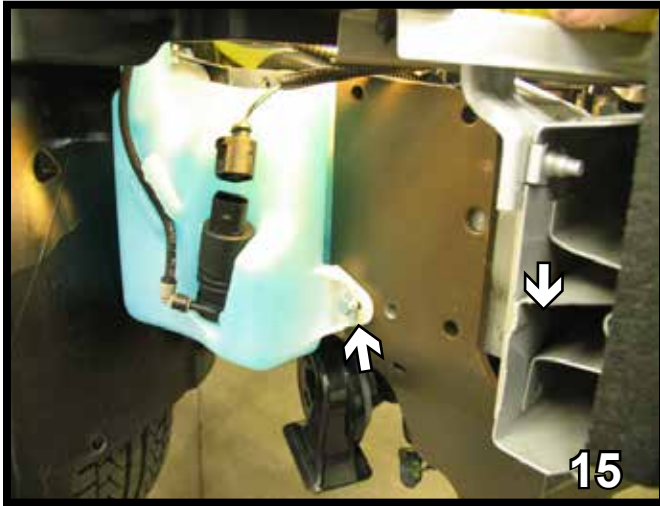
When using power drills be aware of the dangers of torque and drill bit length.



## BX2199

### 2008-11 Ford Focus SES (Manual Trans.)

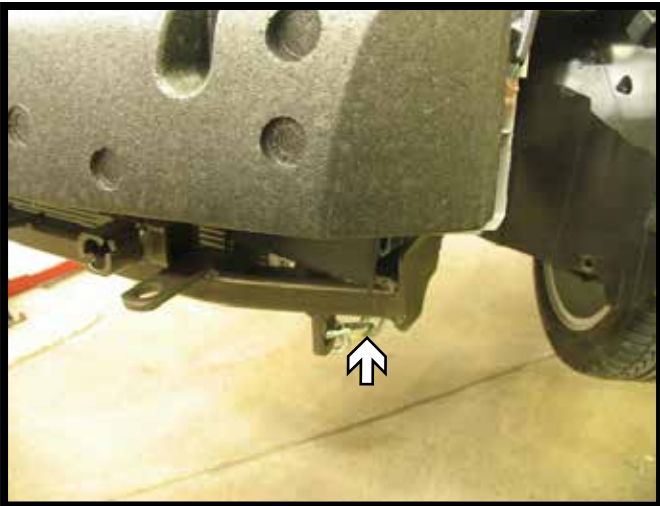
### Installation Instructions



15. On the passenger side, do the same thing but there is an extra hole to reinstall the windshield washer tank in that hole use the longer 6MM bolt.



16. Trim the air dam, from the to edge take off 2-3/4". This allows clearance for the baseplate.



17. Attach the permanent baseplate safety cables to the provided convenience link on the baseplate (see grey arrow). The photo above shows the recommended installation of the cables to frame of vehicle (see white arrow). Additional options may interfere with suggested mounting; in this case secure the cables to a solid piece of the frame as described in the instructions included with the permanent baseplate safety cables. Be sure the safety cables do not rub against any hoses or moving parts. Do this to both sides of the vehicle.

Be sure that **ALL** electrical connections are plugged in properly and functioning **BEFORE** installing the fascia.

22. Reinstall air dams, fascia, headlights, grille assembly, radiator cover, pushpins, bolts and screws. *Note: Air dams may be left off vehicle or hold air dams just below original location and mark and trim the air dams to allow baseplate to fit.*

Install the tow bar and safety cables according to the instructions provided in their packages. When demonstrating this to the customer, be sure to include all the contents and packages.

Do **NOT** substitute other devices if the tow bar pins and clips are misplaced.



**BX2199**  
2008-11 Ford Focus SES  
(Manual Trans.)  
Installation Instructions



**Shown without removable tabs installed.**



**Shown with removable tabs installed.**

If the baseplate is in an accident, it must be replaced. DO NOT use it again! An accident can cause unseen damage and using it again could result in more damage or serious injury. DO NOT use the baseplate if it is damaged or missing parts.

**DEALER or INSTALLER:**

**Be certain the user receives the instruction sheets for their products.**

**Customer Service Commitment**

Blue Ox is committed to providing you with exceptional customer care throughout your lifetime with our products. Our team is here to assist you with any questions you may have regarding the performance of your product. Simply call 1-402-385-3051 and you can speak with our customer care team.

Additionally, please visit our website to see which rallies our Destination America team will be attending. For a nominal fee, our service technician will service your towing system to ensure it's in proper working condition. Also as a commitment to our customers, should you visit our factory you can stay at our full service Blue Ox campground at no charge along with enjoying a factory tour.

Again thank you for being our customer and for the confidence you have shown in the performance of our products. It is because of customers like you we enjoy the success we have today





# General Information

1. Ensure that your product(s) are registered online at [www.blueox.com](http://www.blueox.com). It is crucial to register your product(s) so that you may be alerted of product offerings, updates, upgrades, maintenance and safety bulletins, and/or recalls.
2. **It is the owner's responsibility to inspect all towing equipment for cracked welds, missing or worn parts and loose bolts before each towing trip.** Be sure to use Loctite® Red on all bolts and tighten to the recommended specifications.
3. **It is the owner's responsibility to hook up all towing equipment per manufacturer's instructions/recommendations.**
4. Remove the attachment tabs when not in use (if applicable).

## Notice To Baseplate Installer

### 1. It is YOUR responsibility to watch for:

- Oil cooler and air conditioner lines
- Electrical wires and hoses
- Missing parts or attaching points on the frame

\*\* If the baseplate is improperly installed and is against a wire or hose, it could cause fluid leaks or electrical shorts some time after the actual baseplate installation.

## Permanent Baseplate Safety Cable Installation

Permanent baseplate safety cables are strongly recommended when towing a vehicle with a tow bar. The principle function of the permanent baseplate safety cables is to prevent the towed vehicle from breaking loose in the event the connection between the frame of the towed vehicle and the baseplate fails or becomes disconnected. The cables must be connected from the baseplate to the frame rail or cross member of the vehicle's frame. The illustrations below show the possible arrangements recommended by Blue Ox®. Each permanent baseplate safety cable must have an adequate weight rating for the towing system. The weight rating of the two (2) cables together will not qualify.

***Do not mount the permanent baseplate safety cables against wires, hoses or brake lines.***

These permanent baseplate safety cables should remain installed as long as the baseplate is installed on the vehicle. Permanent baseplate safety cables are to be used in conjunction with, and NOT a replacement for legally required safety cables attaching the towed vehicle to the towing vehicle.

### OPTION #1

Permanent Baseplate Safety Cables to Cross Member or Frame of Towed Vehicle.



### OPTION #2

Permanent Baseplate Safety Cables to Cross Member or Frame of Towed Vehicle.

