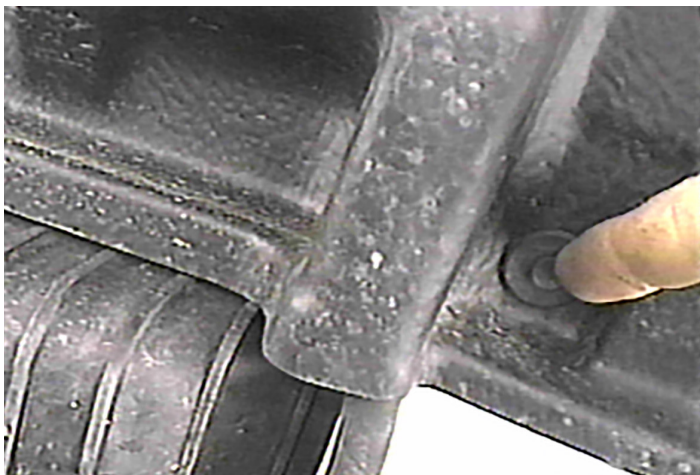




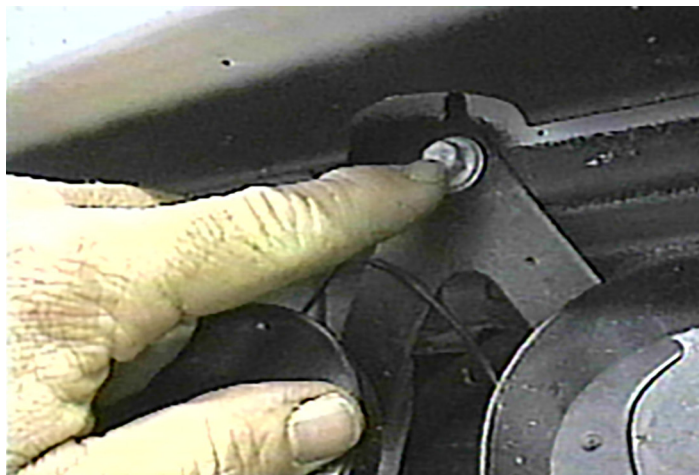
BX2161 Installation Instructions
1997-01 Ford E-150 Van
V-6 4.2L.

Serial No.

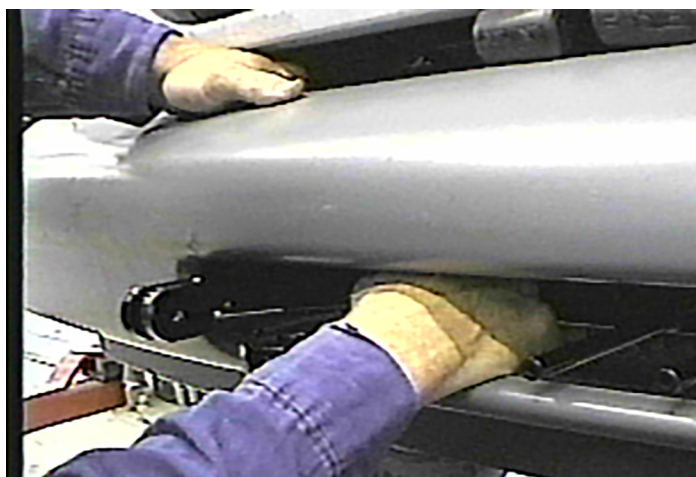
The front bumper is removed for baseplate installation. Holes need to be drilled. The attachment tabs are 24 inches center to center and 17 1/2 inches height. Model Notes: 1 and 38.



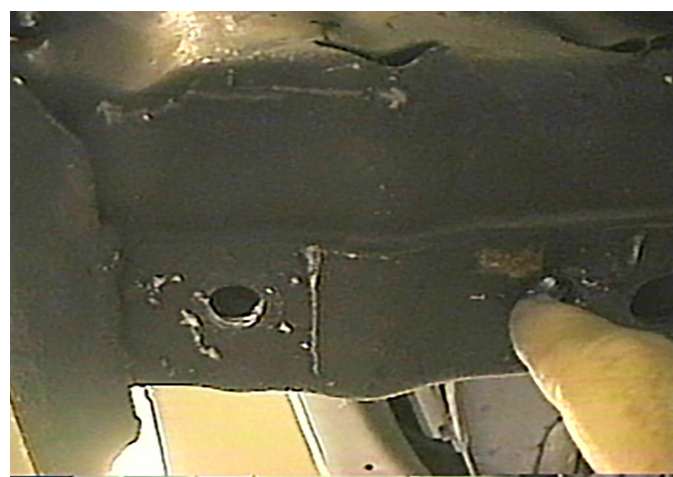
1. Remove two push pins from belly pan and set aside.



2. Using the 10MM socket, loosen the metric bolt on the horn bracket. Rotate horn bracket to center of vehicle and tighten metric bolt.



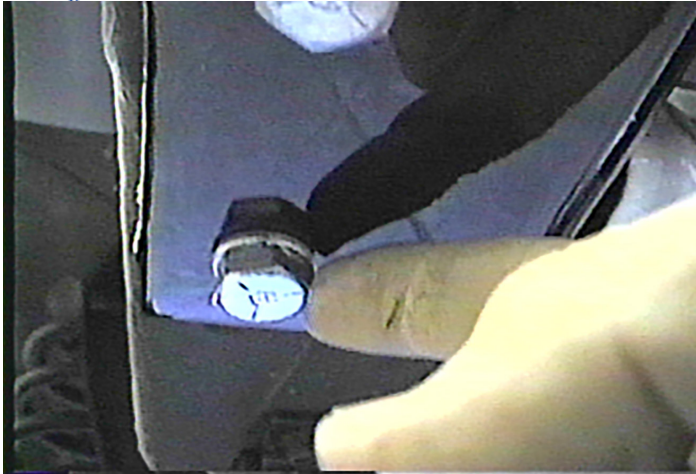
3. There are four metric bolts to remove on the metal bumper, using a 21MM socket. Set metal bumper aside.



4. There are two small existing holes on the bottom of the frame ends. Using the 17/32" drill bit, drill out the back hole.



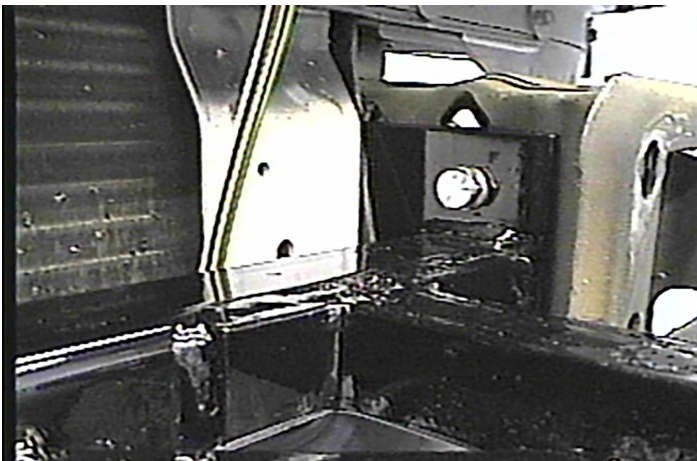
Strong As An Ox™



5. Hold item 1 to align with back drilled hole. Insert items 3 and 4 into drilled hole, Item 2 into frame end, and tighten. **Be sure and use loctite on all bolts before tightening.**



6. Using the base plate as a template, drill the remaining hole, with the 17/32" drill bit, on frame bottom, each side. Install items 2, 3, and 4 into place, refer to drawing on last page. **Be sure and use loctite on all bolts before tightening.**



7. Drill the remaining holes on the inside of frame with the 17/32". Install items 2, 3, and 4 according to drawing on last page. **Be sure and use loctite on all bolts before tightening.**
8. Replace metal bumper and rotate horn bracket back to its original position.
9. The dimensional variations between otherwise identical cars can be considerable. While the location and size of the holes in the baseplate were designed to allow for easy installation, it may be necessary to file a hole slightly to allow a bolt to clear.
10. Install the tow bar and safety cables according to the instructions included in their packages.
11. Do **not** substitute other devices if the tow bar pin and clip are lost.
12. **DEALER OR INSTALLER: BE CERTAIN THE USER RECEIVES THE INSTRUCTION SHEET.**



Tools Required

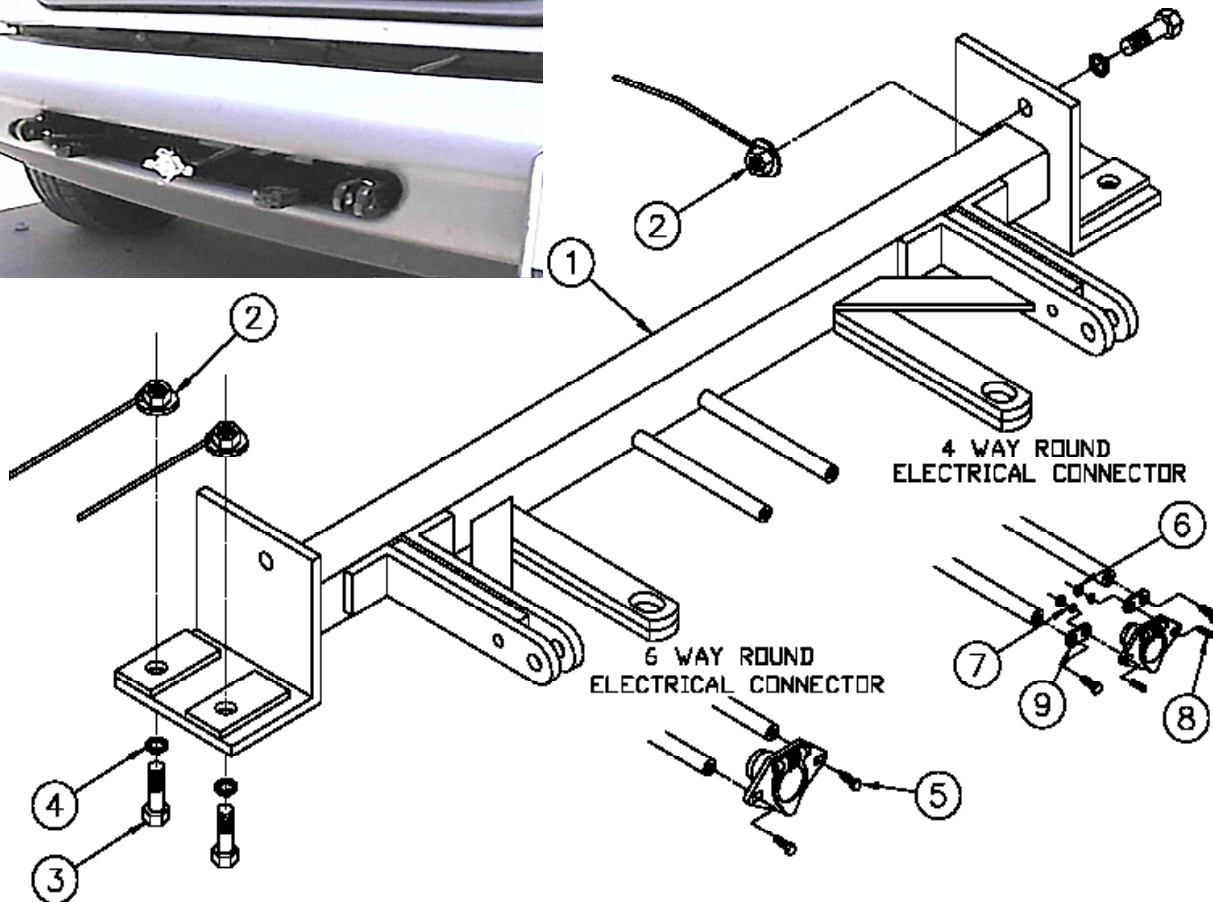
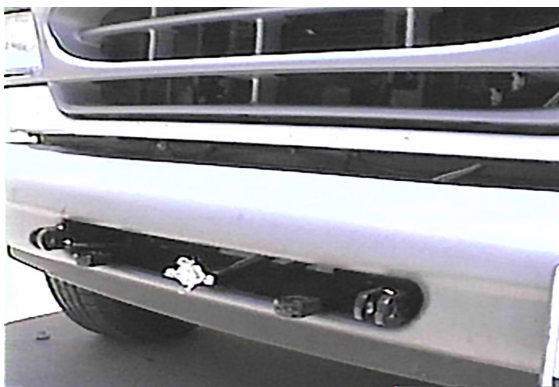
21MM Socket
10MM Socket

Loctite Blue
3/4" Wrench

17/32" Drill Bit
Vise Grips

Parts List

| Ref. No. | Qty. | Part No. | Description |
|----------|------|----------|--------------------------------------|
| 1 | 1 | 61-5626 | Weldment, Base Plate, BX2161 |
| 2 | 6 | 61-4029 | Weldment, 1/2-13, Whiz Nut with Wire |
| 3 | 6 | 201-0051 | 1/2-13 x 1 1/2 Hex Bolt, Grd. 5, ZP |
| 4 | 6 | 203-0012 | 1/2 Lock Washer, ZP |
| 5 | 2 | 201-0979 | #12-14 x 1" Self Drilling Screw, ZP |
| 6 | 2 | 202-0047 | #10-32 Hex Nut |
| 7 | 2 | 203-0054 | #10 Lock Washer |
| 8 | 2 | 201-0192 | #10-32 x 1/2 Slot, Rd. Hd. Screw |
| 9 | 2 | 101-5822 | Adapter, 4 Way Connector |



IMPORTANT: Use only genuine factory replacement parts on your Base Plate. Do not substitute homemade or nontypical parts. If a bolt is lost or in need of replacement, for your safety and the preservation of your Base Plate, be sure to use a replacement bolt of the same grade (Usually Grade 5, refer to parts list). Repair parts may be ordered through your nearest **Blue Ox** dealer or distributor.

General Information

1. Ensure that your product(s) are registered online at www.blueox.com. It is crucial to register your product(s) so that you may be alerted of product offerings, updates, upgrades, maintenance and safety bulletins, and/or recalls.
2. **It is the owner's responsibility to inspect all towing equipment for cracked welds, missing or worn parts and loose bolts before each towing trip.** Be sure to use Loctite® Red on all bolts and tighten to the recommended specifications.
3. **It is the owner's responsibility to hook up all towing equipment per manufacturer's instructions/recommendations.**
4. Remove the attachment tabs when not in use (if applicable).

Notice To Baseplate Installer

1. It is YOUR responsibility to watch for:

- Oil cooler and air conditioner lines
- Electrical wires and hoses
- Missing parts or attaching points on the frame

** If the baseplate is improperly installed and is against a wire or hose, it could cause fluid leaks or electrical shorts some time after the actual baseplate installation.

Permanent Baseplate Safety Cable Installation

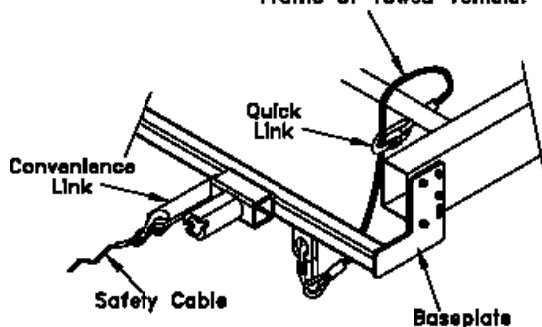
Permanent baseplate safety cables are strongly recommended when towing a vehicle with a tow bar. The principle function of the permanent baseplate safety cables is to prevent the towed vehicle from breaking loose in the event the connection between the frame of the towed vehicle and the baseplate fails or becomes disconnected. The cables must be connected from the baseplate to the frame rail or cross member of the vehicle's frame. The illustrations below show the possible arrangements recommended by Blue Ox®. Each permanent baseplate safety cable must have an adequate weight rating for the towing system. The weight rating of the two (2) cables together will not qualify.

Do not mount the permanent baseplate safety cables against wires, hoses or brake lines.

These permanent baseplate safety cables should remain installed as long as the baseplate is installed on the vehicle. Permanent baseplate safety cables are to be used in conjunction with, and NOT a replacement for legally required safety cables attaching the towed vehicle to the towing vehicle.

OPTION #1

Permanent Baseplate Safety Cables to Cross Member or Frame of Towed Vehicle.



OPTION #2

Permanent Baseplate Safety Cables to Cross Member or Frame of Towed Vehicle.

