



**BX2156 Installation Instructions  
1998-01 Mercury Grand Marquis**

**Serial No.**

The front bumper and headlights are removed for baseplate installation. Holes need to be drilled. If customer is using a car mounted tow bar it is necessary to use either a BX88133 or a BX88135.



1. Remove Phillips screws from side of turn lights.



4. Remove the push pins forward of the front tires.



2. Open hood and remove bolt holding turn lights. Pull lights out and set aside.



5. Remove the screws from the bottom of the bumper fascia.

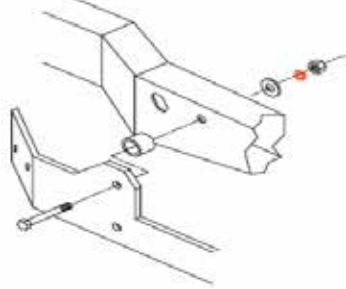
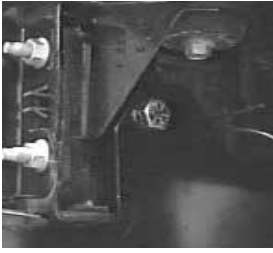


3. Remove the bolts from bumper fascia exposed once turn lights are removed.

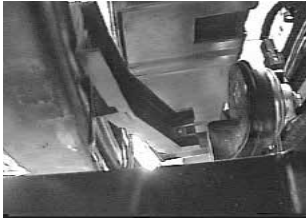


6. More screws from the bottom of the bumper fascia. Remove fascia and set aside.

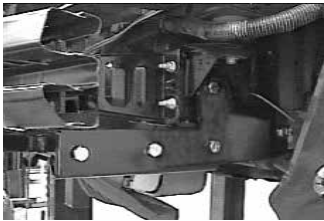
**Automatic**



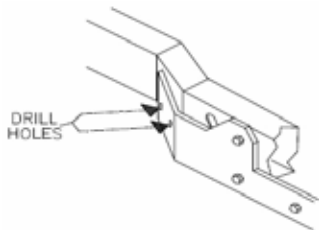
- 7. Remove the existing bolt from the frame and bolt the side plates with the spacers to the side of each frame using the 1/2 x 4" Hex bolt and 1/2" hardware.



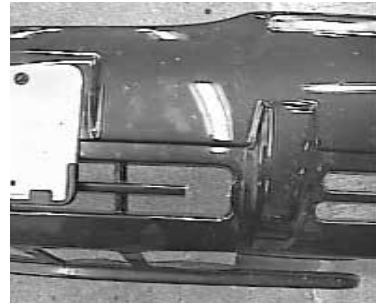
- 8. The pieces extending down from the bumper need to be pushed up so they do not interfere.



- 9. Bolt the baseplate to the side plates use the 1/2" hardware as shown in drawing on the last page. Tighten bolts according to the chart in the General Instruction Sheet.



- 10. Drill the remaining holes for the side plates. Use the hardware as shown in drawing. The wire nut plates can be inserted through the slots just above the side plates. Tighten bolts.



- 11. Hold the bumper facia up to its original position and mark areas which will allow the attachment tabs to extend through.



- 12. Both sides of the grill need to be trimmed out.



## Tools Required

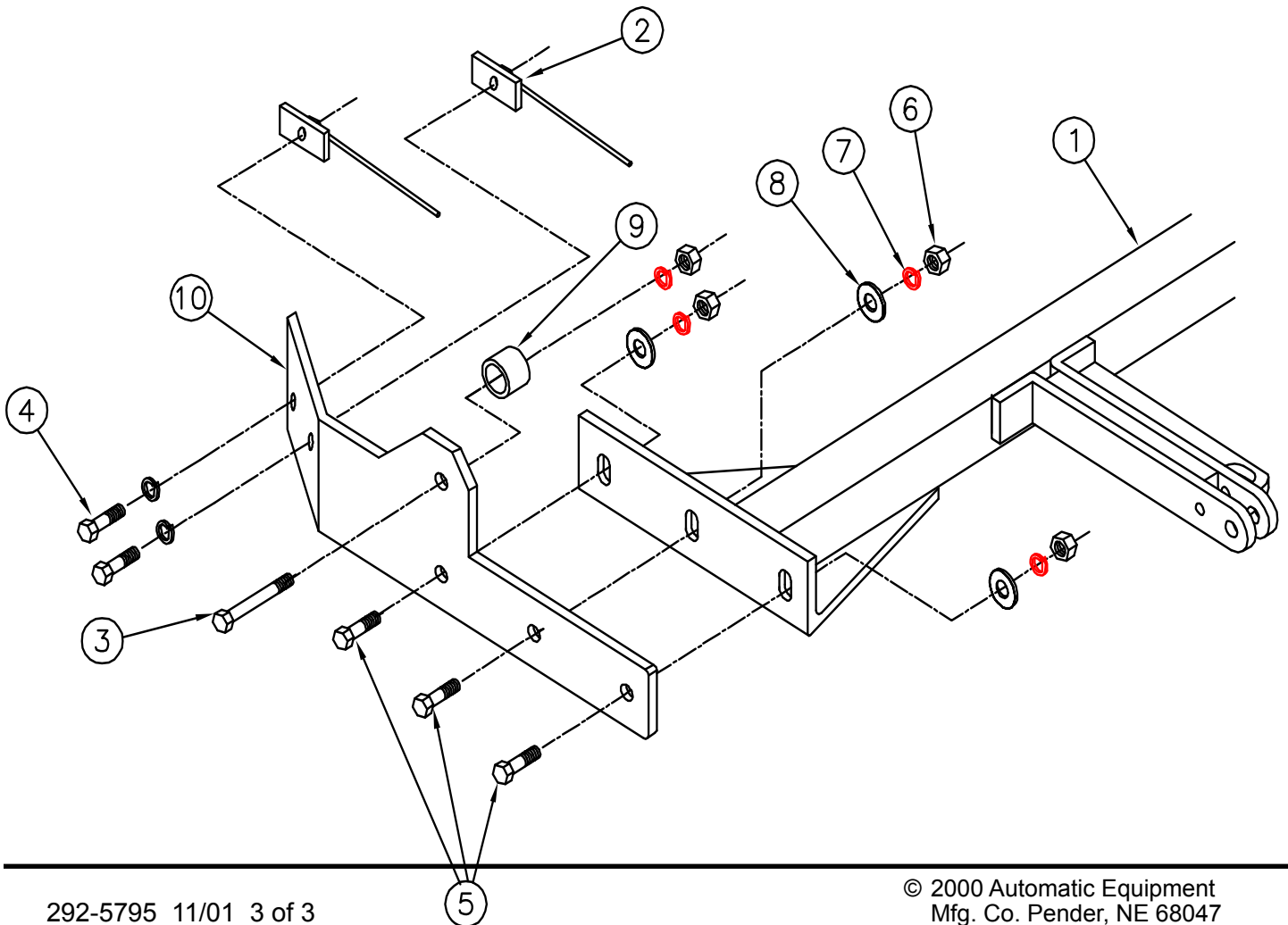
19mm Wrench  
3/4" Wrench  
8mm Wrench

Loctite Blue  
Vise Grips  
Phillips Screw Driver

17/32" Drill Bit  
11mm Wrench  
Utility Knife

## Parts List

Ref. No.	Qty.	Part No.	Description
1	1	61-5552	Weldment, Base Plate, BX2156
2	4	61-3799	Weldment, 1/2 Nut Plate w/Wire
3	2	201-0581	1/2 -13 x 4 Hex Bolt, Grade 5, ZP
4	4	201-0068	1/2-13 x1 3/4 Hex Bolt, Grade 5, ZP
5	6	201-0051	1/2-13 x 1 1/2 Hex Bolt, Grade 5, ZP
6	8	202-0005	1/2-13 Hex Nut, ZP
7	12	203-0012	1/2 Lock Washer, ZP
8	6	203-0005	1/2 Flat Washer, ZP
9	2	106-0357	Spacer Tube
10	1	101-6069	Bracket, PS, BX2156
11	1	101-6068	Bracket, DS, BX2156 (not shown)



# General Information

1. Ensure that your product(s) are registered online at [www.blueox.com](http://www.blueox.com). It is crucial to register your product(s) so that you may be alerted of product offerings, updates, upgrades, maintenance and safety bulletins, and/or recalls.
2. **It is the owner's responsibility to inspect all towing equipment for cracked welds, missing or worn parts and loose bolts before each towing trip.** Be sure to use Loctite® Red on all bolts and tighten to the recommended specifications.
3. **It is the owner's responsibility to hook up all towing equipment per manufacturer's instructions/recommendations.**
4. Remove the attachment tabs when not in use (if applicable).

## Notice To Baseplate Installer

### 1. It is YOUR responsibility to watch for:

- Oil cooler and air conditioner lines
- Electrical wires and hoses
- Missing parts or attaching points on the frame

\*\* If the baseplate is improperly installed and is against a wire or hose, it could cause fluid leaks or electrical shorts some time after the actual baseplate installation.

## Permanent Baseplate Safety Cable Installation

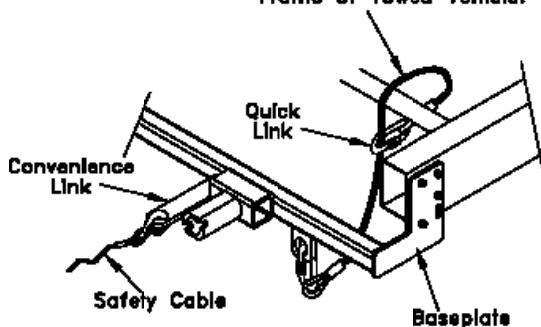
Permanent baseplate safety cables are strongly recommended when towing a vehicle with a tow bar. The principle function of the permanent baseplate safety cables is to prevent the towed vehicle from breaking loose in the event the connection between the frame of the towed vehicle and the baseplate fails or becomes disconnected. The cables must be connected from the baseplate to the frame rail or cross member of the vehicle's frame. The illustrations below show the possible arrangements recommended by Blue Ox®. Each permanent baseplate safety cable must have an adequate weight rating for the towing system. The weight rating of the two (2) cables together will not qualify.

***Do not mount the permanent baseplate safety cables against wires, hoses or brake lines.***

These permanent baseplate safety cables should remain installed as long as the baseplate is installed on the vehicle. Permanent baseplate safety cables are to be used in conjunction with, and NOT a replacement for legally required safety cables attaching the towed vehicle to the towing vehicle.

### OPTION #1

Permanent Baseplate Safety Cables to Cross Member or Frame of Towed Vehicle.



### OPTION #2

Permanent Baseplate Safety Cables to Cross Member or Frame of Towed Vehicle.

