

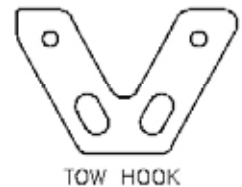


## Installation Instructions BX2150 Mercury Cougar 2000

Serial No.

The front bumper facia and top center grill need to be removed for installation of this baseplate. The inner grill molding needs to be removed or trimmed to allow the attachment tabs to extend out of the facia. The inner plastic needs to be trimmed. DEALER OR INSTALLER: BE CERTAIN THE USER RECEIVES THE INSTRUCTION SHEET.

1. Open the hood and remove the two screws holding the center grill and set aside. Remove the plastic push pins holding the top of the bumper facia.
2. Remove the screws (one plastic one regular) that are directly in front of the front tires. Pull the molding out and remove the hex nuts (10mm wrench) and backing plate which fasten the bumper facia to the fenders. Remove the license plate bracket and the plastic push pins just outboard of the license plate (one on each side).
3. The belly pan needs to be removed next. Remove the hex bolts from the back of the pan. When the bolts have been removed pull down on the piece and slide it out of the front end of the bumper facia. Once the belly pan is off disconnect the running light wiring. The bumper facia can now be removed.
4. The tow hooks on both sides of the vehicle need to be removed. There are three bolts holding each tow hook (use a 18, 15 and 13mm wrench). It will be easier to remove the tow hooks on the passenger side if you remove the horn (10mm wrench). See Figure 1. The horn from the drivers side can be removed to make it easier to reach the back bolts.
5. Notice the plastic extending down from the frame on each side of the vehicle. Each piece needs to be trimmed so the baseplate can be installed. Hold the baseplate up to the holes for the tow hooks and mark the plastic which needs to be trimmed.
6. Remove the sensor from its bracket on the drivers side of the vehicle. The bracket for the sensor can be bent back.
7. Use the 1/2" and 3/8" nuts, bolts and washers (as shown in the diagram) to fasten the baseplate to the vehicle (where the tow hooks were attached). Apply Loctite to each bolt. Tighten and torque hardware according to the General Instruction Sheet. See Figure 2
8. Replace the horn and sensor. The sensor will clip into the bracket that is on the base plate. Replace the electrical connections and bumper facia. The tow hooks will not be put back on once the baseplate is installed.
9. The plastic mesh in the grill opening will either have to be trimmed or completely removed for tabs to extend through.



**Figure 1**



**Figure 2**

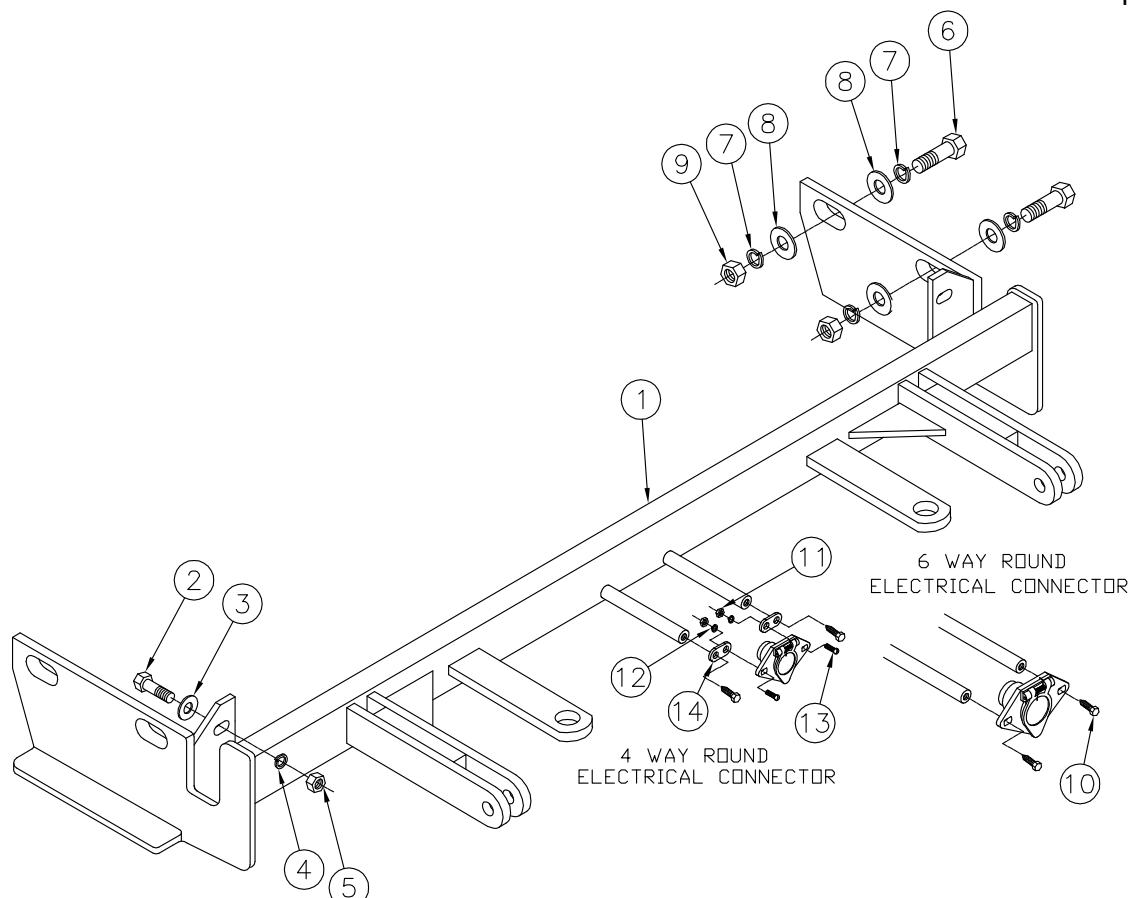
# Automatic

## Tools Required

8MM Wrench	10MM Wrench	13MM Wrench
15MM Wrench	18MM Wrench	9/16" Wrench
5/8" Wrench	3/4" Wrench	Flat Screw Driver
Phillips Screw Driver	Loctite Blue or Red	Utility Knife

## Parts List

Ref. No.	Qty.	Part No.	Description
1	1	61-5448	Weldment, Baseplate, BX2150
2	2	201-0440	3/8-16 x 1 1/2" Hex Bolt, Grade 5, ZP
3	2	203-0003	3/8" Flat Washer, ZP
4	2	203-0010	3/8" Lock Washer, ZP
5	2	202-0071	3/8-16 Hex Flange Whiz Lock Nut, ZP
6	4	201-0051	1/2-13 x 1 1/2" Hex Bolt, Grade 5, ZP
7	8	203-0012	1/2" Lock Washer, ZP
8	8	203-0005	1/2" Flat Washer, ZP
9	4	202-0005	1/2-13 Hex Nut, ZP
10	2	201-0979	#12-14 x 1" Self Drilling Screw, ZP
11	2	202-0047	#10-32 Hex Nut
12	2	203-0054	#10 Lock Washer
13	2	201-0192	#10-32 x 1/2" Slotted Rd. Hd. Screw
14	2	101-5822	Adapter, 4 Way



## General Information

1. Ensure that your product(s) are registered online at [www.blueox.com](http://www.blueox.com). It is crucial to register your product(s) so that you may be alerted of product offerings, updates, upgrades, maintenance and safety bulletins, and/or recalls.
2. **It is the owner's responsibility to inspect all towing equipment for cracked welds, missing or worn parts and loose bolts before each towing trip.** Be sure to use Loctite® Red on all bolts and tighten to the recommended specifications.
3. **It is the owner's responsibility to hook up all towing equipment per manufacturer's instructions/ recommendations.**
4. Remove the attachment tabs when not in use (if applicable).

## Notice To Baseplate Installer

1. **It is YOUR responsibility to watch for:**

- Oil cooler and air conditioner lines
- Electrical wires and hoses
- Missing parts or attaching points on the frame

**\*\* If the baseplate is improperly installed and is against a wire or hose, it could cause fluid leaks or electrical shorts some time after the actual baseplate installation.**

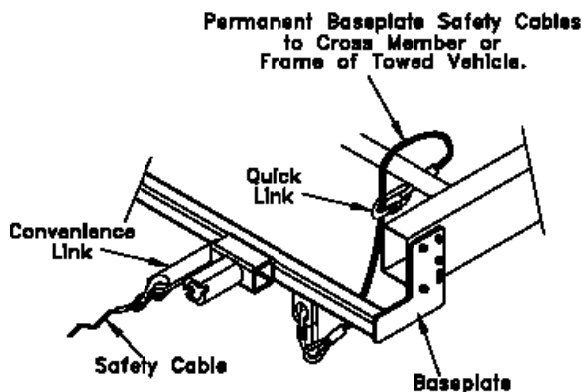
## Permanent Baseplate Safety Cable Installation

Permanent baseplate safety cables are strongly recommended when towing a vehicle with a tow bar. The principle function of the permanent baseplate safety cables is to prevent the towed vehicle from breaking loose in the event the connection between the frame of the towed vehicle and the baseplate fails or becomes disconnected. The cables must be connected from the baseplate to the frame rail or cross member of the vehicle's frame. The illustrations below show the possible arrangements recommended by Blue Ox®. Each permanent baseplate safety cable must have an adequate weight rating for the towing system. The weight rating of the two (2) cables together will not qualify.

***Do not mount the permanent baseplate safety cables against wires, hoses or brake lines.***

These permanent baseplate safety cables should remain installed as long as the baseplate is installed on the vehicle. Permanent baseplate safety cables are to be used in conjunction with, and NOT a replacement for legally required safety cables attaching the towed vehicle to the towing vehicle.

### OPTION #1



### OPTION #2

