



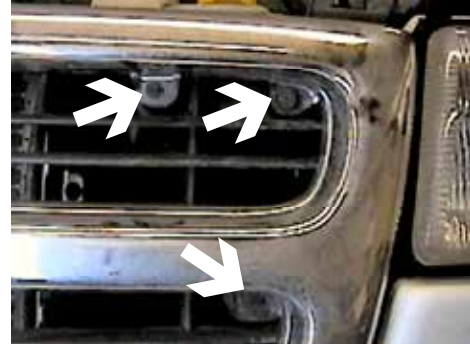
**BX1966 Installation Instructions**  
**2001-2003 Dodge Ram Van 1500/ 2500/3500**

Serial No.

**Strong As An Ox™** The metal bumper and bumper brackets are removed for baseplate installation. Drilling is required. Trimming of air dam on metal bumper is required. Bumper brackets are **not** reinstalled. The BX8869 is available for the vehicle. Attachment Tabs are 24 inches center to center and a height of 21 1/2 inches.



1. Remove two phillips head screws from behind grill center.



2. Remove three phillips head screws from grill, both sides and set grill aside.



3. Remove metric bolt just behind lower edge of metal bumper with the 19MM socket, both sides.



4. Just forward of front tire is one metric bolt to remove from metal bumper bracket using the 19MM socket, both sides.



5. Using the 19MM socket, remove two metric bolts from the back side of metal bumper, just behind grill area, pull bumper forward and set aside.



6. Remove two plastic inserts from metal bumper.



Strong As An Ox™



7. Using the 3/4" socket, remove the four metric bolts from bumper bracket, both sides and set aside. **Bumper bracket will not be reinstalled.**



8. Slide baseplate over frame ends and align baseplate holes with bumper bracket mount location. Install 1/2 x 1 3/4" hex bolts, flat and lock washers as shown in drawing on page 3, while maintaining a level position with the baseplate. **Be sure and use loctite on all bolts before tightening. Torque all bolts according to torque chart in General Instructions.**



9. Using the baseplate as a template, drill hole on the top side of frame with the 17/32" drill bit, both sides. Insert 1/2 x 1 1/4" hex bolt and lock washer into drilled hole and tighten 1/2" whiz nut, both sides. **Be sure and use loctite on all bolts before tightening. Torque all bolts according to torque chart in General Instructions.**

10. Reinstall metal bumper. Hold plastic insert to align with bumper opening, trim as needed and reinstall, both sides.

11. The dimensional variations between otherwise identical cars can be considerable. While the location and size of the holes in the baseplate were designed to allow for easy installation, it may be necessary to file a hole slightly to allow a bolt to clear.

12. Install the tow bar and safety cables according to the instructions included in their packages.

13. Do **not** substitute other devices if the tow bar pin and clip are lost.

14. **DEALER OR INSTALLER: BE CERTAIN THE USER RECEIVES THE INSTRUCTION SHEET.**



Strong As An Ox™

## Tools Required

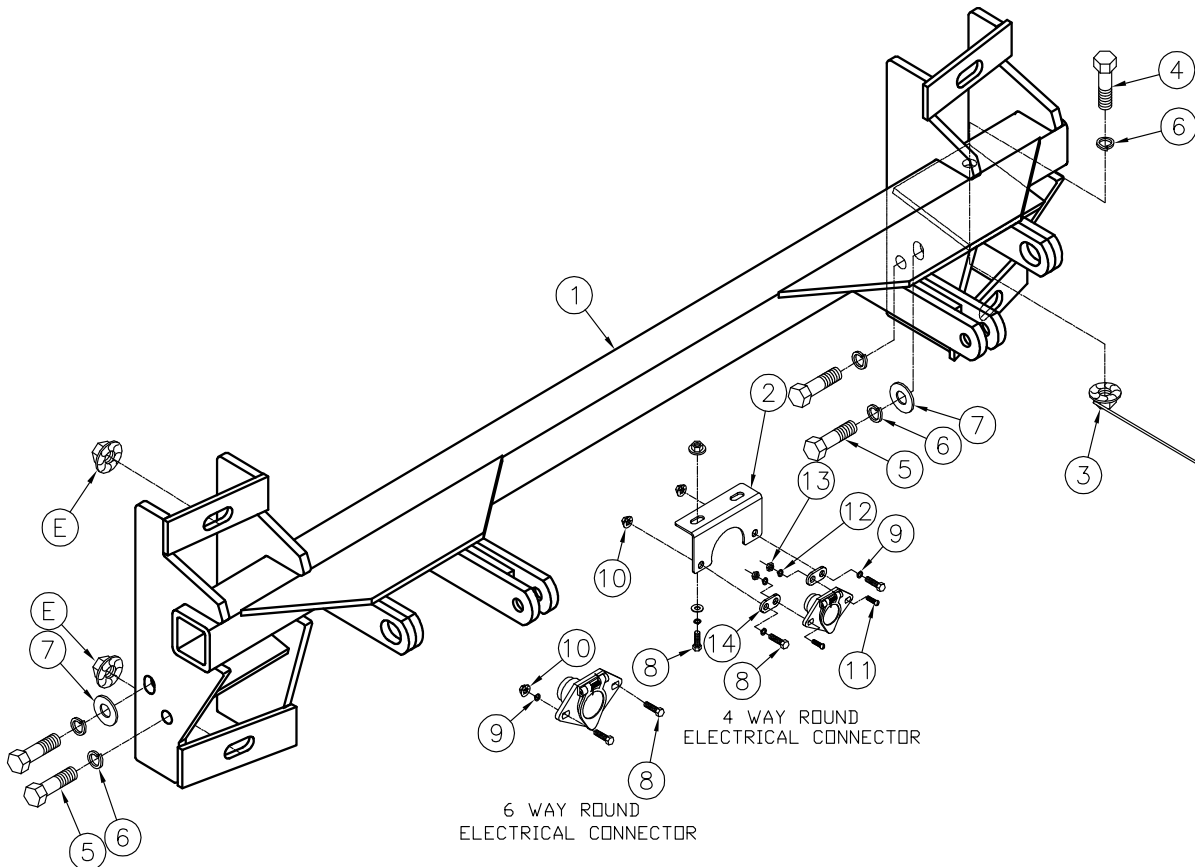
19MM Socket  
Utility Knife

3/4" Socket  
Loctite

17/32" Drill Bit  
Phillips Screw Driver

## Parts List

Ref. No.	Qty.	Part No.	Description
1	1	61-5989	Weldment, Base Plate, BX1966
2	1	101-6135	Electrical, Bracket, BX2160
3	2	61-4029	1/2-13 Whiz Nut, w/ 10" Wire
4	2	202-0011	1/2-13 x 1 1/4 Hex Bolt, Grd. 5, ZP
5	8	202-0068	1/2-13 x 1 3/4 Hex Bolt, Grd. 5, ZP
6	10	203-0012	1/2 Lock Washer, ZP
7	4	203-0005	1/2 Flat Washer, ZP
8	4	201-0569	1/4-20 x 3/4 Hex Bolt, Grd. 5, ZP
9	4	203-0008	1/4 Lock Washer, ZP
10	2	203-0001	1/4 Flat Washer, ZP
11	4	202-0069	1/4-20 Hex Whiz Nut, LocZP
12	2	201-0192	#10-32 x 1/2 Slot, Rd. Hd. Screw
13	2	203-0054	#10 Lock Washer
14	2	202-0047	#10-32 Hex Nut
15	2	101-5822	Adapter, 4 Way Connector



**IMPORTANT:** Use only genuine factory replacement parts on your Base Plate. Do not substitute homemade or nontypical parts. If a bolt is lost or in need of replacement, for your safety and the preservation of your Base Plate, be sure to use a replacement bolt of the same grade (Usually Grade 5, refer to parts list). Repair parts may be ordered through your nearest **Blue Ox** dealer or distributor.

# General Information

1. Ensure that your product(s) are registered online at [www.blueox.com](http://www.blueox.com). It is crucial to register your product(s) so that you may be alerted of product offerings, updates, upgrades, maintenance and safety bulletins, and/or recalls.
2. **It is the owner's responsibility to inspect all towing equipment for cracked welds, missing or worn parts and loose bolts before each towing trip.** Be sure to use Loctite® Red on all bolts and tighten to the recommended specifications.
3. **It is the owner's responsibility to hook up all towing equipment per manufacturer's instructions/recommendations.**
4. Remove the attachment tabs when not in use (if applicable).

## Notice To Baseplate Installer

### 1. It is YOUR responsibility to watch for:

- Oil cooler and air conditioner lines
- Electrical wires and hoses
- Missing parts or attaching points on the frame

\*\* If the baseplate is improperly installed and is against a wire or hose, it could cause fluid leaks or electrical shorts some time after the actual baseplate installation.

## Permanent Baseplate Safety Cable Installation

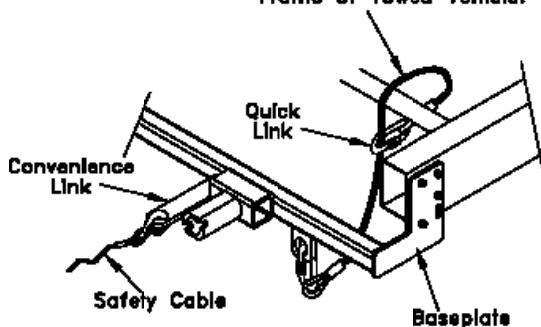
Permanent baseplate safety cables are strongly recommended when towing a vehicle with a tow bar. The principle function of the permanent baseplate safety cables is to prevent the towed vehicle from breaking loose in the event the connection between the frame of the towed vehicle and the baseplate fails or becomes disconnected. The cables must be connected from the baseplate to the frame rail or cross member of the vehicle's frame. The illustrations below show the possible arrangements recommended by Blue Ox®. Each permanent baseplate safety cable must have an adequate weight rating for the towing system. The weight rating of the two (2) cables together will not qualify.

***Do not mount the permanent baseplate safety cables against wires, hoses or brake lines.***

These permanent baseplate safety cables should remain installed as long as the baseplate is installed on the vehicle. Permanent baseplate safety cables are to be used in conjunction with, and NOT a replacement for legally required safety cables attaching the towed vehicle to the towing vehicle.

### OPTION #1

Permanent Baseplate Safety Cables to Cross Member or Frame of Towed Vehicle.



### OPTION #2

Permanent Baseplate Safety Cables to Cross Member or Frame of Towed Vehicle.

