



Strong As An Ox™

BX1953 Installation Instructions 2003 Dodge Neon SE

Serial No.

The front fascia, horn bracket, air baffle and head light assemblies are removed for baseplate installation. Drilling is required. The BX8869 is available for the vehicle. Attachment Tabs are 24 inches center to center and a height of 15 inches.



1. Remove three metric bolts from the top of fascia's grill using the 8MM socket.



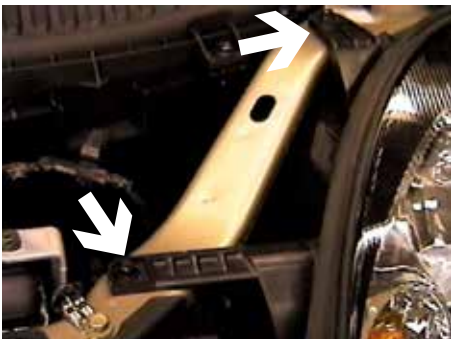
2. Just forward of front tire, on fascia's edge, remove two torx screws with the 25 torx, both sides.



3. Inside wheel well, on fascia's upper corner, are three metric bolts to remove with the 10MM socket, both sides.



4. Remove three metric bolts on the bottom edge of fascia with the 8MM socket. Pull fascia forward and set aside. (Some models may require disconnect of electrical components.)



5. Using the 8MM socket, remove two metric bolts on head light assembly, pull forward, disconnect electrical and set aside, both sides.



6. Remove two metric bolts from air baffle on driver's side using the 10MM socket. Uncouple hose connections and push baffle to the rear of vehicle to disengage retailer hook on frame.



Strong As An Ox™



7. Remove horn bracket's metric bolt on the passenger's side with the 10MM socket and set aside.



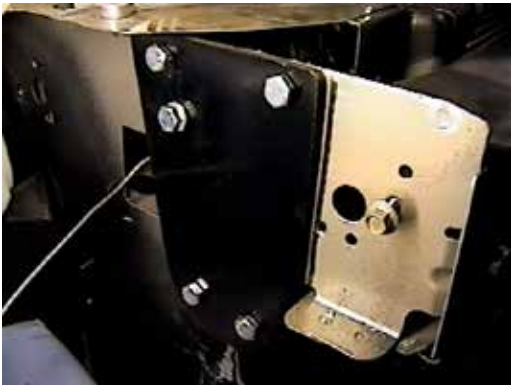
8. Remove three metric bolts from windshield washer reservoir using the 10MM socket, unplug electrical connections, unplug hoses and set aside.



9. Mark 3" down from top of webbing and 1 1/4" in to frame edge. Then cut webbing with hack saw to open area for baseplate.



10. Align item 1 with top edge of frame, as far forward as possible and clamp with vise grip, see photo in step 11. Slide fascia in place and adjust baseplate accordingly for proper fit.



11. Using the baseplate as a template, drill all holes with the 13/32" drill bit, both sides. Insert item 2 into frame opening to align with middle drilled hole and tighten items 4 and 5. **Be sure and use loctite on all bolts before tightening. Tighten all bolts according to torque specification chart in General Instructions.**



12. Install items 3, 4 and 5 according to drawing on last page and tighten all bolts. **Be sure and use loctite on all bolts before tightening. Tighten all bolts according to torque specification chart in General Instructions.**



Strong As An Ox™



13. Install items 4, 5 and 6 according to drawing on last page and tighten all bolts. Be sure and use loctite on all bolts before tightening. Tighten all bolts according to torque specification chart in General Instructions.



14. Using the hack saw, cut off hook clip on the frame side of air baffle. Reinstall air baffle, horn bracket, reservoir and head light assemblies. Be sure all electrical connections and hoses are plugged in properly.

15. Reinstall fascia. No trimming of fascia is required.

16. The dimensional variations between otherwise identical cars can be considerable. While the location and size of the holes in the baseplate were designed to allow for easy installation, it may be necessary to file a hole slightly to allow a bolt to clear.

17. Install the tow bar and safety cables according to the instructions included in their packages.

18. Do not substitute other devices if the tow bar pin and clip are lost.

19. DEALER OR INSTALLER: BE CERTAIN THE USER RECEIVES THE INSTRUCTION SHEET.



Location of the BX8869 in the driver's side tail light.



Tools Required

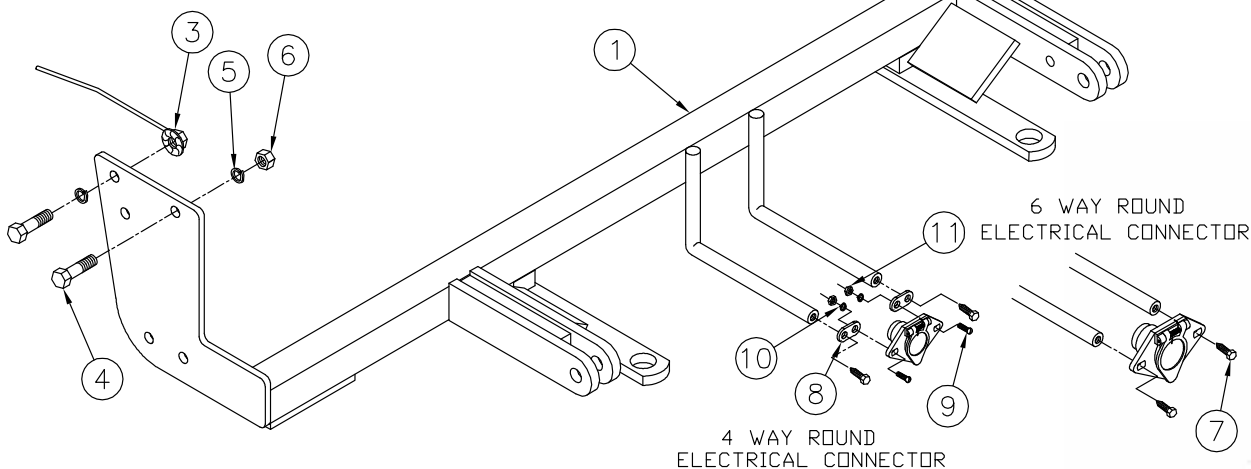
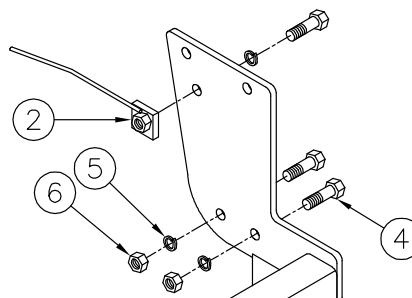
9/16" Wrench
9/16" Socket
Hack Saw

Loctite
Vise Grip
Phillips Screw Driver

8MM Socket
10MM Socket
13/32" Drill Bit

Parts List

Ref. No.	Qty.	Part No.	Description
1	1	61-5846	Weldment, Base Plate, BX1953
2	2	61-5208	3/8-16 Nut Plate
3	2	202-0071	3/8-16 Hex Flange Whiz Lock Nut, ZP
4	10	201-0368	3/8-16 x 1 1/4 Bolt, Grd. 5, ZP
5	10	203-0010	3/8 Lock Washer, ZP
6	6	202-0003	3/8-16 Hex Nut, ZP
7	2	201-0979	#12-14 x 1" Self Drilling Screw, ZP
8	2	101-5822	Adapter, 4 Way Connector
9	2	201-0192	#10-32 x 1/2 Slot, Rd. Hd. Screw
10	2	203-0054	#10 Lock Washer
11	2	202-0047	#10-32 Hex Nut



IMPORTANT: Use only genuine factory replacement parts on your Base Plate. Do not substitute homemade or nontypical parts. If a bolt is lost or in need of replacement, for your safety and the preservation of your Base Plate, be sure to use a replacement bolt of the same grade (Usually Grade 5, refer to parts list). Repair parts may be ordered through your nearest **Blue Ox** dealer or distributor.

General Information

1. Ensure that your product(s) are registered online at www.blueox.com. It is crucial to register your product(s) so that you may be alerted of product offerings, updates, upgrades, maintenance and safety bulletins, and/or recalls.
2. **It is the owner's responsibility to inspect all towing equipment for cracked welds, missing or worn parts and loose bolts before each towing trip.** Be sure to use Loctite® Red on all bolts and tighten to the recommended specifications.
3. **It is the owner's responsibility to hook up all towing equipment per manufacturer's instructions/recommendations.**
4. Remove the attachment tabs when not in use (if applicable).

Notice To Baseplate Installer

1. It is YOUR responsibility to watch for:

- Oil cooler and air conditioner lines
- Electrical wires and hoses
- Missing parts or attaching points on the frame

** If the baseplate is improperly installed and is against a wire or hose, it could cause fluid leaks or electrical shorts some time after the actual baseplate installation.

Permanent Baseplate Safety Cable Installation

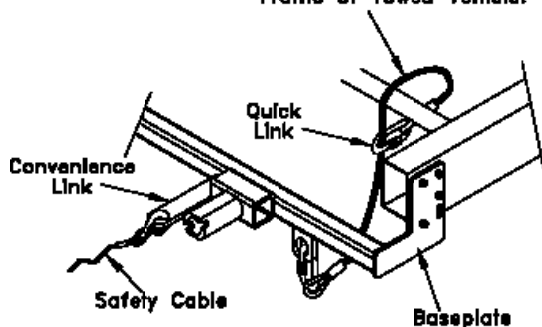
Permanent baseplate safety cables are strongly recommended when towing a vehicle with a tow bar. The principle function of the permanent baseplate safety cables is to prevent the towed vehicle from breaking loose in the event the connection between the frame of the towed vehicle and the baseplate fails or becomes disconnected. The cables must be connected from the baseplate to the frame rail or cross member of the vehicle's frame. The illustrations below show the possible arrangements recommended by Blue Ox®. Each permanent baseplate safety cable must have an adequate weight rating for the towing system. The weight rating of the two (2) cables together will not qualify.

Do not mount the permanent baseplate safety cables against wires, hoses or brake lines.

These permanent baseplate safety cables should remain installed as long as the baseplate is installed on the vehicle. Permanent baseplate safety cables are to be used in conjunction with, and NOT a replacement for legally required safety cables attaching the towed vehicle to the towing vehicle.

OPTION #1

Permanent Baseplate Safety Cables to Cross Member or Frame of Towed Vehicle.



OPTION #2

Permanent Baseplate Safety Cables to Cross Member or Frame of Towed Vehicle.

