



Strong As An Ox™

## BX1652 Installation Instructions 2003 Cadillac DeVille

Serial No.

The front fascia, windshield washer reservoir and head light assemblies are removed for baseplate installation. Drilling is required. The BX8811 is available for the vehicle. Attachment Tabs are 24 inches center to center and a height of 13 inches.



1. Remove the four push pins from the top side of fascia, just under hood latch.



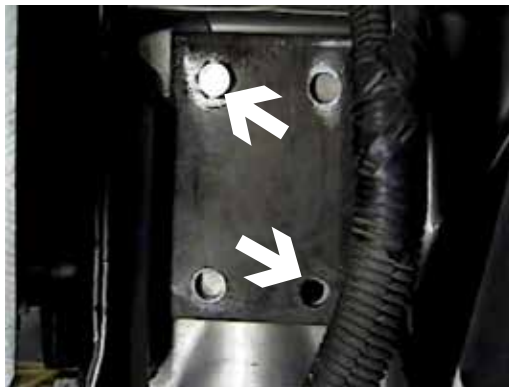
2. Just forward of front tires, on wheel well edge, are three push pins to remove, both sides.



3. Using the 10MM socket, remove one metric bolt inside wheel well on upper fascia corner, both sides.



4. Remove seven push pins from the bottom of front fascia, unplug side lights. Pull fascia forward and set aside.



5. Hold item 2, 1/4" down from top webbing, flush with the back bumper bolt bracket (approximately 3/4" back of front webbing), drill top front and lower back holes with the 13/32" drill bit, both sides.



6. Hold items 1 and 2 to align with drilled holes. Insert item 3 into opening on frame, tighten items 4 and 5. **Be sure and use loctite on all bolts before tightening. Tighten according to torque chart in the General Instruction Sheet.**



Strong As An Ox™



7. Drill remaining holes with the 13/32" drill bit. Install items 3, 4 and 5, tighten all bolts, both sides. **Be sure and use loctite on all bolts before tightening. Tighten according to torque chart in the General Instruction Sheet.**



8. Hold fascia in place, mark and trim accordingly using the utility knife. Reinstall fascia and be sure all electrical connections are plugged in properly.

9. The dimensional variations between otherwise identical cars can be considerable. While the location and size of the holes in the baseplate were designed to allow for easy installation, it may be necessary to file a hole slightly to allow a bolt to clear.

10. Install the tow bar and safety cables according to the instructions included in their packages.

11. Do **not** substitute other devices if the tow bar pin and clip are lost.

12. **DEALER OR INSTALLER: BE CERTAIN THE USER RECEIVES THE INSTRUCTION SHEET.**





Strong As An Ox™

## Tools Required

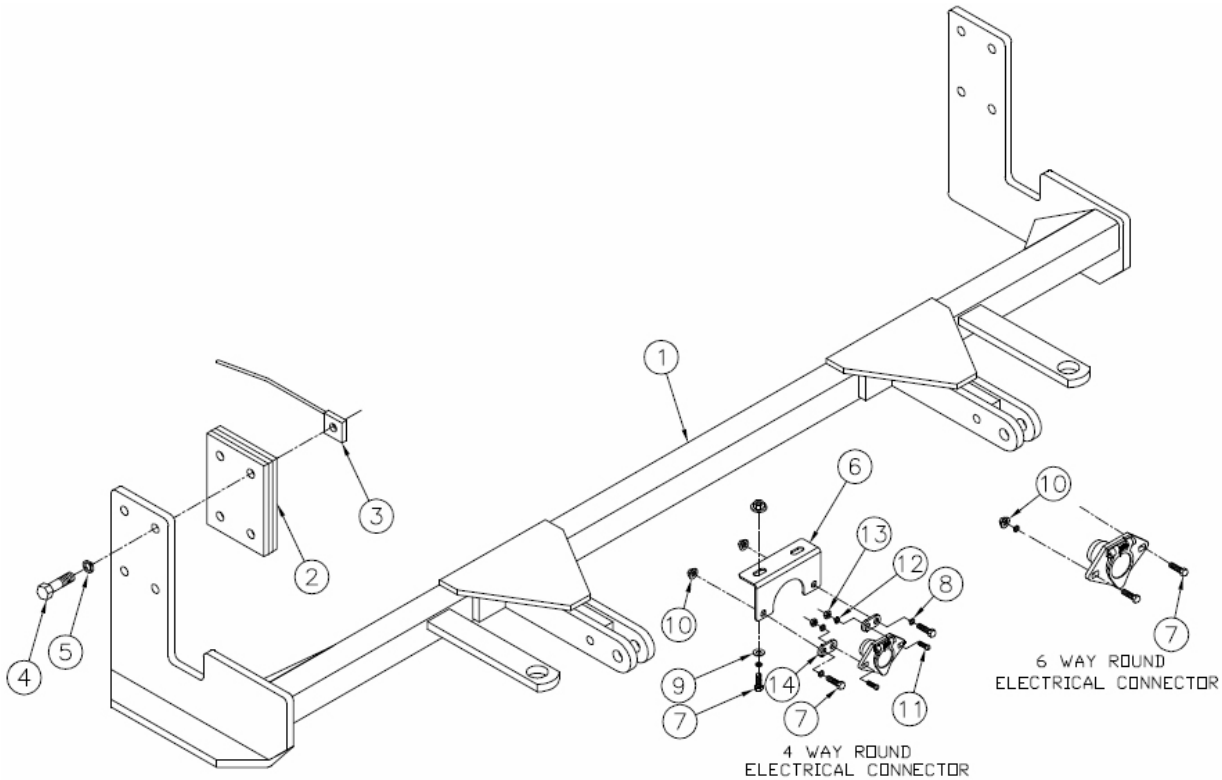
9/16" Socket  
13/32" Drill Bit

Loctite  
Tape Measure

10MM Socket

## Parts List

Ref. No.	Qty.	Part No.	Description
1	1	61-5938	Weldment, Base Plate, BX1652
2	2	61-5950	Weldment, Spacer Plate, BX1652
3	8	61-5208	3/8-16 Nut Plate
4	8	201-0332	3/8-16 x 2 1/4 Bolt Grd. 5, ZP
5	8	203-0010	3/8 Lock Washer, ZP
6	1	101-6135	Electrical Bracket
7	4	201-0569	1/4-20 x 3/4, Hex Bolt, Grd 5, ZP
8	4	203-0008	1/4 Lock Washer, ZP
9	2	203-0001	1/4 Lock Washer, ZP
10	4	202-0069	1/4-20 Hex, Flange, Whiz Lock Nut, ZP
11	2	201-0192	#10-32 x 1/2 Slot, Rd. Hd. Screw
12	2	203-0054	#10 Lock Washer
13	2	202-0047	#10-32 Hex Nut
14	2	101-5822	Adapter, 4 Way Connector



**IMPORTANT:** Use only genuine factory replacement parts on your Base Plate. Do not substitute homemade or nontypical parts. If a bolt is lost or in need of replacement, for your safety and the preservation of your Base Plate, be sure to use a replacement bolt of the same grade (Usually Grade 5, refer to parts list). Repair parts may be ordered through your nearest **Blue Ox** dealer or distributor.

# General Information

1. Ensure that your product(s) are registered online at [www.blueox.com](http://www.blueox.com). It is crucial to register your product(s) so that you may be alerted of product offerings, updates, upgrades, maintenance and safety bulletins, and/or recalls.
2. **It is the owner's responsibility to inspect all towing equipment for cracked welds, missing or worn parts and loose bolts before each towing trip.** Be sure to use Loctite® Red on all bolts and tighten to the recommended specifications.
3. **It is the owner's responsibility to hook up all towing equipment per manufacturer's instructions/recommendations.**
4. Remove the attachment tabs when not in use (if applicable).

## Notice To Baseplate Installer

### 1. It is YOUR responsibility to watch for:

- Oil cooler and air conditioner lines
- Electrical wires and hoses
- Missing parts or attaching points on the frame

\*\* If the baseplate is improperly installed and is against a wire or hose, it could cause fluid leaks or electrical shorts some time after the actual baseplate installation.

## Permanent Baseplate Safety Cable Installation

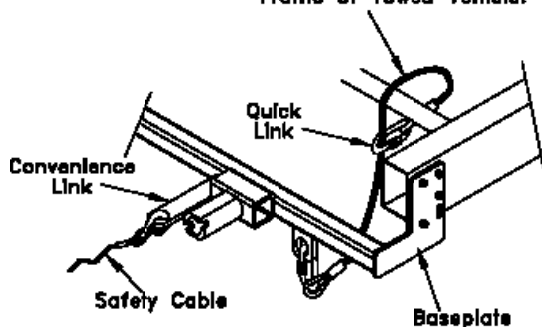
Permanent baseplate safety cables are strongly recommended when towing a vehicle with a tow bar. The principle function of the permanent baseplate safety cables is to prevent the towed vehicle from breaking loose in the event the connection between the frame of the towed vehicle and the baseplate fails or becomes disconnected. The cables must be connected from the baseplate to the frame rail or cross member of the vehicle's frame. The illustrations below show the possible arrangements recommended by Blue Ox®. Each permanent baseplate safety cable must have an adequate weight rating for the towing system. The weight rating of the two (2) cables together will not qualify.

***Do not mount the permanent baseplate safety cables against wires, hoses or brake lines.***

These permanent baseplate safety cables should remain installed as long as the baseplate is installed on the vehicle. Permanent baseplate safety cables are to be used in conjunction with, and NOT a replacement for legally required safety cables attaching the towed vehicle to the towing vehicle.

### OPTION #1

Permanent Baseplate Safety Cables to Cross Member or Frame of Towed Vehicle.



### OPTION #2

Permanent Baseplate Safety Cables to Cross Member or Frame of Towed Vehicle.

