



Strong As An Ox™

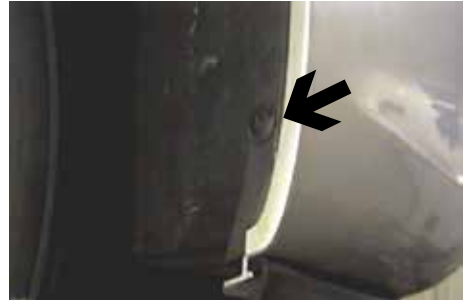
## BX1646 Installation Instructions 2003 - 07 Cadillac CTS

Serial No.

The front fascia, metal bumper, bumper brackets and horn bracket are removed for baseplate installation. Holes need to be drilled. Forward windshield washer brace is removed to relieve area for baseplate. No trimming required. The BX8869 is available for this vehicle. Attachment Tabs are 18 inches center to center and a height of 12 1/2 inches.



1. Remove eight push pins from the top side of fascia.



2. Just forward of front tire, on fascia corner, remove three push pins, both sides.



3. Inside wheel well, on fascia's corner, remove three metric bolts with the 10MM deep socket, both sides.



4. Using the 7MM socket, remove the two metric bolts and eight push pins on lower fascia. Pull fascia forward and set aside.



5. Remove six metric bolts from metal bumper using the 13MM socket, pull forward and set aside. Remove metric bolt on windshield washer reservoir from bumper bracket with a 10MM socket.



6. Using the 13MM socket remove the four metric bolts from metal bumper bracket, pull forward and set aside, both sides. Remove horn and bracket on driver's side with 10MM socket.



Strong As An Ox™



7. Hold baseplate to align with existing 1/2" hole on driver's side, outer frame, and insert item 3 into existing hole from frame end. Install items 6 and 8, do not tighten. With baseplate aligned to existing hole on passenger's side inner frame, install items 3, 6 and 8, do not tighten. **Be sure and use loctite on all bolts before tightening.**



8. While maintaining a level position on the attachment tabs, clamp the baseplate to frame with vise grips. Using the baseplate as a template, drill the remaining four holes with the 13/32" drill bit. Insert item 4 into frame end and install items 5 and 7, tighten all bolts. **Be sure and use loctite on all bolts before tightening.**



9. Using the hack saw, cut off the brace for the windshield washer reservoir on the passenger's side bumper bracket, reinstall bumper brackets, metal bumper, horn brace and fascia. Be sure all electrical connections are secured.
10. The dimensional variations between otherwise identical cars can be considerable. While the location and size of the holes in the baseplate were designed to allow for easy installation, it may be necessary to file a hole slightly to allow a bolt to clear.
11. Install the tow bar and safety cables according to the instructions included in their packages.
12. Do **not** substitute other devices if the tow bar pin and clip are lost.
13. **DEALER OR INSTALLER: BE CERTAIN THE USER RECEIVES THE INSTRUCTION SHEET.**



Strong As An Ox™

## Tools Required

Loctite Blue  
9/16" Socket  
Hack Saw

7MM Socket  
3/4" Socket  
Flat Screw Driver

10MM Deep Socket  
13MM Socket  
13/32" Drill Bit

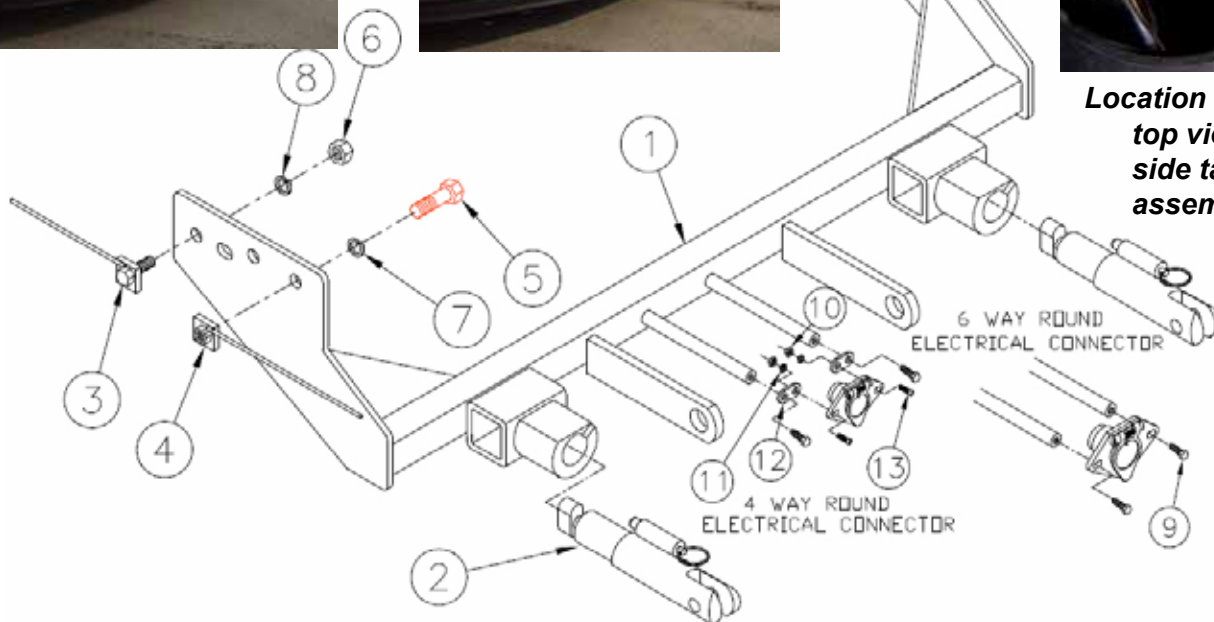
## Parts List

### Description

Ref. No.	Qty.	Part No.	Description
1	1	61-5790	Weldment, Base Plate, BX1646
2	2	62-3468	Assy, Att. Tab, Rem., SF/SB
3	2	61-4593	1/2 X 1 1/4 Bolt Plate w/wire
4	4	61-5208	Wldm't, Nut Plate, 1/4x1x1, 3/8 Bolt
5	4	201-0368	3/8-16 x 1 1/4 Hex Hd. Bolt, Grd.5, ZP
6	2	202-0005	1/2-13 Hex Nut, ZP, Grd.5
7	4	203-0010	3/8 Lock Washer, ZP
8	2	203-0012	1/2 Lock Washer, ZP
9	2	201-0979	#12-14 x 1" Self Drilling Screw, ZP
10	2	202-0047	#10-32 Hex Nut, ZP
11	2	203-0054	#10 Lock Washer, ZP
12	2	101-5822	Adapter, 4 Way Connector
13	2	201-0192	#10-32 x 1/2 Slot Hd. Screw, ZP
	2	226-0046	Baseplate Safety Cable, 36" CL III (Not Shown)
	2	229-0359	Quicklink, 3/8, ZP (Not Shown)
	2	290-0437	Receiver, Cap Plug (BLK) (Not Shown)



**Location for the BX8869, top view of driver's side tail light assembly.**



**IMPORTANT:** Use only genuine factory replacement parts on your Base Plate. Do not substitute homemade or nontypical parts. If a bolt is lost or in need of replacement, for your safety and the preservation of your Base Plate, be sure to use a replacement bolt of the same grade (Usually Grade 5, refer to parts list). Repair parts may be ordered through your nearest **Blue Ox** dealer or distributor.

# General Information

1. Ensure that your product(s) are registered online at [www.blueox.com](http://www.blueox.com). It is crucial to register your product(s) so that you may be alerted of product offerings, updates, upgrades, maintenance and safety bulletins, and/or recalls.
2. **It is the owner's responsibility to inspect all towing equipment for cracked welds, missing or worn parts and loose bolts before each towing trip.** Be sure to use Loctite® Red on all bolts and tighten to the recommended specifications.
3. **It is the owner's responsibility to hook up all towing equipment per manufacturer's instructions/recommendations.**
4. Remove the attachment tabs when not in use (if applicable).

## Notice To Baseplate Installer

### 1. It is YOUR responsibility to watch for:

- Oil cooler and air conditioner lines
- Electrical wires and hoses
- Missing parts or attaching points on the frame

\*\* If the baseplate is improperly installed and is against a wire or hose, it could cause fluid leaks or electrical shorts some time after the actual baseplate installation.

## Permanent Baseplate Safety Cable Installation

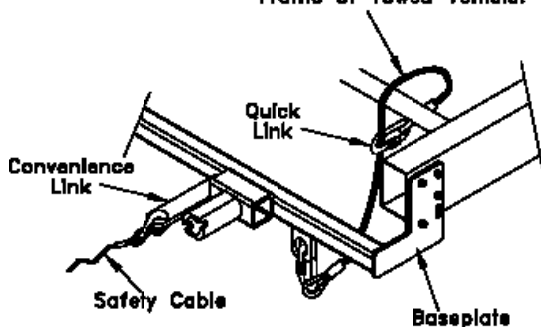
Permanent baseplate safety cables are strongly recommended when towing a vehicle with a tow bar. The principle function of the permanent baseplate safety cables is to prevent the towed vehicle from breaking loose in the event the connection between the frame of the towed vehicle and the baseplate fails or becomes disconnected. The cables must be connected from the baseplate to the frame rail or cross member of the vehicle's frame. The illustrations below show the possible arrangements recommended by Blue Ox®. Each permanent baseplate safety cable must have an adequate weight rating for the towing system. The weight rating of the two (2) cables together will not qualify.

***Do not mount the permanent baseplate safety cables against wires, hoses or brake lines.***

These permanent baseplate safety cables should remain installed as long as the baseplate is installed on the vehicle. Permanent baseplate safety cables are to be used in conjunction with, and NOT a replacement for legally required safety cables attaching the towed vehicle to the towing vehicle.

### OPTION #1

Permanent Baseplate Safety Cables to Cross Member or Frame of Towed Vehicle.



### OPTION #2

Permanent Baseplate Safety Cables to Cross Member or Frame of Towed Vehicle.

