



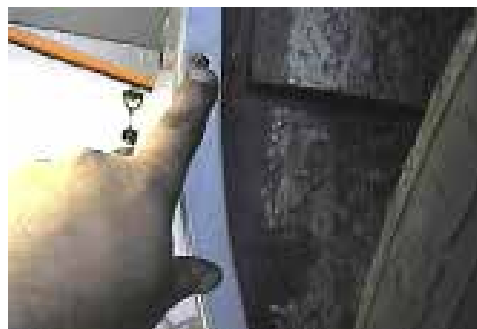
**BX1507 Installation Instructions  
2001-03 Buick Park Avenue**

**Serial No.**

The front fascia and metal bumper is removed for baseplate installation. Holes need to be drilled. The BX8869 is available for the vehicle. The attachment tabs are 24" center to center and at 12 1/4" height.



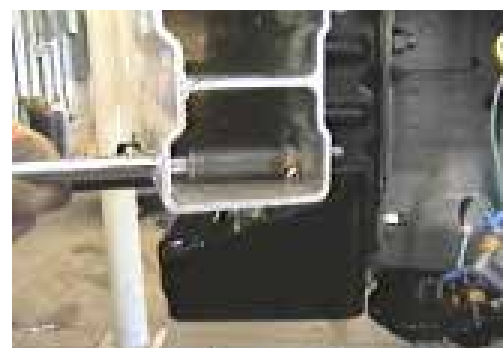
1. *Remove 10 push pins from under front end just behind bumper.*



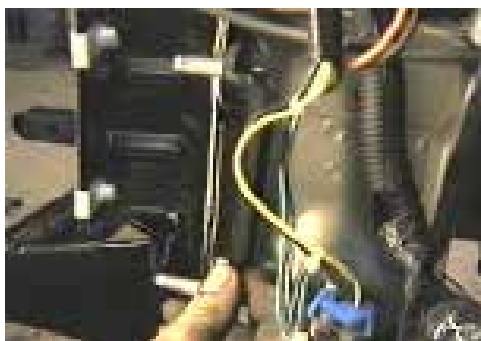
2. *There are two phillips screws just forward of front tires both sides.*



3. *Using the 10MM socket remove the two metric bolts from the inside of wheel well to separate fascia from fender.*



4. *Remove four metric bolts with 13MM socket from metal bumper and set metal bumper aside.*



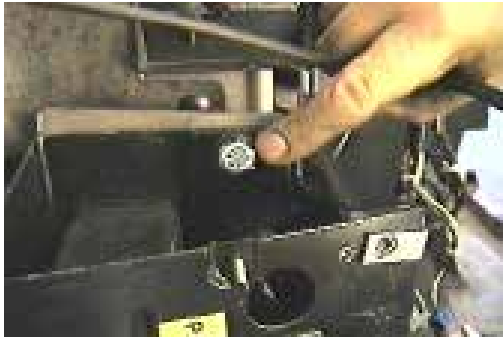
5. *Remove bolt bracket with a 16MM socket and discard bracket.*



6. *Hold baseplate to align with these two existing holes and insert items 2,4, 5, and 6 both sides. **Be sure and use loctite on all bolts before tightening.***



Strong As An Ox™



7. Using the baseplate as a template drill 13/32" hole. Insert items 2, 5, and 6 according to drawing on last page.



8. Drill a 13/32" holes using the lower bracket as a template on both sides. Insert items 3, 5, and 6 according to drawing on last page. **Be sure and use loctite on all bolts before tightening.**

9. Reinstall metal bumper and fascia assuring that all bolt are tightened according to manufactor specifications.

10. The dimensional variations between otherwise identical cars can be considerable. While the location and size of the holes in the baseplate were designed to allow for easy installation, it may be necessary to file a hole slightly to allow a bolt to clear.

11. Install the tow bar and safety cables according to the instructions included in their packages.

12. Do **not** substitute other devices if the tow bar pin and clip are lost.

13. **DEALER OR INSTALLER: BE CERTAIN THE USER RECEIVES THE INSTRUCTION SHEET.**

## Tools Required

10MM Socket  
13MM Socket

16MM Socket

Loctite Blue  
9/16" Socket

Phillips Screw Driver

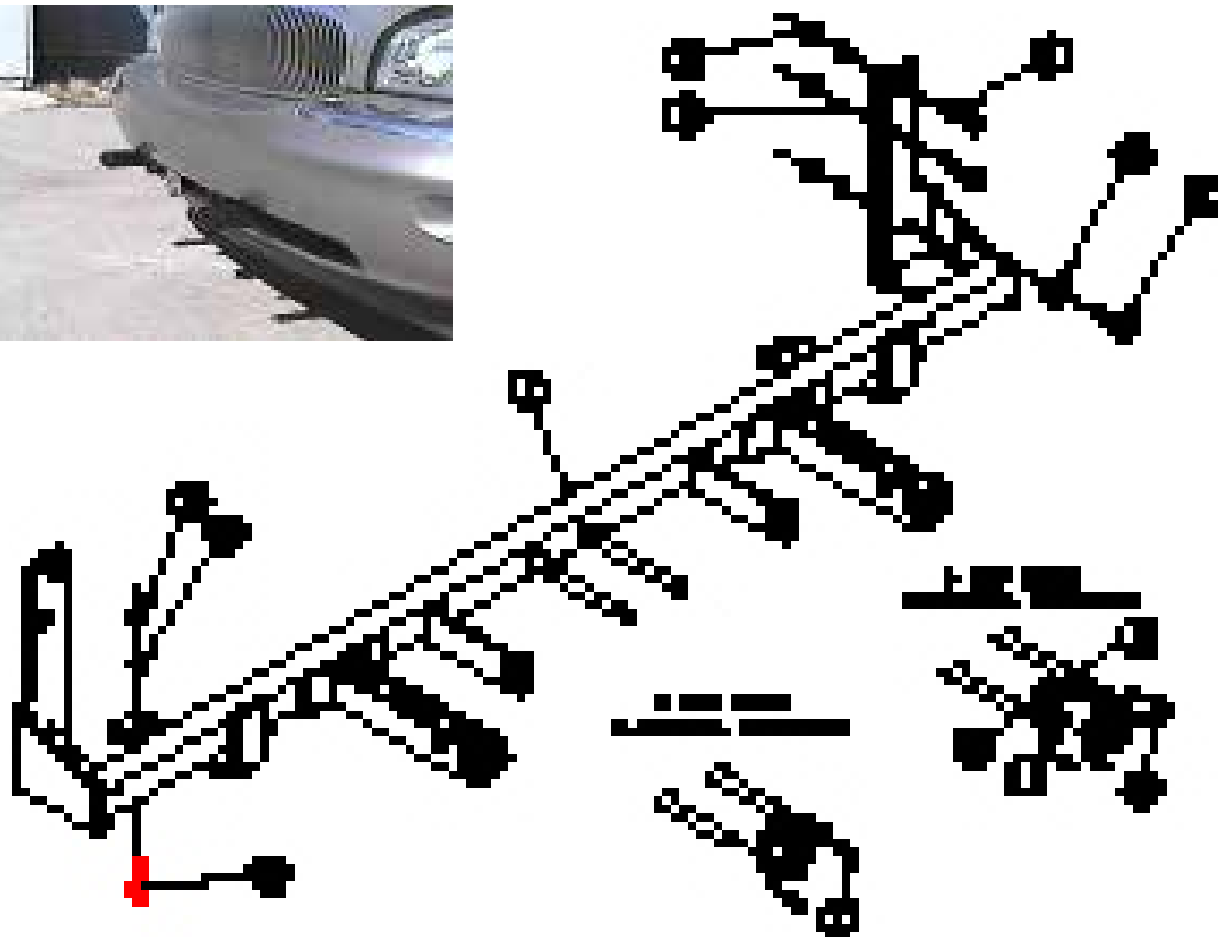
13/32" Drill Bit  
Vise Grips



Strong As An Ox™

### Parts List

Ref. No.	Qty.	Part No.	Description
1	1	61-5660	Weldment, Base Plate, BX1507
2	6	201-0440	3/8-16 x 1 1/2 Hex Bolt, Grd. 5, ZP
3	2	201-0368	3/8-16 x 1 1/4 Hex Bolt, Grd. 5, ZP
4	2	203-0003	3/8 Flat Washer, ZP
5	6	203-0010	3/8 Lock Washer, ZP
6	8	202-0003	3/8-16 Hex Nut, ZP
7	2	201-0979	#12-14 x 1" Self Drilling Screw, ZP
8	2	202-0047	#10-32 Hex Nut
9	2	203-0054	#10 Lock Washer
10	2	201-0192	#10-32 x 1/2 Slot, Rd. Hd. Screw
11	2	101-5822	Adapter, 4 Way Connector



**IMPORTANT:** Use only genuine factory replacement parts on your Base Plate. Do not substitute homemade or nontypical parts. If a bolt is lost or in need of replacement, for your safety and the preservation of your Base Plate, be sure to use a replacement bolt of the same grade (Usually Grade 5, refer to parts list). Repair parts may be ordered through your nearest **Blue Ox** dealer or distributor.

# General Information

1. Ensure that your product(s) are registered online at [www.blueox.com](http://www.blueox.com). It is crucial to register your product(s) so that you may be alerted of product offerings, updates, upgrades, maintenance and safety bulletins, and/or recalls.
2. **It is the owner's responsibility to inspect all towing equipment for cracked welds, missing or worn parts and loose bolts before each towing trip.** Be sure to use Loctite® Red on all bolts and tighten to the recommended specifications.
3. **It is the owner's responsibility to hook up all towing equipment per manufacturer's instructions/recommendations.**
4. Remove the attachment tabs when not in use (if applicable).

## Notice To Baseplate Installer

### 1. It is YOUR responsibility to watch for:

- Oil cooler and air conditioner lines
- Electrical wires and hoses
- Missing parts or attaching points on the frame

\*\* If the baseplate is improperly installed and is against a wire or hose, it could cause fluid leaks or electrical shorts some time after the actual baseplate installation.

## Permanent Baseplate Safety Cable Installation

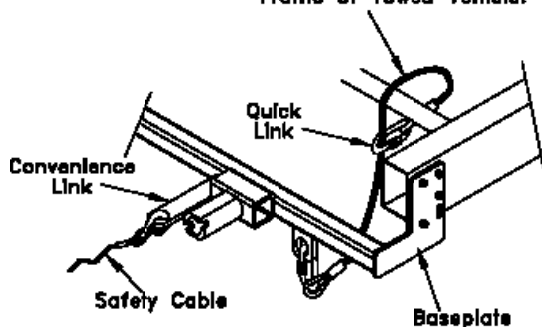
Permanent baseplate safety cables are strongly recommended when towing a vehicle with a tow bar. The principle function of the permanent baseplate safety cables is to prevent the towed vehicle from breaking loose in the event the connection between the frame of the towed vehicle and the baseplate fails or becomes disconnected. The cables must be connected from the baseplate to the frame rail or cross member of the vehicle's frame. The illustrations below show the possible arrangements recommended by Blue Ox®. Each permanent baseplate safety cable must have an adequate weight rating for the towing system. The weight rating of the two (2) cables together will not qualify.

***Do not mount the permanent baseplate safety cables against wires, hoses or brake lines.***

These permanent baseplate safety cables should remain installed as long as the baseplate is installed on the vehicle. Permanent baseplate safety cables are to be used in conjunction with, and NOT a replacement for legally required safety cables attaching the towed vehicle to the towing vehicle.

### OPTION #1

Permanent Baseplate Safety Cables to Cross Member or Frame of Towed Vehicle.



### OPTION #2

Permanent Baseplate Safety Cables to Cross Member or Frame of Towed Vehicle.

