

BX1007

2001-03 Acura CL

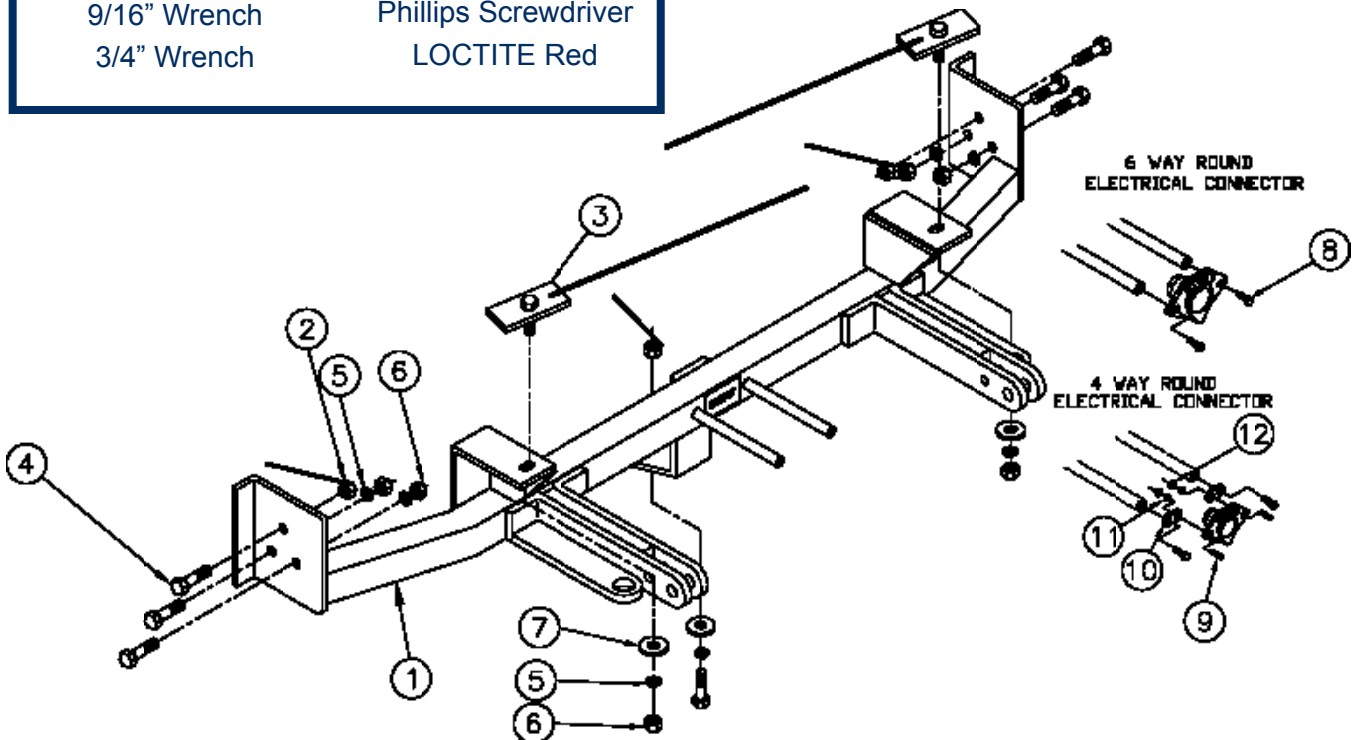
Installation Instructions

Parts List

Ref. No.	Qty.	Part #	Description
1	1	61-5522	Weldment, Baseplate, BX1007
2	3	61-4978	3/8" Whiz Nut, w/ 14" Wire
3	2	61-5331	Weldment, Bolt Plate, 3/8-16 x 1 1/4"
4	7	201-0368	3/8-16 x 1 1/4" Hex Bolt, Grd. 5, ZP
5	7	203-0010	3/8" Lock Washer, ZP
6	6	202-0003	3/8-16 Hex Nut, ZP
7	3	203-0003	3/8" Flat Washer, ZP
8	2	201-0979	#12-14 x 1" Self Drilling Screw, ZP
9	2	201-0192	#10-32 x 1/2" Slot RD. HD. Screw
10	2	101-5822	Adapter, 4 Way Connector
11	2	203-0054	#10 Lock Washer
12	2	202-0047	#10 Hex Nut

Tools Required

12MM Wrench	C Clamp
14MM Wrench	Utility Knife
9/16" Wrench	Phillips Screwdriver
3/4" Wrench	LOCTITE Red



Important:

Use only genuine factory replacement parts on your baseplate. Do NOT substitute homemade or non-typical parts. If a bolt is lost or in need of replacement, for your safety and the preservation of your baseplate, be sure to use a replacement bolt of the same grade (In most cases it will be Grade 5, please reference the parts list above). Replacement parts may be ordered through your nearest Blue Ox® Dealer or Distributor, or call our 24/7 Customer Care Team at (402)385-3051.

BX1007
2001-03 Acura CL
Installation Instructions

Standard Tab Spacing Guidelines:

Due to the design of the removable tabs, the RangeFinderII tow bar can not be used. Adapters, except the BX8833 and BX88151, can not be used with this baseplate.

Instructions:

The front fascia is removed and replaced for baseplate installation. Drilling is required.

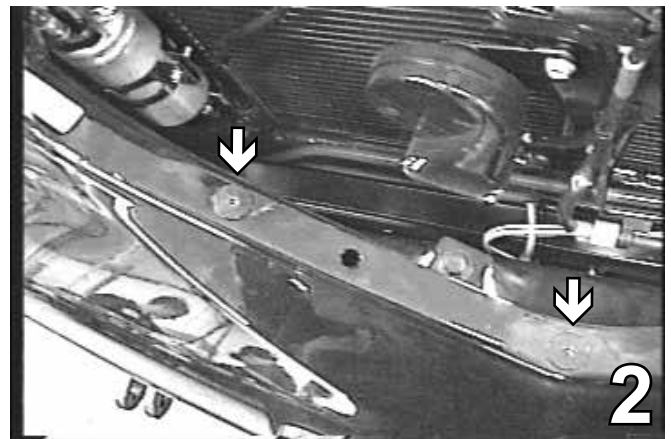
The dimensional variations between otherwise identical vehicles can be considerable. While the baseplate was designed for easy installation, it may be necessary to tailor the baseplate slightly to compensate for auto manufacturer's tolerances. These minor adjustments may include filing a hole slightly, bending electrical rods, and/ or bending end plates.

The BX8869 Bulb and Socket Wiring Kit is recommended for this vehicle.

Installation Instructions



1. Open hood and remove pushpins from the top of the grille and set aside to be reinstalled later.



2. Remove the Phillips screws from the top of the plastic fascia. Set screws aside to be reinstalled later.

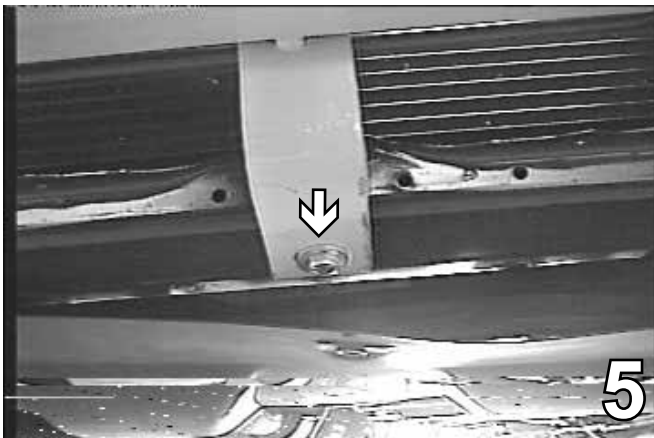
BX1007
2001-03 Acura CL
Installation Instructions



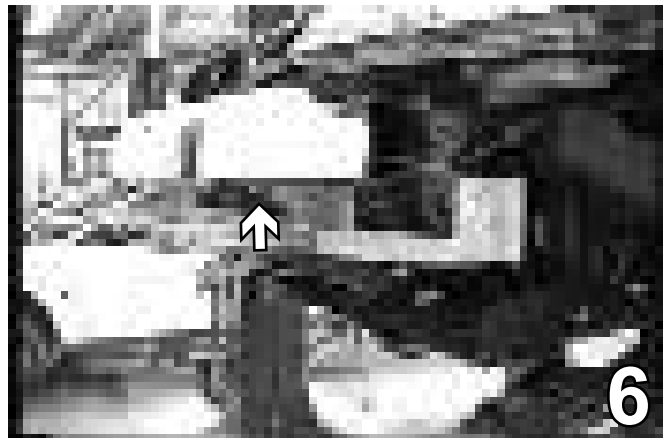
3. Remove the bolt from the wheel well molding forward of the front tires and the pushpins and bolts from the bottom of the fascia. Remove the fascia from the vehicle. Do this to both sides of the vehicle.



4. Hold the baseplate up so it straddles the frame and the front braces lay flush to the bottom of the metal bumper and the center brace lines up to an existing hole in the lower cross member.



5. Use the 3/8" -16 x 1 1/4" hex bolts and 3/8" whiz nut with 14" wire for the lower brace, tighten the nut and the bolt. **Use LOCTITE red with each bolt throughout the installation.**

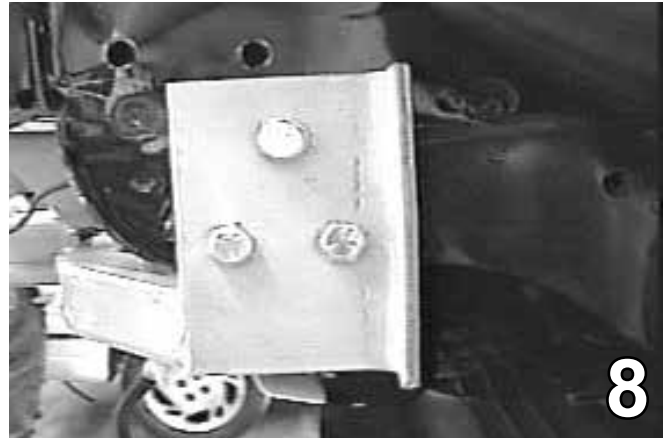


6. Clamp the baseplate so the two braces are flush with the bottom of the metal bumper. Drill 3/8" holes and use the 3/8"-16 x 1 1/4" hex bolt, 3/8" lock washer, 3/8-16 hex nut, and the 3/8" flat washer.

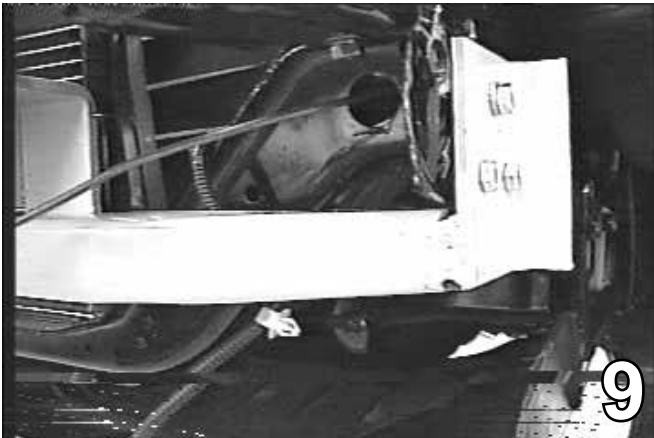
BX1007
2001-03 Acura CL
Installation Instructions



7. Insert the nut plates through the side of the bumper for the front braces.



8. Once the middle braces are bolted to the frame, drill the 3/8" holes for each side. Use the 3/8"-16 x 1 1/4" hex bolt, 3/8" lock washer, and 3/8 flat washer.



9. Insert the wire nut plate through the large hole on the cross frame. Tighten bolts according to the chart on the front page of this document.

10. Replace the electrical connections, bumper and fascia. Baseplate installation is now complete.

Install the tow bar and safety cables according to the instructions included in their packages.

Do not substitute other devices if the tow bar pin and clip are lost.

DEALER OR INSTALLER: BE CERTAIN THE USER RECEIVES THE INSTRUCTION SHEETS.

BX1007
2001-03 Acura CL
Installation Instructions

CUSTOMER SERVICE COMMITMENT

Blue Ox is committed to providing you with exceptional customer care throughout your lifetime with our products. Our team is here to assist you with any questions you may have regarding the performance of your product. Simply call 1-800-228-9289 and you can speak with our customer care team.

Additionally, please visit our website to see which rallies our Destination America team will be attending. For a nominal fee, our service technician will service your towing system to ensure it's in proper working condition. Also as a commitment to our customers, should you visit our factory you can stay at our full service Blue Ox campground at no charge along with enjoying a factory tour.

Again thank you for being our customer and for the confidence you have shown in the performance of our products. It is because of customers like you we enjoy the success we have today.



© 2005 Blue Ox
One Mill Road, Industrial Park
Pender, Nebraska 68047
Phone: (402) 385-3051
Toll Free: (888) 425-5382
Fax: (402) 385-3360
www.blueox.us

General Information

1. Ensure that your product(s) are registered online at www.blueox.com. It is crucial to register your product(s) so that you may be alerted of product offerings, updates, upgrades, maintenance and safety bulletins, and/or recalls.
2. **It is the owner's responsibility to inspect all towing equipment for cracked welds, missing or worn parts and loose bolts before each towing trip.** Be sure to use Loctite® Red on all bolts and tighten to the recommended specifications.
3. **It is the owner's responsibility to hook up all towing equipment per manufacturer's instructions/recommendations.**
4. Remove the attachment tabs when not in use (if applicable).

Notice To Baseplate Installer

1. It is YOUR responsibility to watch for:

- Oil cooler and air conditioner lines
- Electrical wires and hoses
- Missing parts or attaching points on the frame

** If the baseplate is improperly installed and is against a wire or hose, it could cause fluid leaks or electrical shorts some time after the actual baseplate installation.

Permanent Baseplate Safety Cable Installation

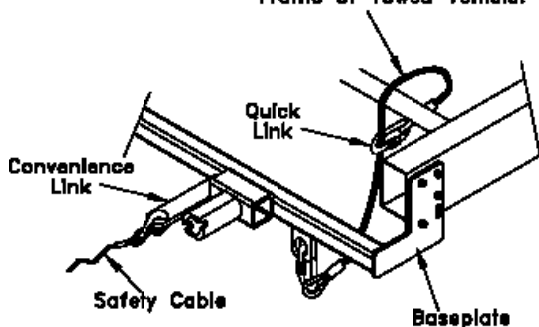
Permanent baseplate safety cables are strongly recommended when towing a vehicle with a tow bar. The principle function of the permanent baseplate safety cables is to prevent the towed vehicle from breaking loose in the event the connection between the frame of the towed vehicle and the baseplate fails or becomes disconnected. The cables must be connected from the baseplate to the frame rail or cross member of the vehicle's frame. The illustrations below show the possible arrangements recommended by Blue Ox®. Each permanent baseplate safety cable must have an adequate weight rating for the towing system. The weight rating of the two (2) cables together will not qualify.

Do not mount the permanent baseplate safety cables against wires, hoses or brake lines.

These permanent baseplate safety cables should remain installed as long as the baseplate is installed on the vehicle. Permanent baseplate safety cables are to be used in conjunction with, and NOT a replacement for legally required safety cables attaching the towed vehicle to the towing vehicle.

OPTION #1

Permanent Baseplate Safety Cables to Cross Member or Frame of Towed Vehicle.



OPTION #2

Permanent Baseplate Safety Cables to Cross Member or Frame of Towed Vehicle.

